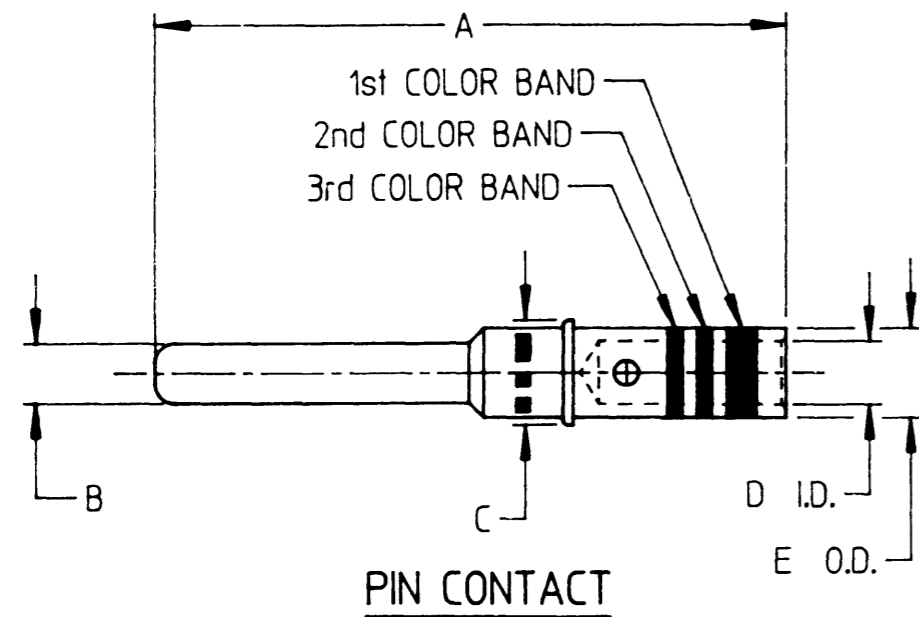
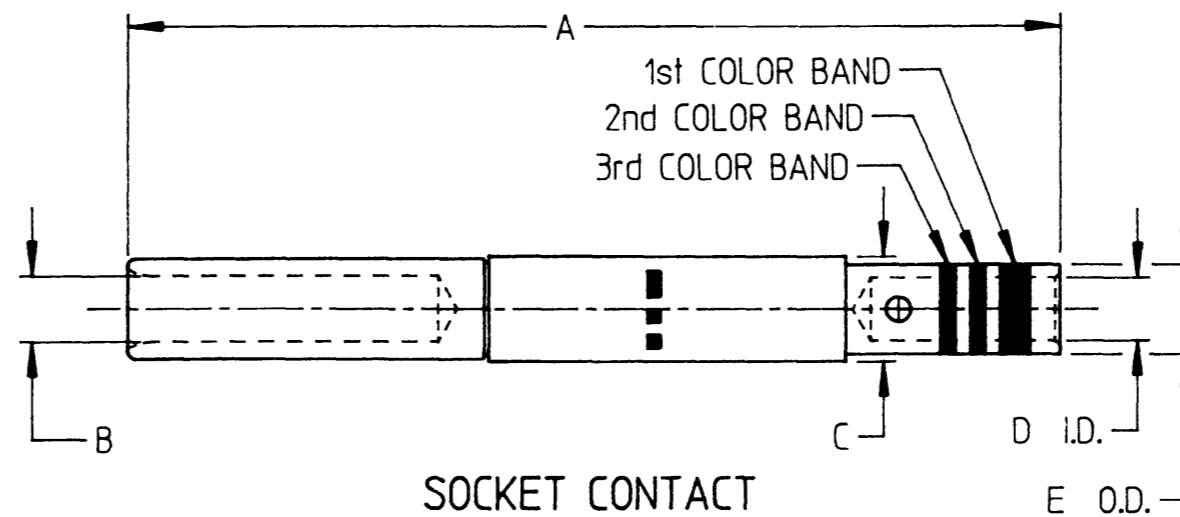


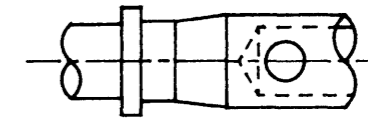
C	12341-** AND 12343-**	REVISIONS			
		REV	DESCRIPTION	DATE	APPROVED
		C	REVISED PER E.O. C1020	10-2-92	P



PIN CONTACT



SOCKET CONTACT



WIRE BARREL CONFIGURATION

12341-23
12343-23
CONTACTS ONLY

DEUTSCH PART NO.	MILITARY PART NO.	COLOR BANDS			SIZE	TYPE	WIRE GAGE RANGE	STRIP LENGTH ±.030	POSITIONER	INS/REM TOOL	WEIGHT	A MAX.	B DIA.	C MAX.	D MIN.	E MAX.
		1st	2nd	3rd												
12341-23	MIL-C-29600/24-610	BLUE	BROWN	BLACK	23	PIN	22 THRU 28	.192	M22520/2-13	M81969/16-04	.00023	.650	.0275/.0260	.058	.033	.050
12343-23	MIL-C-29600/23-606	BLUE	BLACK	BLUE	23	SOCKET	22 THRU 28	.192	M22520/2-16	M81969/16-04	.00057	.955	.031/.029	.058	.033	.050
12341-20	MIL-C-29600/24-611	BLUE	BROWN	BROWN	20	PIN	20 THRU 24	.232	M22520/2-14	M81969/16-01	.00034	.650	.041/.039	.079	.042	.063
12343-20	MIL-C-29600/23-607	BLUE	BLACK	VIOLET	20	SOCKET	20 THRU 24	.232	M22520/2-17	M81969/16-01	.00102	.955	.044/.042	.079	.042	.063
12341-16	MIL-C-29600/24-612	BLUE	BROWN	RED	16	PIN	16 THRU 20	.232	M22520/2-15	M81969/16-02	.00090	.650	.063/.061	.111	.062	.094
12343-16	MIL-C-29600/23-608	BLUE	BLACK	GREY	16	SOCKET	16 THRU 20	.232	M22520/2-18	M81969/16-02	.00190	.955	.068/.065	.111	.062	.094
12341-12	—	NONE	YELLOW	YELLOW	12	PIN	12 AND 14	.266	M22520/1-09	M81969/16-03	.00231	.680	.095/.093	.172	.097	.153
12343-12	—	NONE	YELLOW	YELLOW	12	SOCKET	12 AND 14	.266	M22520/1-10	M81969/16-03	.00517	.970	.100/.097	.172	.097	.153

5. FOR TERMINATION OF SIZE 23 THRU 16 CONTACTS, USE M22520/2-01 CRIMP TOOL WITH APPROPRIATE POSITIONER PER TAB BLOCK. FOR SIZE 12 CONTACTS, USE M22520/1-01 CRIMP TOOL WITH APPROPRIATE POSITIONER.

4. ** IN PART NUMBER INDICATES CONTACT SIZE.

3. MATERIAL: SOCKET BODY - COPPER ALLOY PER MIL-C-39029, COMPOSITION A. SOCKET HOOD - STAINLESS STEEL

2. FINISH: DEUTSCH ALLOY OVER NICKEL PER QQ-N-290.

1. DIMENSIONS ARE IN INCHES UNLESS OTHERWISE SPECIFIED.

NOTE:

SIGNATURE & DATE	
DR	R. GROSS 3-25-92
CHK	J. POWELL 4-15-92
PE	R. Gross 3-25-92
APPD	
SCALE	NONE
WT	—

CONTACT, PIN AND SOCKET

CRIMP TYPE

SIZE 23 THRU 12 FOR DG123
81511 INSERT TYPE CONNECTOR

ENVELOPE

CP	—	MATL CODE	—
DEUTSCH ENGINEERED CONNECTING DEVICES Municipal Airport Banning, California			
B DWG SIZE	12341-** AND 12343-**		
	CODE 11139	SHEET 1 OF 1	

C:\ANEX-14E2L

X-ON Electronics

Largest Supplier of Electrical and Electronic Components

Click to view similar products for [Automotive Connectors](#) category:

Click to view products by [TE Connectivity](#) manufacturer:

Other Similar products are found below :

[003-018-000](#) [600858](#) [60403001](#) [60993906-B](#) [60993913-B](#) [629515004020001](#) [M83723/71R1808N L/C](#) [M902-2131](#) [M902-2161](#) [M902-2344](#)
[72.330.1035.1](#) [73.353.4028.0](#) [F118010](#) [F119300-B](#) [F132210](#) [F166900](#) [F180100](#) [F258300](#) [F258300-B](#) [F294300-B](#) [F339100](#) [F339700](#)
[F358300-B](#) [F374110](#) [F407400](#) [F412210](#) [F444110](#) [F487000](#) [F495100](#) [F500900-B](#) [F509500B-B](#) [770444-1](#) [827153-1](#) [881735-1](#)
[8N1515-32-24P](#) [9-1326729-8](#) [925467-1](#) [925474-1](#) [928905-1](#) [936398-2](#) [964562-4](#) [964731-2](#) [968782-1](#) [GT17SA-8DS-HU](#) [GT17VS-10DP-](#)
[5.2CF](#) [98315-0001](#) [98315-0010](#) [98891-1012](#) [98895-2014](#) [98936-1039](#)