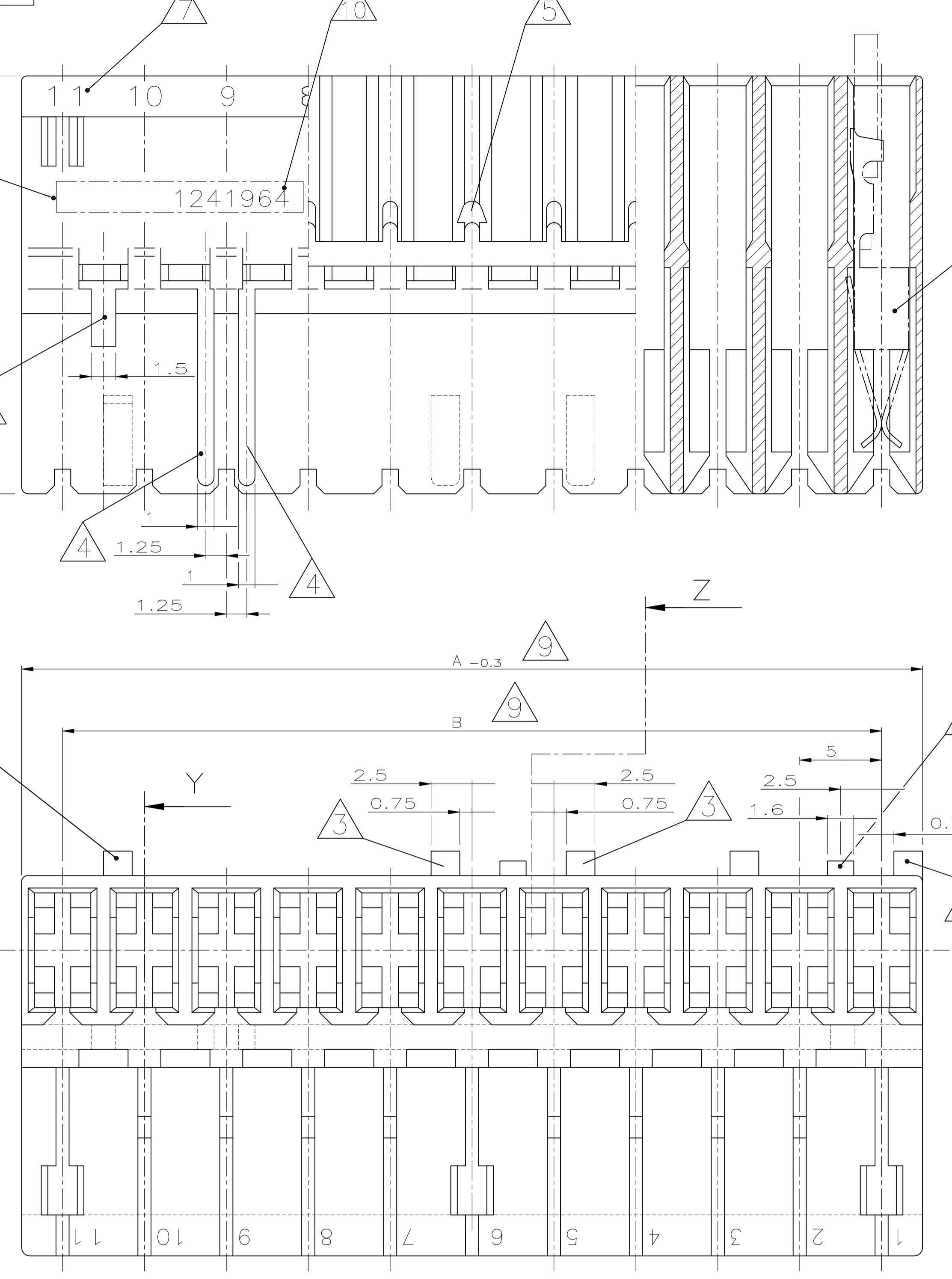
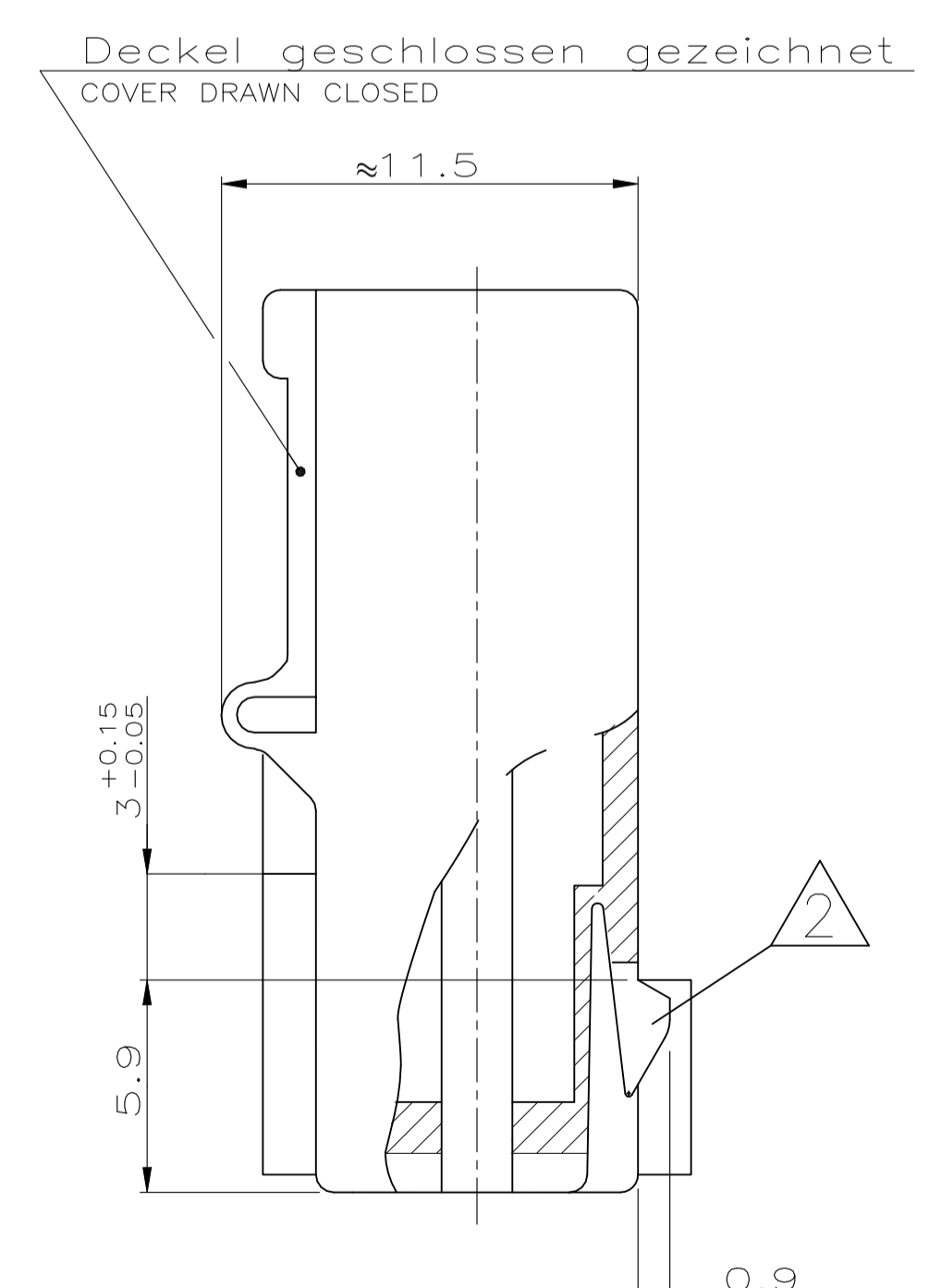
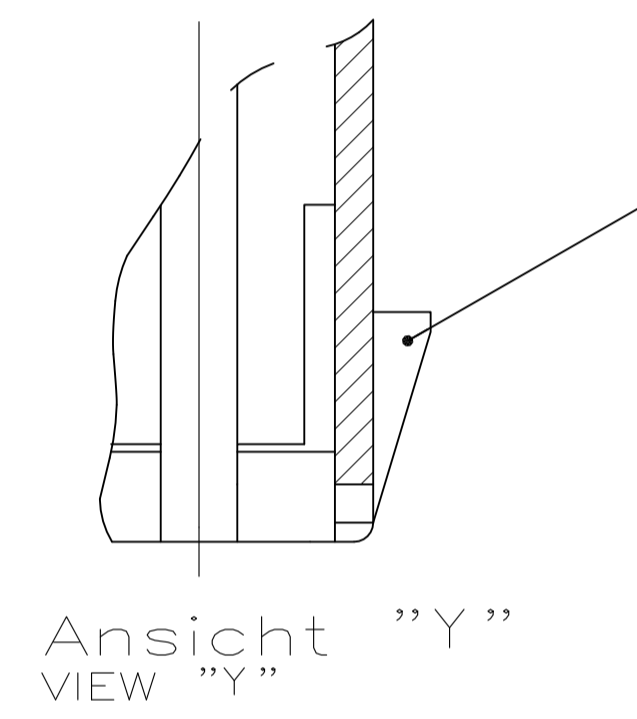
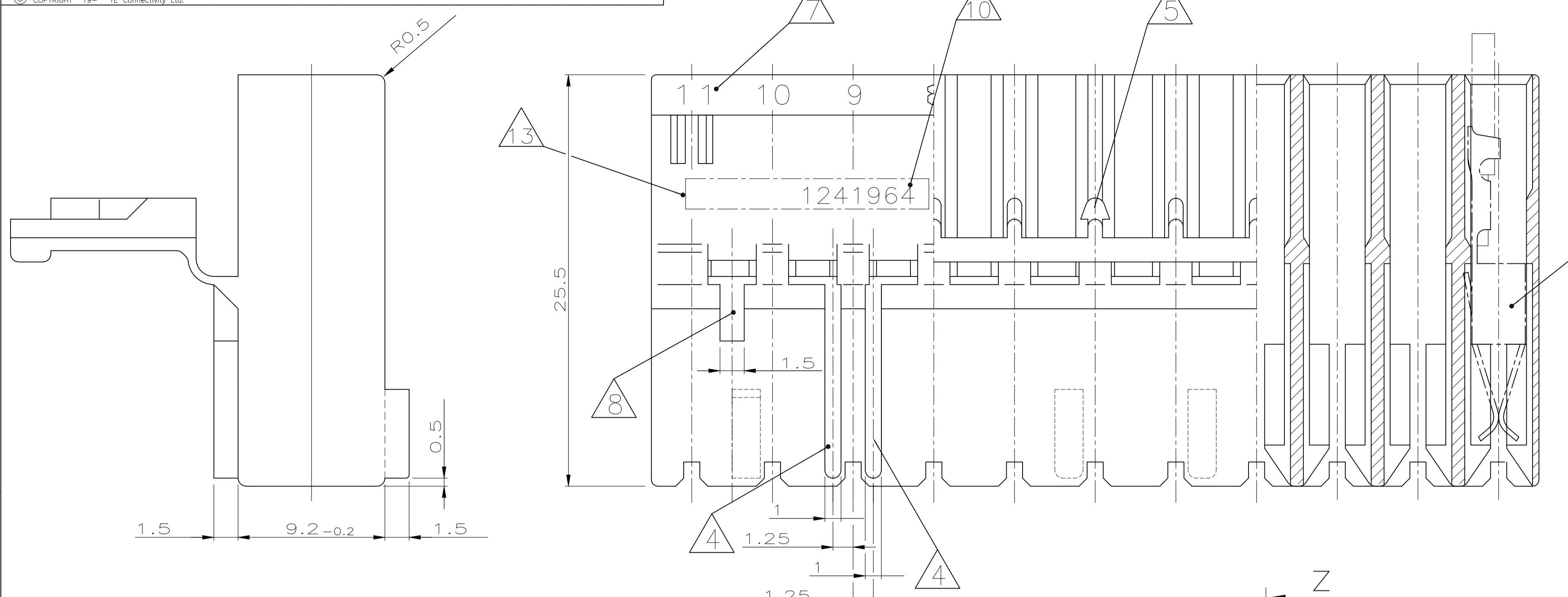


REVISIONS				
REV	DATE	DESCRIPTION	BY	APPD
A14	30AUG2021	ECR-21-114837	PJ	FL



- Bemerkungen  
NOTES
- 1 Kammer geeignet für AMP Timer-Kontakte: PN 926965  
CAVITY SUITABLE TO AMP TIMER-CONTACTS: PN 926973  
PN 926005  
PN 926006  
PN 927833  
PN 927837
  - 2 Rasthaken zwischen Kammer Nr. ... (siehe Blatt 2 von 2)  
LOCKING LATCH BETWEEN CAVITY NO. ... (SEE SHEET 2 OF 2)
  - 3 Kodierrippen nach unten (Lage "c") oder oben (Lage "d")  
versetzt, bei Kammer Nr. ... (siehe Blatt 2 von 2)  
KEYING RIB POSITION "c" OR POSITION "d",  
AT CAVITY NO. ... (SEE SHEET 2 OF 2)
  - 4 Polarisierungsrippen durchgehend bis Scharnier, nach unten (Lage "a")  
oder oben (Lage "b") versetzt, bei Kammer Nr. ... (siehe Blatt 2 von 2)  
POLARIZATION RIB GO THROUGH TO HINGE, POSITION "a" OR  
"b", AT CAVITY NO. ... (SEE SHEET 2 OF 2)
  - 5 Verrastung für Deckel bei Kammer Nr. ... (siehe Blatt 2 von 2)  
LOCKING DEVICE FOR COVER AT CAVITY NO. ... (SEE SHEET 2 OF 2)
  - 6 Kodierrippen bei erster Kammer, Lage "c", und letzter Kammer, Lage "d",  
bündig mit Gehäuseaußenkante  
KEYING RIBS AT THE FIRST CAVITY, POSITION "c", AND THE LAST CAVITY, POSITION "d",  
FLUSH TO THE EDGE OF THE CONNECTOR
  - 7 Kammernummer  
CAVITY NUMBER
  - 8 Tiefenanschlag zwischen Kammer Nr. 1 und 2, ebenfalls  
zwischen der letzten und vorletzten Kammer  
MATING STOP BETWEEN CAVITY NO. 1 AND 2, ALSO  
BETWEEN THE LAST AND THE LAST BUT ONE CAVITY
  - 9 Maß A und Maß B siehe Blatt 2 von 2  
DIMENSION A AND DIMENSION B SEE SHEET 2 OF 2
  - 10 TE PART NUMBER (OPTIONAL)
  - 11 Angeschrägte Kodierrippen nach unten (Lage "c") oder oben (Lage "d")  
versetzt, bei Kammer Nr. ... (siehe Blatt 2 von 2)  
SWAGED KEYING RIB POSITION "c" OR POSITION "b",  
AT CAVITY NO. ... (SEE SHEET 2 OF 2)
  - 12 Material entspricht den Anforderungen der EN 60335 (incl. glow wire test 750°C,  
ohne Flamme  
MATERIAL CORRESPONDS TO REQUIREMENT EN 60335 ( INCL.GLOW WIRE TEST 750°C,  
NO FLAME)
  - 13 AREA FOR TYCO ELECTRONICS LOGO ACC. TO SPEC. 202-36  
Bereich für TYCO ELECTRONICS Logo nach Spec. 202-36
  - 14 Passender TE Gegenstecker: (siehe Stückliste)  
MATED WITH TE CONNECTOR: (SEE PARTS LIST)
  - 15 Generell passende Flachsteckerwanne siehe RAST5 Vorgabe  
GENERAL SUITABLE TAB HEADER HOUSING SEE RAST5 PERFORMANCE
  - 16 Leiterplattenanschluß siehe Zeichnung 88-9935-2  
CONNECTION TO THE PC BOARD SEE DRAWING 88-9935-2
  - 17 PRELIMINARY PART NOT RELEASED FOR PRODUCTION
  - 18 MATERIAL ACC. TO UL94-V0 AND GWPT 750°C NO FLAME

9 DOUBLE SOURCE RESIN: ALTERNATIVE RESIN UNDER APPROVAL

Tabelle mit Ausführungsvarianten  
und Bestellnummern auf Blatt 2 von 2  
LIST WITH DIFFERENT STYLINGS AND  
PARTNUMBERS SEE SHEET 2 OF 2

CUSTOMER PART NO	AMP PART NO	REV.	PCS.	MATERIAL	SURFACE COLOR	DESCRIPTION	ITEM NO
-	-	-	-	-	-	-	-
-	-	-	-	-	-	-	-
-	-	-	-	-	-	-	-

THIS DRAWING IS A CONTROLLED DOCUMENT.

DIMENSIONS: mm	TOLERANCES UNLESS OTHERWISE SPECIFIED: 2 DECIMALS 0.130 ± 0.005 1.270 ± 0.010 2.540 ± 0.020 3.175 ± 0.025 4.775 ± 0.030 ANGLES: ± 1°	DIN Mahnke, B 26-NOV-02 Stredak, F 29-NOV-02 Bleicher, B 30-NOV-02	NAME 2-11 POS. STANDARD-TIMER HOUSING WITH INTERIOR LOCKING, PITCH 5mm 2-11 pos. Standard-Timer Gehäuse mit Innenverrastung, RAST5
SEE SHEET 2/2 / siehe Blatt 2/2		SIZE A1	SCALE 5:1
MATERIAL SEE SHEET 2/2 Siehe Blatt 2/2		FINISH -	WEIGHT -

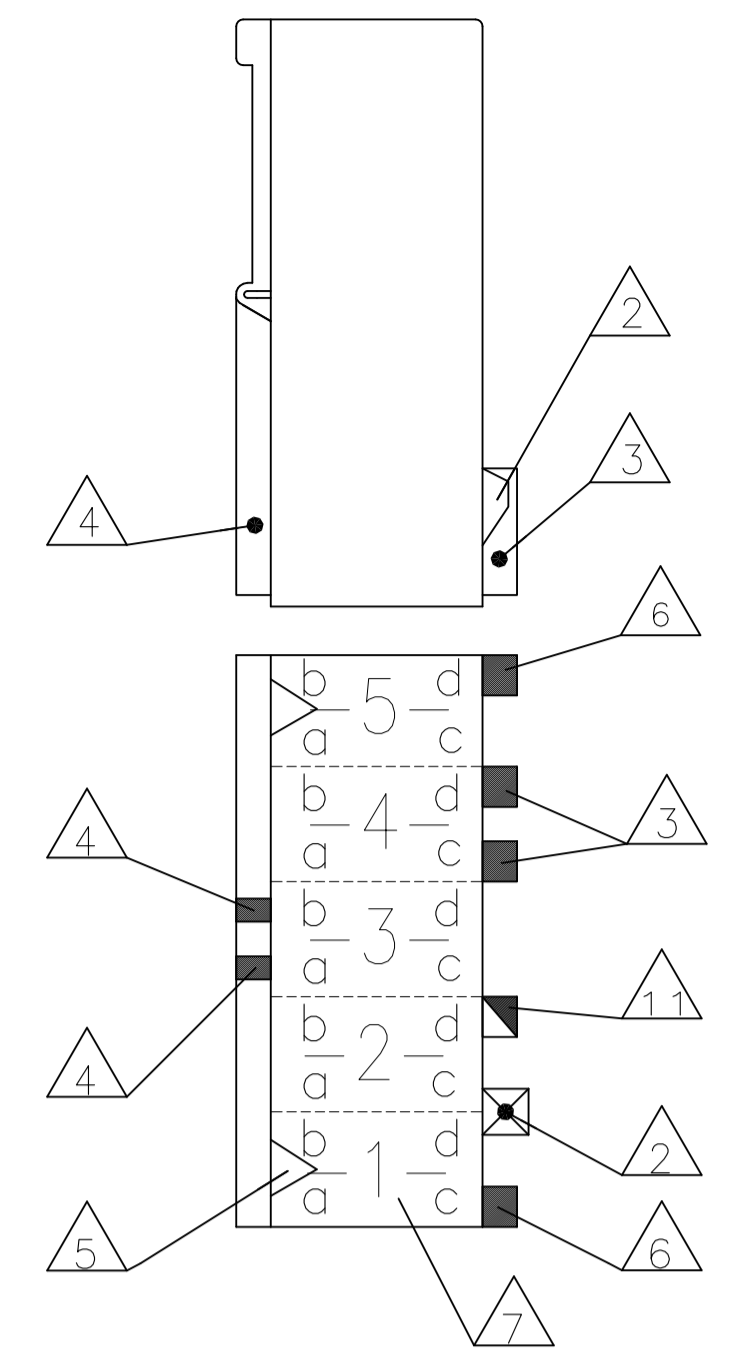
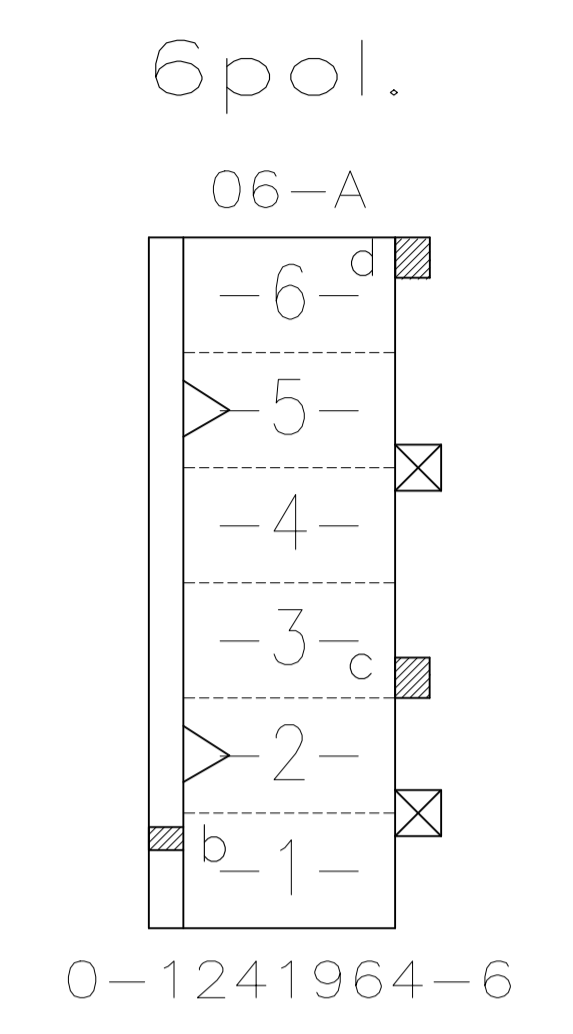
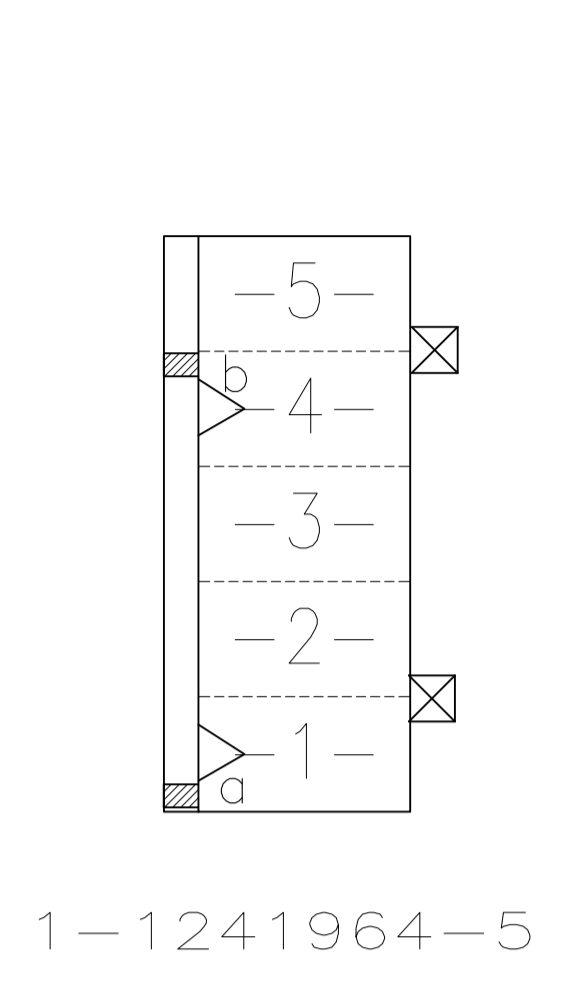
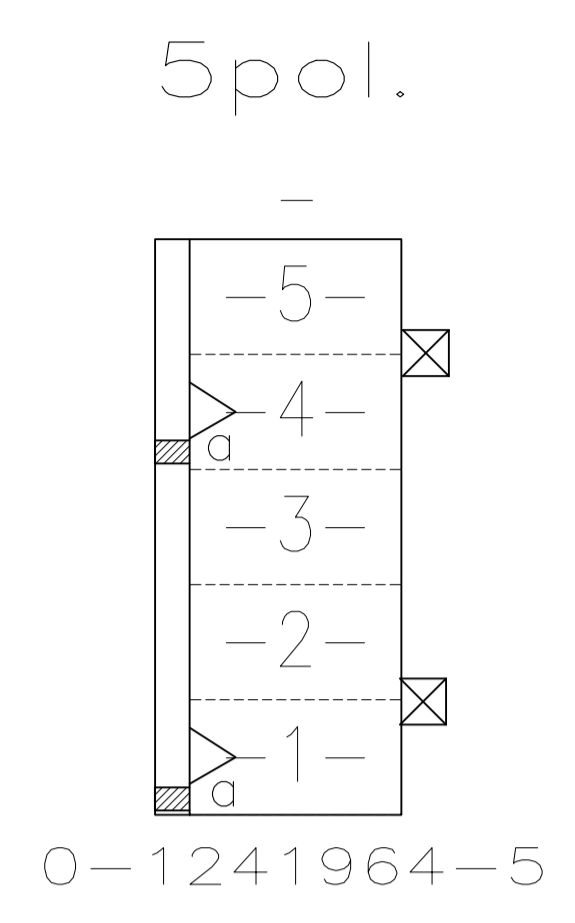
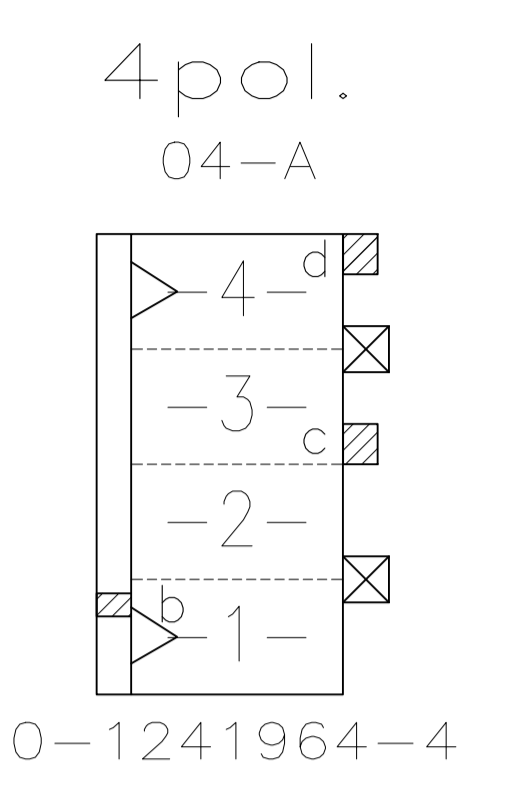
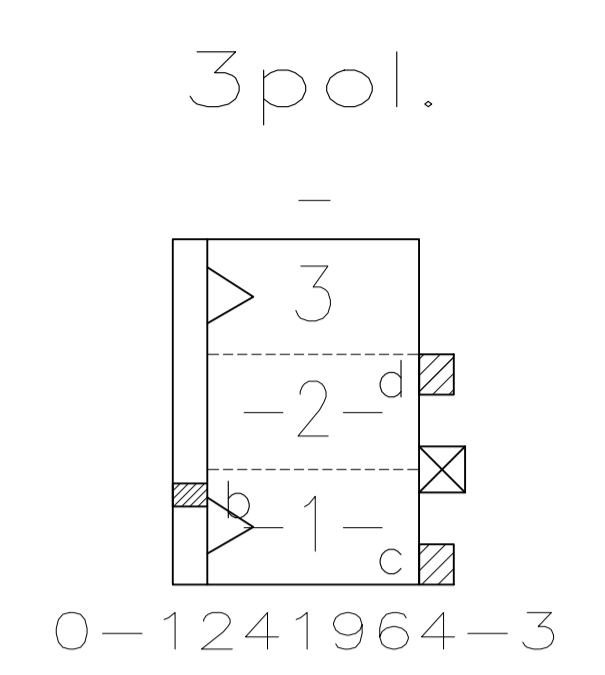
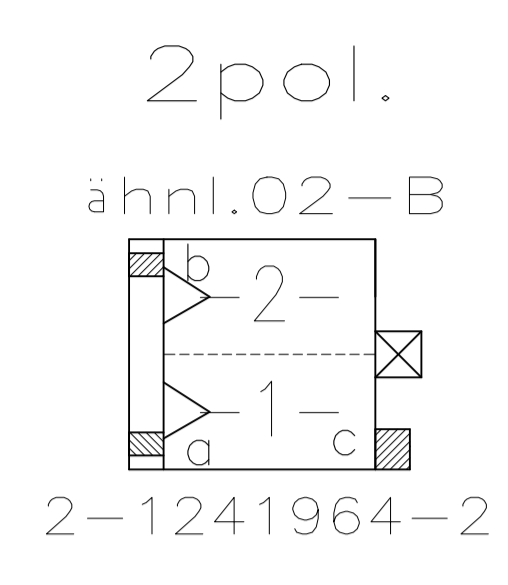
TE Connectivity Ltd.

100779 © 1241964

CUSTOMER DRAWING

SCALE 5:1 SHEET 1 OF 2 REV A14

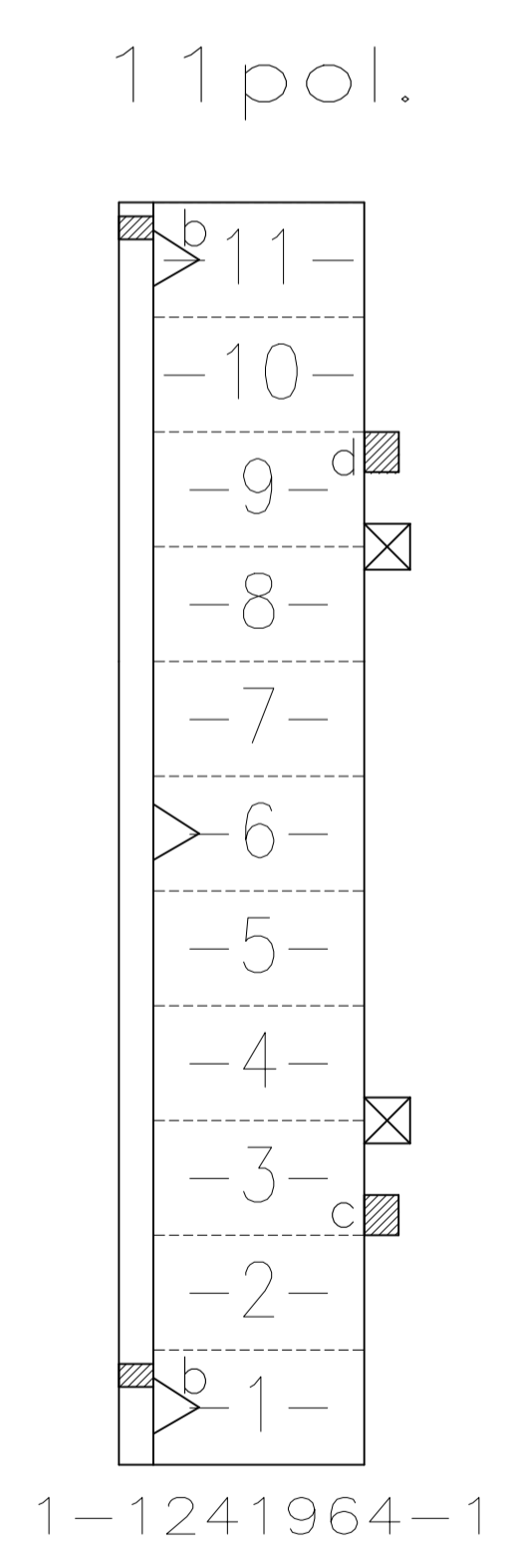
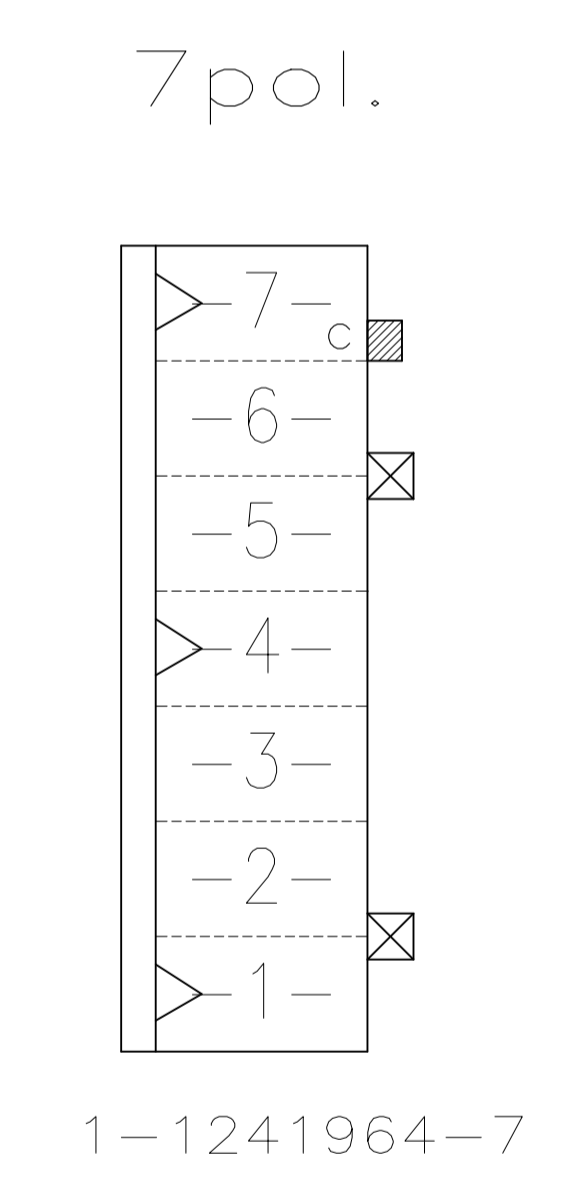
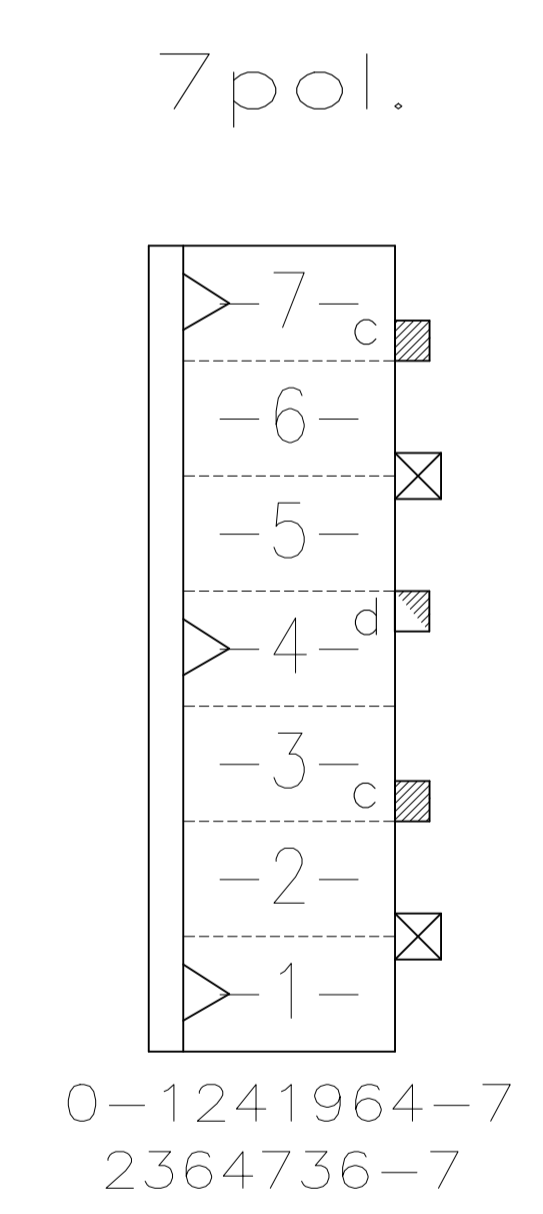
REVISIONS					
REV	DATE	DESCRIPTION	BY	CHK	APPV
-	-	SEE SHEET 1	-	-	-



**Darstellung:**  
 Lage der Kodier- und  
 Polarisierungsrippen und  
 Rastfedern am Gehäuse

**DESCRIPTION:**  
 POSITION OF KEYING RIB AND THE  
 LOCKING LATCH AT THE HOUSINGS

TE PART NUMBER (OPTIONAL)



TE PART NO.	POS.	DIM A	DIM B	COLOUR	MATERIAL	MATED WITH	
2364736-7	7	35	30	BLUE	PA66 <sup>13</sup> / <sub>UL94-V0 &amp; GWEPT 750°C n.f.</sub>	<sup>13</sup> / <sub>16</sub>	
-	-	-	-	-	-	-	
1-1241964-1	11	55	50	NATURE/natur	PA66 UL94V-2	<sup>12</sup> / <sub>16</sub>	
1-1241964-7	7	35	30	NATURE/natur		<sup>13</sup> / <sub>16</sub>	
0-1241964-7	7	35	30	NATURE/natur		<sup>13</sup> / <sub>16</sub>	
-	-	-	-	-		-	-
0-1241964-6	6	30	25	NATURE/natur		<sup>13</sup> / <sub>16</sub>	
-	-	-	-	-		-	-
1-1241964-5	5	25	20	NATURE/natur		<sup>13</sup> / <sub>16</sub>	
0-1241964-5	5	25	20	NATURE/natur		<sup>13</sup> / <sub>16</sub>	
0-1241964-4	4	20	15	NATURE/natur		<sup>13</sup> / <sub>16</sub>	
-	-	-	-	-		-	-
-	-	-	-	-		-	-
-	-	-	-	-		-	-
-	-	-	-	-		-	-
-	-	-	-	-		-	-
-	-	-	-	-		-	-
0-1241964-3	3	15	10	NATURE/natur		<sup>13</sup> / <sub>16</sub>	
-	-	-	-	-		-	-
2-1241964-2	2	10	5	NATURE/natur	<sup>13</sup> / <sub>16</sub>		
Bestell-Nr.	Pol-Zahl	Maß A	Maß B	Farbe	Material	Gegenstecker <sup>14</sup> / <sub>14</sub>	
PART NO.	POS.	DIM A	DIM B	COLOUR	MATERIAL	MATED WITH <sup>14</sup> / <sub>14</sub>	

THIS DRAWING IS A CONTROLLED DOCUMENT.

DIMENSIONS: mm

TOLERANCES UNLESS OTHERWISE SPECIFIED:  
 0. PLC ± -  
 1. PLC ± 0.2mm  
 2. PLC ± -  
 3. PLC ± -  
 4. PLC ± -  
 ANGLES ± 1°

MATERIAL: SEE SHEET 2/2

FINISH: -

DIN: 26-NOV-02  
 MAHNE, B  
 29-NOV-02  
 STREDAK, F  
 30-NOV-02  
 BLEICHER, B

NAME: 2-11 POS. STANDARD-TIMER HOUSING WITH INTERIOR LOCKING, PITCH 5mm

PRODUCT SPEC: 108-18049-1

APPLICATION SPEC: -

SIZE: A1

CAGE CODE: 00779

DRAWING NO: 1241964

RESTRICTED TO: -

WEIGHT: 0

CUSTOMER DRAWING

SCALE: 5:1

SHEET: 2 OF 2

REV: A14

TE Connectivity Ltd.

## X-ON Electronics

Largest Supplier of Electrical and Electronic Components

*Click to view similar products for [Automotive Connectors](#) category:*

*Click to view products by [TE Connectivity](#) manufacturer:*

Other Similar products are found below :

[003-018-000](#) [60403001](#) [60993906-B](#) [M902-2131](#) [M902-2161](#) [72.330.1035.1](#) [73.353.4028.0](#) [F119300-B](#) [F166900](#) [F258300-B](#) [F358300-B](#)  
[F407400](#) [F444110](#) [F487000](#) [F509500B-B](#) [827153-1](#) [8N1515-32-24P](#) [9-1326729-8](#) [925474-1](#) [928905-1](#) [964562-4](#) [968782-1](#) [GT17SA-8DS-](#)  
[HU](#) [98891-1012](#) [98947-1016](#) [12004147](#) [12004475-L](#) [12010290](#) [12010309-B](#) [12015454](#) [12020219-B](#) [12020308](#) [12041318-B](#) [12052225-L](#)  
[12052466](#) [12059125](#) [12064869](#) [12004327-B](#) [12010503-B](#) [12015308](#) [12015384](#) [12015909](#) [1-21030-1](#) [12041254](#) [12041318](#) [12047946-B](#)  
[12047957](#) [12047957-L](#) [12059473](#) [12066261](#)