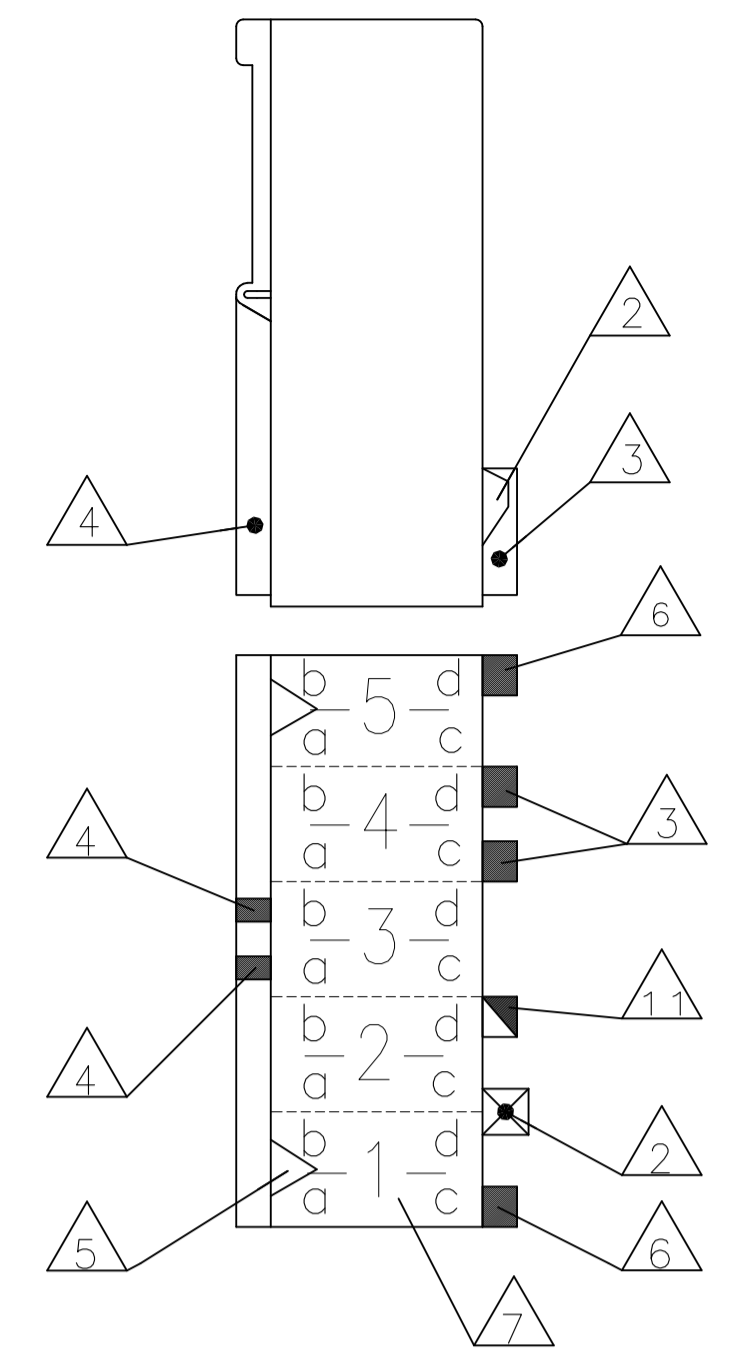
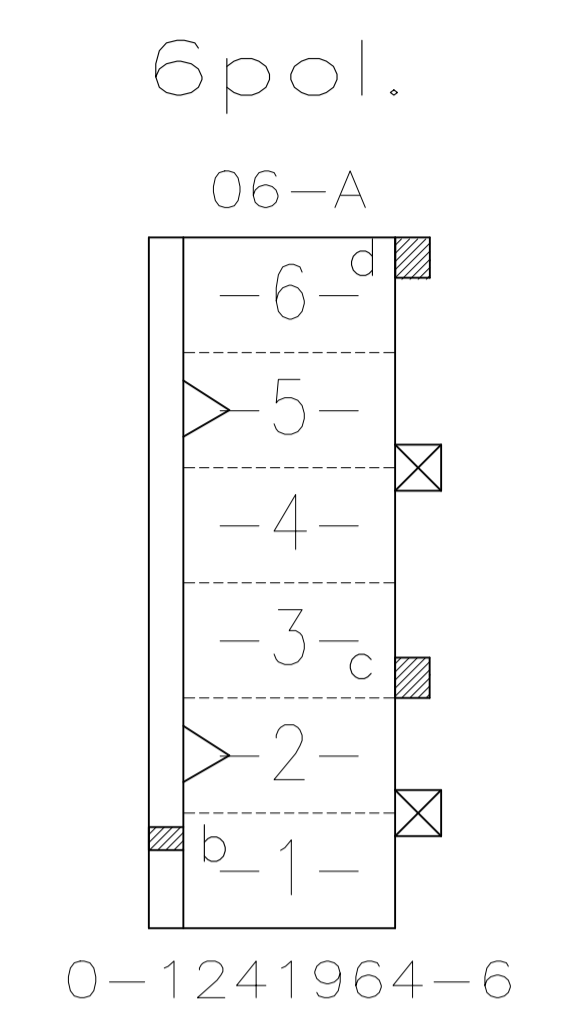
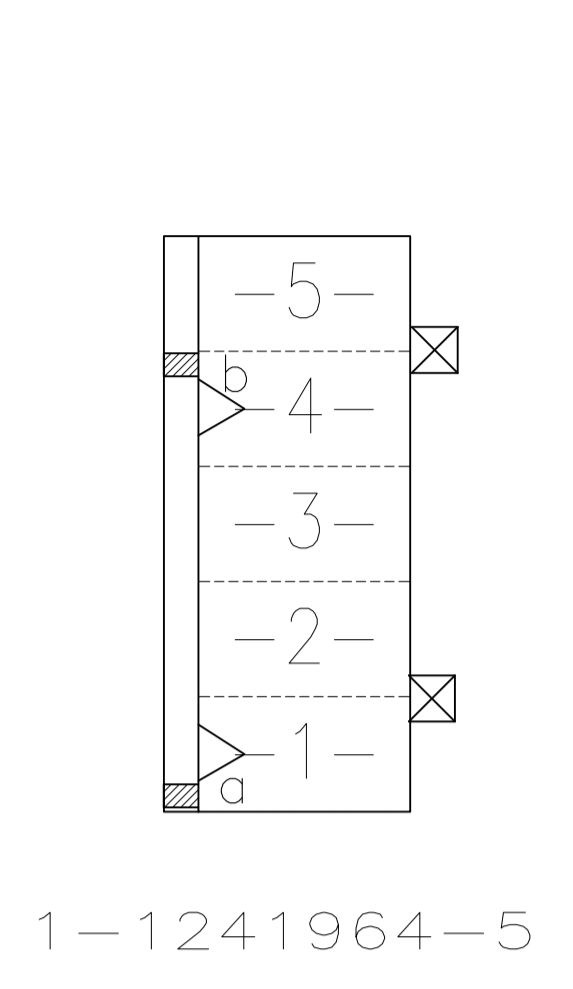
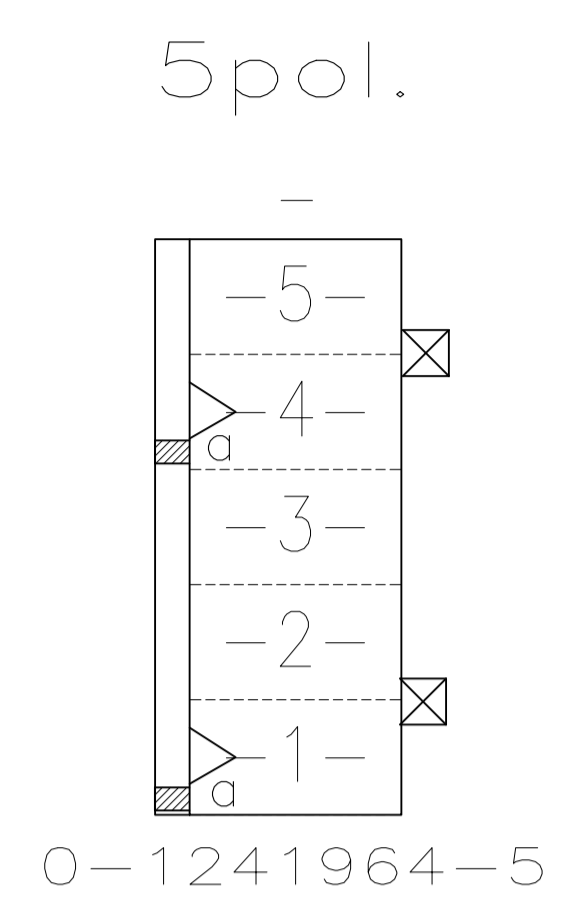
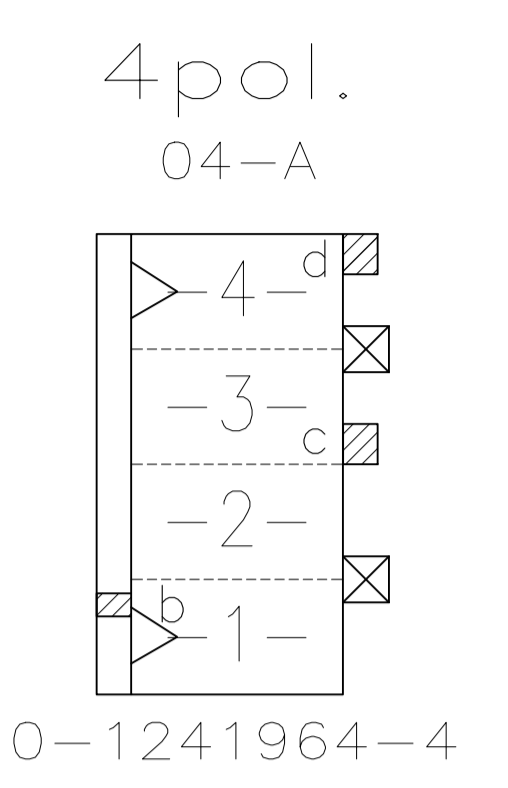
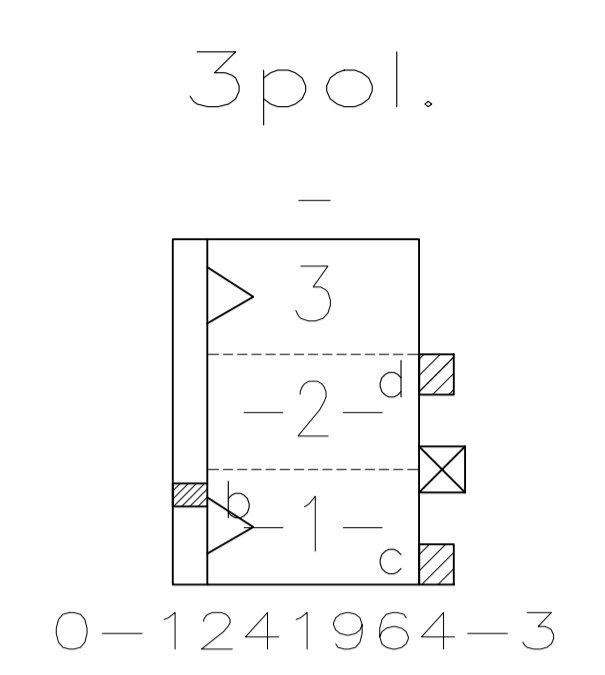
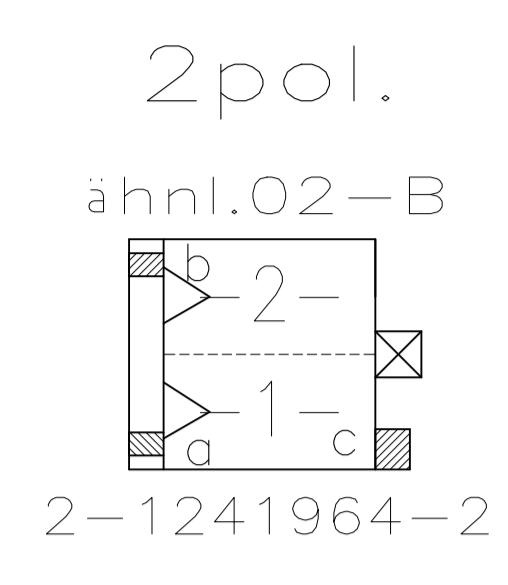


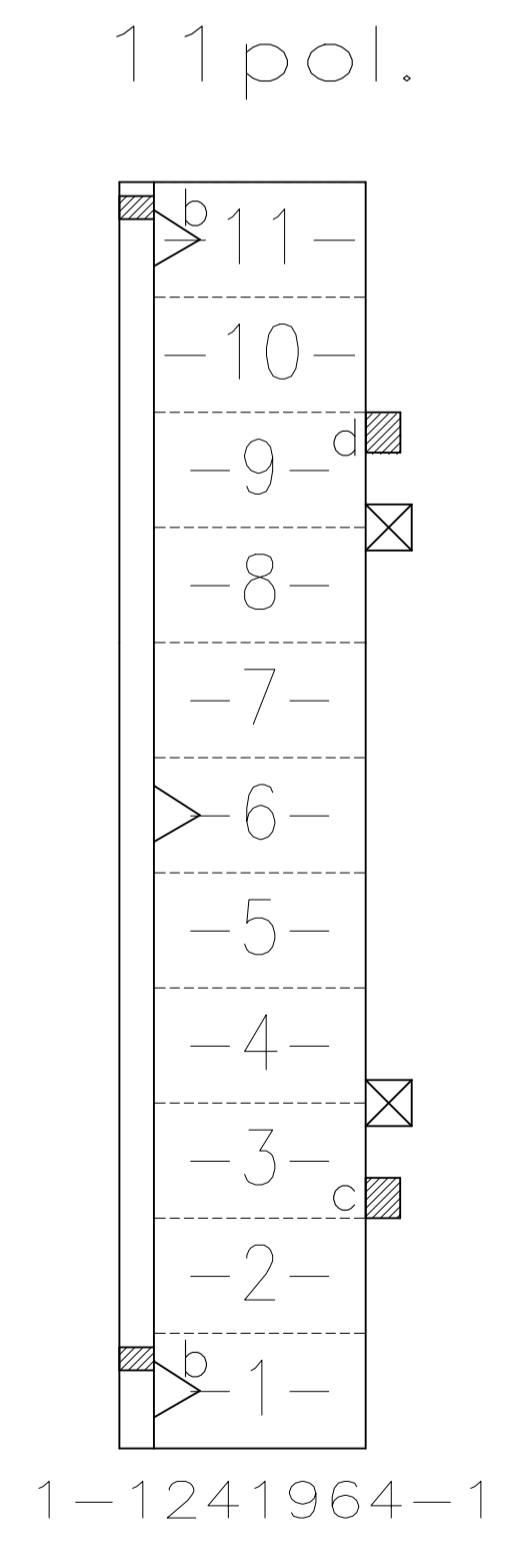
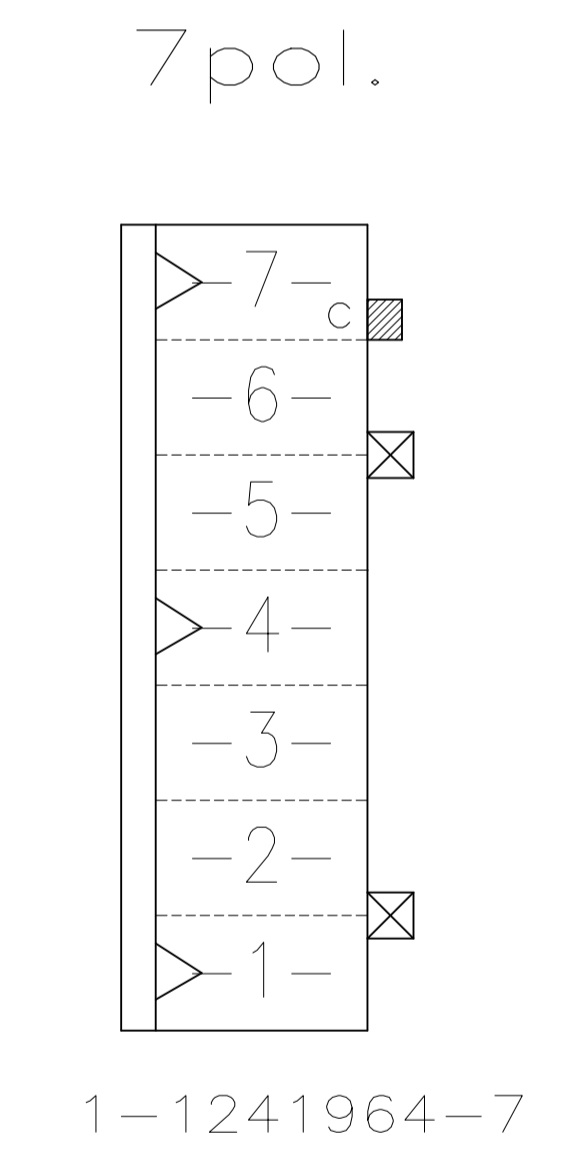
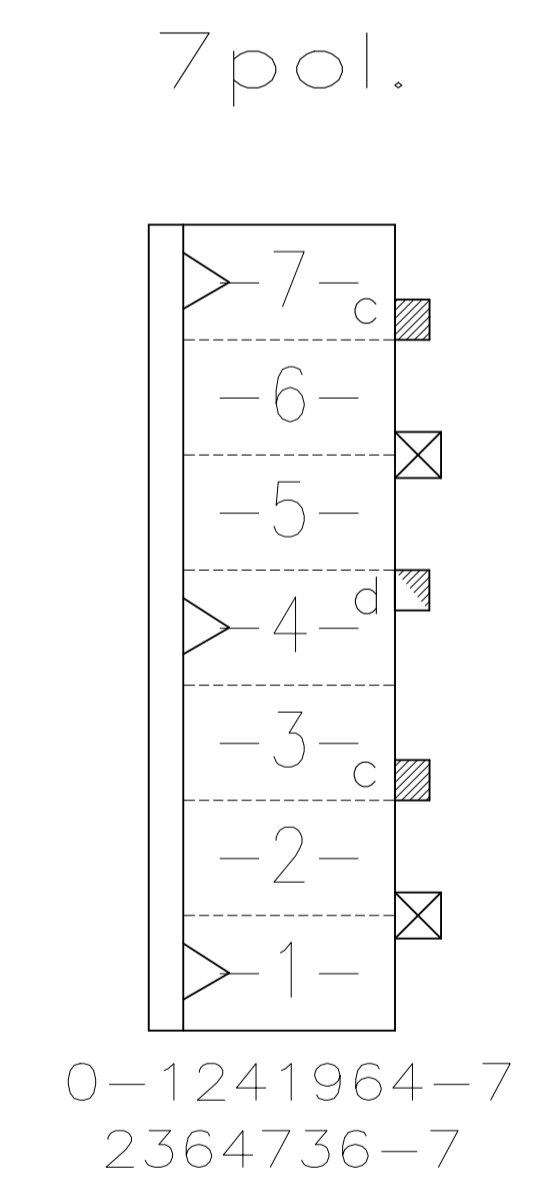
REVISIONS					
REV	DATE	DESCRIPTION	BY	CHK	APPV
-	-	SEE SHEET 1	-	-	-



Darstellung:
 Lage der Kodier- und
 Polarisierungsrippen und
 Rastfedern am Gehäuse

DESCRIPTION:
 POSITION OF KEYING RIB AND THE
 LOCKING LATCH AT THE HOUSINGS

TE PART NUMBER (OPTIONAL)



TE PART NO.	POS.	DIM A	DIM B	COLOUR	MATERIAL	MATED WITH	
2364736-7	7	35	30	BLUE	PA66 ¹³ / _{UL94-V0 & GWEPT 750°C n.f.}	¹³ / ₁₄	
-	-	-	-	-	-	-	
1-1241964-1	11	55	50	NATURE/natur	PA66 UL94V-2	¹³ / ₁₄	
1-1241964-7	7	35	30	NATURE/natur		¹³ / ₁₄	
0-1241964-7	7	35	30	NATURE/natur		¹³ / ₁₄	
-	-	-	-	-		-	-
0-1241964-6	6	30	25	NATURE/natur		¹³ / ₁₄	
-	-	-	-	-		-	-
1-1241964-5	5	25	20	NATURE/natur		¹³ / ₁₄	
0-1241964-5	5	25	20	NATURE/natur		¹³ / ₁₄	
0-1241964-4	4	20	15	NATURE/natur		¹³ / ₁₄	
-	-	-	-	-		-	-
-	-	-	-	-		-	-
-	-	-	-	-		-	-
-	-	-	-	-		-	-
-	-	-	-	-		-	-
-	-	-	-	-		-	-
0-1241964-3	3	15	10	NATURE/natur		¹³ / ₁₄	
-	-	-	-	-		-	-
2-1241964-2	2	10	5	NATURE/natur	¹³ / ₁₄		
Bestell-Nr.	Pol-Zahl	Maß A	Maß B	Farbe	Material	Gegenstecker ¹⁴	
PART NO.	POS.	DIM A	DIM B	COLOUR	MATERIAL	MATED WITH ¹⁴	

THIS DRAWING IS A CONTROLLED DOCUMENT.

DIMENSIONS: mm

TOLERANCES UNLESS OTHERWISE SPECIFIED:

0. PLC	± 0.2mm
1. PLC	± 0.2mm
2. PLC	± 0.2mm
3. PLC	± 0.2mm
4. PLC	± 0.2mm
ANGLES	± 1°

MATERIAL: SEE SHEET 2/2

FINISH: -

DIN: 26-NOV-02

MAHNE, B

STREDAK, F

REICHER, B

NAME: 2-11 POS. STANDARD-TIMER HOUSING WITH INTERIOR LOCKING, PITCH 5mm

PRODUCT SPEC: 108-18049-1

APPLICATION SPEC: -

SIZE: A1

CAGE CODE: 00779

DRAWING NO: 1241964

RESTRICTED TO: -

WEIGHT: 0

CUSTOMER DRAWING

SCALE: 5:1

SHEET: 2 OF 2

REV: A14

X-ON Electronics

Largest Supplier of Electrical and Electronic Components

Click to view similar products for [Headers & Wire Housings](#) category:

Click to view products by [TE Connectivity](#) manufacturer:

Other Similar products are found below :

[892-18-020-10-001101](#) [58102-G61-06LF](#) [582553-1](#) [0009485154](#) [009176003701906](#) [0050291907](#) [LY20-4P-DT1-P1E-BR](#) [02.125.8002.8](#)
[609-3404](#) [61062-3](#) [61082-181009](#) [622-3653LF](#) [63453-116](#) [636-1030](#) [636-1427](#) [636-3427](#) [636-4007](#) [641938-9](#) [641991-4](#) [644827-2](#) [65817-](#)
[010LF](#) [65817-015LF](#) [65863-015LF](#) [66207-023LF](#) [67095-007LF](#) [67601157](#) [68645-018](#) [68648-049](#) [70.362.1628.0](#) [70-4210](#) [70-4226B](#) [70-](#)
[4853B](#) [707-5020](#) [707-5028](#) [71.350.2428.0](#) [71918-208LF](#) [71961-016LF](#) [733-134](#) [733-162](#) [754199-000](#) [760-3052](#) [787-8014-00](#) [79531-3000](#)
[FCN-360C032-B](#) [FCN-367T-T012/H](#) [FCN-723D010/2](#) [80.063.4001.1](#) [800-90-001-10-001000](#) [800-90-010-10-002000](#) [801-43-002-10-013000](#)