

4

3

2

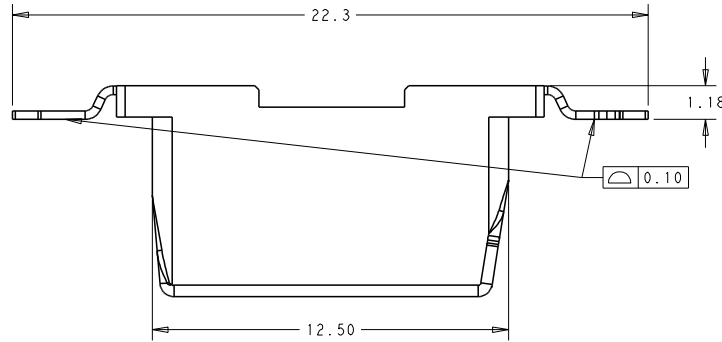
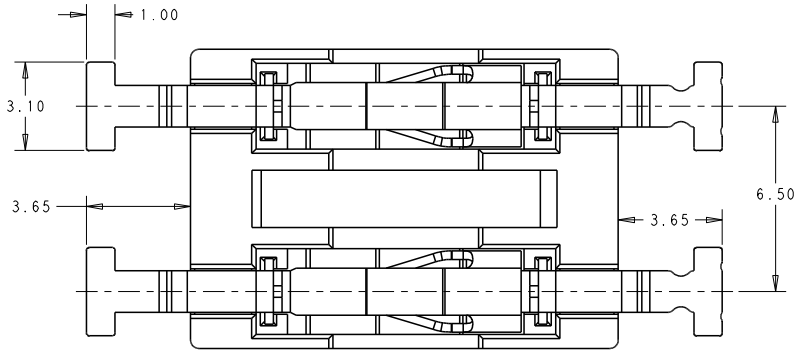
1

THIS DRAWING IS UNPUBLISHED. RELEASED FOR PUBLICATION 20
© COPYRIGHT 20 BY - ALL RIGHTS RESERVED.

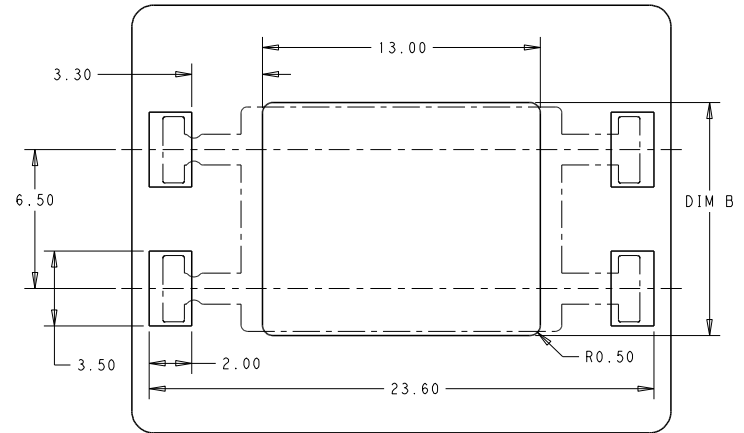
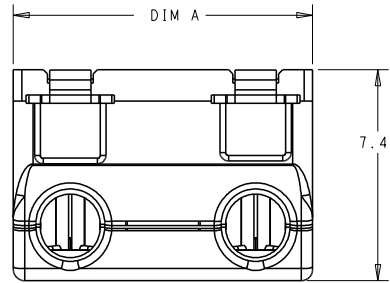
| REVISIONS | | | | |
|-----------|-----|---------------------------|-----------|----------|
| P | LYR | DESCRIPTION | DATE | DWN APVD |
| A | | FIRST VERSION | 13NOV2018 | G.F S.M |
| A1 | | ADD OPERATING TEMPERATURE | 20NOV2019 | G.F S.M |
| | | | | |
| | | | | |

NOTES :

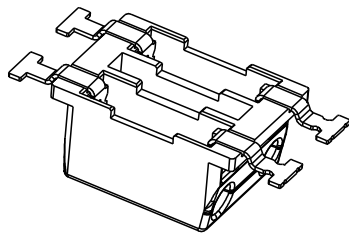
- MATERIALS AND FINISH:
- HOUSING: HIGH THERMAL PLASTIC, COLOR: WHITE
- CONTACTS: COPPER ALLOY, FINISH: PRE-TIN OVER NICKEL UNDERPLATE
- MUST COMPLY WITH DIRECTIVE 2002/95/EC (ROHS)
- OPERATING TEMPERATURE: -55°C-105°C
- WIRE TYPES AND SIZES ACCEPTED
SOLID WIRE: 18AWG, 20AWG, 22AWG, 24AWG
STRAND WIRE: 18AWG (STRANDS: 16); 20AWG (STRANDS: 7); 22AWG (STRANDS: 7)
24AWG (UL1061/STRANDS: 7)
MAX INSULATION OD: 2.1mm MAX.
STRIP LENGTH: 8.0±0.5mm
- PACKAGED IN TAPE AND REEL



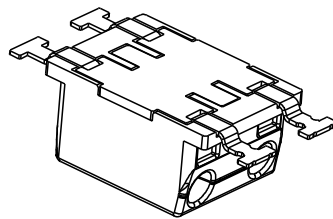
SCALE 8:1



SCALE 6:1



W/O CAP TYPE
P/N: 2834331-1/2



WITH CAP TYPE
P/N: 1-2834331-1/2

| | | | |
|-------|-------|----------|-------------|
| 10.9 | 10.5 | 2 | 1-2834331-2 |
| 10.9 | 10.5 | 2 | 2834331-2 |
| 4.4 | 4.0 | 1 | 1-2834331-1 |
| 4.4 | 4.0 | 1 | 2834331-1 |
| DIM B | DIM A | POLES No | PART NO |

| DIMENSIONS: | | TOLERANCES UNLESS OTHERWISE SPECIFIED: | | DWN: GEORGE FU 13NOV2018 | | TE Connectivity | |
|-------------|--|--|-------|---------------------------|------------------|--|--------------|
| (mm) | | 0 PLC | ± | CHK: GEORGE FU 13NOV2018 | NAME | 6.5mm PITCH ITB RELEASABLE POKE-IN CONN. | |
| | | 1 PLC | ±0.20 | APVD: GEORGE FU 13NOV2018 | SIZE | CAGE CODE | DRAWING NO |
| | | 2 PLC | ±0.13 | PRODUCT SPEC | A2 | 00779 | ©=2834331 |
| | | 3 PLC | ± | APPLICATION SPEC | SCALE | 4:1 | SHEET 1 OF 1 |
| | | 4 PLC | ± | ANGLES | REV | A1 | |
| | | ANGLES FINISH | ± | NOTE 1 | CUSTOMER DRAWING | | |

X-ON Electronics

Largest Supplier of Electrical and Electronic Components

Click to view similar products for [Lighting Connectors](#) category:

Click to view products by [TE Connectivity](#) manufacturer:

Other Similar products are found below :

[293300-7](#) [293660-5](#) [CNX_H03_NTP](#) [30-9767-BU](#) [3605](#) [3-21030-1](#) [ZCH-110-RGB-I](#) [503471-0290](#) [ZCH-110-RGB-J](#) [217-0716-200](#)
[1954563-1](#) [1-293657-2](#) [2834036-1](#) [2834037-1](#) [1-2213222-4](#) [2-2213222-4](#) [2213222-4](#) [2834122-3](#) [2834122-5](#) [2834135-2](#) [FLA-R4142-30](#)
[FLA-R4162-30](#) [FLA-R2142-30](#) [FLA-R2141-30](#) [FLA-R2162-30](#) [FLA-R2161-30](#) [FLA-R0161-30](#) [FLA-R0141-30](#) [FLA-R0142-30](#) [FLA-](#)
[R0162-30](#) [FLA-C00-00](#) [DGA00010553](#) [CNXV04NTP](#) [104128-0610](#) [503485-0000 \(Cut Strip\)](#) [503485-0000 \(Loose Piece\)](#) [503485-0000](#)
[\(MINI Reel\)](#) [1-2834074-2](#) [1-2834074-3](#) [1357-AC PLUG W2C \(CHINA\)](#) [1357-AC PLUG W2 \(USA\)](#) [104266-0110](#) [CNXV02NTP](#) [2106212-1](#)
[2-2834074-2](#) [104266-0210](#) [293470-1](#) [293651-2](#) [293651-4](#) [1-2834006-2](#)