

4

3

2

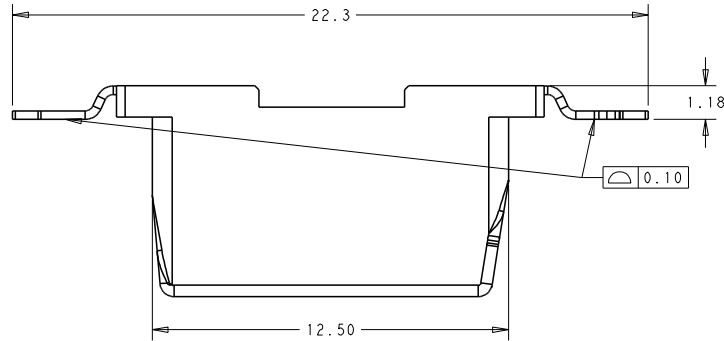
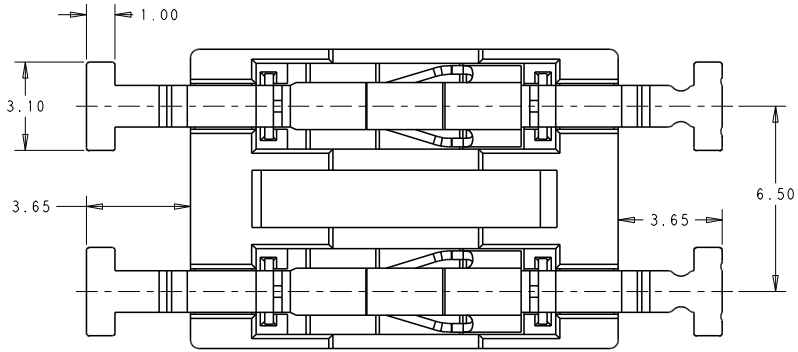
1

THIS DRAWING IS UNPUBLISHED. RELEASED FOR PUBLICATION 20
© COPYRIGHT 20 BY - ALL RIGHTS RESERVED.

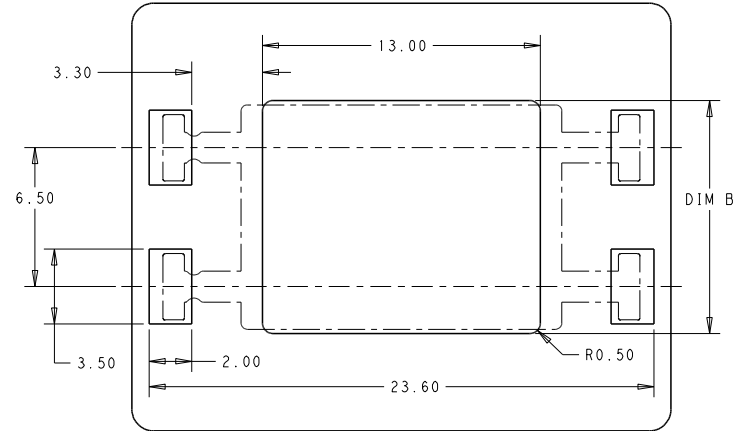
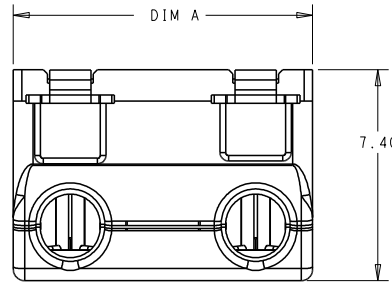
REVISIONS				
P	LYR	DESCRIPTION	DATE	DWN APVD
A		FIRST VERSION	13NOV2018	G.F S.M
A1		ADD OPERATING TEMPERATURE	20NOV2019	G.F S.M

NOTES :

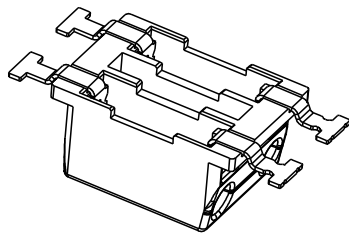
- MATERIALS AND FINISH:
- HOUSING: HIGH THERMAL PLASTIC, COLOR: WHITE
- CONTACTS: COPPER ALLOY, FINISH: PRE-TIN OVER NICKEL UNDERPLATE
- MUST COMPLY WITH DIRECTIVE 2002/95/EC (ROHS)
- OPERATING TEMPERATURE: -55°C-105°C
- WIRE TYPES AND SIZES ACCEPTED
SOLID WIRE: 18AWG, 20AWG, 22AWG, 24AWG
STRAND WIRE: 18AWG (STRANDS: 16); 20AWG (STRANDS: 7); 22AWG (STRANDS: 7)
24AWG (UL1061/STRANDS: 7)
MAX INSULATION OD: 2.1mm MAX.
STRIP LENGTH: 8.0±0.5mm
- PACKAGED IN TAPE AND REEL



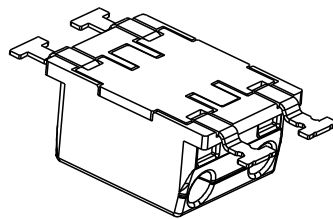
SCALE 8:1



SCALE 6:1



W/O CAP TYPE
P/N: 2834331-1/2



WITH CAP TYPE
P/N: 1-2834331-1/2

10.9	10.5	2	1-2834331-2
10.9	10.5	2	2834331-2
4.4	4.0	1	1-2834331-1
4.4	4.0	1	2834331-1
DIM B	DIM A	POLES No	PART NO

THIS DRAWING IS A CONTROLLED DOCUMENT.		DWN: GEORGE FU 13NOV2018	TE Connectivity	
		CHK: GEORGE FU 13NOV2018		
		APVD: SHEI MING 13NOV2018	NAME: 6.5mm PITCH ITB RELEASABLE POKE-IN CONN.	
DIMENSIONS: (mm)		PRODUCT SPEC: 108-137311	SIZE: A2	
TOLERANCES UNLESS OTHERWISE SPECIFIED:		APPLICATION SPEC: 114-137311	CAGE CODE: 00779	
0 PLC ± 1 PLC ±0.20 2 PLC ±0.13 3 PLC ± 4 PLC ± ANGLES ± FINISH		WEIGHT: -	DRAWING NO: 2834331	
MATERIAL NOTE 1		CUSTOMER DRAWING	RESTRICTED TO: -	
		SCALE: 4:1		SHEET: 1 OF 1
				REV: A1

X-ON Electronics

Largest Supplier of Electrical and Electronic Components

Click to view similar products for [Lighting Connectors](#) category:

Click to view products by [TE Connectivity](#) manufacturer:

Other Similar products are found below :

[293300-7](#) [293660-5](#) [CNX_H03_NTP](#) [30-9767-BU](#) [3605](#) [3-21030-1](#) [ZCH-110-RGB-I](#) [503471-0290](#) [ZCH-110-RGB-J](#) [217-0716-200](#)
[1954563-1](#) [1-293657-2](#) [2834036-1](#) [2834037-1](#) [1-2213222-4](#) [2-2213222-4](#) [2213222-4](#) [2834122-3](#) [2834122-5](#) [2834135-2](#) [FLA-R4142-30](#)
[FLA-R4162-30](#) [FLA-R2142-30](#) [FLA-R2141-30](#) [FLA-R2162-30](#) [FLA-R2161-30](#) [FLA-R0161-30](#) [FLA-R0141-30](#) [FLA-R0142-30](#) [FLA-](#)
[R0162-30](#) [FLA-C00-00](#) [DGA00010553](#) [CNXV04NTP](#) [104128-0610](#) [503485-0000 \(Cut Strip\)](#) [503485-0000 \(Loose Piece\)](#) [503485-0000](#)
[\(MINI Reel\)](#) [1-2834074-2](#) [1-2834074-3](#) [1357-AC PLUG W2C \(CHINA\)](#) [1357-AC PLUG W2 \(USA\)](#) [104266-0110](#) [2106212-1](#) [2-2834074-2](#)
[104266-0210](#) [293470-1](#) [293651-2](#) [293651-4](#) [1-2834006-2](#) [293651-1](#)