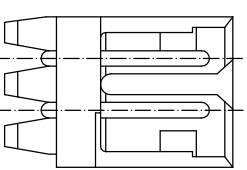
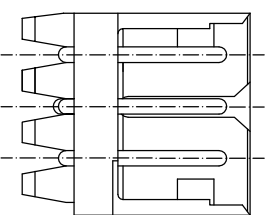
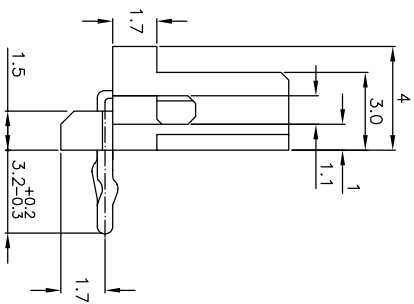
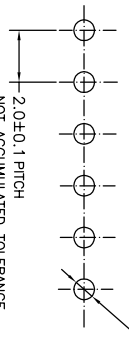


5~15 Pos.



- NOTES:
- MATERIAL: NYLON 66 (UL94V-0)
POST - TIN BRASS
 - APPLICABLE RECEPTACLE P/N 173977
 - THIS PART HAS BEEN OBSOLETE.

7-292253-4	5-292253-5	3-292253-6	1-292253-5	15	28	31.8	25.2	31.0
-4	5	-4	3	-4	1	-4	14	26
-3	5	-3	3	-3	1	-3	13	24
-2	5	-2	3	-2	1	-2	12	22
-1	5	-1	3	-1	1	-1	11	20
0	5	0	3	0	1	0	10	18
-9	4	-9	2	-9	1	-9	9	16
-8	4	-8	2	-8	1	-8	8	14
-7	4	-7	2	-7	1	-7	7	12
-6	4	-6	2	-6	1	-6	6	10
-5	4	-5	2	-5	1	-5	5	8
-4	4	-4	2	-4	1	-4	4	6
-3	4	-3	2	-3	1	-3	3	4
BLACK	YELLOW	BLUE	NATURAL	Pos.	A	B	C	D



TOLERANCES UNLESS OTHERWISE SPECIFIED:

10 > * : ±0.25

30 > * : ±0.2

100 > * : ±0.3

ANGLE : ±3°

THIS DRAWING IS A CONTROLLED DOCUMENT.

DIMENSIONS: MM

TOLERANCES UNLESS OTHERWISE SPECIFIED:

0 PIC ±

1 PIC ±

2 PIC ±

3 PIC ±

4 PIC ±

ANGLES ±

FINISH SEE NOTE

MATERIAL SEE NOTE

CUSTOMER DRAWING

DMN S.XU

CHK S.YAO

AP'D T. SASAKI

PRODUCT SPEC 108-60016

APPLICATION SPEC

WEIGHT

31JAN03

31JAN03

31JAN03

NAME

POST HEADER ASS'Y HORIZONTAL TYPE

(AMP CT CONNECTOR 2mm PITCH)

SIZE A3

DATE CODE 00779

DRAWING NO. 292253

SCALE 5:1

SHEET 1 OF 1

REV A

X-ON Electronics

Largest Supplier of Electrical and Electronic Components

Click to view similar products for [Headers & Wire Housings](#) category:

Click to view products by [TE Connectivity](#) manufacturer:

Other Similar products are found below :

[892-18-020-10-001101](#) [58102-G61-06LF](#) [582553-1](#) [0009485154](#) [009176003701906](#) [0050291907](#) [LY20-4P-DT1-P1E-BR](#) [02.125.8002.8](#)
[609-3404](#) [61062-3](#) [61082-181009](#) [622-3653LF](#) [63453-116](#) [636-1030](#) [636-1427](#) [636-3427](#) [636-4007](#) [641938-9](#) [641991-4](#) [644827-2](#) [65817-010LF](#) [65817-015LF](#) [65863-015LF](#) [66207-023LF](#) [67095-007LF](#) [67601157](#) [68645-018](#) [68648-049](#) [70.362.1628.0](#) [70-4210](#) [70-4226B](#) [70-4853B](#) [707-5020](#) [707-5028](#) [71.350.2428.0](#) [71918-208LF](#) [71961-016LF](#) [733-134](#) [733-162](#) [754199-000](#) [760-3052](#) [787-8014-00](#) [79531-3000](#)
[FCN-360C032-B](#) [FCN-367T-T012/H](#) [FCN-723D010/2](#) [80.063.4001.1](#) [800-90-001-10-001000](#) [800-90-010-10-002000](#) [801-43-002-10-013000](#)