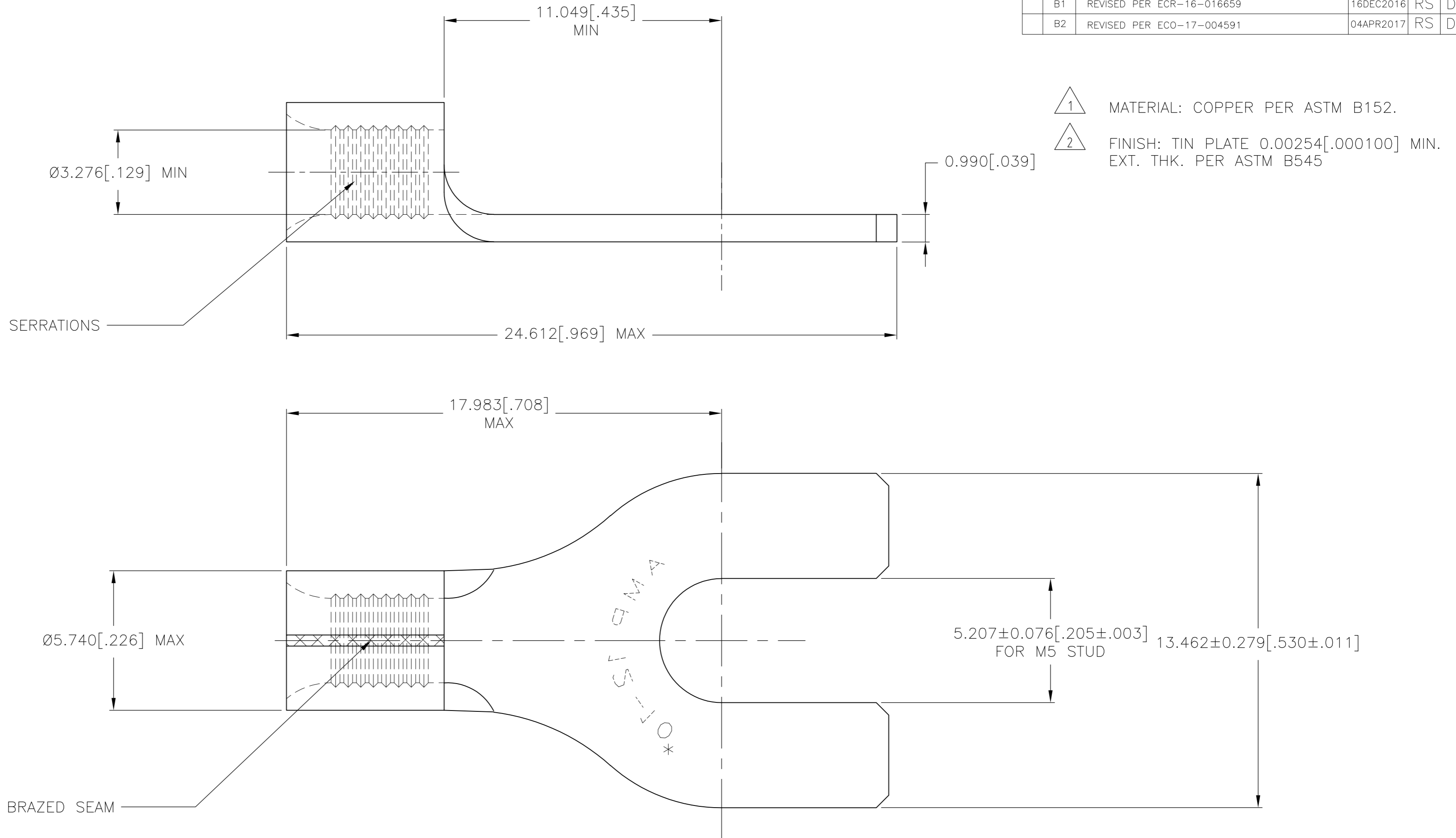


THIS DRAWING IS UNPUBLISHED. RELEASED FOR PUBLICATION  
 © COPYRIGHT - - ALL RIGHTS RESERVED.

| REVISIONS |     |                           |           |     |      |
|-----------|-----|---------------------------|-----------|-----|------|
| P         | LTR | DESCRIPTION               | DATE      | DWN | APVD |
|           | B   | REVISE                    | 09/96     | -   | -    |
|           | B1  | REVISED PER ECR-16-016659 | 16DEC2016 | RS  | DR   |
|           | B2  | REVISED PER ECO-17-004591 | 04APR2017 | RS  | DR   |



|  |  |   |
|--|--|---|
| <b>AMP INCORPORATED<br/>CUSTOMER SERVICE SYSTEMS</b>                             |  | MAX RECOMMENDED OPERATING TEMPERATURE:<br>170° C MAX [338° F]   |
| FOR ADDITIONAL PRODUCT INFORMATION OR COPIES OF DRAWINGS AND TECHNICAL DOCUMENTS | PRODUCT INFORMATION CENTER<br>1-800-522-6752 | VOLTAGE RATING:<br>N/A  |
| FOR APPLICATION TOOLING INFORMATION  | TOOLING ASSISTANCE CENTER<br>1-800-722-1111  | CIRCULAR MILL AREA:<br>2.62-6.60mm <sup>2</sup> [5.180-15.100]<br>SOLID OR STRANDED   |
| FOR ORDER ENTRY  | 1-800-526-5142                               | THIS DRAWING IS A CONTROLLED DOCUMENT FOR AMP INCORPORATED. IT IS SUBJECT TO CHANGE AND THE CONTROLLING ENGINEERING ORGANIZATION SHOULD BE CONTACTED FOR THE LATEST REVISION. |

|     |              |             |
|-----|--------------|-------------|
| 500 | LOOSE PIECE  | 130619      |
| QTY | PACKAGE TYPE | PART NUMBER |

|  |             |                                  |   |                    |                        |
|--|-------------|----------------------------------|---|--------------------|------------------------|
| THIS DRAWING IS A CONTROLLED DOCUMENT.   |             | DWN<br>G.ROBERT<br>DEC.02.88     | <b>TE</b> TE Connectivity                                 |                    |                        |
| DIMENSIONS:<br>mm [INCHES]   |             | CHK<br>JJ.DESPRETZ<br>10-FEB-97  |   |                    |                        |
| TOLERANCES UNLESS OTHERWISE SPECIFIED:<br>REMOVE BURRS, BREAK SHARP EDGES .015 R MAX   |             | APVD<br>JJ.REVIL<br>10-FEB-97    | NAME<br>SOLISTRAND, TERMINAL, SPADE<br>12-10 AWG, M5 STUD |                    |                        |
| 0 PLC ± -<br>1 PLC ± -<br>2 PLC ± -<br>3 PLC ± 0.127[.005]<br>4 PLC ± -<br>ANGLES ± 5° |             | PRODUCT SPEC<br>APPLICATION SPEC | SIZE<br>A2  | CAGE CODE<br>00779 | DRAWING NO<br>C=130619 |
| MATERIAL<br>1  | FINISH<br>2 | WEIGHT<br>-                      | SCALE<br>3  | SHEET<br>1 OF 1    | RESTRICTED TO<br>-     |
| CUSTOMER DRAWING   |             |                                  | REV<br>B2   |                    |                        |

## X-ON Electronics

Largest Supplier of Electrical and Electronic Components

*Click to view similar products for [Terminals](#) category:*

*Click to view products by [TE Connectivity](#) manufacturer:*

Other Similar products are found below :

[00-054007-01074-6](#) [00-054007-70206-1](#) [00-054007-70210-8](#) [00-054007-70217-7](#) [00-054007-70226-9](#) [00-054007-70228-3](#) [00-054007-70248-1](#) [00-054007-70256-6](#) [00-054007-70301-3](#) [00-054007-70316-7](#) [00-054007-49560-4](#) [00-054007-70209-2](#) [00-054007-70225-2](#) [00-054007-70227-6](#) [00-054007-70231-3](#) [00-054007-70241-2](#) [00-054007-70242-9](#) [00-054007-70244-3](#) [00-054007-70246-7](#) [00-054007-70263-4](#) [00-054007-70288-7](#) [00-054007-70290-0](#) [00-054007-70300-6](#) [00-054007-70304-4](#) [01-2065-1-0216](#) [01-2900-1-04412](#) [00581P0075](#) [600TS-10](#) [60205-1](#) [604200-1](#) [605601-1](#) [60598-1-CUT-TAPE](#) [61314-6-C](#) [61810-3](#) [61-S](#) [61-SN](#) [626-0194](#) [62-NBM-A](#) [62-SN](#) [62-SP](#) [63-S](#) [640179-1](#) [M55155/059I03](#) [M55155/079C01](#) [M55155/099H02](#) [M55155/109H01](#) [M55155/109H02](#) [M55155/12XH05](#) [M55155/16XH02](#) [M55155/29-5S](#)