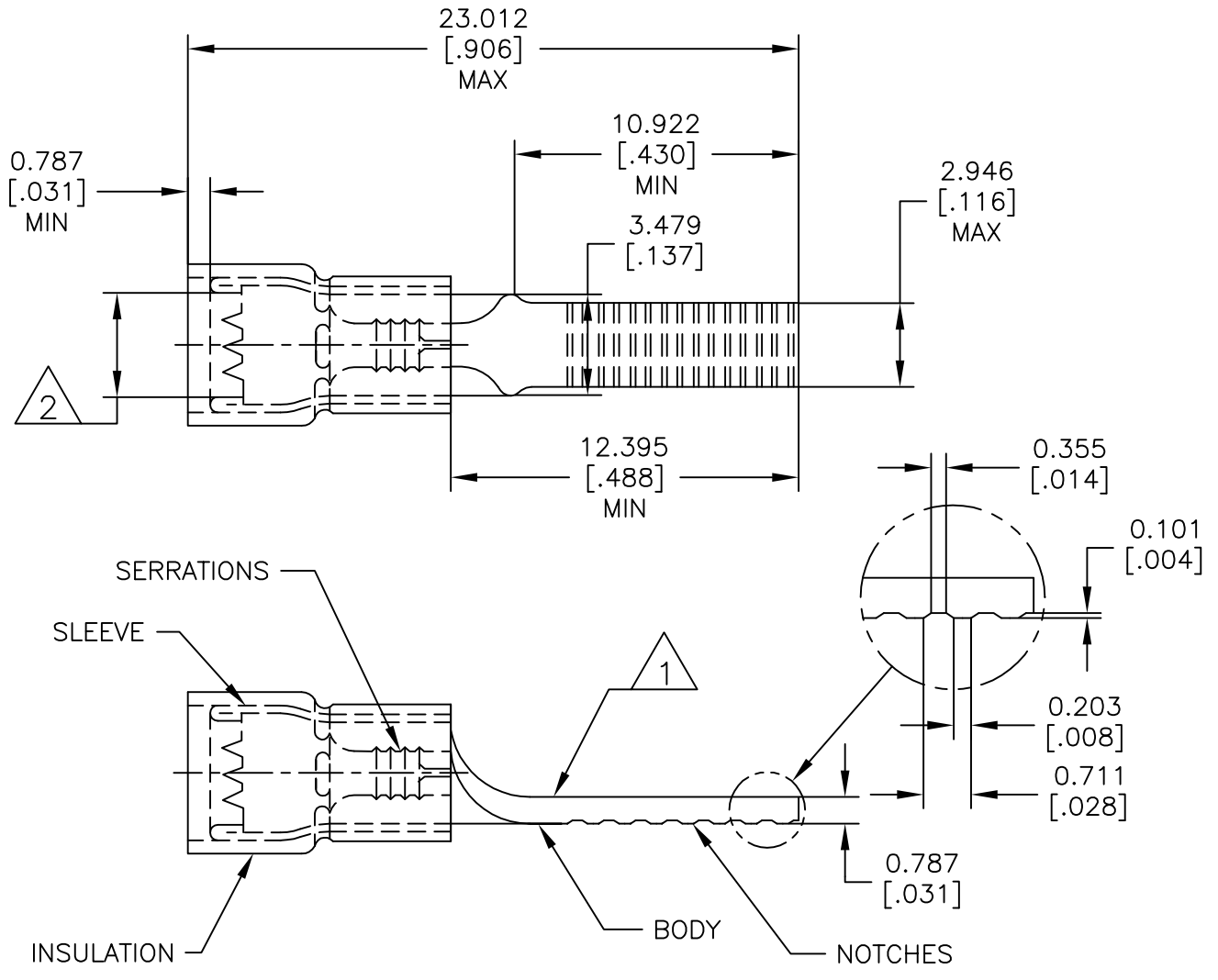


REVISIONS					
P	LTR	DESCRIPTION	DATE	DWN	APVD
	D1	REDRAWN/REV PER ECO-17-008809	20JUN2017	RS	DR



- 1 STAMP AMP 22-16 APPROX AS SHOWN.
- 2 WIRE INSULATION  $\phi 2.692-3.581[\phi .106-.141]$
- 3 BODY MATERIAL THICKNESS  $0.787 \pm 0.050[.031 \pm .002]$
- 4 MATERIAL : COPPER PER ASTM B152.
- 5 FINISH : TIN PLATED PER ASTM B545 MIN EXT.THK.  $0.00254[.000100]$ .

1000	LOOSE PIECE	131331
QTY	PACKAGE TYPE	PART NO

THIS DRAWING IS UNPUBLISHED. ALL RIGHTS RESERVED. © COPYRIGHT - TE Connectivity

DIMENSIONS: mm [INCHES]	DWN RAVI S	20JUN2017	MATERIAL	4	FINISH	5
	CHK ROHDE DANIEL	20JUN2017	TE Connectivity			
TOLERANCES UNLESS OTHERWISE SPECIFIED: REMOVE BURRS, BREAK SHARP EDGES $\frac{1}{4}$ R MAX	APVD ROHDE DANIEL	20JUN2017				
	PRODUCT SPEC		WIRE TAB PIDG			
0 PLC ± -	APPLICATION SPEC		22-16 AWG			
1 PLC ± -	114-2157		SIZE	CAGE CODE	DRAWING NO	RESTRICTED TO
2 PLC ± -	WEIGHT		A4	00779	131331	-
3 PLC ± 0.127[.005]	CUSTOMER DRAWING		SCALE		6:1	SHEET
4 PLC ± -			SHEET		1 OF 1	REV
ANGLES ± 5°			REV		D1	

## X-ON Electronics

Largest Supplier of Electrical and Electronic Components

*Click to view similar products for [Terminals](#) category:*

*Click to view products by [TE Connectivity](#) manufacturer:*

Other Similar products are found below :

[00-054007-01074-6](#) [00-054007-70206-1](#) [00-054007-70210-8](#) [00-054007-70217-7](#) [00-054007-70226-9](#) [00-054007-70228-3](#) [00-054007-70248-1](#) [00-054007-70256-6](#) [00-054007-70301-3](#) [00-054007-70316-7](#) [00-054007-49560-4](#) [00-054007-70209-2](#) [00-054007-70225-2](#) [00-054007-70227-6](#) [00-054007-70231-3](#) [00-054007-70241-2](#) [00-054007-70242-9](#) [00-054007-70244-3](#) [00-054007-70246-7](#) [00-054007-70263-4](#) [00-054007-70288-7](#) [00-054007-70290-0](#) [00-054007-70300-6](#) [00-054007-70304-4](#) [01-2065-1-0216](#) [01-2900-1-04412](#) [00581P0075](#) [600TS-10](#) [60205-1](#) [604200-1](#) [605601-1](#) [60598-1-CUT-TAPE](#) [61314-6-C](#) [61810-3](#) [61-S](#) [61-SN](#) [626-0194](#) [62-NBM-A](#) [62-SN](#) [62-SP](#) [63-S](#) [640179-1](#) [M55155/059I03](#) [M55155/079C01](#) [M55155/099H02](#) [M55155/109H01](#) [M55155/109H02](#) [M55155/12XH05](#) [M55155/16XH02](#) [M55155/29-5S](#)