

THIS DRAWING IS UNPUBLISHED. RELEASED FOR PUBLICATION  
 © COPYRIGHT 19 ALL RIGHTS RESERVED.

LOC	DIST	REVISIONS						
		P	LTR	DESCRIPTION	DATE	DWN	APVD	
J			B2	REVISED	ECR-11-011495	02JUN11	TS	KB

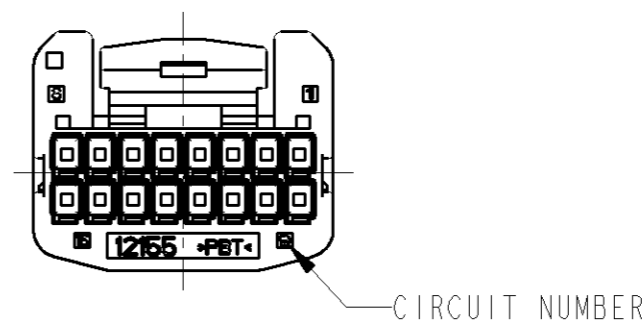
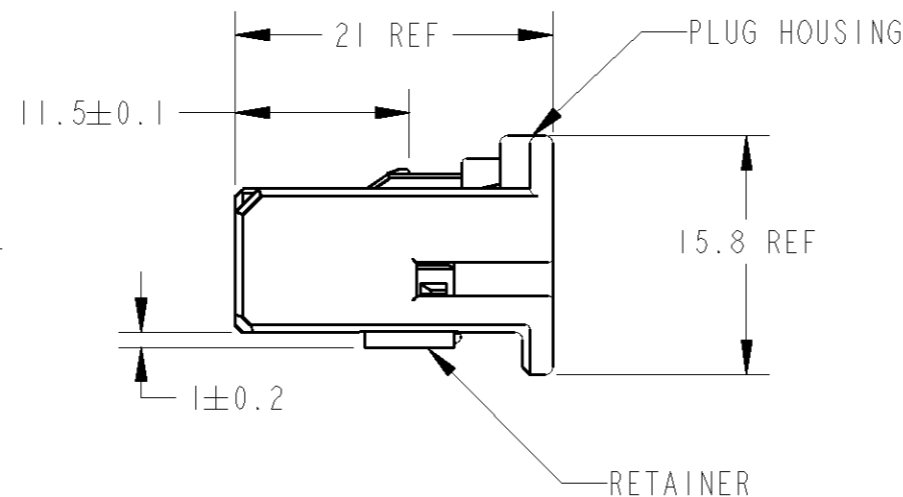
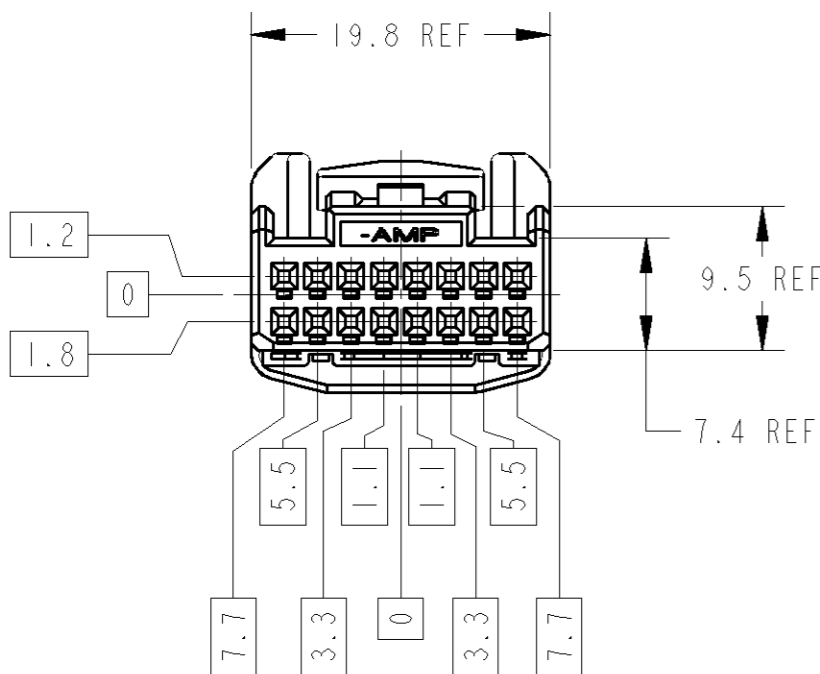
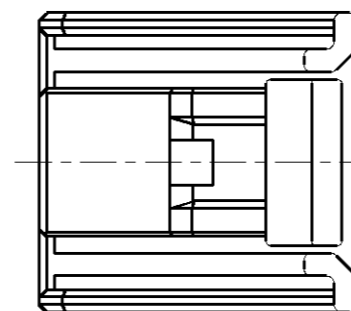


TABLE-1

POS 極数	CAP ASSEMBLY PART NO キャップ 型番
16	1318382

TABLE-2

SIGNAL		TERMINAL NO 端子型番	APPLICABLE WIRE RANGE 適用電線
025	TIN	1123343-1	AVSS/CAVUS/AVSSH-f 0.3~0.5mm <sup>2</sup> CAVS 0.22~0.5mm <sup>2</sup>

PAPER BOX ダンボール	PLASTIC BAG ビニール袋	COLOR	PART NUMBER
OUTER 外装	TINNER 内装	BLACK	1318386-2
		NATURAL	1318386-1

1. RETAINER SHOULD BE SET TO THE PRE- ASSEMBLY POSITION WITHIN THE PLUG HOUSING WHEN SHIPPED TO THE CUSTOMER
  2. THE RETENTION LATCH OF THE RETAINER MUST BE OUT SIDE OF PLUG HOUSING WHEN PRE-ASSEMBLY
  3. RETAINER RETENTION FORCE FROM HOUSING : 20N MIN
  4. INSTRUCTION SHEET NO : 411-5928
  5. PART NUMBER OF CAP HOUSING TO BE MATED : SEE TABLE -1
  6. APPLIED TERMINAL : SEE TABLE -2
- △ RETAINER IS THE SAME COLOR AS HOUSING.

1. プラグハウジングにリテーナーを仮止して出荷する
  2. 仮止時リテーナー突起がハウジングの外側に出ていること
  3. リテーナーの仮止保持力は 20N 以上
  4. 取扱い説明書 NO : 411-5928
  5. 嵌合相手型番は TABLE -1参照
  6. 適用端子は TABLE -2参照
- △ リテーナーはハウジング本体と同色とする。

THIS DRAWING IS A CONTROLLED DOCUMENT.		DWN Y. NOGUCHI	10MAR00	<b>TE</b> TE Connectivity	
DIMENSIONS: 単位: 概 mm		CHK N. SAI	10MAR00		
TOLERANCES UNLESS OTHERWISE SPECIFIED: 一般公差 = ± 0.3		APVD N. SAI	10MAR00	NAME 名称 025 SERIES 16 POSITION PLUG HOUSING ASSEMBLY	
0 PLC ± 1 PLC ±0.5 2 PLC ±0.13 3 PLC ±0.013 4 PLC ±0.000J ANGLES ±3'00"		PRODUCT SPEC 製品規格 108-5668		DRAWING NO 番号 C=1318386	
MATERIAL 材料 PBT		FINISH 仕上 NATURAL		APPLICATION SPEC 取付適用規格 114-5250	
		WEIGHT 2.78 g		SIZE A3	CAGE CODE 00779
		CUSTOMER DRAWING		SCALE 尺度 5:1	SHEET 1 OF 1
				RESTRICTED TO REV B2	

## X-ON Electronics

Largest Supplier of Electrical and Electronic Components

*Click to view similar products for [Automotive Connectors](#) category:*

*Click to view products by [TE Connectivity](#) manufacturer:*

Other Similar products are found below :

[003-018-000](#) [60403001](#) [60993906-B](#) [M902-2131](#) [M902-2161](#) [M902-2344](#) [72.330.1035.1](#) [73.353.4028.0](#) [F119300-B](#) [F166900](#) [F258300-B](#)  
[F358300-B](#) [F407400](#) [F444110](#) [F487000](#) [F509500B-B](#) [827153-1](#) [8N1515-32-24P](#) [9-1326729-8](#) [925474-1](#) [928905-1](#) [964562-4](#) [968782-1](#)  
[GT17SA-8DS-HU](#) [98891-1012](#) [98947-1016](#) [12004147](#) [12004475-L](#) [12010290](#) [12010309-B](#) [12015454](#) [12020219-B](#) [12041318-B](#) [12052225-](#)  
[L](#) [12052466](#) [12064869](#) [12004327-B](#) [12015308](#) [12015384](#) [12015909](#) [1-21030-1](#) [12041254](#) [12041318](#) [12047946-B](#) [12047957](#) [12047957-L](#)  
[12059473](#) [12066261](#) [12110546](#) [12110546-B](#)