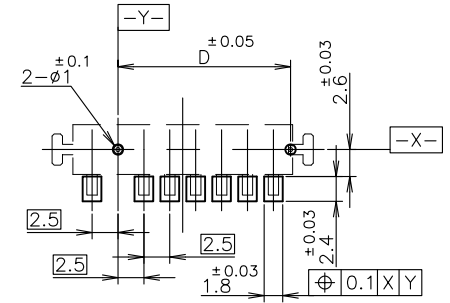
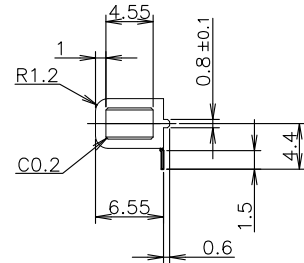
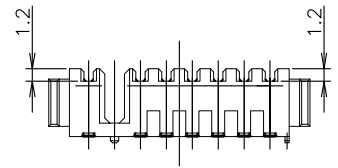
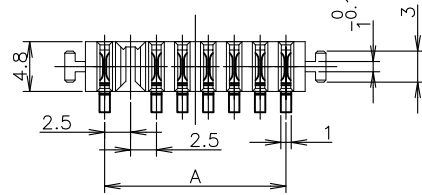
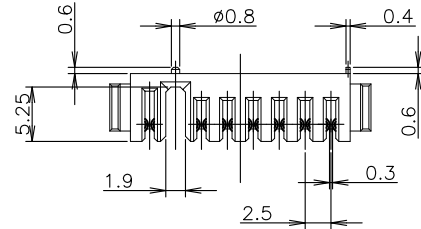
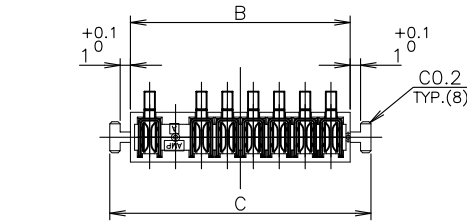


THIS DRAWING IS UNPUBLISHED. RELEASED FOR PUBLICATION MAY 1999. ALL RIGHTS RESERVED.

© COPYRIGHT 1999 BY TYCO ELECTRONICS CORPORATION.

LOC	DIST	REVISIONS			
P	LTR	DESCRIPTION	DATE	DWN	APVD
ES		B1	REVISED ECR-08-009526	15MAR2008	A.S S.Y



REFERENCE P.C. BOARD LAYOUT
P.C. BOARD THK 0.8~1.2
(VIEW FROM CONNECTOR MOUNTING SIDE)

- △ MATERIAL HOUSING : THERMOPLASTIC RESIN , UL94V-0
COLOR ; BLACK
CONTACT : COPPER ALLOY
- △ FINISH CONTACT : Ni ALL OVER UNDER PLATING
Pd-Ni PLATING AT CONTACT AREA
Au FLASH PLATING AT CONTACT AREA
TIN PLATING AT LEAD AREA

3. CONNECTOR TO BE MATED : 1318573-4

24.15	32.7	28.7	25	10	
21.65	30.2	26.2	22.5	9	
19.15	27.7	23.7	20	8	
16.65	25.2	21.2	17.5	7	1318574-4
14.15	22.7	18.7	15	6	
11.65	20.2	16.2	12.5	5	
9.15	17.7	13.7	10	4	
D	C	B	A	N (POS)	P/N

GENERAL TOLERANCE
10 ≥ : ±0.2
30 ≥ > 10 : ±0.25
100 ≥ > 30 : ±0.3
ANGLES : ±3°

THIS DRAWING IS A CONTROLLED DOCUMENT.		DWN T.KUSUHARA 17MAY99	Tyco Electronics Corporation Shanghai P.R.CHINA	
DIMENSIONS: mm		CHK T.YAMADA 17MAY99	NAME	
TOLERANCES UNLESS OTHERWISE SPECIFIED:		APVD T.YAMADA 17MAY99	RECEPTACLE ASSEMBLY 2.5mm PITCH BATTERY CONNECTOR REVERSE SEQUENTIAL PIN	
0 PLC ± - 1 PLC ± - 2 PLC ± - 3 PLC ± - 4 PLC ± - ANGLES ± -		PRODUCT SPEC 108-5599	SIZE A3	CAGE CODE 00779
MATERIAL		APPLICATION SPEC	DRAWING NO G=1318574	RESTRICTED TO
FINISH		WEIGHT	SCALE 2:1	SHEET 1 OF 1
CUSTOMER DRAWING		REV B1		

X-ON Electronics

Largest Supplier of Electrical and Electronic Components

Click to view similar products for [Power to the Board](#) category:

Click to view products by [TE Connectivity](#) manufacturer:

Other Similar products are found below :

[6450171-4](#) [6450552-7](#) [6600323-8](#) [6643429-1](#) [6646040-2](#) [6651939-1](#) [6766604-1](#) [120959-1](#) [1393557-2](#) [1393532-2](#) [1393532-3](#) [1393532-4](#)
[1393557-1](#) [1600812-5](#) [1-6450861-2](#) [1744132-7](#) [1761122-1](#) [1766250-1](#) [1892109-1](#) [2-6450860-5](#) [2-6450870-0](#) [1-6450161-4](#) [1-6450850-6](#) [1-](#)
[6450869-6](#) [1645526-2](#) [1-6600130-0](#) [2005243-2](#) [377-0020-11130](#) [TE34-12-16P-F0](#) [51700-10201602AALF](#) [5-6450830-6](#) [5646956-4](#) [377-](#)
[0080-11131A](#) [4-6450830-9](#) [4-6600333-3](#) [10125416-4050LF](#) [10130248-005LF](#) [6600320-3](#) [3-6450860-5](#) [1888123-2](#) [6450166-1](#) [6643978-1](#)
[6766605-1](#) [701-15-02109](#) [N11444](#) [6651938-1](#) [6450810-7](#) [46437-1112](#) [1-1589677-8](#) [5646956-5](#)