

4

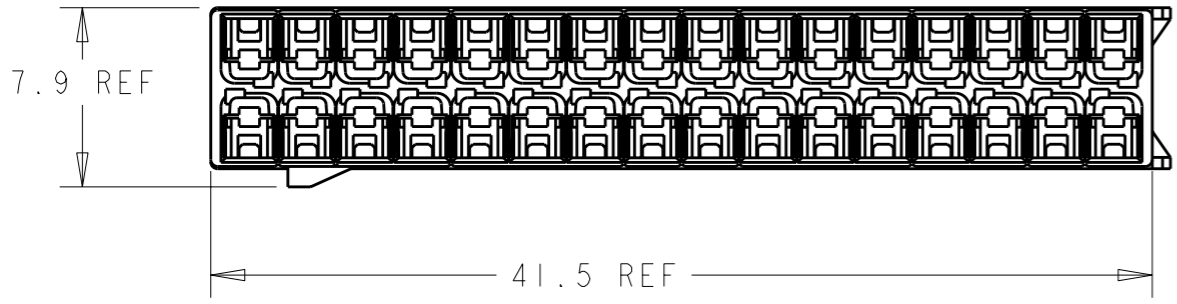
3

2

1

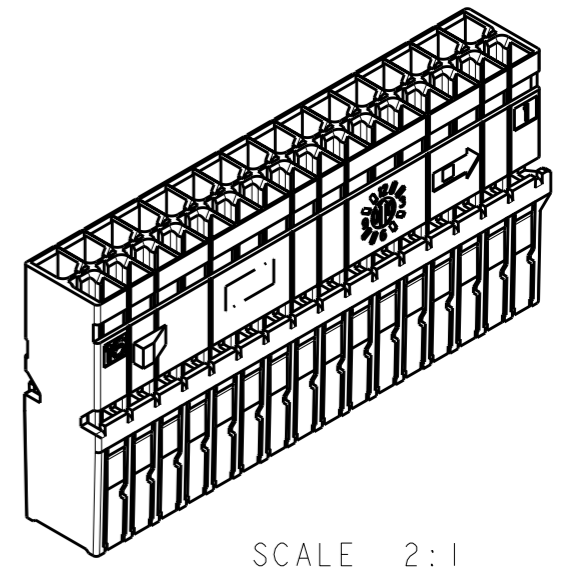
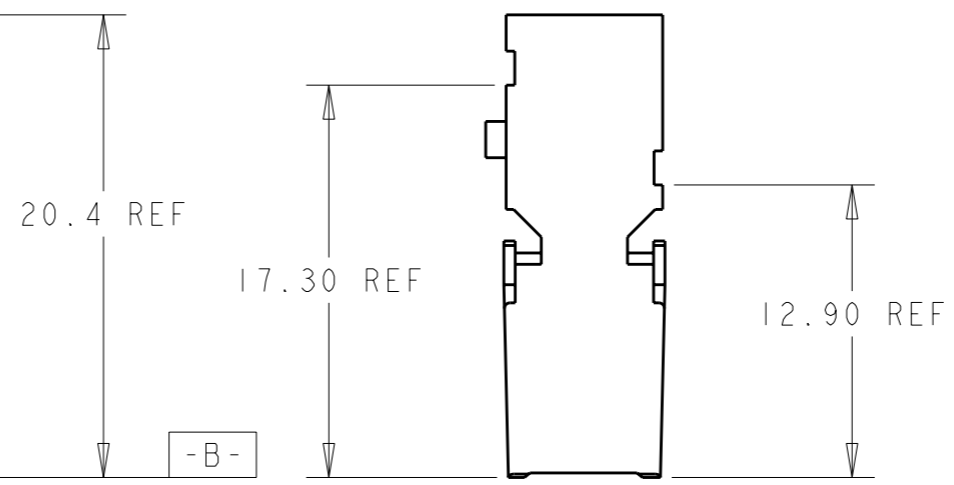
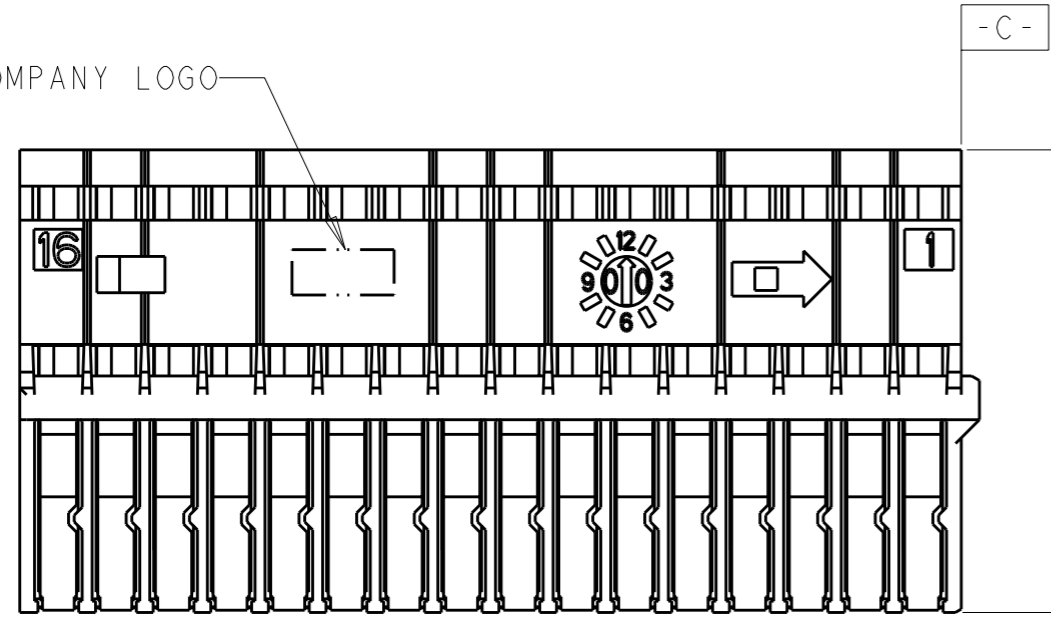
THIS DRAWING IS UNPUBLISHED. RELEASED FOR PUBLICATION  
 © COPYRIGHT 19 BY TYCO ELECTRONICS CORPORATION. ALL RIGHTS RESERVED.

LOC	DIST	REVISIONS				
P	LTR	DESCRIPTION	DATE	DWN	APVD	
FX	00					
	0	RELEASED PER EC# OK80-0283-02	06JAN2003	SPT	AME	
	A	REV PER EC OK80-0461-04	17DEC2004	RDW	AME	
	AI	REV PER ECR-10-011823	28MAY2010	VSS	CS	



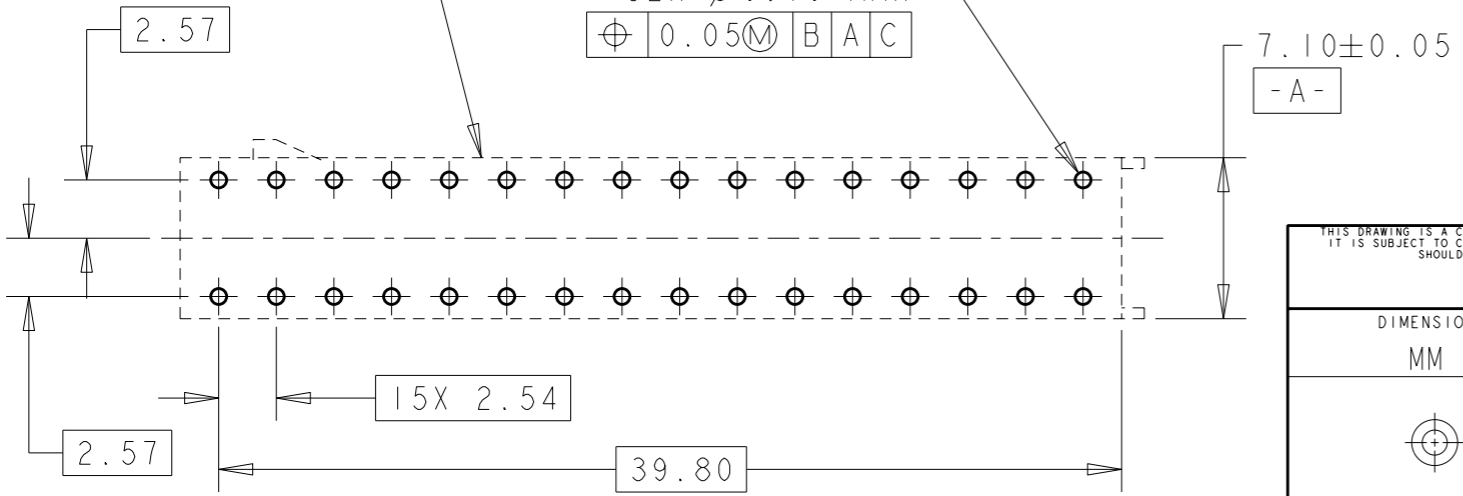
- 1 MATERIAL: GLASS FILLED NYLON.
- 2. RECEPTACLES SOLD SEPARATELY, SEE P/N 638551 (TIN) OR 1326028 (GOLD) FOR TERMINATION AND REELING OPTIONS.
- 3. REFER TO INSTRUCTION SHEET 408-8662 FOR PRODUCT ASSEMBLY AND DISASSEMBLY PROCEDURES.
- 4. REFER TO USCAR-2 REV 3 APRIL 2001 FOR PRODUCT SPECIFICATIONS.

COMPANY LOGO



CARRIER ENVELOPE

32X Ø0.70 MAX  
 ⊕ 0.05(M) B A C



PROBE PIN RECOMMENDED LAYOUT

THIS DRAWING IS A CONTROLLED DOCUMENT FOR TYCO ELECTRONICS CORPORATION  
 IT IS SUBJECT TO CHANGE AND THE CONTROLLING ENGINEERING ORGANIZATION  
 SHOULD BE CONTACTED FOR THE LATEST REVISION.

DIMENSIONS: MM		TOLERANCES UNLESS OTHERWISE SPECIFIED:	
		0 PLC	±-
		1 PLC	±0.1
		2 PLC	±0.05
		3 PLC	±-
		4 PLC	±-
		ANGLES	±-
MATERIAL	-	FINISH	-

DWN	W. HOELSCHER	07NOV01
CHK	S. TOBEY	07NOV01
APVD	S. TOBEY	07NOV01
PRODUCT SPEC	-	
APPLICATION SPEC	-	
WEIGHT	-	
CUSTOMER DRAWING		

BLACK	A	1326227-1
COLOR	KEY	PART NO.
AMP Incorporated Harrisburg, PA 17105-3608		
NAME RECEPTACLE HOUSING, 32 POSITION 0.64mm, LAC		
SIZE	CAGE CODE	DRAWING NO
A3	00779	1326227
RESTRICTED TO		-
SCALE	SHEET	OF
3:1	1	1
REV	AI	

## X-ON Electronics

Largest Supplier of Electrical and Electronic Components

*Click to view similar products for [Automotive Connectors](#) category:*

*Click to view products by [TE Connectivity](#) manufacturer:*

Other Similar products are found below :

[003-018-000](#) [60403001](#) [60993906-B](#) [M902-2131](#) [M902-2161](#) [M902-2344](#) [72.330.1035.1](#) [73.353.4028.0](#) [F119300-B](#) [F166900](#) [F258300-B](#)  
[F358300-B](#) [F407400](#) [F444110](#) [F487000](#) [F509500B-B](#) [827153-1](#) [8N1515-32-24P](#) [9-1326729-8](#) [925474-1](#) [928905-1](#) [964562-4](#) [968782-1](#)  
[GT17SA-8DS-HU](#) [98891-1012](#) [98947-1016](#) [12004147](#) [12004475-L](#) [12010290](#) [12010309-B](#) [12015454](#) [12020219-B](#) [12041318-B](#) [12052225-](#)  
[L](#) [12052466](#) [12064869](#) [12004327-B](#) [12015308](#) [12015384](#) [12015909](#) [1-21030-1](#) [12041254](#) [12041318](#) [12047946-B](#) [12047957](#) [12047957-L](#)  
[12059473](#) [12066261](#) [12110546](#) [12110546-B](#)