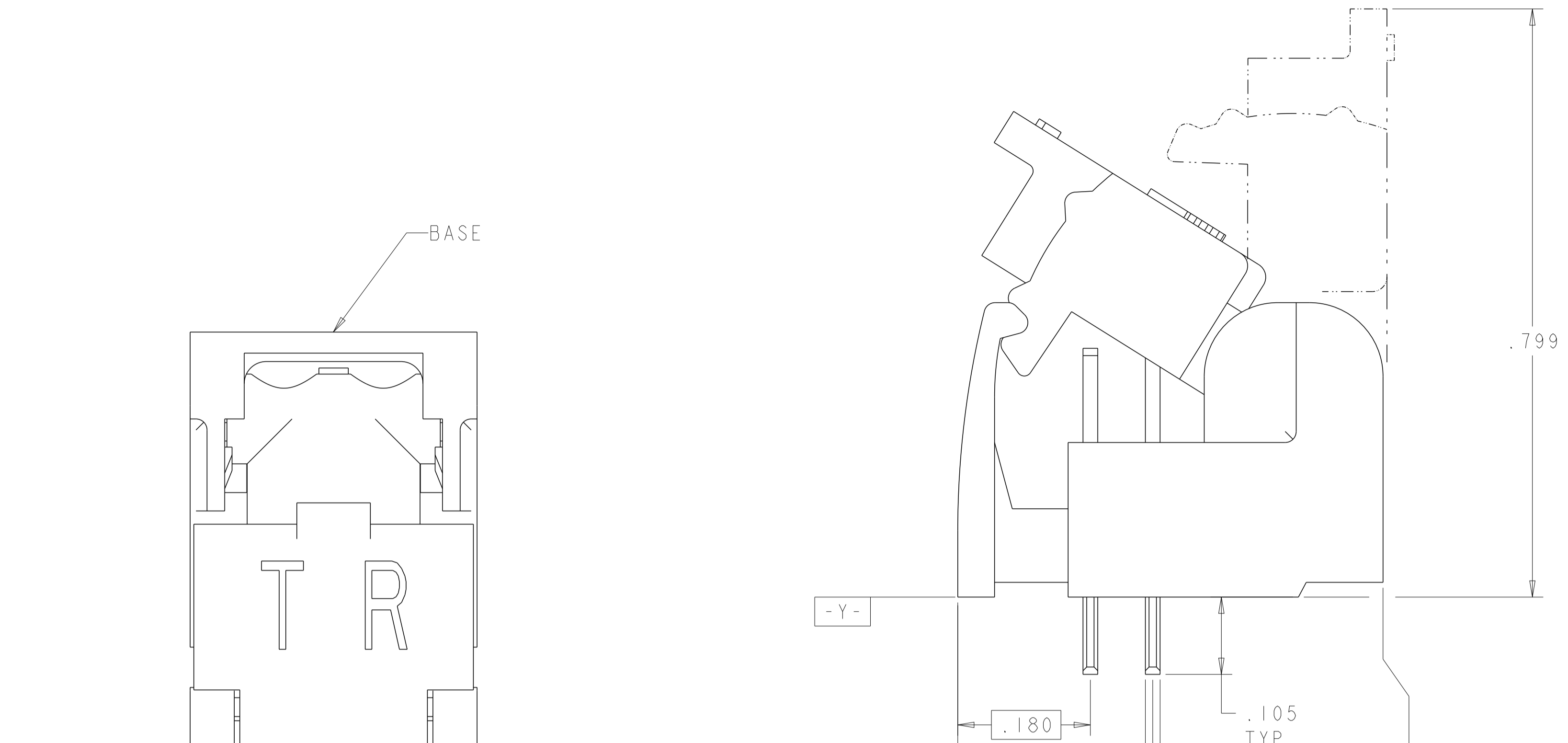
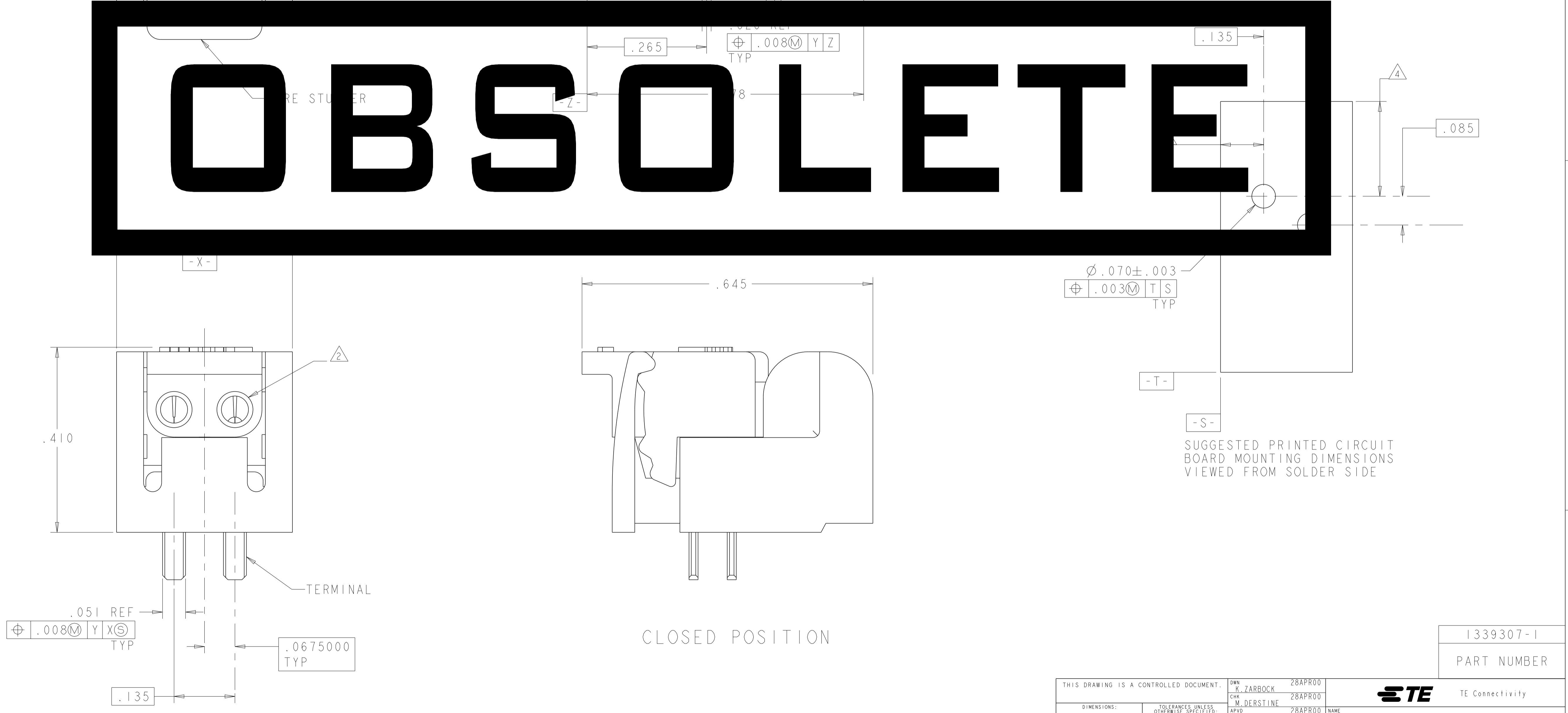


REVISIONS				
P	LTN	DESCRIPTION	DATE	APVD
D1		REVISED ECR-19-019743	02JUN2020	J. J. W. H.



- △ MATERIAL: BASE - POLYESTER MOLDING COMPOUND, BLACK.  
WIRE STUFFER: - POLYCARBONATE MOLDING COMPOUND, CLEAR.  
TERMINAL - COPPER ALLOY, PLATED WITH 3.81µm MINIMUM THICK TIN OVER 1.27µm MINIMUM THICK NICKEL UNDERPLATE.
- △ EACH WIRE ENTRY HOLE ACCEPTS ONE UNSTRIPPED SOLID COPPER 22-26 AWG WIRE WITH WIRE INSULATION DIAMETER RANGE FROM .060 THROUGH .040. OTHER WIRE SIZES AND TYPES SHALL BE SUBMITTED TO AMP ENGINEERS FOR APPLICATION APPROVAL.
- 3. SOLDER TABS PROVIDED FOR PERMANENT BOARD MOUNTING.
- △ LOCATION OF HOLE PATTERN DETERMINED BASED ON CUSTOMER REQUIREMENTS.

# OBSOLETE



1339307-1  
PART NUMBER

THIS DRAWING IS A CONTROLLED DOCUMENT.		DWN: R. ZARBOCK 28APROO	<b>TE</b> Connectivity
DIMENSIONS: INCHES		CHK: M. DERSTINE 28APROO	
TOLERANCES UNLESS OTHERWISE SPECIFIED:		APVD: M. DERSTINE 28APROO	NAME: ASSEMBLY, SINGLE PAIR, SINGLE ENTRY, PIVOT II CONNECTOR
0 PLC ±.01		PRODUCT SPEC	
1 PLC ±.01		APPLICATION SPEC	SIZE: CAGE CODE DRAWING NO
2 PLC ±.01		RESTRICTED TO	A   00779   C=1339307
3 PLC ±.005		WEIGHT	SCALE: 8:1 SHEET 1 OF 1 REV: D1
4 PLC ±.005		CUSTOMER DRAWING	
ANGLES ±.2°			
FINISH			

## X-ON Electronics

Largest Supplier of Electrical and Electronic Components

*Click to view similar products for [Headers & Wire Housings](#) category:*

*Click to view products by [TE Connectivity](#) manufacturer:*

Other Similar products are found below :

[892-18-020-10-001101](#) [58102-G61-06LF](#) [582553-1](#) [0009485154](#) [009176003701906](#) [0050291907](#) [LY20-4P-DT1-P1E-BR](#) [02.125.8002.8](#)  
[609-3404](#) [61062-3](#) [61082-181009](#) [622-3653LF](#) [63453-116](#) [636-1030](#) [636-1427](#) [636-3427](#) [636-4007](#) [641938-9](#) [641991-4](#) [644827-2](#) [65817-](#)  
[010LF](#) [65817-015LF](#) [65863-015LF](#) [66207-023LF](#) [67095-007LF](#) [67601157](#) [68645-018](#) [68648-049](#) [70.362.1628.0](#) [70-4210](#) [70-4226B](#) [70-](#)  
[4853B](#) [707-5020](#) [707-5028](#) [71.350.2428.0](#) [71918-208LF](#) [71961-016LF](#) [733-134](#) [733-162](#) [754199-000](#) [760-3052](#) [787-8014-00](#) [79531-3000](#)  
[FCN-360C032-B](#) [FCN-367T-T012/H](#) [FCN-723D010/2](#) [80.063.4001.1](#) [800-90-001-10-001000](#) [800-90-010-10-002000](#) [801-43-002-10-013000](#)