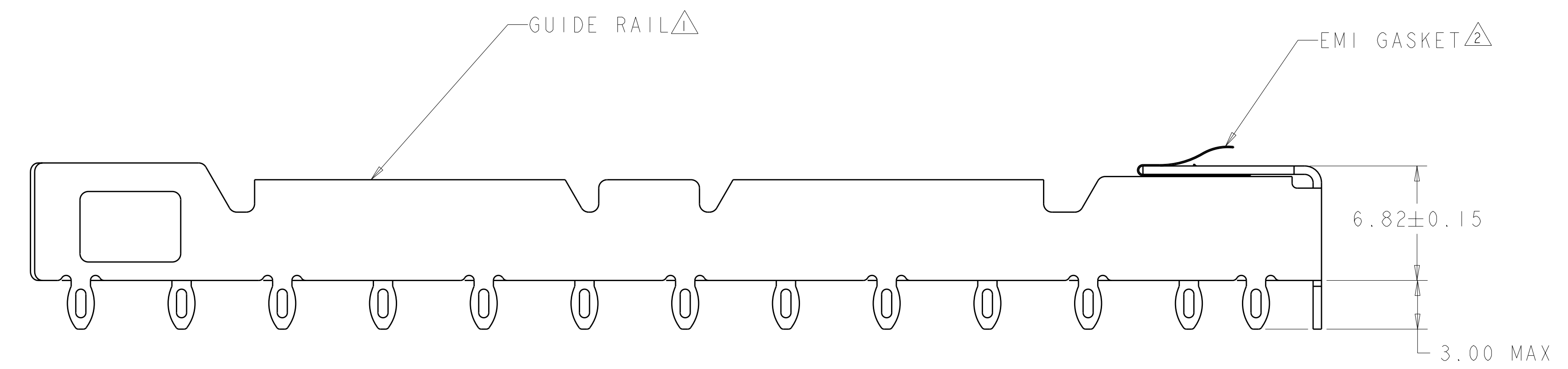
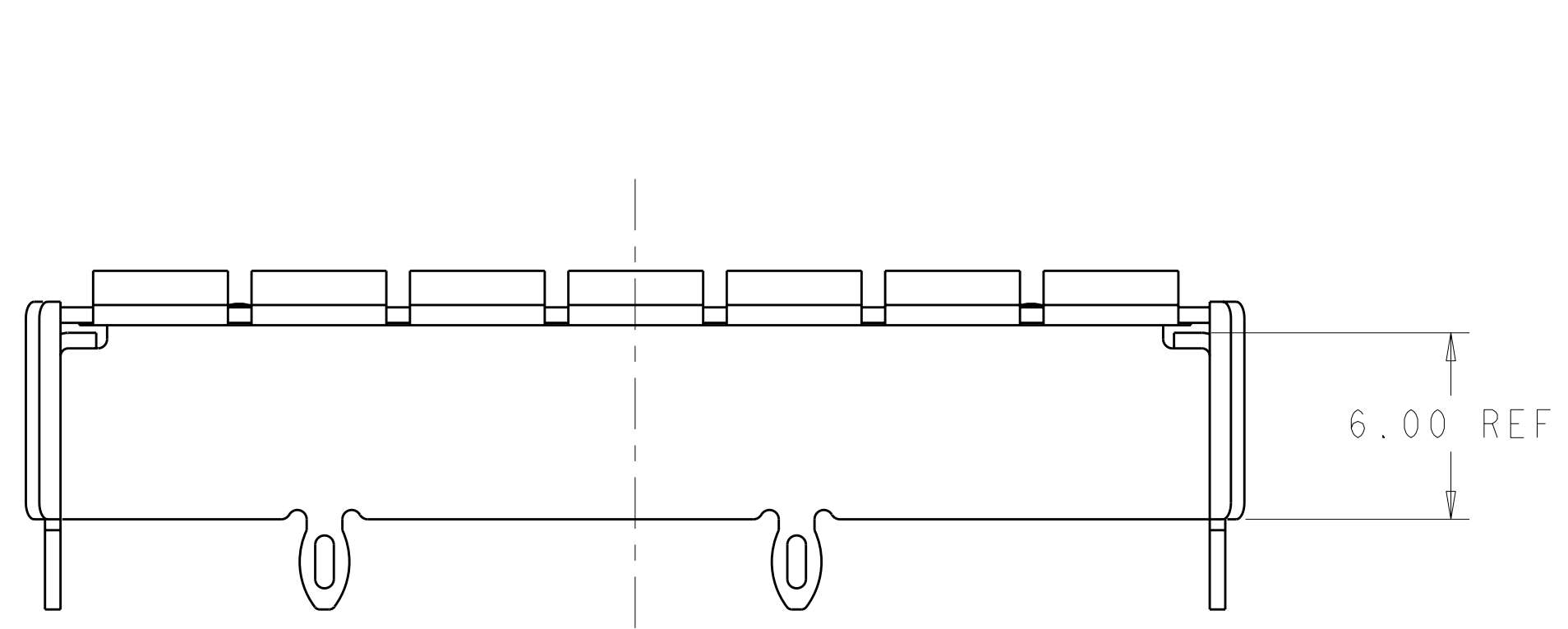
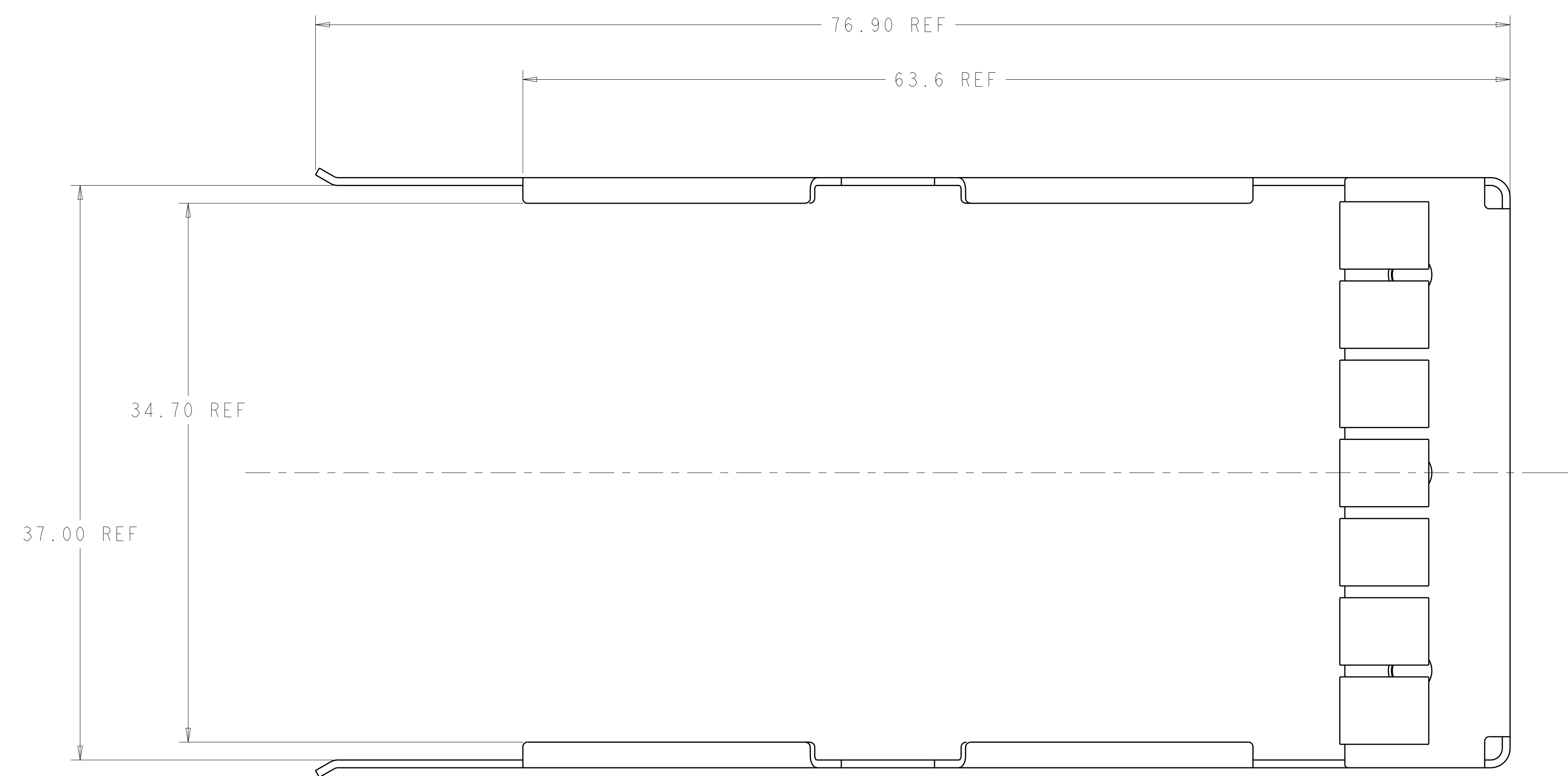


LOC	DIST	REV	DATE	BY	CHK	APPV
AG	00					

REV	DATE	DESCRIPTION	DATE	BY	CHK	APPV
5	11JUL2006	Ø 1.55±0.02 WAS Ø 1.45 ±0.02				
A	11APR07	RELEASED PER ECO-07-007698				

- △ GUIDE RAIL MATERIAL: COPPER ALLOY
 GUIDE RAIL FINISH: 0.4 MICROMETERS MIN THK TIN COATING
- △ EMI GASKET MATERIAL: COPPER ALLOY
 EMI GASKET PLATING: 2 MICROMETERS MIN THK TIN PLATE
- △ DATUMS X AND Y AND BSC DIMENSIONS TO BE ESTABLISHED BY CUSTOMER
- 4. DESIGN ACCEPTS MODULES THAT ARE COMPLIANT WITH X2 SPECIFICATION REV 2.0b
- △ SEE CUSTOMER DRAWING 1367337-1 FOR CONNECTOR PAD DIMENSIONS
- △ RECOMMENDATION FOR P.C. BOARD HOLES:
 COPPER UNDERPLATE, 25-50 MICROMETERS THICK, FOLLOWED BY ANY OF THESE SURFACE FINISHES:
 - A. HASL SnPb: 35 MICROMETERS MAX THK
 - B. GALVANIC Au: 4-5 MICROMETERS Ni + 0.1-0.5 MICROMETERS Au
 - C. OSP: 0.2-0.5 MICROMETERS THK
 - D. IMMERSION Sn: 0.5 MICROMETERS MIN THK
 - E. IMMERSION Au: 4-5 MICROMETERS Ni + 0.1-0.5 MICROMETERS Au
 - F. IMMERSION Ag: 0.1-0.3 MICROMETERS
- 7. BARE EDGES PERMITTED
- 8. 3.0 MIN PRINTED CIRCUIT BOARD THICKNESS FOR BELLY TO BELLY APPLICATION
- 9. BEZEL REQUIREMENTS PER X2 MSA
- 10. REFERENCE INSTRUCTION SHEET 408-8997 FOR ADDITIONAL INSTRUCTIONS.

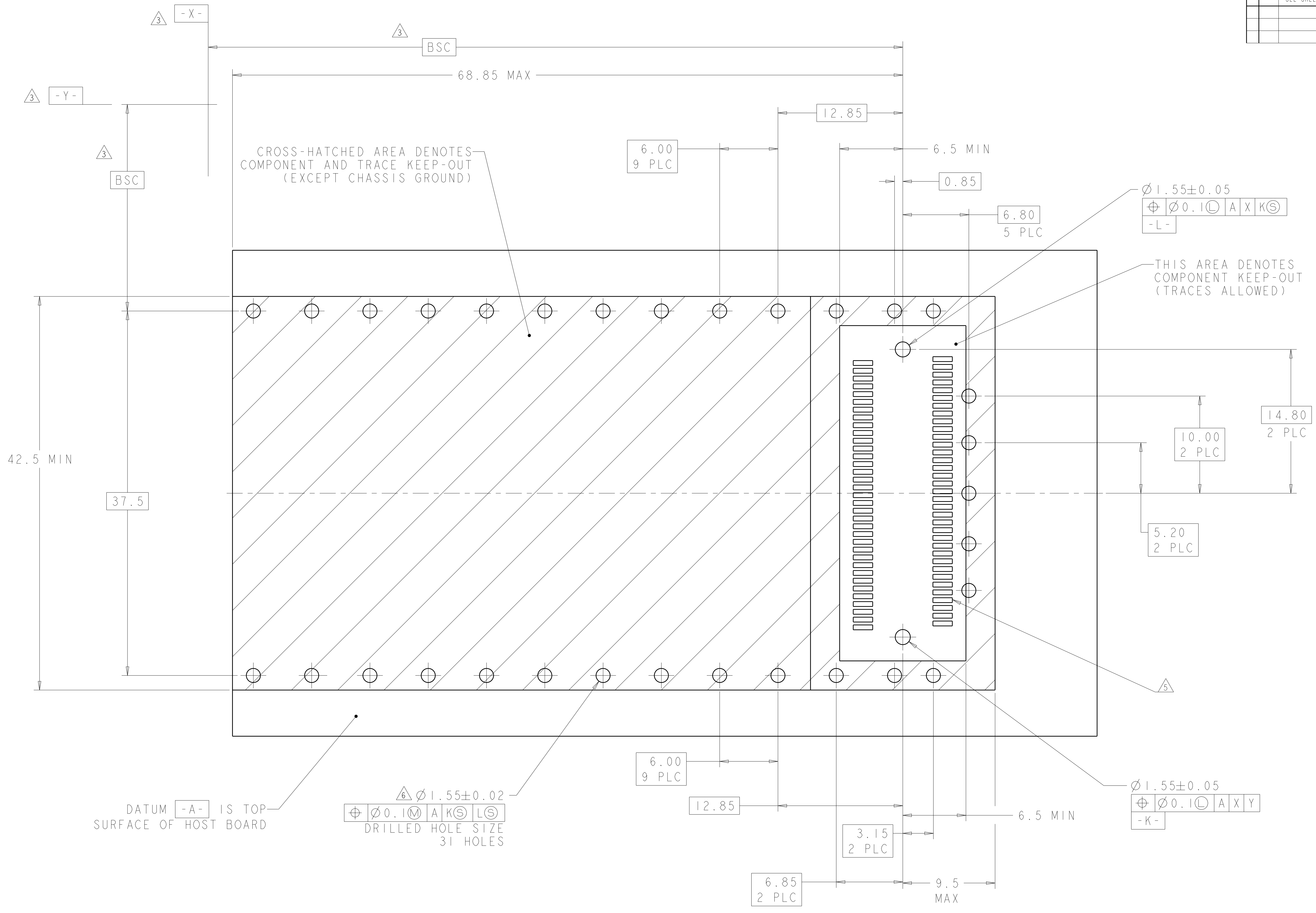


1367608-1
 PART NUMBER

DIMENSIONS: mm		TOLERANCES UNLESS OTHERWISE SPECIFIED: 0 PLC ±0.5 1 PLC ±0.2 2 PLC ±0.1 3 PLC ± 4 PLC ± ANGLES ±		DWN P. KERLIN 04MAR2004 CHK E. BRIGHT 04MAR2004 APVD -		Tyco Electronics Harrisburg, PA 17105-3608	
MATERIAL: △ 2		FINISH: △ 2		PRODUCT SPEC: - APPLICATION SPEC: -		NAME: RAIL ASSY, GUIDE, X2 BELLY TO BELLY SIZE: A 00779 C=1367608 SCALE: 5:1 SHEET 1 OF 3 REV A	
CUSTOMER DRAWING				RESTRICTED TO: -			

LOC	DIST	REV	DATE	BY	APPD
AG	00				

REVISIONS		DATE	BY	APPD
-	SEE SHEET 1	-	-	-

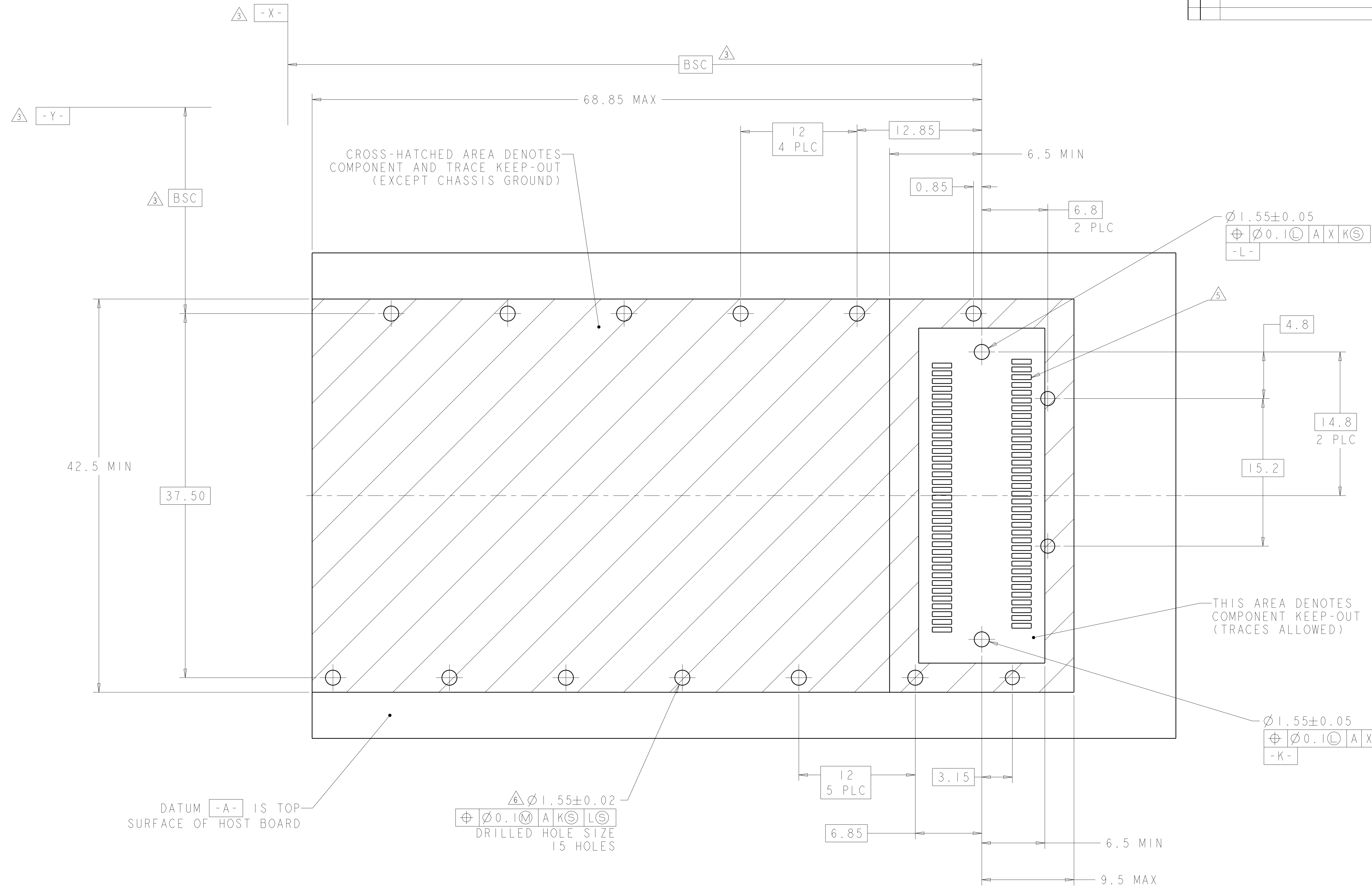


RECOMMENDED P.C. BOARD LAYOUT FOR BELLY TO BELLY X2

<small>THIS DRAWING IS UNPUBLISHED. RELEASED FOR PUBLICATION. COPYRIGHT 20 BY TYCO ELECTRONICS CORPORATION. ALL RIGHTS RESERVED.</small>		DWN: P. KERLIN 04MAR2004 CHK: E. BRIGHT 04MAR2004 APVD: -	tyco Electronics Tyco Electronics Harrisburg, PA 17105-3608
DIMENSIONS: mm 	TOLERANCES UNLESS OTHERWISE SPECIFIED: 9 PLC ±0.5 1 PLC ±0.2 2 PLC ±0.1 3 PLC ± 4 PLC ± ANGLES ±	PRODUCT SPEC APPLICATION SPEC WEIGHT CUSTOMER DRAWING	NAME: RAIL ASSY, GUIDE, X2 BELLY TO BELLY SIZE: A 00779 C=1367608 SCALE: 5:1 SHEET 2 OF 3 REV A

LOC	DIST	REV	DATE	BY	APPD
AG	00				

REVISIONS		DATE	BY	APPD
1	SEE SHEET 1			



DATUM **-A-** IS TOP SURFACE OF HOST BOARD

$\Delta 6 \varnothing 1.55 \pm 0.02$
 $\varnothing 0.1 \text{ (M) A X K (S) L (S)}$
 DRILLED HOLE SIZE
 15 HOLES

RECOMMENDED P.C. BOARD LAYOUT FOR SINGLE SIDE MOUNTED X2

<small>THIS DRAWING IS UNPUBLISHED. RELEASED FOR PUBLICATION BY TYCO ELECTRONICS CORPORATION. ALL RIGHTS RESERVED.</small>		DWN: P. KERLIN 04MAR2004 CHK: E. BRIGHT 04MAR2004 APVD: -	tyco Electronics Tyco Electronics Harrisburg, PA 17105-3608
DIMENSIONS: mm 	TOLERANCES UNLESS OTHERWISE SPECIFIED: 9 PLC ±0.5 1 PLC ±0.2 5 PLC ±0.1 4 PLC ± ANGLES ± FINISH -	PRODUCT SPEC - APPLICATION SPEC - WEIGHT - CUSTOMER DRAWING	NAME: RAIL ASSY, GUIDE, X2 BELLY TO BELLY SIZE: A 00779 C=1367608 SCALE: 5:1 SHEET 3 OF 3 REV A

X-ON Electronics

Largest Supplier of Electrical and Electronic Components

Click to view similar products for [I/O Connectors](#) category:

Click to view products by [TE Connectivity](#) manufacturer:

Other Similar products are found below :

[571763P](#) [58098-0628](#) [72.250.1628.2](#) [72.250.2428.2](#) [74720-0505](#) [76.350.0729.0](#) [76871-1403](#) [FCN-244F080-G/1](#) [FCN-260A9920](#) [PCR-E36PM](#) [PCS-XE26MA+](#) [G38A71314B](#) [1571250010](#) [157-22500-3](#) [MS3471L14-19P L/C](#) [172501-4002](#) [172501-6002](#) [FCN-260C008-A/L0](#) [FCN-260C024-AL0](#) [FCN-261Z008](#) [2000314-1](#) [200331-1](#) [PCR-E36FC+](#) [PCS-E28FS+](#) [PCS-XE26SLFD+](#) [PCS-XE26SLFDT+](#) [G730VID08BDC24](#) [U90B2054081210](#) [38113800006](#) [DP3AR020WQ1R200](#) [Z4.102.0680.0](#) [500-1040](#) [500-1052](#) [500-1054](#) [ZP-4008-66L](#) [0709821002](#) [DX40-20P\(55\)](#) [5554841-1](#) [MS3474W18-8P-LC*](#) [U90B3054061110](#) [U65-E04-4020](#) [ZPF000000000097891](#) [747360449](#) [10099439-003C-TRLF](#) [10137239-0021LF](#) [E9320-001-01](#) [10137239-0011LF](#) [70289-001LF](#) [70.060.1028.0](#) [109029-ZZ](#)