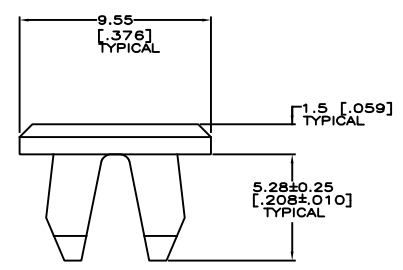
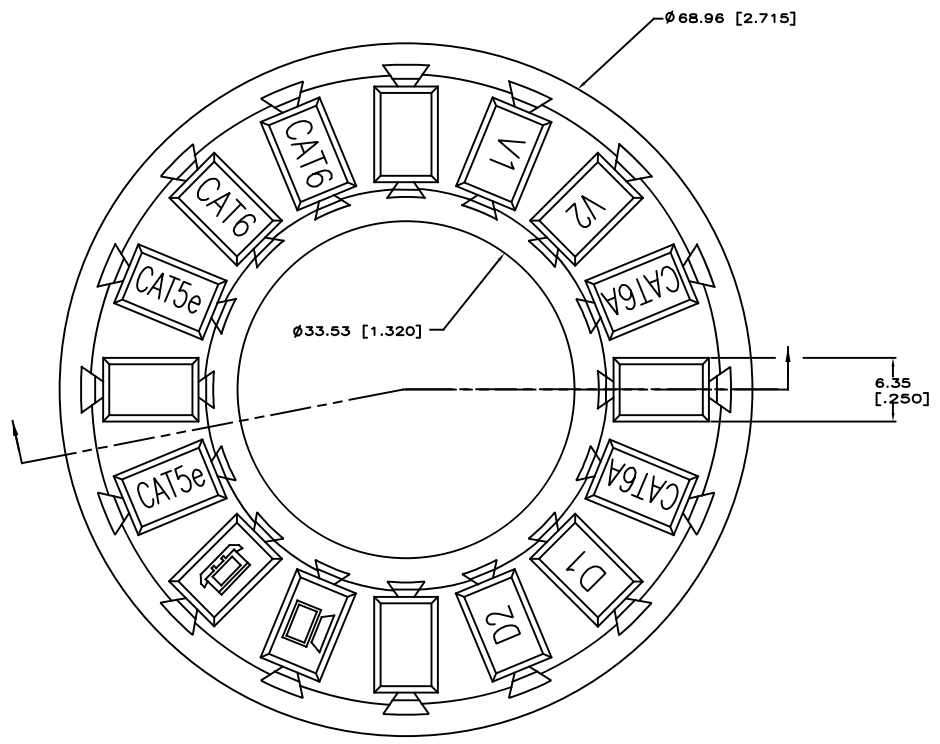


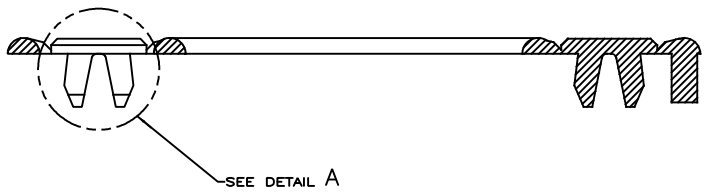
THIS DRAWING IS UNPUBLISHED  
 500 Democracy, DC, Columbia

REV. NO.		REVISIONS			
DATE	BY	DESCRIPTION	CHKD	APP'D	
E	REV EDO-11-C00219		18APR2011	LH RA	
F	REV ENCL_CD_B0440		16MAY2017	GC DC	

- △ MATERIAL: POLYPHENYLENE OXIDE 94V-0 RATED. SEE TABLE FOR COLOR.
- △ MATERIAL: POLYCARBONATE MOLDING COMPOUND. SEE TABLE FOR COLOR.



DETAIL A  
 SCALE 8:1



△	COLOR	PART NO.
△	AQUA	1-1375092-5
-	BROWN	1-1375092-4
△	ALPINE WHITE	1-1375092-3
△	ROSE	1-1375092-2
-	ELECTRIC IVORY	1-1375092-1
-	NEMA GRAY	1-1375092-0
-	VIOLET	1375092-9
-	WHITE	1375092-8
-	ORANGE	1375092-7
△	BLACK	1375092-6
-	YELLOW	1375092-5
-	BLUE	1375092-4
-	GREEN	1375092-3
-	RED	1375092-2
-	LIGHT ALMOND	1375092-1

THIS DRAWING IS A CONTROLLED DOCUMENT. BY: G. GARRETT, DESIGNED; G. BOYMAN, CHECKED; G. BOYMAN, DRAWN.

DATE: 16MAY2017

APPROVAL: [Signature]

SCALE: 4:1

SHEET: 1 of 1

CUSTOMER DRAWING

COMMSCOPE, INC.  
 VOICE, DATA, CATEGORY

ICON WHEEL, VOICE, DATA, CATEGORY

REV: A1

DATE: 16MAY2017

SCALE: 4:1

SHEET: 1 of 1

REV: F

## X-ON Electronics

Largest Supplier of Electrical and Electronic Components

*Click to view similar products for [Wire Labels & Markers](#) category:*

*Click to view products by [TE Connectivity](#) manufacturer:*

Other Similar products are found below :

[89078GBEST](#) [89082GBESR](#) [89082GBEST](#) [PCL025-4](#) [5761-2SF](#) [58400](#) [586R734H02](#) [M1.040.0000.6](#) [CRS-CM5M](#) [CRS-M18M](#) [CS1836-000](#) [CS8626-000](#) [CU6337-000](#) [CU6342-000](#) [CU6343-000](#) [CWD01-0](#) [CWD012-0](#) [CWD012-7](#) [CWD015-3](#) [CWD015-7](#) [CWD02-0](#) [CWD02-3](#) [CWD02-4](#) [CWD02-6](#) [CWD02-8](#) [CWD02-A](#) [CWD02-D](#) [CWD02-H](#) [CWD02-K](#) [CWD02-L](#) [CWD02-M](#) [CWD02-P](#) [CWD02-Q](#) [CWD02-R](#) [CWD02-U](#) [CWD02-W](#) [CWD02-Y](#) [CWD03-+](#) [CWD03-0](#) [CWD03-P](#) [CWD06-0](#) [CWD06-8](#) [CWD06-9](#) [CWD06-L](#) [CWD06-N](#) [CWD09-0](#) [CWD09-5](#) [CWD09-7](#) [6806810001](#) [CZ2857-000](#)