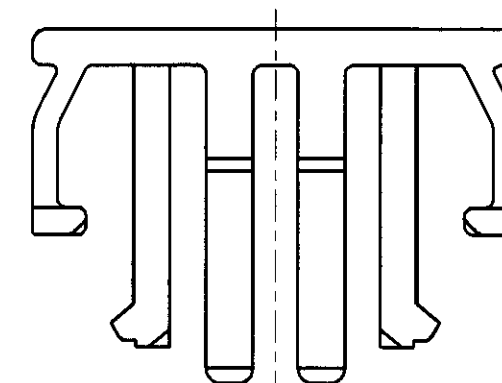
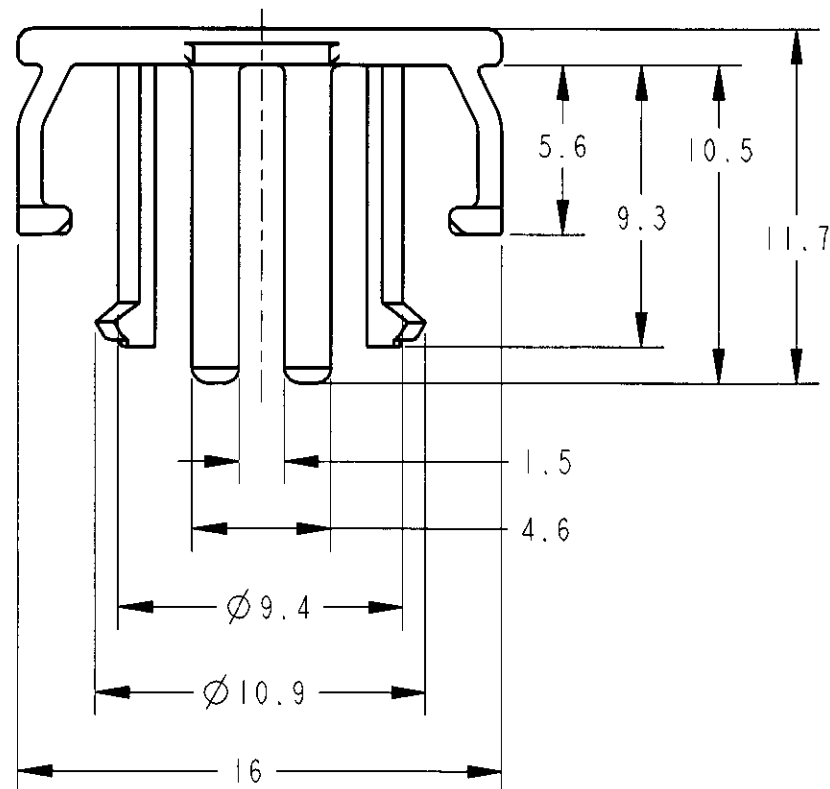
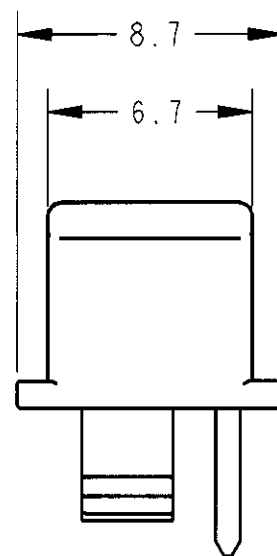
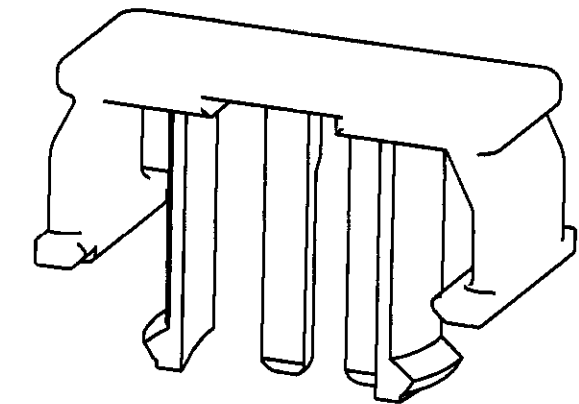
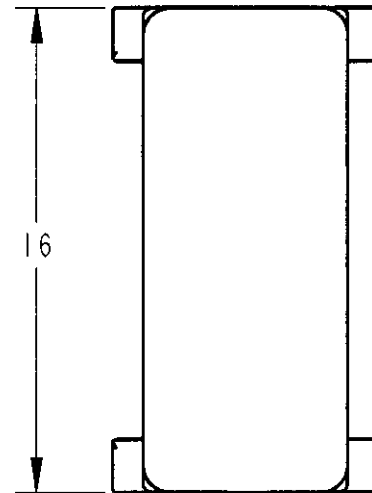


LOC J

DIST -


REVISIONS

P	LTR	DESCRIPTION	DATE	DWN	APVD
0	作成		FJ00-2029-99	30-Nov-99	T.K K.S
A	変更		FJ00-2152-99	14-Dec-99	T.K K.S
B	変更		FJ00-0019-00	31-Jan-00	T.K N.S



- 1. 装着相手型番;
SQUIB CONN. IIDIA PLUG HSG
P/N 1376030
- 2. 取扱説明書; 411-5945
- 1. MATING HOUSING PART NUMBER
IS 1376030
- 2. INSPECTION SHEET; 411-5945

BLACK	1376031-1
COLOR	AMP PART NUMBER

THIS DRAWING IS A CONTROLLED DOCUMENT FOR AMP INCORPORATED. IT IS SUBJECT TO CHANGE AND THE CONTROLLING ENGINEERING ORGANIZATION SHOULD BE CONTACTED FOR THE LATEST REVISION.		DWN T. KOHNO 30-Nov-99	 AMP (JAPAN), LTD. Kawasaki, Japan
DIMENSIONS: mm		CHK N. SAI 30-Nov-99	
TOLERANCES UNLESS OTHERWISE SPECIFIED: 0 PLC ±0.2 1 PLC ±0.2 2 PLC ±0.2 3 PLC ±0.2 4 PLC ±0.2 ANGLES ±3		APVD K. SHIMIZU 30-Nov-99	
MATERIAL PBT ガラス入り		FINISH BLACK	
PRODUCT SPEC 108-5679		NAME SQUIB CONN. IIDIA LOCKING BUTTON	SIZE A3
APPLICATION SPEC 114-5234		WEIGHT 0.4g	CAGE CODE 00779
CUSTOMER DRAWING		DRAWING NO C-1376031	SCALE 4:1
		SHEET 1	OF 1
		REV B	

X-ON Electronics

Largest Supplier of Electrical and Electronic Components

Click to view similar products for [Automotive Connectors](#) category:

Click to view products by [TE Connectivity](#) manufacturer:

Other Similar products are found below :

[003-018-000](#) [60403001](#) [60993906-B](#) [M902-2131](#) [M902-2161](#) [M902-2344](#) [72.330.1035.1](#) [73.353.4028.0](#) [F119300-B](#) [F166900](#) [F258300-B](#)
[F358300-B](#) [F407400](#) [F444110](#) [F487000](#) [F509500B-B](#) [827153-1](#) [8N1515-32-24P](#) [9-1326729-8](#) [925474-1](#) [928905-1](#) [964562-4](#) [968782-1](#)
[GT17SA-8DS-HU](#) [98891-1012](#) [98947-1016](#) [12004147](#) [12004475-L](#) [12010290](#) [12010309-B](#) [12015454](#) [12020219-B](#) [12041318-B](#) [12052225-](#)
[L](#) [12052466](#) [12064869](#) [12004327-B](#) [12015308](#) [12015384](#) [12015909](#) [1-21030-1](#) [12041254](#) [12041318](#) [12047946-B](#) [12047957](#) [12047957-L](#)
[12059473](#) [12066261](#) [12110546](#) [12110546-B](#)