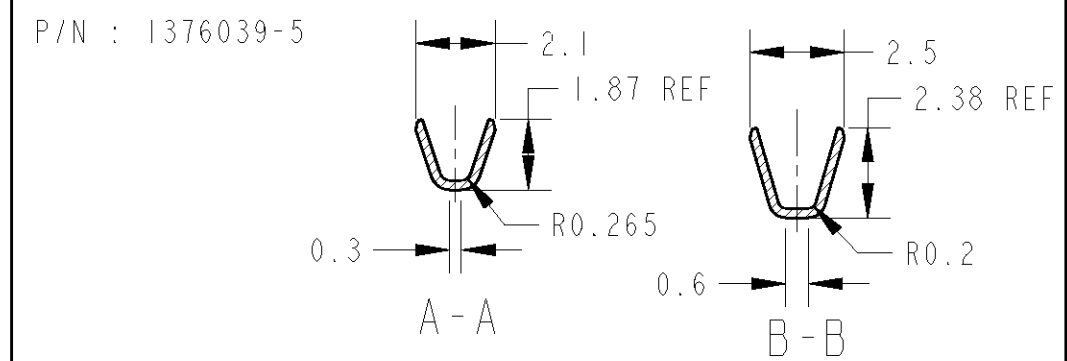
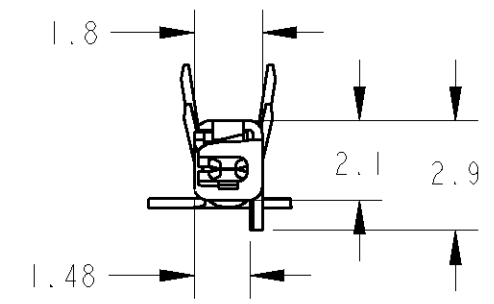
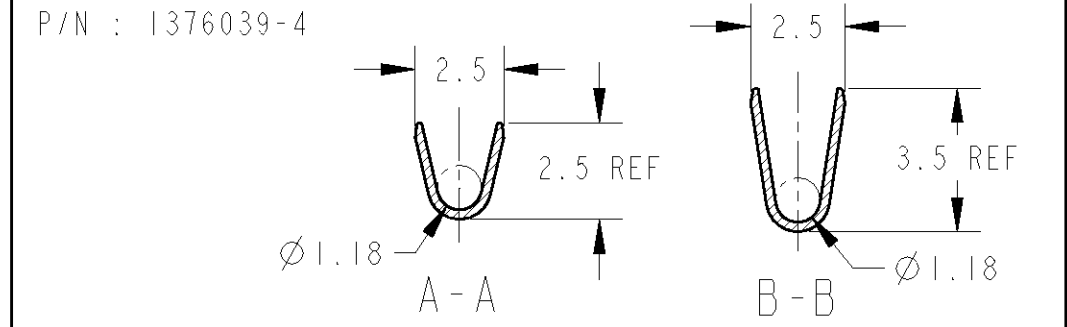
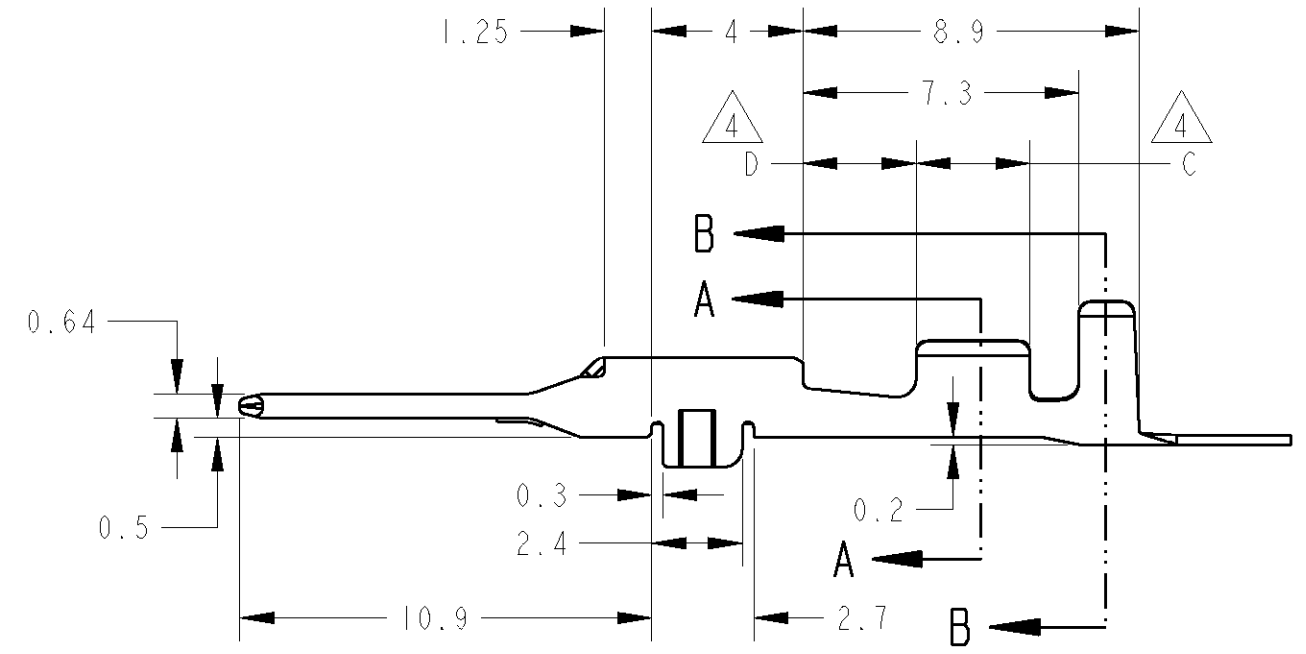
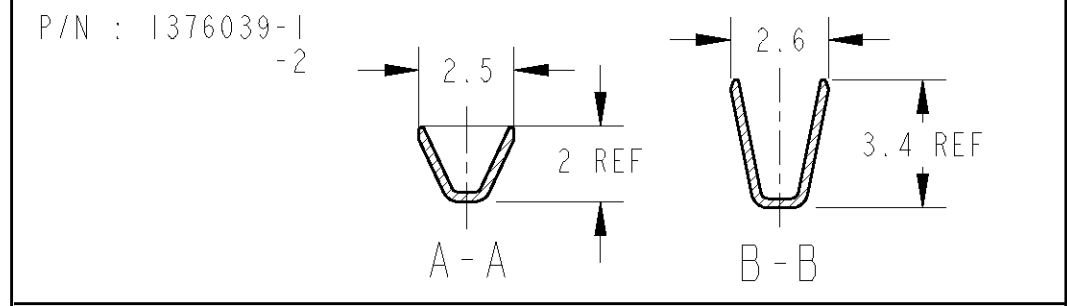
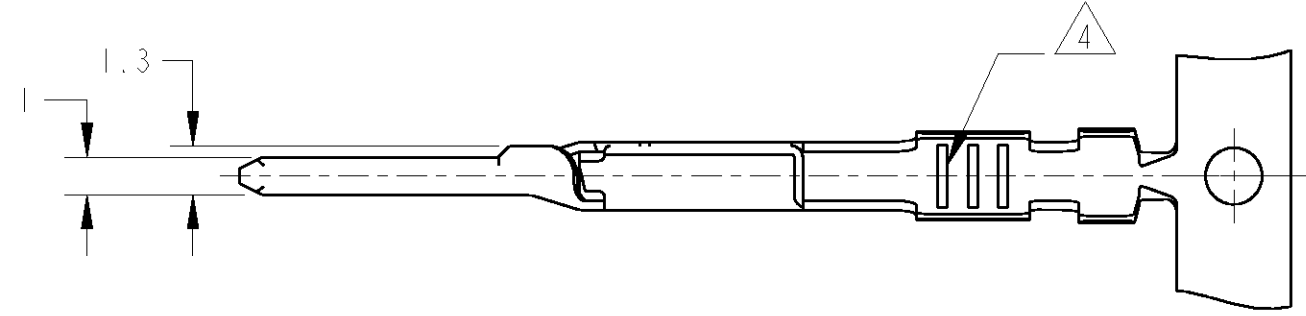


THIS DRAWING IS UNPUBLISHED. RELEASED FOR PUBLICATION 20
 © COPYRIGHT 20 BY TYCO ELECTRONICS CORPORATION. ALL RIGHTS RESERVED.

LOC	DIST	REVISIONS						
J	-	P	LTR	DESCRIPTION	ECN	DATE	DWN	APVD
		03		修正 REVISD	FJA0-0365-04	23JUN04	DM	KS
		A		REVISD ECR-05-011780		21APR06	ES	YF



- ① . APPLICABLE WIRE RANGE
AVSS,CAVS,CAVUS 0.3~0.5mm²
- ② . APPLICABLE WIRE RANGE.
AVSS,CAVS,CAVUS 0.85mm²
- ③ . APPLICABLE WIRE RANGE
CHFUS 0.22mm²
- ④ . SEE TABLE

- ① . 適応電線
AVSS,CAVS,CAVUS 0.3~0.5mm²
- ② . 適応電線
AVSS,CAVS,CAVUS 0.85mm²
- ③ . 適応電線
CHFUS 0.22mm²
- ④ . 表参照

NUMBER OF SERRATIONS	DIMENSION		REMARKS	APPLICABLE WIRE RANGE(適応電線)	FINISH (仕上)	PART NUMBER(型番)
	D	C				
3	3	3	LOOSE PIECE(バラ状)	②	PRE-TIN (すずめっき済)	1565294-1
3	3	3	LOOSE PIECE(バラ状)	①	PRE-TIN (すずめっき済)	1565292-1
2	3.7	2.3	STRIP FORM(連鎖状)	③	PRE-TIN (すずめっき済)	1376039-5
3	3	3	STRIP FORM(連鎖状)	②	PRE-TIN (すずめっき済)	1376039-4
3	3	3	STRIP FORM(連鎖状)	①	PRE-TIN (すずめっき済)	1376039-1

DIMENSIONS: 単位: 概 mm 		TOLERANCES UNLESS OTHERWISE SPECIFIED: 一般公差 = ±0.3 0-PLC ± 1-PLC ±0.1 2-PLC ±0.01 3-PLC ±0.001 4-PLC ±0.0001 ANGLES ±3'00"		DWN K. IRIKURA 22NOV00 CHK N. SAI 22NOV00 APVD N. SAI 22NOV00 PRODUCT SPEC 製品規格 APPLICATION SPEC 取付適用規格 114-5297		tyco Electronics Tyco Electronics AMP K.K. Kawasaki, Japan	
MATERIAL 黄銅 仕上 表参照		FINISH 表参照		WEIGHT 0.25g		NAME 名称 040 NK TAB NON SEALED CONTACT	
CUSTOMER DRAWING		SIZE A3		CAGE CODE 00779		DRAWING NO 番号 1376039	
SCALE 5:1		SHEET 1 OF 1		REV A		RESTRICTED TO	

X-ON Electronics

Largest Supplier of Electrical and Electronic Components

Click to view similar products for [Terminals](#) category:

Click to view products by [TE Connectivity](#) manufacturer:

Other Similar products are found below :

[HT-13-10](#) [71M-250-32-NB](#) [01-2065-1-0216](#) [00581P0075](#) [M10-10RX](#) [M10BCK](#) [60205-1](#) [604200-1](#) [60598-1-CUT-TAPE](#) [60617-1-C](#) [60873-1](#) [M14-516R/SK](#) [M14-6RSX](#) [M18-10FLX](#) [M18-8FBX](#) [M18-8R/LX](#) [M18BCK](#) [61314-6-C](#) [61-S](#) [61-SN-A](#) [62149-1](#) [62-NBM-A](#) [63-S](#) [640179-1](#) [640917-2-CUT-TAPE](#) [6501550002](#) [66107-2-C](#) [66107-4-C](#) [696683-1](#) [696834-1](#) [696861-1](#) [696931-1](#) [696999-1](#) [M8-516RK](#) [M86700006](#) [MA250DMFMX-A](#) [701-2007](#) [701-2307](#) [701-7761-03](#) [70F-110-32-PB](#) [718-N-A](#) [71M-187-20-NBL](#) [71M-250-32-NBL](#) [72F-187-20-NBL](#) [72M-250-32-NBL](#) [7310](#) [73F-250-32](#) [73F-250-32-NBL](#) [73F-250-32-NL](#) [F-1M](#)