

THIS DRAWING IS UNPUBLISHED. RELEASED FOR PUBLICATION
 © COPYRIGHT 2000 ALL RIGHTS RESERVED.

LOC	DIST	REVISIONS					
		P	LTR	DESCRIPTION	DATE	DWN	APVD
J			A3	REVISED PER ECO-11-005140	05APR2011	RK	HMR

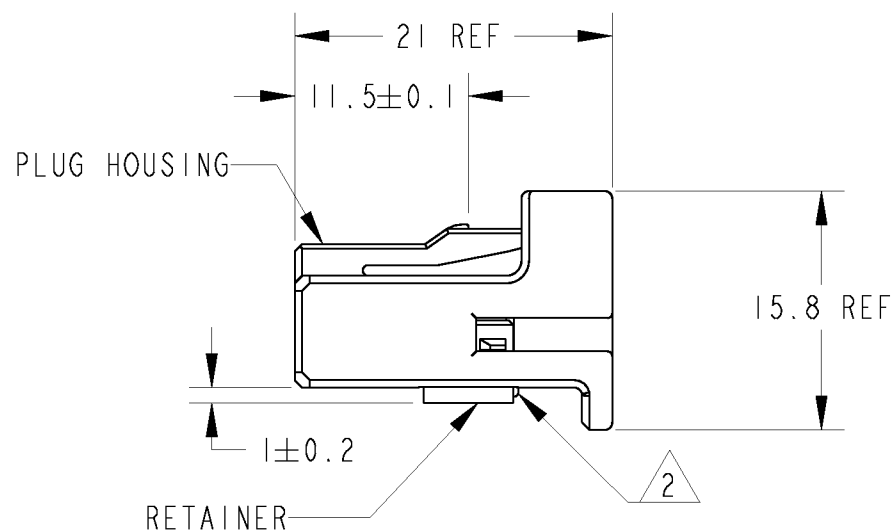
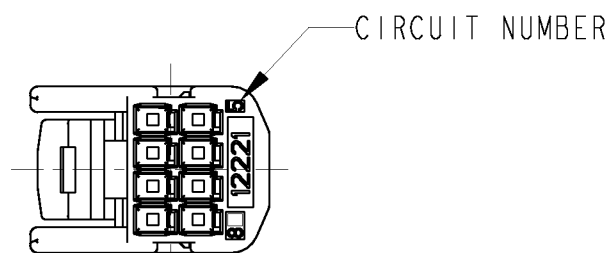
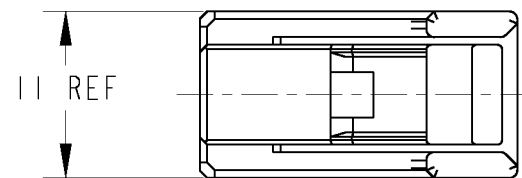
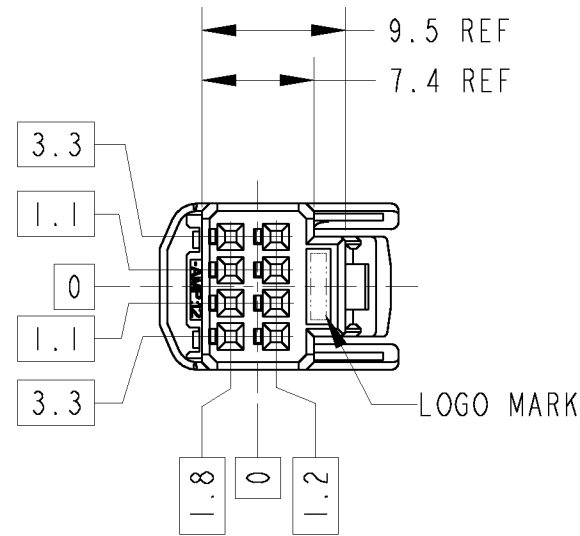


TABLE-1

POS. 極数	CAP ASSEMBLY P/N
8	1376350
	1473793

TABLE-2

	FINISH めっき	TERMINAL P/N 端子型番	APPLICABLE WIRE RANGE 適用電線
SIGNAL 025	TIN	1123343-1	AVSS/AVSSH-f/AESSX 0.3~0.5mm ²
	SELECTIVE GOLD	1123343-2	CAVS/CAVUS 0.22~0.5mm ²

PACKING STYLE 梱包形態	COLOR	PART NUMBER
PAPER BOX ダンボール	BLACK	1376352-2
PLASTIC BAG ビニール袋	NATURAL	1376352-1
OUTER 外装	INNER 内装	

- RETAINER SHOULD BE SET TO THE PRE-ASSEMBLY POSITION WITHIN THE PLUG HOUSING WHEN SHIPPED TO THE CUSTOMER.
- △ THE RETENSION LATCH OF THE PLATE MUST BE OUT SIDE OF PLUG HOUSING WHEN PRE-ASSEMBLY.
- RETAINER RETENSION FORCE FROM HOUSING;30N MIN.
- INSTRUCTION SHEET NO.411-5928
- PART NO. OF CAP HOUSING TO BE MATED ; SEE TABLE-1
- APPLIED TERMINAL ; SEE TABLE-2

- プラグハウジングにリテーナを仮止めして出荷される。
- △ 仮係止時リテーナ突起がハウジングの外側に出ていること。
- リテーナの仮係止保持力は30N MIN.
- 取扱説明書NO. 411-5928
- 嵌合相手ハウジング型番 ; TABLE-1参照
- 適用端子 ; TABLE-2参照

THIS DRAWING IS A CONTROLLED DOCUMENT.

DIMENSIONS: 単位: ㎜	TOLERANCES UNLESS OTHERWISE SPECIFIED: 一般公差 = ± 0.3	DWN N. YASUDA 05JUL00	TE Connectivity
	0-PLC ± 1-PLC ±0.5 2-PLC ±0.13 3-PLC ±0.013 4-PLC ±0.0001 ANGLES ±3°	CHK N. SAI 06JUL00	
		MATERIAL 材料 PBT	FINISH 仕上 NATURAL
		PRODUCT SPEC 製品規格 108-5668	NAME 名称 025 SERIES I/O CONNECTOR 8POSITION PLUG HOUSING ASSEMBLY
		APPLICATION SPEC 取付適用規格 114-5250	SIZE A3
		WEIGHT 1.6 g	CAGE CODE 00779
		CUSTOMER DRAWING	DRAWING NO C=1376352
		SCALE 尺度 2:1	RESTRICTED TO
		SHEET 1 OF 1	REV A3

X-ON Electronics

Largest Supplier of Electrical and Electronic Components

Click to view similar products for [Automotive Connectors](#) category:

Click to view products by [TE Connectivity](#) manufacturer:

Other Similar products are found below :

[003-018-000](#) [60403001](#) [60993906-B](#) [M902-2131](#) [M902-2161](#) [72.330.1035.1](#) [73.353.4028.0](#) [F119300-B](#) [F166900](#) [F258300-B](#) [F358300-B](#)
[F407400](#) [F444110](#) [F487000](#) [F509500B-B](#) [827153-1](#) [8N1515-32-24P](#) [9-1326729-8](#) [925474-1](#) [928905-1](#) [964562-4](#) [968782-1](#) [GT17SA-8DS-](#)
[HU](#) [98891-1012](#) [98947-1016](#) [12004147](#) [12004475-L](#) [12010290](#) [12010309-B](#) [12015454](#) [12020219-B](#) [12020308](#) [12041318-B](#) [12052225-L](#)
[12052466](#) [12059125](#) [12064869](#) [12004327-B](#) [12010503-B](#) [12015308](#) [12015384](#) [12015909](#) [1-21030-1](#) [12041254](#) [12041318](#) [12047946-B](#)
[12047957](#) [12047957-L](#) [12059473](#) [12066261](#)