

THIS DRAWING IS UNPUBLISHED.

RELEASED FOR PUBLICATION

© COPYRIGHT 2000

ALL RIGHTS RESERVED.

LOC	DIST	REVISIONS					
		P	LTR	DESCRIPTION	DATE	DWN	APVD
J			A3	REVISED PER ECO-11-005140	05APR2011	RK	HMR

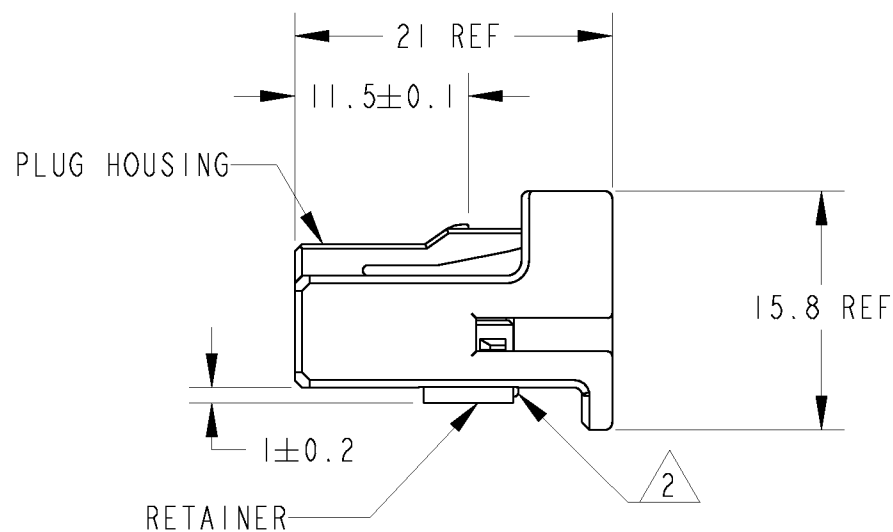
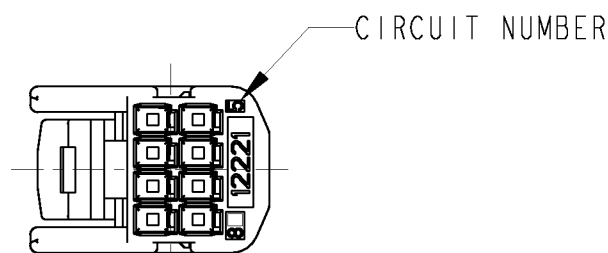
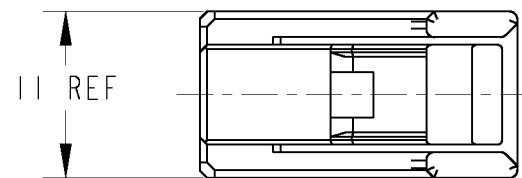
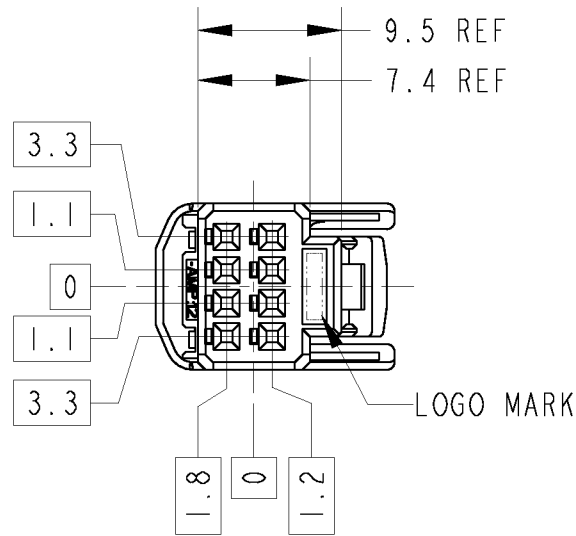


TABLE-1

POS. 極数	CAP ASSEMBLY P/N
8	1376350
	1473793

TABLE-2

SIGNAL	FINISH	TERMINAL P/N	APPLICABLE WIRE RANGE
	めっき	端子型番	適用電線
025	TIN	1123343-1	AVSS/AVSSH-f/AESSX 0.3~0.5mm <sup>2</sup>
	SELECTIVE GOLD	1123343-2	CAVS/CAVUS 0.22~0.5mm <sup>2</sup>

PACKING STYLE	COLOR	PART NUMBER
PAPER BOX ダンボール	BLACK	1376352-2
PLASTIC BAG ビニール袋	NATURAL	1376352-1
OUTER 外装	INNER 内装	

- RETAINER SHOULD BE SET TO THE PRE-ASSEMBLY POSITION WITHIN THE PLUG HOUSING WHEN SHIPPED TO THE CUSTOMER.
- THE RETENSION LATCH OF THE PLATE MUST BE OUT SIDE OF PLUG HOUSING WHEN PRE-ASSEMBLY.
- RETAINER RETENSION FORCE FROM HOUSING;30N MIN.
- INSTRUCTION SHEET NO.411-5928
- PART NO. OF CAP HOUSING TO BE MATED ; SEE TABLE-1
- APPLIED TERMINAL ; SEE TABLE-2

- プラグハウジングにリテーナを仮止めして出荷される。
- 仮係止時リテーナ突起がハウジングの外側に出ていること。
- リテーナの仮係止保持力は30N MIN.
- 取扱説明書NO. 411-5928
- 嵌合相手ハウジング型番 ; TABLE-1参照
- 適用端子 ; TABLE-2参照

THIS DRAWING IS A CONTROLLED DOCUMENT.

DIMENSIONS: 単位: 概 mm	TOLERANCES UNLESS OTHERWISE SPECIFIED: 一般公差 = ± 0.3	DWN N. YASUDA 05JUL00	TE Connectivity
	0-PLC ± 1-PLC ±0.5 2-PLC ±0.13 3-PLC ±0.013 4-PLC ±0.0001 ANGLES ±3°	CHK N. SAI 06JUL00	
		APVD N. SAI 06JUL00	
MATERIAL 材料 PBT	FINISH 仕上 NATURAL	PRODUCT SPEC 108-5668	NAME 名称 025 SERIES I/O CONNECTOR 8POSITION PLUG HOUSING ASSEMBLY
		APPLICATION SPEC 取付適用規格 114-5250	SIZE A3
		WEIGHT 1.6 g	CAGE CODE 00779
		CUSTOMER DRAWING	DRAWING NO C=1376352
			RESTRICTED TO
			SCALE 尺度 2:1
			SHEET 1
			OF 1
			REV A3

## X-ON Electronics

Largest Supplier of Electrical and Electronic Components

*Click to view similar products for [Automotive Connectors](#) category:*

*Click to view products by [TE Connectivity](#) manufacturer:*

Other Similar products are found below :

[003-018-000](#) [60993906-B](#) [72.330.1035.1](#) [776880-1](#) [827153-1](#) [9-1326729-8](#) [9-221607-5](#) [925474-1](#) [928905-1](#) [964562-4](#) [968782-1](#) [98891-1012](#) [12004468](#) [12004475-L](#) [12004483](#) [12052466](#) [12066163](#) [12015909](#) [12077753](#) [1-21030-1](#) [12047957](#) [12047958](#) [12084688](#) [12185550](#) [12336-12](#) [1-326211-1](#) [13681974](#) [13688972](#) [13755420](#) [13779834](#) [13783086](#) [13843152](#) [13522378](#) [13581967](#) [13669624](#) [13675513](#) [13753471](#) [13946876](#) [13953457](#) [13955963](#) [13964573](#) [13971791](#) [13790534-L](#) [13797473](#) [13805590](#) [13888202](#) [1428188-1](#) [1437287-3](#) [1428188-2](#) [DS07-19S-5020](#)