

THIS DRAWING IS UNPUBLISHED.
 DIFFUSION RESTREINTE
 © COPYRIGHT 2000 BY TYCO ELECTRONICS CORPORATION. ALL RIGHTS RESERVED.
 TOUS DROITS RESERVES

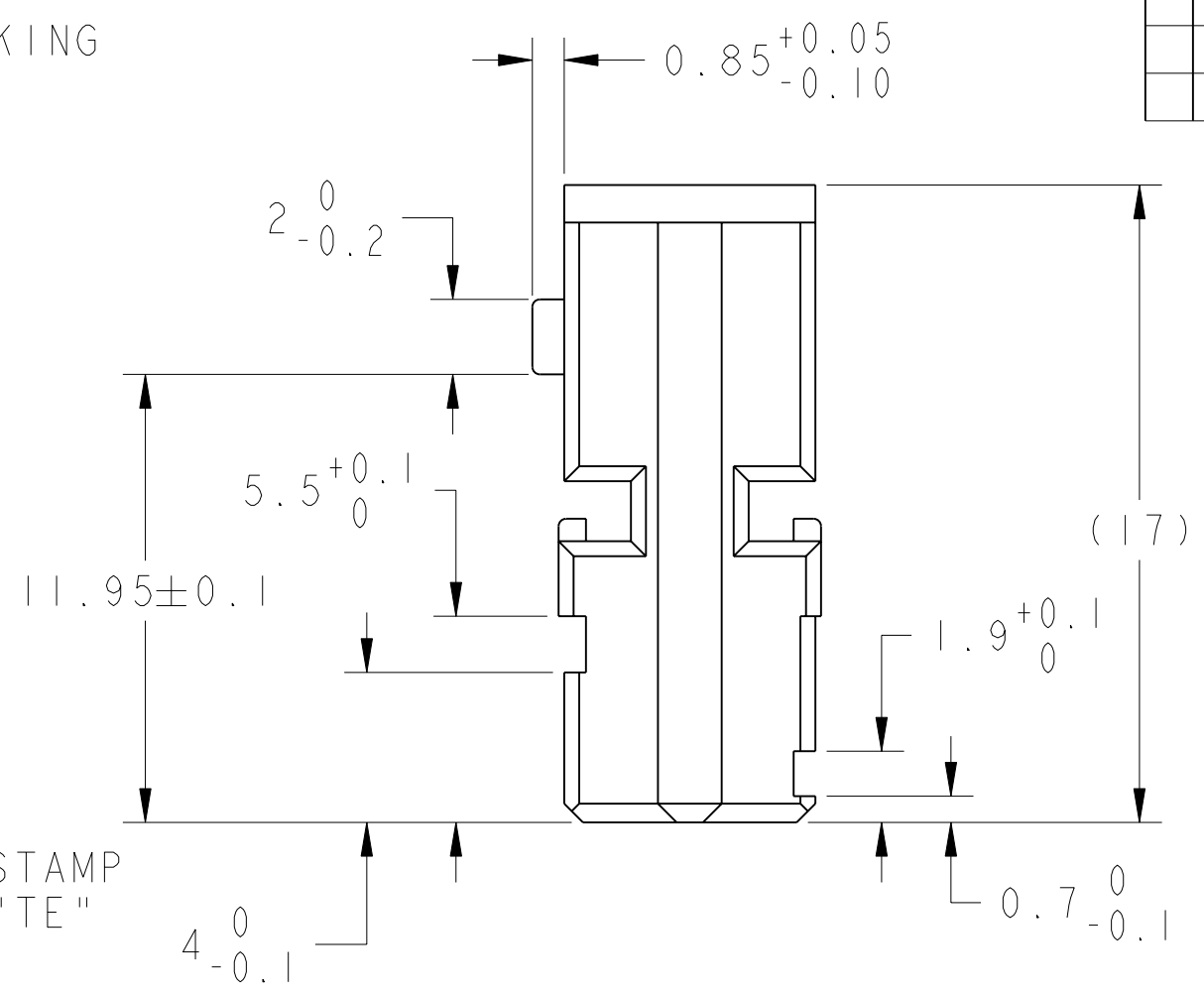
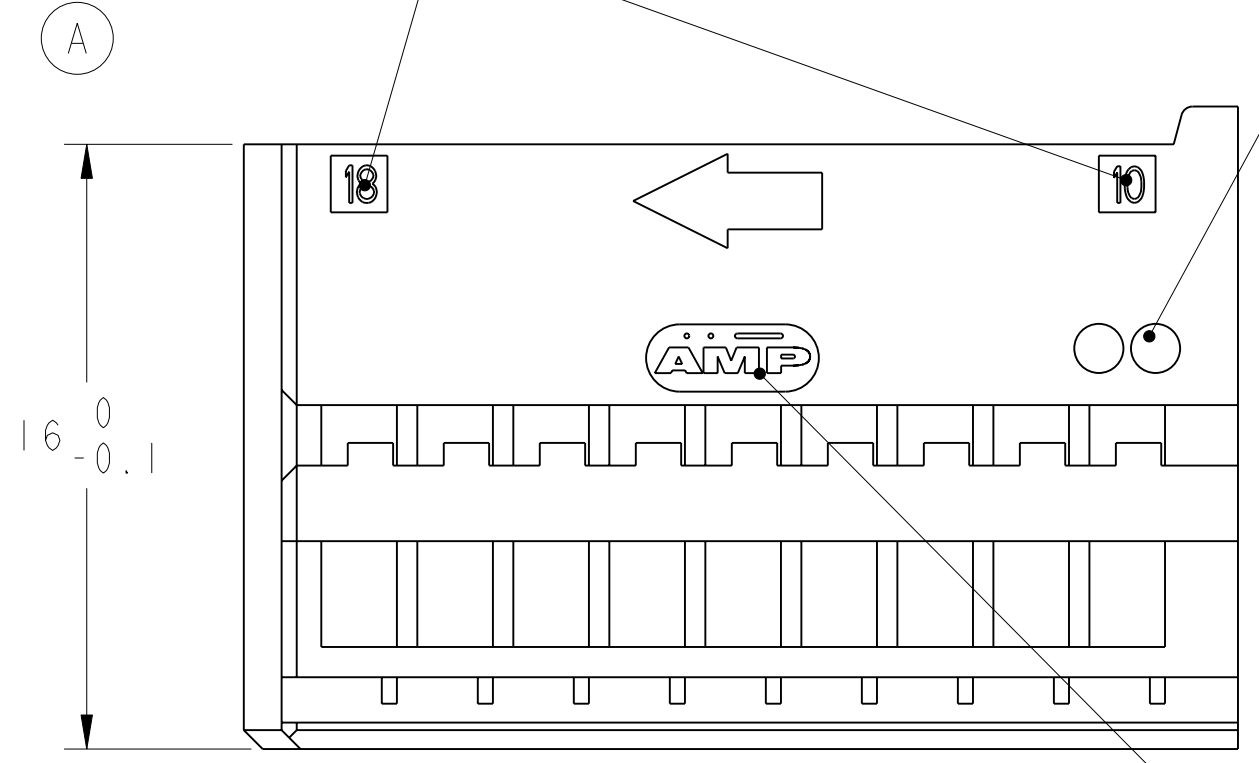
RELEASED FOR PUBLICATION
 LIBRE A LA DIFFUSION
 2000

LOC F
 DIST 00

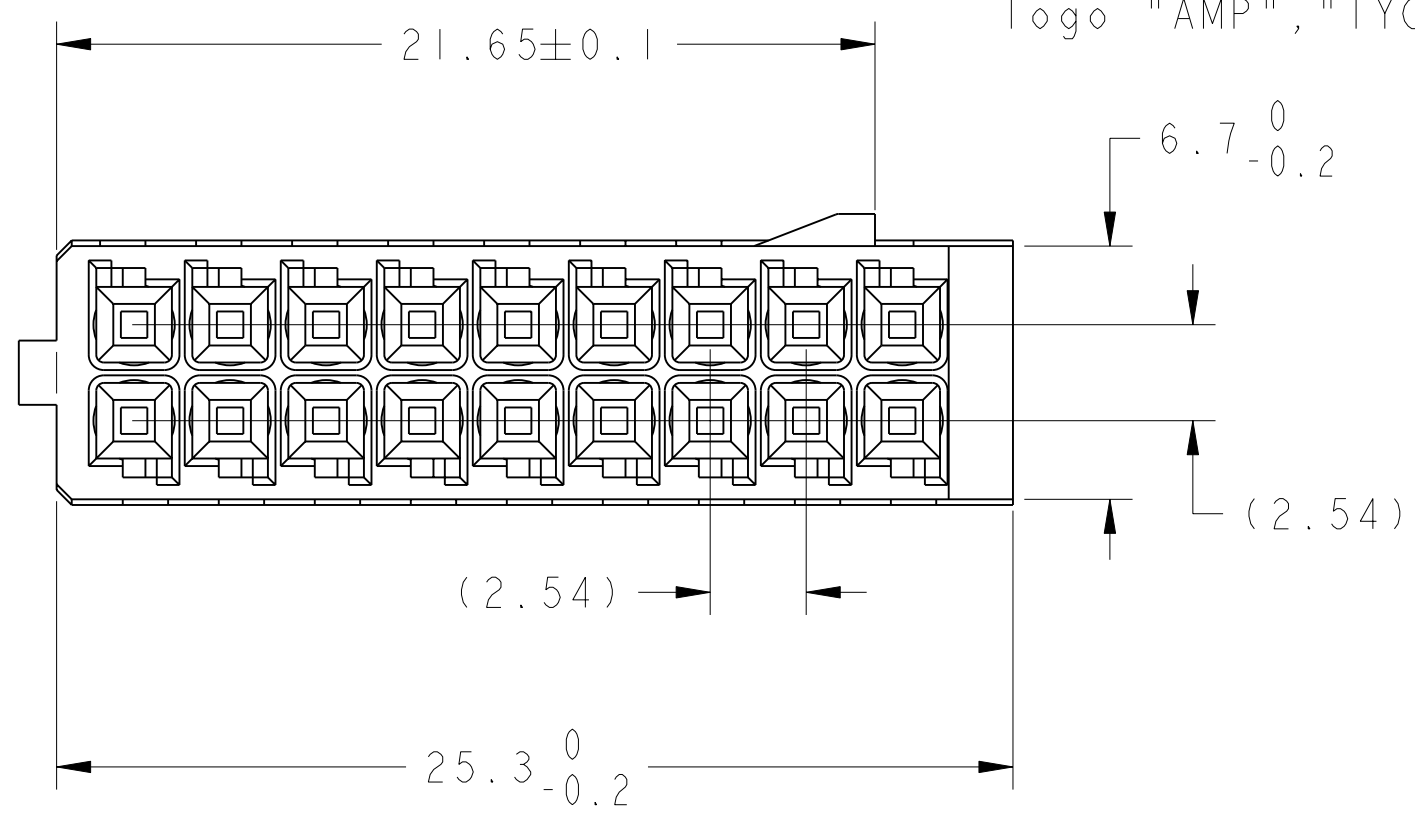
REVISIONS					
P	LTR	DESCRIPTION MODIFICATIONS	DATE	DWN DESS.	APVD APP.
A		PRECISION OF SPEC PRODUCT AND APPLIC. SPEC	28APR2006	MP	XR
B		CLARIFICATION CONCERNING TE STAMP	22JAN2008	MP	MAA

CAVITY MARKING
 reperes alveoles

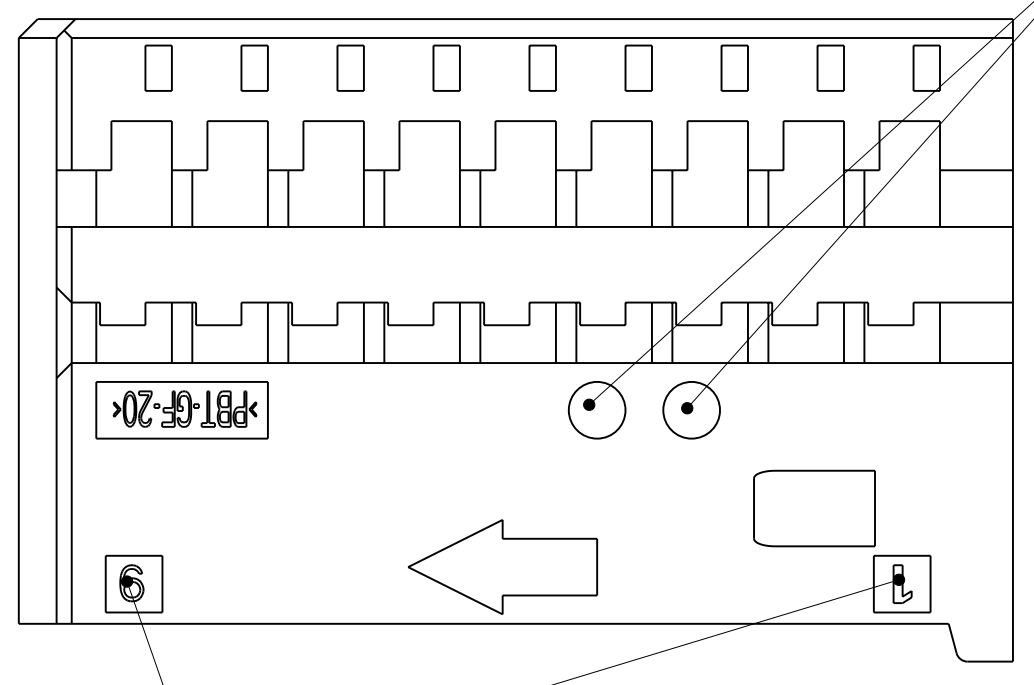
MOLD CAVITY MARKING
 n° d'empreinte



"AMP", "TYCO" or "TE" STAMP
 logo "AMP", "TYCO" ou "TE"



EXCHANGEABLE MANUFACTURING DATE
 cote date moulage



CAVITY MARKING
 reperes alveoles

PBT 20% FV	BLACK noir	1379102-1
MATERIAL matiere	COLOR couleur	PN TE ref TE

- 1 ENGLISH PRODUCT SPECIFICATION: 108-15262-1
- 2 ENGLISH APPLICATION SPECIFICATION: 411-15654-1

<small>THIS DRAWING IS A CONTROLLED DOCUMENT FOR TYCO ELECTRONICS CORPORATION IT IS SUBJECT TO CHANGE AND THE CONTROLLING ENGINEERING ORGANIZATION SHOULD BE CONTACTED FOR THE LATEST REVISION. CE PLAN EST UN DOCUMENT CONTROLE PAR AMP INCORPORATED. IL EST SUSCEPTIBLE D'UNE REVISION. CONTACTER LE SERVICE TECHNIQUE D'AMP DE FRANCE POUR OBTENIR LA DERNIERE REVISION.</small>		DWN/DESSINE M. POLIFONTE 07OCT1999 CHK/VERIFIE J. LALANGE 07OCT1999 APVD/APROUVE JJ REVII 07OCT1999	Tyco Electronics TYCO ELECTRONICS France SAS BP 39, 95301 CERGY-PONTOISE Cedex
DIMENSIONS: mm 	TOLERANCES UNLESS OTHERWISE SPECIFIED: TOLERANCES NON SPECIFIEES (SUIV. NR DE DECIMALES) ±0.2 ANGLES FINISH/FINITION	PRODUCT SPEC SPEC. PRODUIT 108-15262 (A) (1) APPLICATION SPEC SPEC. APPLICATION 411-15654 (B) (2)	NAME TITRE MODULE 18 VOIES MQS GENE II SOCKET HOUSING FOR MQS 18 POS (A)
MATERIAL/MATIERE SEE TABLE	WEIGHT MASSE APPROX. 3g (A)	SIZE FORMAT A2	CAGE CODE DRAWING NO No PLAN 1379102
CUSTOMER DRAWING /PLAN CLIENT		UNIFORMITY POUR REFERENCE SCALE ECHELLE 5:1	SHEET FEUILLE 1 OF DE 1 REV B

X-ON Electronics

Largest Supplier of Electrical and Electronic Components

Click to view similar products for [Automotive Connectors](#) category:

Click to view products by [TE Connectivity](#) manufacturer:

Other Similar products are found below :

[003-018-000](#) [60403001](#) [60993906-B](#) [M902-2131](#) [M902-2161](#) [M902-2344](#) [72.330.1035.1](#) [73.353.4028.0](#) [F119300-B](#) [F166900](#) [F258300-B](#)
[F358300-B](#) [F407400](#) [F444110](#) [F487000](#) [F509500B-B](#) [827153-1](#) [8N1515-32-24P](#) [9-1326729-8](#) [925474-1](#) [928905-1](#) [964562-4](#) [968782-1](#)
[GT17SA-8DS-HU](#) [98891-1012](#) [98947-1016](#) [12004147](#) [12004475-L](#) [12010290](#) [12010309-B](#) [12015454](#) [12020219-B](#) [12041318-B](#) [12052225-](#)
[L](#) [12052466](#) [12064869](#) [12004327-B](#) [12015308](#) [12015384](#) [12015909](#) [1-21030-1](#) [12041254](#) [12041318](#) [12047946-B](#) [12047957](#) [12047957-L](#)
[12059473](#) [12066261](#) [12110546](#) [12110546-B](#)