

THIS DRAWING IS UNPUBLISHED.  
 DIFFUSION RESTREINTE

RELEASED FOR PUBLICATION  
 LIBRE A LA DIFFUSION

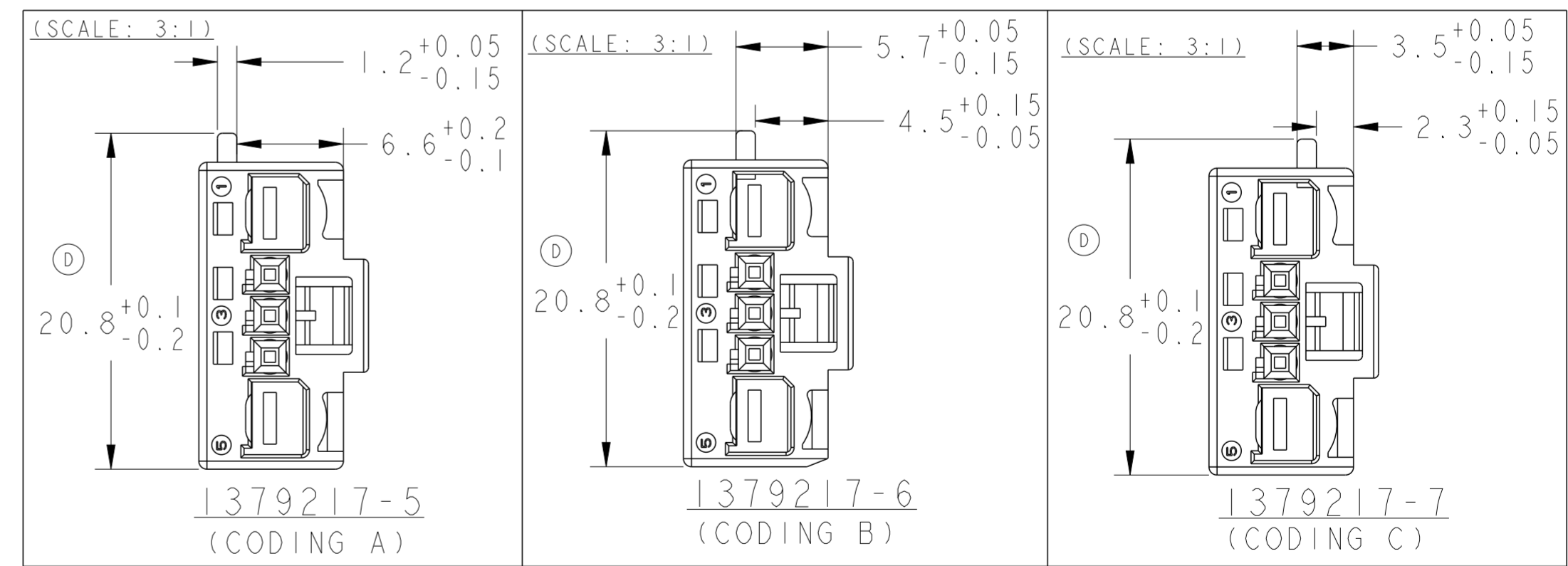
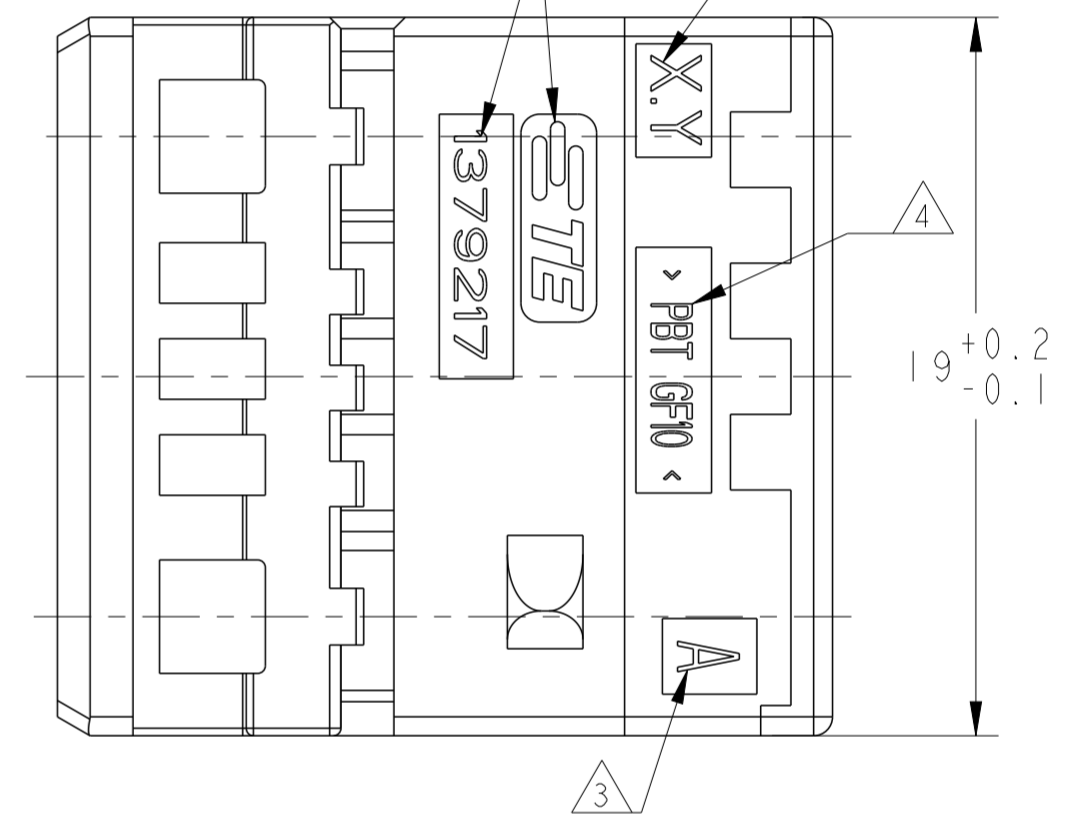
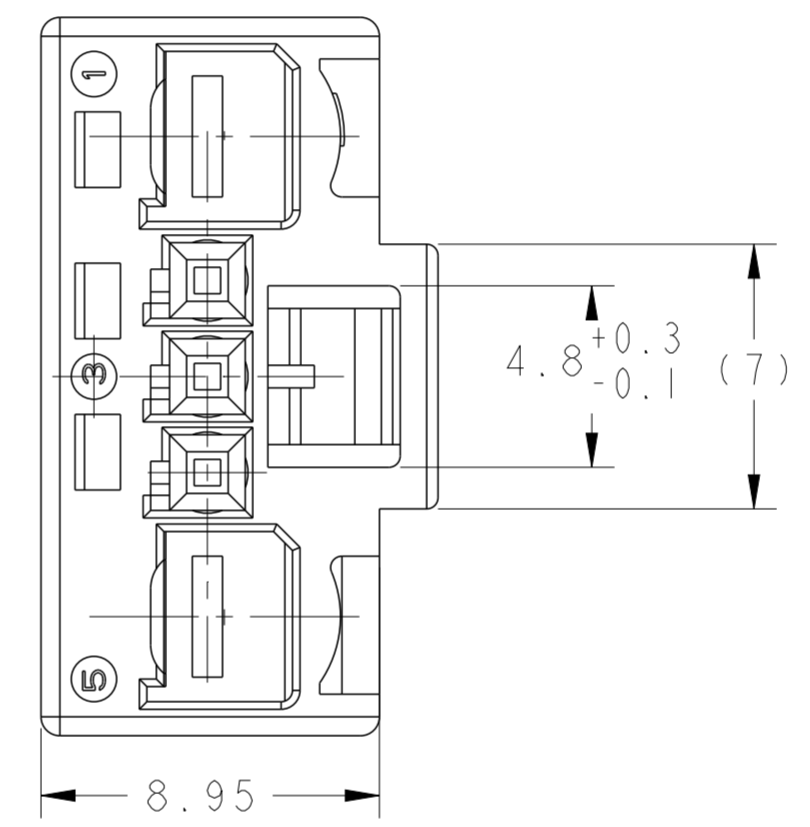
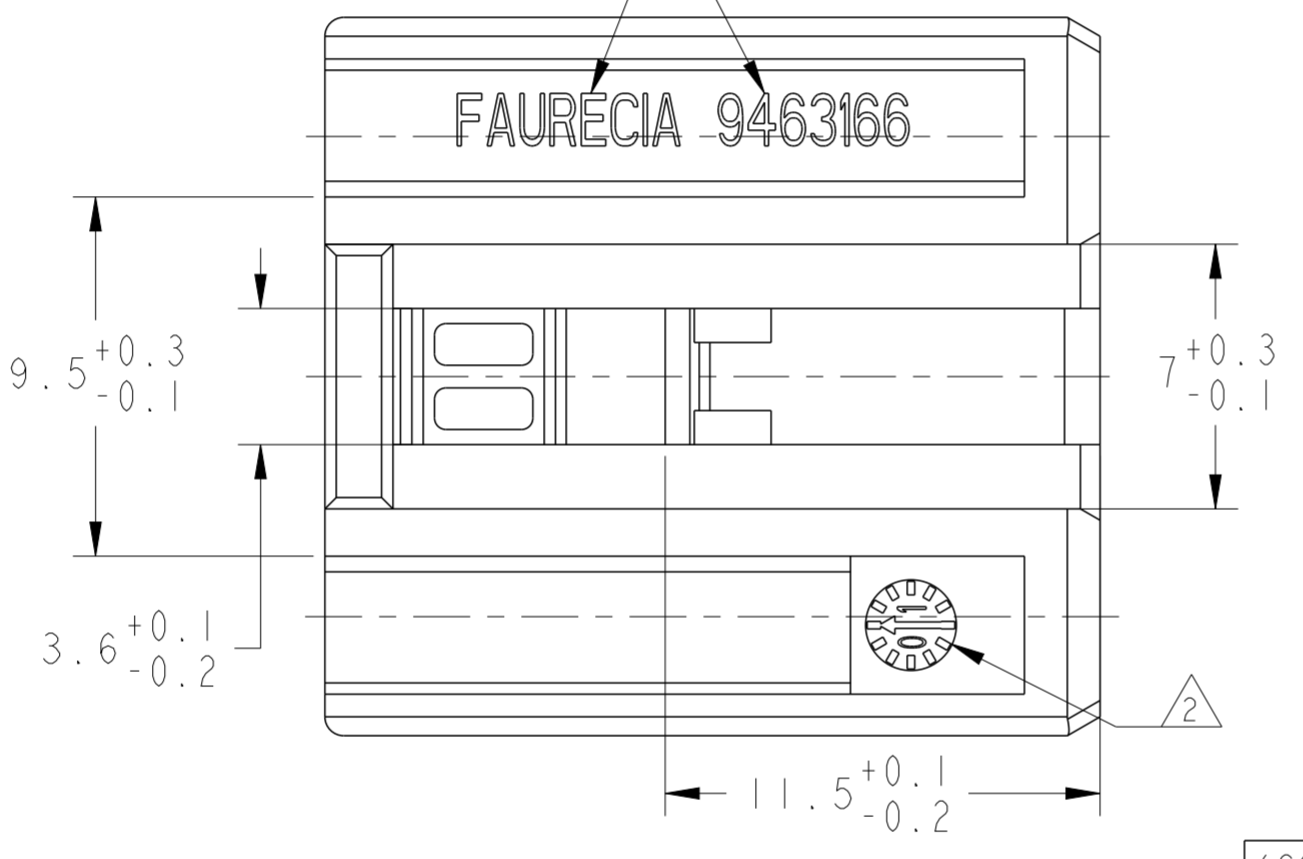
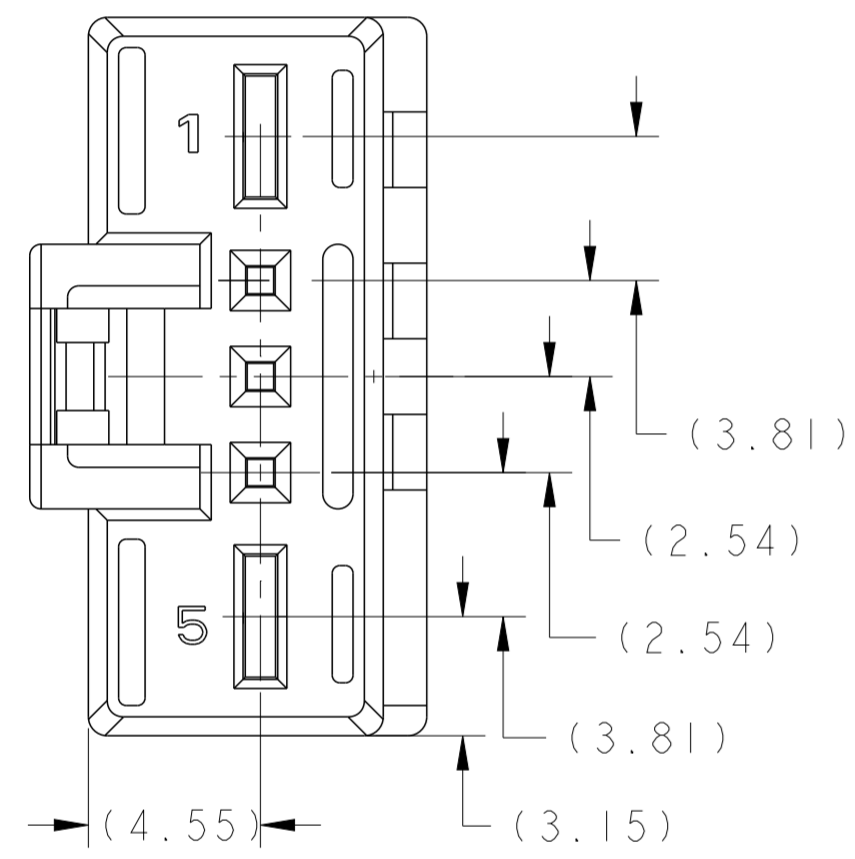
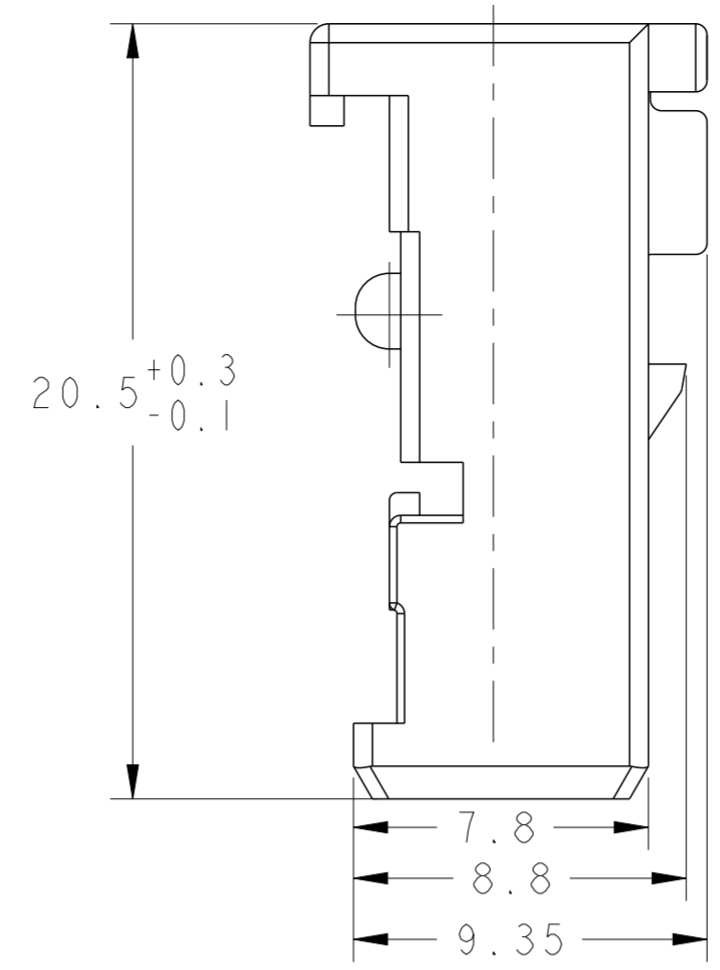
20

ALL RIGHTS RESERVED.  
 TOUS DROITS RESERVES

© COPYRIGHT 20 BY -

REVISIONS					
P	LTR	DESCRIPTION MODIFICATIONS	DATE	DWN DESS.	APVD APP.
C		ADD THE NEW P/NS : 1379217-5/-6/-7	15DEC2004	NT.N	J.L
D		UP DATE THE DRAWING	17FEB2005	NT.N	J.L
D1		REVISED PER ECO-11-005150	20APR11	RK	HMR
D2		ECR-15-017891	14DEC2015	KCD	SA

- NOTES:
- 1 AREA FOR OPTIONAL CUSTOMER NAME & PART NUMBER  
ZONE POUR NOM & REFERENCE CLIENT OPTIONNELS
  - 2 CODING DATE  
DATE CODE
  - 3 REVISION STATUT OF THE MOLD  
REVISION DU MOULE
  - 4 MATERIAL IDENTIFICATION  
MARQUAGE DE MATIERE
  - 5 CAVITY MARKING  
NUMERO D' EMPREINTE DU MOULE
  - 6 LOGO & P/N OF TE (AMP)  
LOGO & REFERENCE DE TE (AMP)
  - 7 MUST BE USED WITH COVER PN 1379218-1 OR -2  
DOIT ETRE UTILISE AVEC LE COUVERCLE 1379218-1 OU -2
  - 8 FOR THE CONNECTOR INTERFACE, SEE THE DRW OF P/N 208-15621  
POUR L' INTERFACE DE CONNECTEUR, VOIR PLAN DE REF. 208-15621
  - 9 CAVITY 1 & 5 SUITABLE TO WIRE SIZE RANGE 0.75 TO 2.5 mm<sup>2</sup>  
ALVEOLES 1 & 5 ADAPTEES AUX JAUGES DE FILS 0.75 A 2.5 mm<sup>2</sup>
  - 10 CAVITY 2,3,4 SUITABLE TO WIRE SIZE RANGE 0.25 TO 0.5 mm<sup>2</sup>  
ALVEOLES 2,3,4 ADAPTEES AUX JAUGES DE FILS 0.25 A 0.5 mm<sup>2</sup>



1379217-7	-	BLUE (BLEU) (D)	C	
1379217-6	-	WHITE (BLANC)	B	
1379217-5	-	BLACK (NOIR)	A	
1379217-4		WHITE (BLANC)	NEUTRAL (NEUTRE)	FAURECIA (A)
1379217-3		BLACK (NOIR)		
1379217-2	9463166-2	WHITE (BLANC)		
1379217-1	9463166-1	BLACK (NOIR)		
TE P/N (REF. TE)	FAURECIA P/N (REF. FAURECIA)	COLOR (COULEUR)	CODING (DETROMPAGE)	PART NUMBER RESTRICTED ONLY TO (REFERENCE RESERVEE UNIQUEMENT A)

THIS DRAWING IS A CONTROLLED DOCUMENT.  
 CE PLAN EST UN DOCUMENT CONTROLE PAR TYCO ELECTRONICS. IL EST SUSCEPTIBLE D'ETRE REVISE. CONTACTER LE SERVICE TECHNIQUE DE TYCO ELECTRONICS POUR OBTENIR LA DERNIERE REVISION.

DATE: 22FEB2001  
 DWN/DESSINE: NT.NGUYEN  
 CHK/VERIFIE: J.LAQUERBE  
 DATE: 27JUN2001  
 APVD/APPROUVE: S.KUGENER  
 DATE: 27JUN2001

NAME/TITRE: **STE** TE Connectivity

PRODUCT SPEC: 108-15315  
 SPEC. APPLICATION: -

WEIGHT/MASSE APPROX.: 1.80g

CUSTOMER DRAWING /PLAN CLIENT

SCALE/ECHELLE: 5:1

SHEET/FEUILLE: 1 OF 1

REV: D2

## X-ON Electronics

Largest Supplier of Electrical and Electronic Components

*Click to view similar products for [Automotive Connectors](#) category:*

*Click to view products by [TE Connectivity](#) manufacturer:*

Other Similar products are found below :

[003-018-000](#) [60403001](#) [60993906-B](#) [M902-2131](#) [M902-2161](#) [72.330.1035.1](#) [73.353.4028.0](#) [F119300-B](#) [F166900](#) [F258300-B](#) [F358300-B](#)  
[F407400](#) [F444110](#) [F487000](#) [F509500B-B](#) [827153-1](#) [8N1515-32-24P](#) [9-1326729-8](#) [925474-1](#) [928905-1](#) [964562-4](#) [968782-1](#) [GT17SA-8DS-](#)  
[HU](#) [98891-1012](#) [98947-1016](#) [12004147](#) [12004475-L](#) [12010290](#) [12010309-B](#) [12015454](#) [12020219-B](#) [12020308](#) [12041318-B](#) [12052225-L](#)  
[12052466](#) [12059125](#) [12064869](#) [12004327-B](#) [12010503-B](#) [12015308](#) [12015384](#) [12015909](#) [1-21030-1](#) [12041254](#) [12041318](#) [12047946-B](#)  
[12047957](#) [12047957-L](#) [12059473](#) [12066261](#)