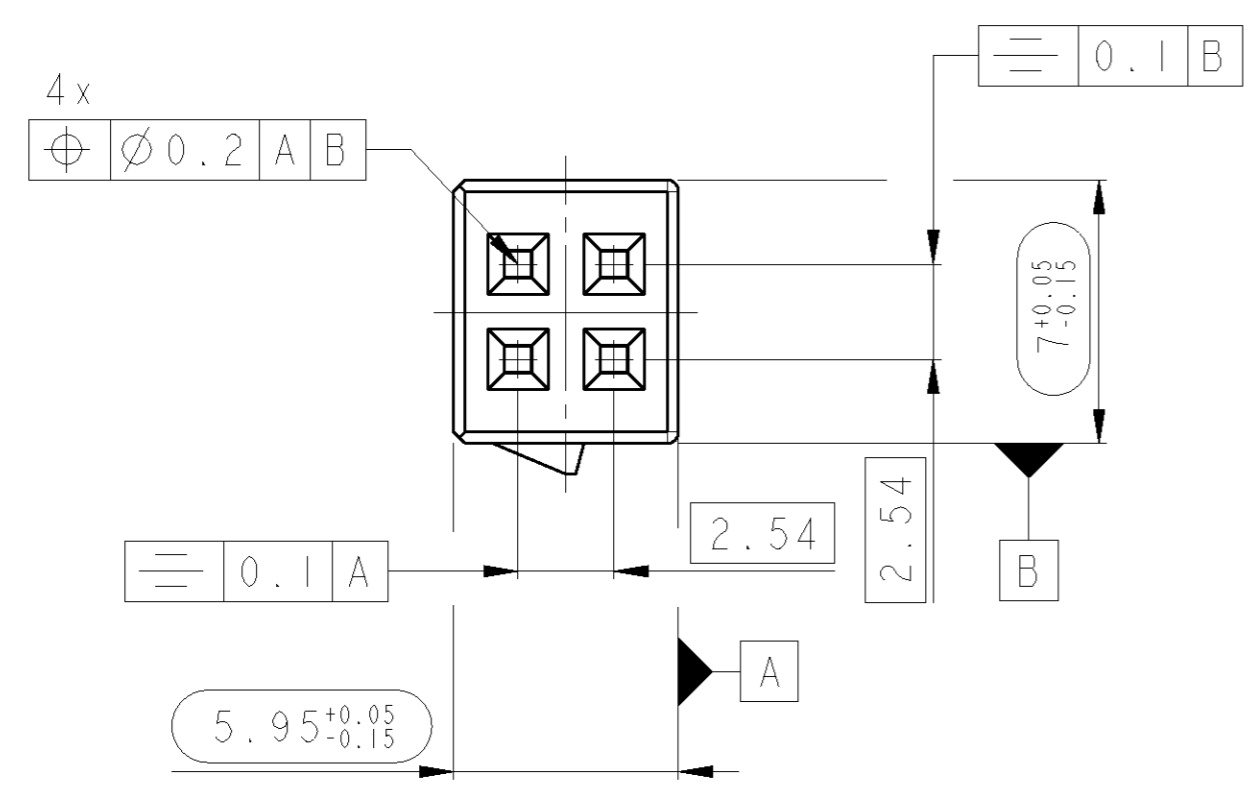


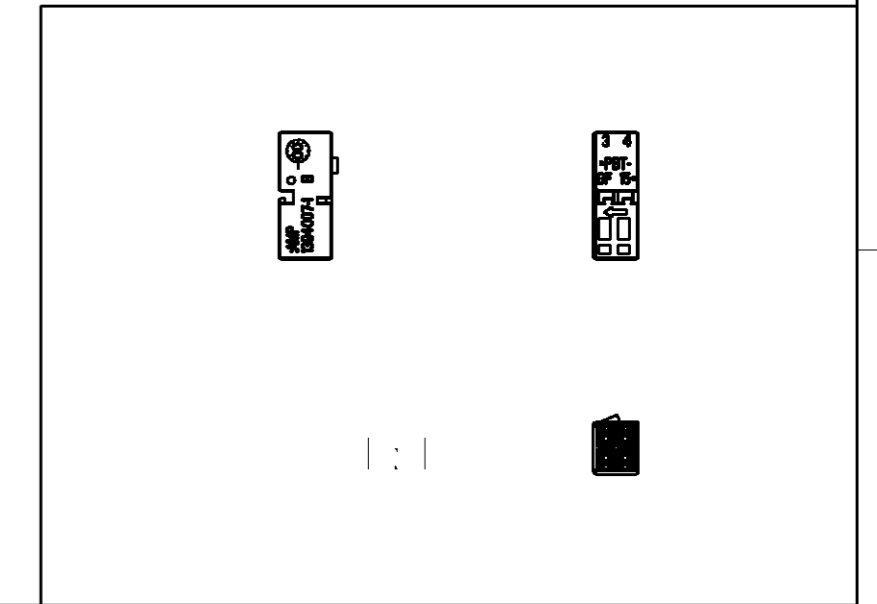
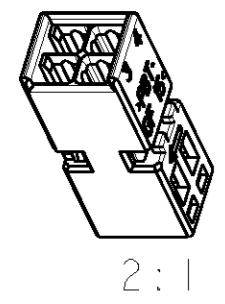
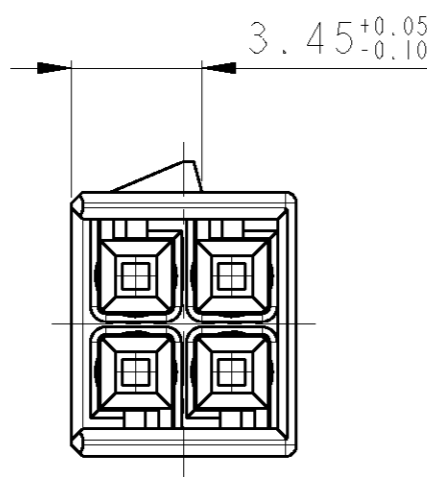
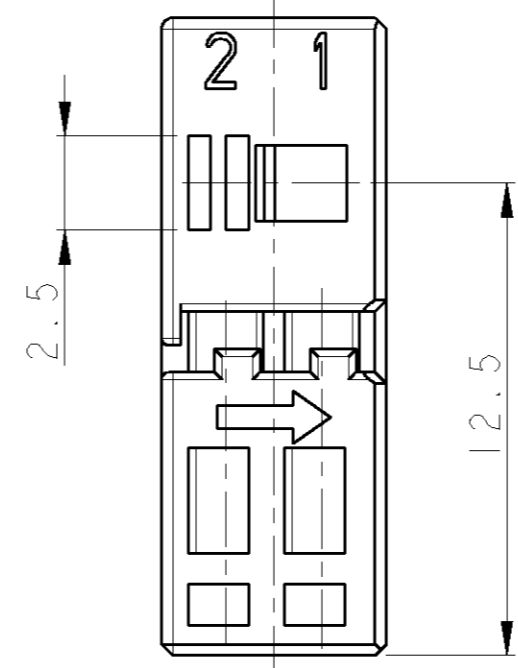
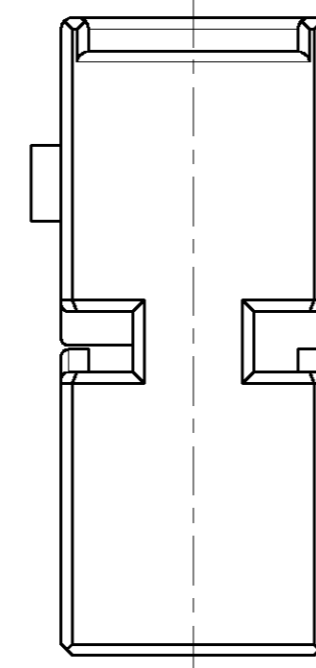
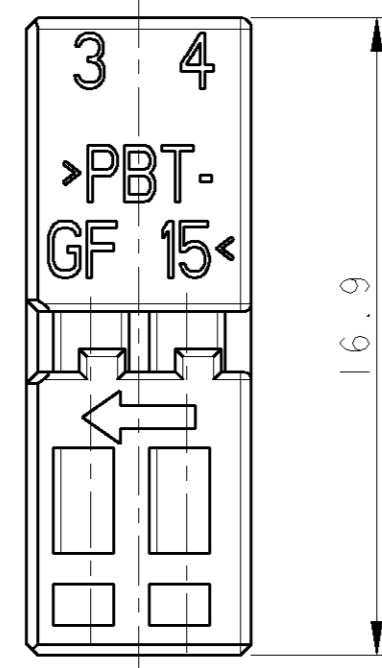
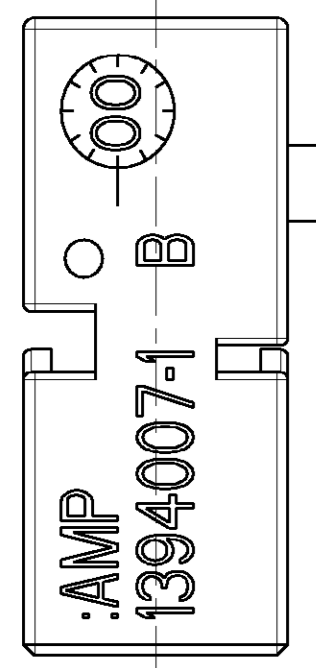
THIS DRAWING IS UNPUBLISHED. VERTRAULICHE UNVERÖFFENTLICHTE ZEICHNUNG. RELEASED FOR PUBLICATION FREI FUER VERÖFFENTLICHUNG. 2000. MATED WITH: PASSEND ZU: 1355639. BY TYCO ELECTRONICS CORPORATION. ALL RIGHTS RESERVED. ALLE RECHTE VORBEHALTEN. COPYRIGHT 2000.

LOC	DIST	REVISIONS					
A	-	P	LTR	DESCRIPTION	DATE	DWN	APVD
PROJEKT NR.: 95-52384			A	New Drawing	31JAN100	ASC	JWO
			B	Locking latch improved	17APR2001	ASC	JWO
			BI	Spec number added	03NOV2003	SBL	ASC



NOTES  
Bemerkungen

1. ONLY THE GERMAN-LANGUAGE VERSION SHALL BE BINDING  
Massgebend ist der deutsche Text
2. WIRE SIZE RANGE UNTIL 0,75mm<sup>2</sup>  
Drahtgrössenbereich bis 0,75mm<sup>2</sup>
3. DETAILS OF DESIGN ARE LEFT TO MANUFACTURER  
Einzelheiten der Ausführung bleiben dem Hersteller überlassen



AMP PART NO.	REV.	MATERIAL	SURFACE COLOR	DESCRIPTION	ITEM NO.
1394007-1	B	PBT-GF15	schwarz/BLACK	SOCKET HOUSING	1

DIMENSIONS: MASSEINHEITEN: mm		TOLERANCES UNLESS OTHERWISE SPECIFIED: ALLGEMEINTOLERANZEN DIN 16901-140	
0 PLC	±	1 PLC	±
2 PLC	±	3 PLC	±
4 PLC	±	ANGLES/WINKEL	±°
FINISH/OBERFLAECHE/FARBE		PBT-GF15	

DWN	A. Schroebe	10JAN2000
CHK	J. Woller	10JAN2000
APVD	-	-
PRODUCT SPEC	108-18214	
APPLICATION SPEC	114-18351	
WEIGHT	0.47g	
CUSTOMER DRAWING / KUNDENZEICHNUNG		

		tyco Electronics AMP GmbH	
		D - 64625 Bensheim	
NAME: MOS Buchsengehaeuse, 4polig MOS SOCKET HOUSING, 4POS.			
SIZE	A2	CAGE CODE	00779
DRAWING NO.	1394007	RESTRICTED TO	NUR FUER
SCALE	5:1	SHEET	OF
MATERIAL	REV	DATE	BY

## X-ON Electronics

Largest Supplier of Electrical and Electronic Components

*Click to view similar products for [Automotive Connectors](#) category:*

*Click to view products by [TE Connectivity](#) manufacturer:*

Other Similar products are found below :

[003-018-000](#) [60403001](#) [60993906-B](#) [M902-2131](#) [M902-2161](#) [72.330.1035.1](#) [73.353.4028.0](#) [F119300-B](#) [F166900](#) [F258300-B](#) [F358300-B](#)  
[F407400](#) [F444110](#) [F487000](#) [F509500B-B](#) [827153-1](#) [8N1515-32-24P](#) [9-1326729-8](#) [925474-1](#) [928905-1](#) [964562-4](#) [968782-1](#) [GT17SA-8DS-](#)  
[HU](#) [98891-1012](#) [98947-1016](#) [12004147](#) [12004475-L](#) [12010290](#) [12010309-B](#) [12015454](#) [12020219-B](#) [12020308](#) [12041318-B](#) [12052225-L](#)  
[12052466](#) [12059125](#) [12064869](#) [12004327-B](#) [12010503-B](#) [12015308](#) [12015384](#) [12015909](#) [1-21030-1](#) [12041254](#) [12041318](#) [12047946-B](#)  
[12047957](#) [12047957-L](#) [12059473](#) [12066261](#)