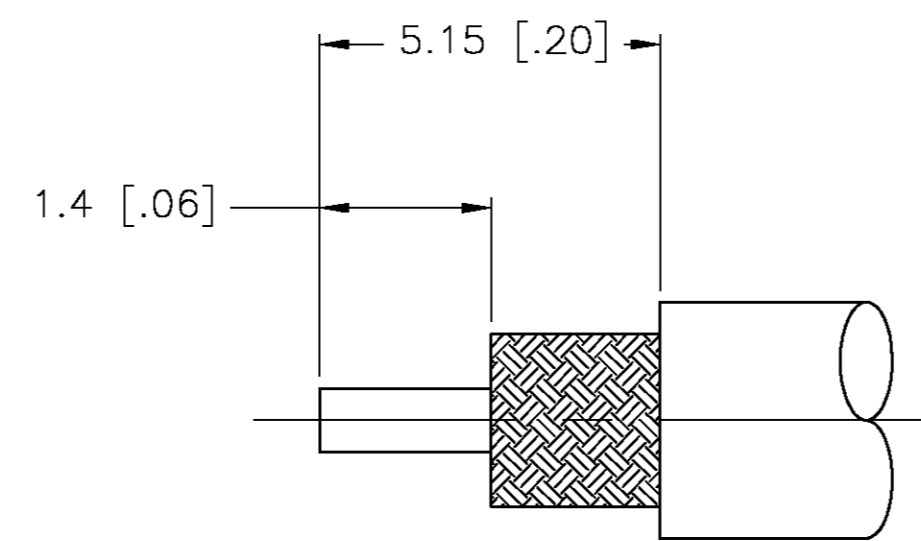
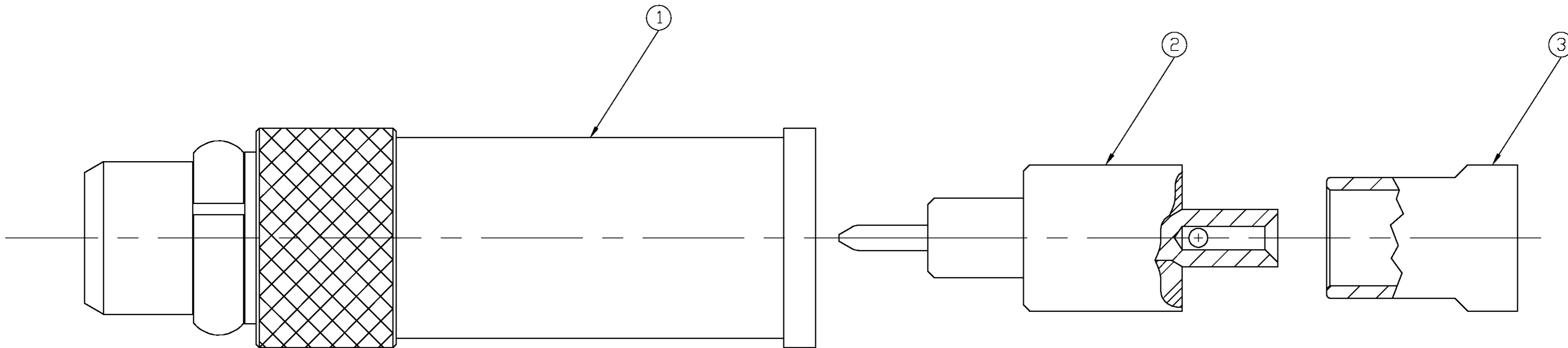


THIS DRAWING IS UNPUBLISHED. RELEASED FOR PUBLICATION
 © COPYRIGHT BY TYCO ELECTRONICS CORPORATION. ALL RIGHTS RESERVED.

LOC		DIST		REVISIONS			
P	LTR	DESCRIPTION	DATE	DWN	APVD		
AJ	-	E	REV PER 0514-0145-04	08APR04	KW	KW	



RECOMMENDED CABLE STRIP LENGTH (NTS)

- 1. ITEMS 1, 2, 3, AND 4 PACKAGED UNASSEMBLED
- ② CRIMP REQUIREMENTS: CENTER CONTACT .70 [.028] SQUARE
- ③ CRIMP REQUIREMENTS: HOUSING 2.67 [.105] HEX
- 4. ITEM 4 NOT SHOWN.

OMNIFLEX 200	1405671-2	1408216-4	1408218-1	1408217-1	1408148-2
RG-178 RG-196	---	1408216-2	1408218-1	1408217-1	1408148-1
CABLE CRIMP INFO	SHRINK TUBING ④	CABLE BUSHING ③	CONTACT ASSY ②	HOUSING ASSY ①	PART NUMBER

THIS DRAWING IS A CONTROLLED DOCUMENT.

DWN	RMF	04OCT01
CHK	RMF	04OCT01
APVD	RMF	04OCT01
PRODUCT SPEC	108-2084	
APPLICATION SPEC	408-8625	
WEIGHT	0.5GR/0.0180Z	A2
CUSTOMER DRAWING	SCALE 20:1	

tyco Electronics Tyco Electronics Corporation
Middletown, PA 17057

NAME: MMCX STRAIGHT CABLE PLUG, CRIMP ATTACHMENT

SIZE	CAGE CODE	DRAWING NO	RESTRICTED TO
A2	00779	C=1408148	-

SHEET 1 OF 1 REV E

1408148

X-ON Electronics

Largest Supplier of Electrical and Electronic Components

Click to view similar products for [RF Connectors](#) / [Coaxial Connectors](#) category:

Click to view products by [TE Connectivity](#) manufacturer:

Other Similar products are found below :

[8915-1511-000](#) [89674-0827](#) [6001-7071-019](#) [6002-7051-003](#) [6002-7551-202](#) [6059674-1](#) [619550-1](#) [630059-000](#) [M39030/3-01N](#) [6500-7071-046](#) [6769](#) [CX050L2AQ](#) [7002-1541-010](#) [7002-1542-011](#) [7004-1512-000](#) [7009-1511-004](#) [7010-1511-000](#) [7029-1511-060](#) [7101-1541-010](#) [7101-1571-002](#) [7145-1521-002](#) [7203-1571-003](#) [7209-1511-011](#) [7210-1511-015](#) [7210-1511-019](#) [73137-5015](#) [73216-2241](#) [73404-2300](#) [7405-1521-005](#) [7405-1521-802](#) [8527](#) [8547](#) [FS11V](#) [877931](#) [8808-1511-001](#) [9049-9513-000](#) [9074-9513-000](#) [9101-9573-002](#) [910A205F](#) [9130-9573-002](#) [PL11SC-026](#) [PL375-33](#) [PL40-5](#) [PL74C-221](#) [PL75MC-217](#) [PL803-7](#) [1200690078](#) [1-201144-1](#) [R107003010W](#) [R110A172100](#)