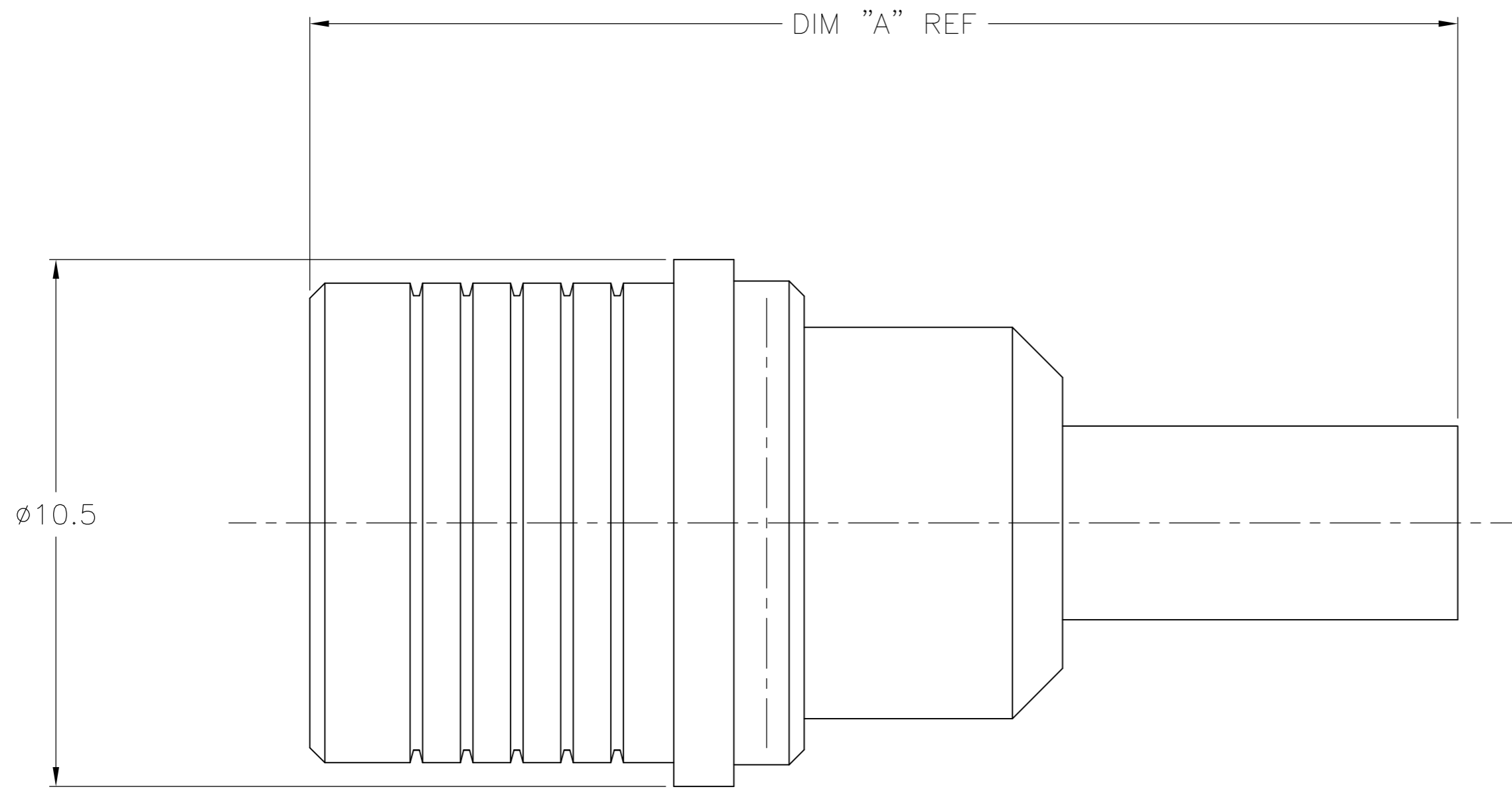
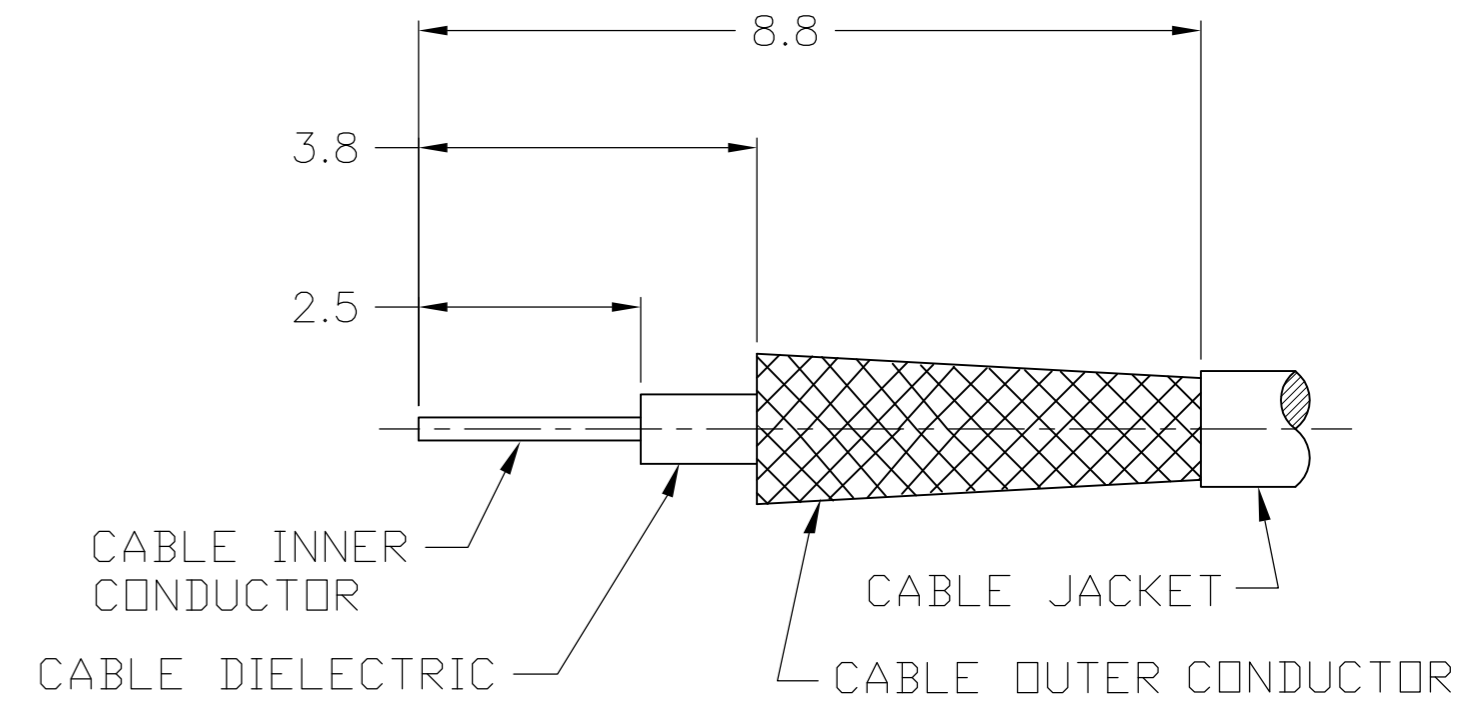


THIS DRAWING IS UNPUBLISHED. RELEASED FOR PUBLICATION
 © COPYRIGHT BY TYCO ELECTRONICS CORPORATION. ALL RIGHTS RESERVED.

LOC	DIST	REVISIONS			
P	LTR	DESCRIPTION	DATE	DWN	APVD
	C	REVISED PER ECO-08-000700	5FEB2008	DW	BW
	C1	REVISED PER ECO-09-024927	07NOV09	KK	AEG



CABLE PREPARATION
SCALE: NTS



1. CRIMP FERRULE USING CRIMP DIE HEX SIZE SPECIFIED IN TABLE.

2. SINGLE PACKED

3. BULK PACKED IN QUANTITIES OF 100

4. ASSEMBLE USING INSTRUCTION SHEET 408-8637

5. OBSOLETE PARTS: OBSOLETE CIS STREAMLINING PER D.RENAUD/D.SINISI

5	OBSOLETE	3	25.2	5.41	RG58/U, 141, 303 & SF142	1408456-2	9-446556-2	1408359-2	1408333-8
		2	25.2	5.41	RG58/U, 141, 303 & SF142	1408456-2	9-446556-2	1408359-2	1408333-7
5	OBSOLETE	3	25.2	5.41	RG55/U, 142, 223 & 400	1408456-2	2-1403102-5	1408359-2	1408333-6
5	OBSOLETE	2	25.2	5.41	RG55/U, 142, 223 & 400	1408456-2	2-1403102-5	1408359-2	1408333-5
5	OBSOLETE	3	22.9	3.83	RD316/U	1408354-2	2-413889-7	1408359-1	1408333-4
		2	22.9	3.83	RD316/U	1408354-2	2-413889-7	1408359-1	1408333-3
5	OBSOLETE	3	22.9	3.25	RG316/U, 174 & 188	1408354-2	2-413889-4	1408359-1	1408333-2
		2	22.9	3.25	RG316/U, 174 & 188	1408354-2	2-413889-4	1408359-1	1408333-1
	PACK	DIM A	HEX		CABLE	CONTACT	FERRULE	HSG ASSY	PART NO.

CENTER CONTACT	BRASS	GOLD
HOUSING	BRASS	NICKEL
FERRULE	COPPER OR BRASS	NICKEL
RELEASE RING	BRONZE	WHITE BRONZE
OUTER CONTACT	BERYLLIUM COPPER	NICKEL
DIELECTRIC	PTFE	N/A
COMPONENT	MATERIAL	FINISH

THIS DRAWING IS A CONTROLLED DOCUMENT.

DWN	D Cam	06NOV2001
CHK	RMF	12/18/02
APVD	D Cam	12/18/02
PRODUCT SPEC	108-2087	
APPLICATION SPEC	-	
WEIGHT	-	
CUSTOMER DRAWING	SCALE	10:1

Tyco Electronics Corporation
Harrisburg, PA 17105-3608

QMA STRAIGHT CABLE PLUG
CRIMP ATTACHMENT

SIZE	A2	CAGE CODE	00779	DRAWING NO	C=1408333	RESTRICTED TO	-
SHEET	1	OF 1	REV	C1			

X-ON Electronics

Largest Supplier of Electrical and Electronic Components

Click to view similar products for [RF Connectors / Coaxial Connectors](#) category:

Click to view products by [TE Connectivity](#) manufacturer:

Other Similar products are found below :

[8915-1511-000](#) [89674-0827](#) [6001-7071-019](#) [6002-7051-003](#) [6002-7551-202](#) [6059674-1](#) [619550-1](#) [630059-000](#) [M39030/3-01N](#) [6500-7071-046](#) [6769](#) [CX050L2AQ](#) [7002-1541-010](#) [7002-1542-011](#) [7004-1512-000](#) [7009-1511-004](#) [7010-1511-000](#) [7029-1511-060](#) [7101-1541-010](#) [7101-1571-002](#) [7145-1521-002](#) [7203-1571-003](#) [7209-1511-011](#) [7210-1511-015](#) [7210-1511-019](#) [73137-5015](#) [73216-2241](#) [73404-2300](#) [7405-1521-005](#) [7405-1521-802](#) [8527](#) [8547](#) [FS11V](#) [877931](#) [8808-1511-001](#) [9049-9513-000](#) [9074-9513-000](#) [9101-9573-002](#) [910A205F](#) [9130-9573-002](#) [PL11SC-026](#) [PL375-33](#) [PL40-5](#) [PL74C-221](#) [PL75MC-217](#) [PL803-7](#) [1200690078](#) [1-201144-1](#) [R107003010W](#) [R110A172100](#)