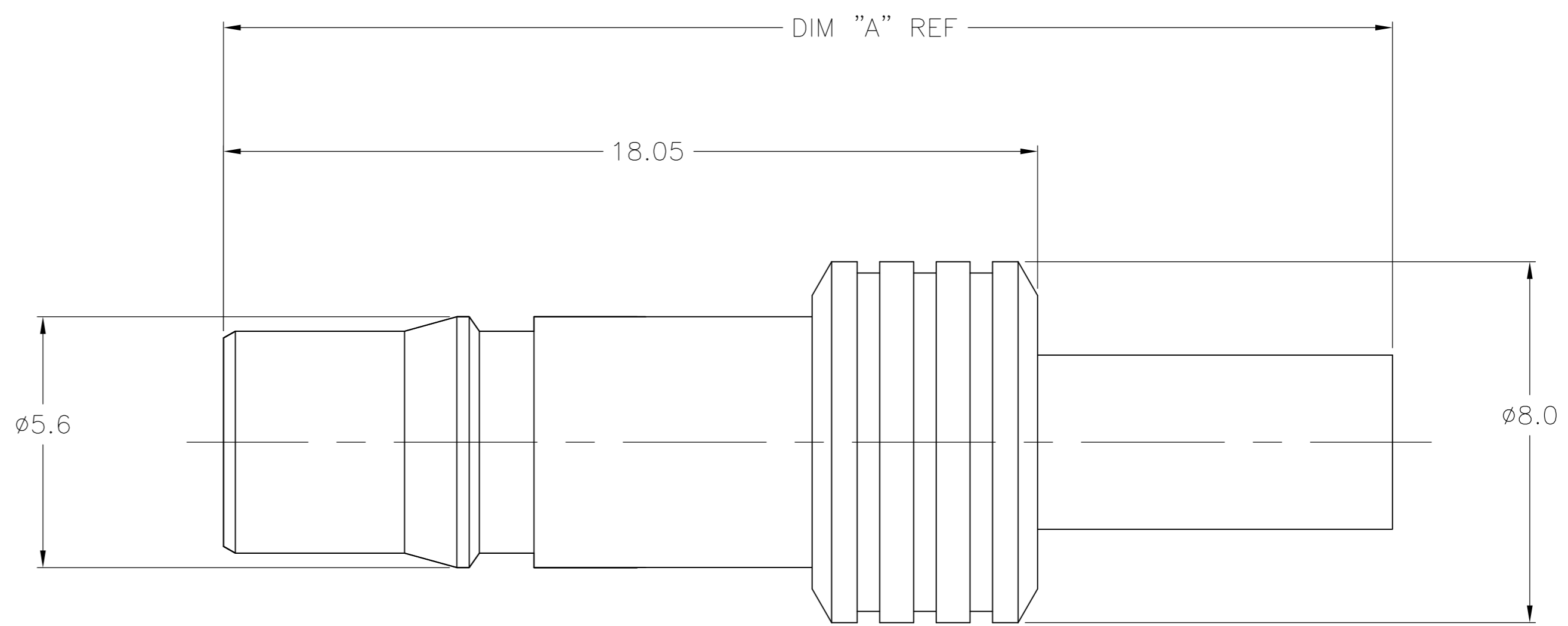


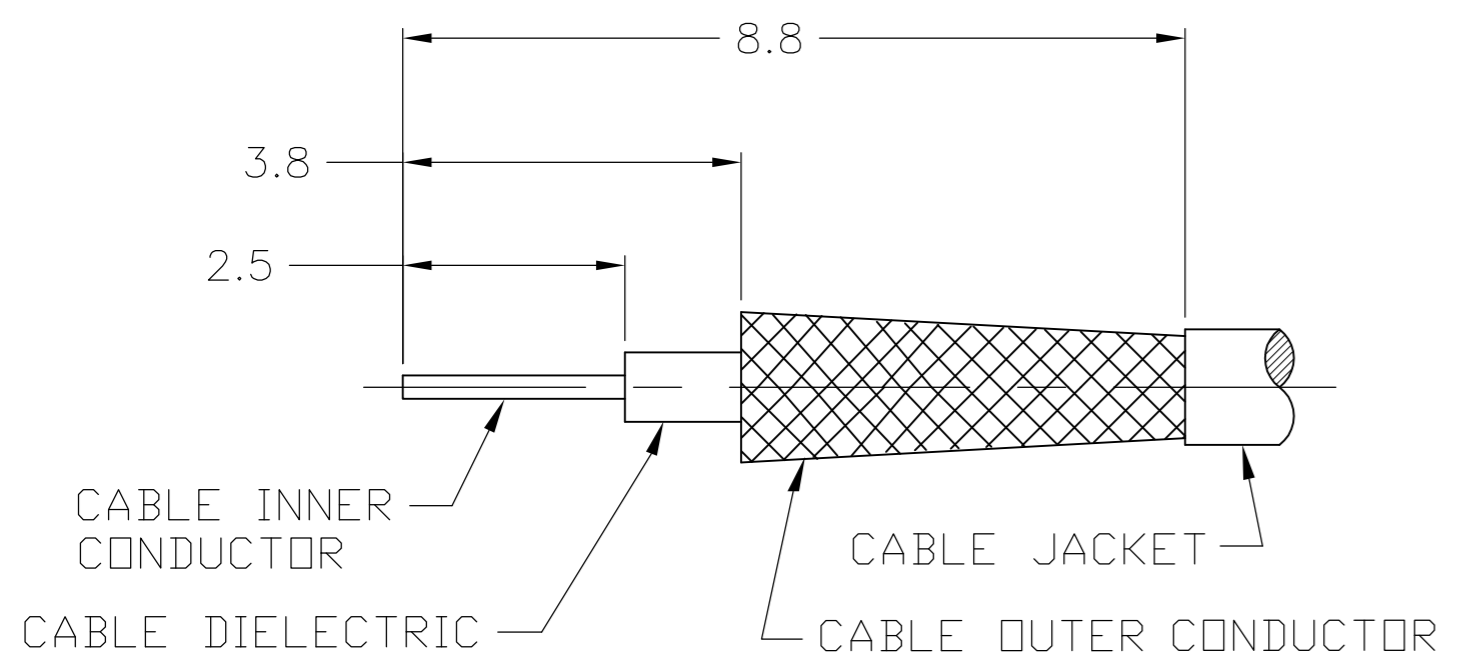
THIS DRAWING IS UNPUBLISHED. RELEASED FOR PUBLICATION  
 © COPYRIGHT - By - ALL RIGHTS RESERVED.

LOC		DIST		REVISIONS			
P	LTR	DESCRIPTION	DATE	DWN	APVD		
	AJ	16		A1	REVISED PER ECO-08-000700	2/5/2008	DW BW
				B	REVISED PER ECO-12-017046	09JUN13	AM MY

- 1. CRIMP FERRULE USING CRIMP DIE HEX SIZE SPECIFIED IN TABLE.
- 2. SINGLE PACKED
- 3. BULK PACKED IN QUANTITIES OF 100
- 4. ASSEMBLE TO CABLE USING IS SHEET 408-8900
- 5. OBSOLETE PARTS; OBSOLETE CIS STREAMLINING PER D.RENAUD/D.SINISI



CABLE PREPARATION SCALE: NTS



5	OBSOLETE	3	28.2	5.41	RG58/U, 141, 303 & SF142	1408411-8	9-446556-2	1408448-2	1408338-8
		2	28.2	5.41	RG58/U, 141, 303 & SF142	1408411-8	9-446556-2	1408448-2	1408338-7
		3	28.2	5.41	RG55/U, 142, 223 & 400	1408411-8	2-1403102-5	1408448-2	1408338-6
	5	2	28.2	5.41	RG55/U, 142, 223 & 400	1408411-8	2-1403102-5	1408448-2	1408338-5
	OBSOLETE	3	25.9	3.83	RD316/U	1408411-4	2-413889-7	1408448-1	1408338-4
		2	25.9	3.83	RD316/U	1408411-4	2-413889-7	1408448-1	1408338-3
		3	25.9	3.25	RG316/U, 174 & 188	1408411-4	2-413889-4	1408448-1	1408338-2
	OBSOLETE	2	25.9	3.25	RG316/U, 174 & 188	1408411-4	2-413889-4	1408448-1	1408338-1
		PACK	DIM A	HEX	CABLE	CONTACT	FERRULE	HSG ASSY	PART NO.

CENTER CONTACT	BERYLLIUM COPPER	GOLD
HOUSING	BRASS	NICKEL
FERRULE	COPPER OR BRASS	NICKEL
DIELECTRIC	PTFE	N/A
COMPONENT	MATERIAL	FINISH

THIS DRAWING IS A CONTROLLED DOCUMENT. DWN: DCam, 25SEP2002, CHK: -

DIMENSIONS: mm, TOLERANCES UNLESS OTHERWISE SPECIFIED: 0 PLC ± -, 1 PLC ± -, 2 PLC ± 0.10, 3 PLC ± -, 4 PLC ± -, ANGLES ± 1

APVD: DCam, 2/24/04, PRODUCT SPEC: 108-2087, APPLICATION SPEC: -

NAME: QMA STRAIGHT CABLE JACK CRIMP ATTACHMENT

SIZE: A2, CAGE CODE: 00779, DRAWING NO: 1408338, RESTRICTED TO: -

WEIGHT: -, SCALE: 10:1, SHEET: 1 of 1, REV: B

CUSTOMER DRAWING

1408338

A

## X-ON Electronics

Largest Supplier of Electrical and Electronic Components

*Click to view similar products for [RF Connectors / Coaxial Connectors](#) category:*

*Click to view products by [TE Connectivity](#) manufacturer:*

Other Similar products are found below :

[8915-1511-000](#) [89674-0827](#) [6001-7071-019](#) [6002-7051-003](#) [6002-7551-202](#) [6059674-1](#) [619550-1](#) [630059-000](#) [M39030/3-01N](#) [6500-7071-046](#) [6769](#) [CX050L2AQ](#) [7002-1541-010](#) [7002-1542-011](#) [7004-1512-000](#) [7009-1511-004](#) [7010-1511-000](#) [7029-1511-060](#) [7101-1541-010](#) [7101-1571-002](#) [7105-1521-002](#) [7145-1521-002](#) [7203-1571-003](#) [7209-1511-011](#) [7210-1511-015](#) [7210-1511-019](#) [73137-5015](#) [73216-2241](#) [73404-2300](#) [7405-1521-005](#) [7405-1521-802](#) [8527](#) [8547](#) [FS11V](#) [877931](#) [9049-9513-000](#) [9074-9513-000](#) [9101-9573-002](#) [910A205F](#) [9130-9573-002](#) [PL11SC-026](#) [PL375-33](#) [PL40-5](#) [PL74C-221](#) [PL75MC-217](#) [PL803-7](#) [1200690078](#) [1-201144-1](#) [R107003010W](#) [R110A172100](#)