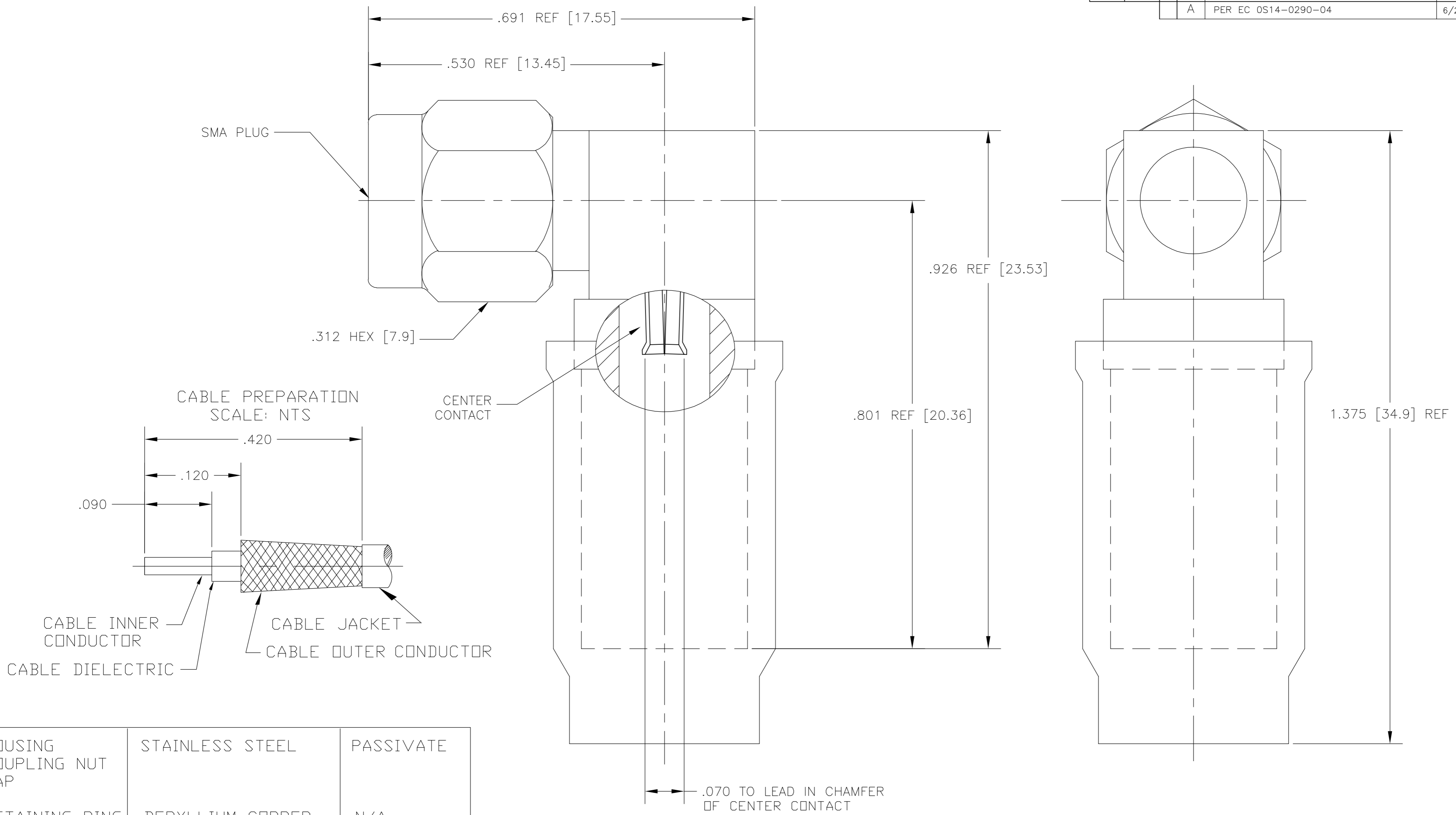


THIS DRAWING IS UNPUBLISHED. RELEASED FOR PUBLICATION
 © COPYRIGHT BY TYCO ELECTRONICS CORPORATION. ALL RIGHTS RESERVED.

LOC	DIST	REVISIONS					
HC	00	P	LTR	DESCRIPTION	DATE	DWN	APVD
		A		PER EC OS14-0290-04	6/28/04	-	DCam



HOUSING COUPLING NUT CAP	STAINLESS STEEL	PASSIVATE
RETAINING RING	BERYLLIUM COPPER	N/A
GASKET	SILICONE RUBBER	N/A
FERRULE	COPPER	NICKEL
CONTACT	BERYLLIUM COPPER	NICKEL
DIELECTRIC	PTFE	N/A
SHRINK TUBING	POLYOLEFIN COMPOUND	N/A
COMPONENT	MATERIAL	FINISH

NOTES:
 1. CRIMP FERRULE USING .255 [6.48] HEX CRIMP DIE.
 2. ASSEMBLE TO CABLE USING IS 408-8927

LMR 240	1-1403105-2	1403102-6	1408530-1	1408524-1
CABLE	SHRINK TUBING	FERRULE	HSG ASSY	PART NO.

THIS DRAWING IS A CONTROLLED DOCUMENT.

DIMENSIONS: INCHES [MM]	TOLERANCES UNLESS OTHERWISE SPECIFIED: 0 PLC ± - 1 PLC ± - 2 PLC ± - 3 PLC ± .005 4 PLC ± - ANGLES ± 1 FINISH -	DWN DCam CHK - APVD DCam PRODUCT SPEC - APPLICATION SPEC - WEIGHT - CUSTOMER DRAWING	12MAR2004 - 4/28/04 - - - -	NAME SMA RIGHT ANGLE CABLE PLUG CRIMP ATTACHMENT FOR LMR 240 CABLE	SIZE A2 CAGE CODE 00779 DRAWING NO. C=1408524 RESTRICTED TO -
----------------------------	--	--	---	--	--

Tyco Electronics Corporation
Norwood, MA 02062

SCALE 8:1 SHEET 1 OF 1 REV A

X-ON Electronics

Largest Supplier of Electrical and Electronic Components

Click to view similar products for [RF Connectors / Coaxial Connectors](#) category:

Click to view products by [TE Connectivity](#) manufacturer:

Other Similar products are found below :

[R125315120](#) [8915-1511-000](#) [89674-0827](#) [5916-1103-603](#) [0106-001-000](#) [6-0001-3](#) [6001-7071-019](#) [6002-7051-003](#) [6002-7551-202](#) [6059674-1](#) [619550-1](#) [630059-000](#) [M39012/25-0021](#) [M39012/79-3008](#) [M39030/3-01N](#) [M39030/3-03N](#) [M3933/25-29N](#) [M3933/25-36N](#) [6500-7071-046](#) [6501-1071-002](#) [M83723/72W24576](#) [M83723/72W2457N](#) [6769](#) [CX050L2AQ](#) [7002-1541-010](#) [7003-1572-002](#) [7004-1512-000](#) [7009-1511-004](#) [7010-1511-000](#) [7029-1511-060](#) [7101-1541-010](#) [7101-1571-002](#) [7105-1521-002](#) [7145-1521-002](#) [7209-1511-011](#) [7210-1511-012](#) [7210-1511-015](#) [7210-1511-019](#) [7210-1511-040](#) [7225-1512-050](#) [7242-1511-000](#) [73137-5015](#) [73216-2241](#) [73251-0111](#) [73251-0672](#) [73276-1501](#) [73366-0013](#) [73404-2300](#) [73413-6080](#) [734151610](#)