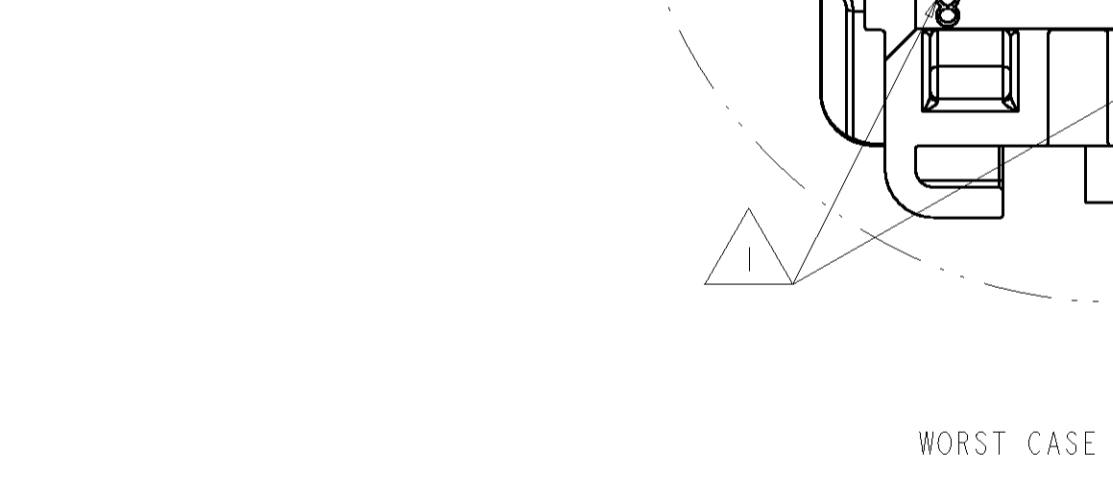
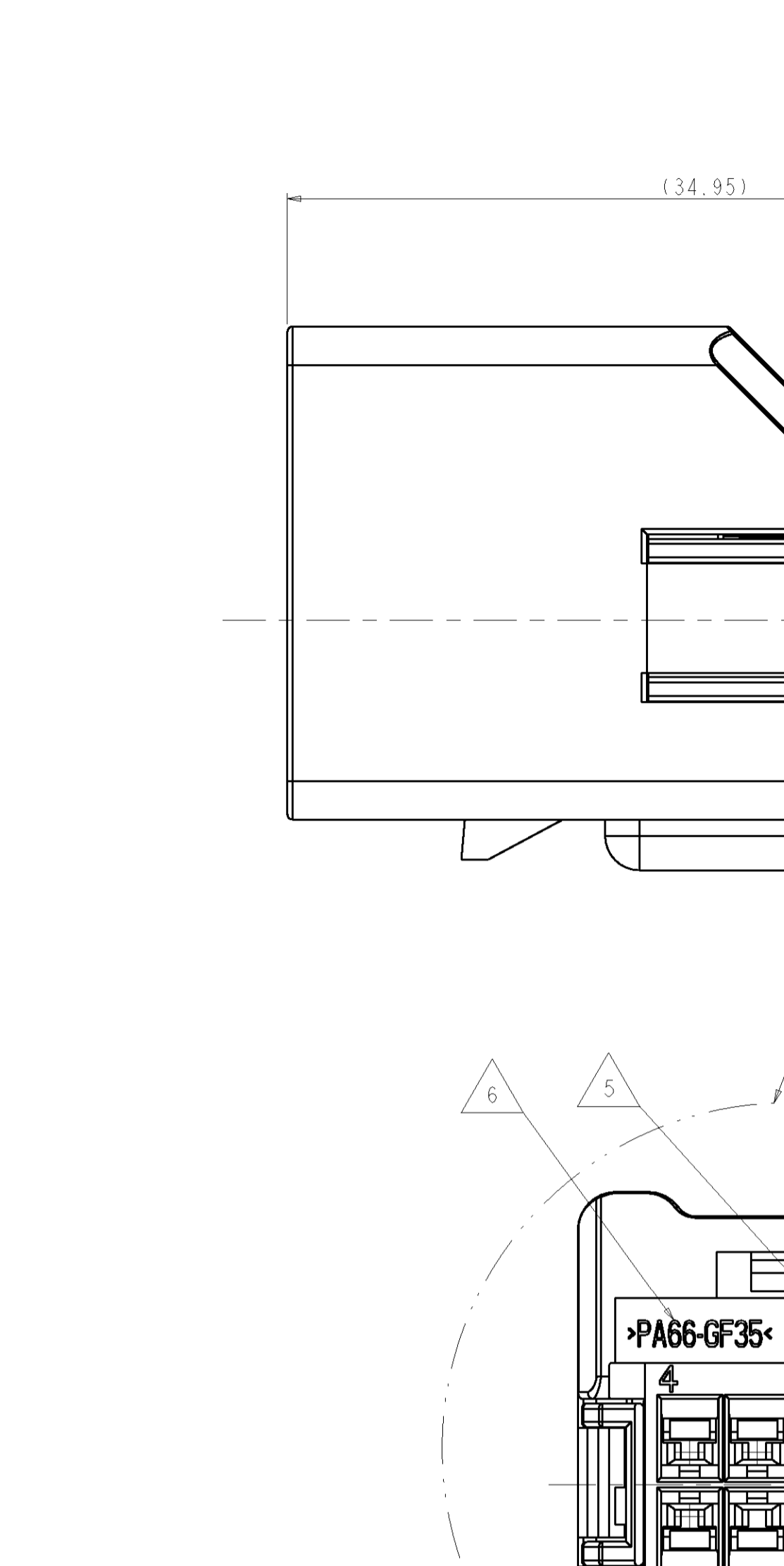


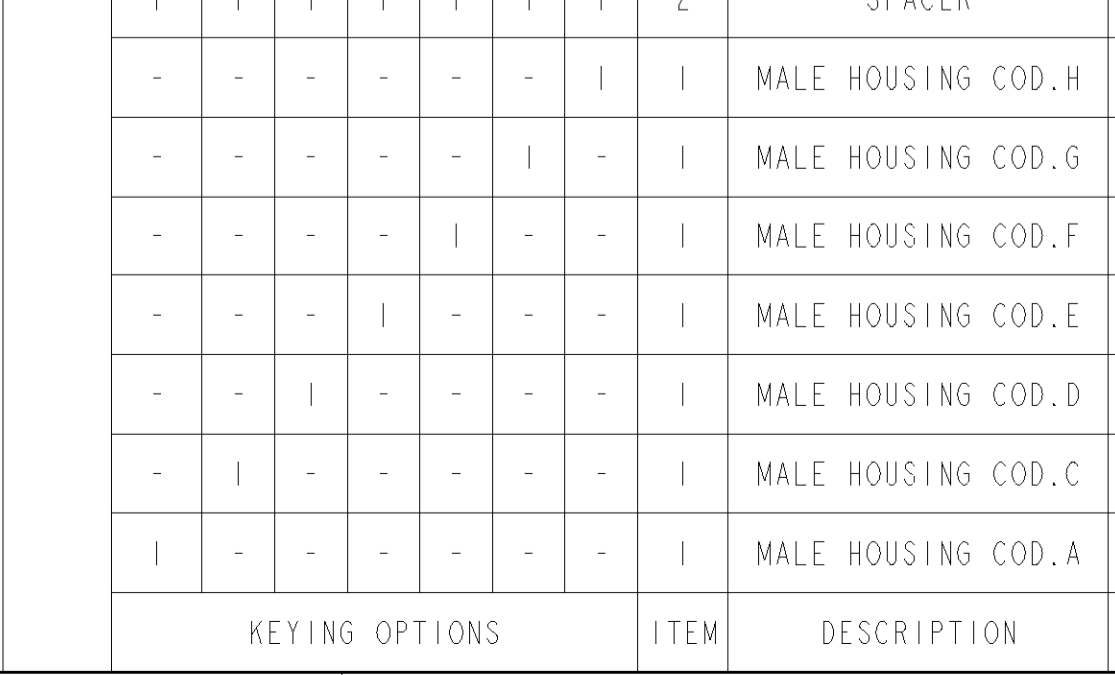
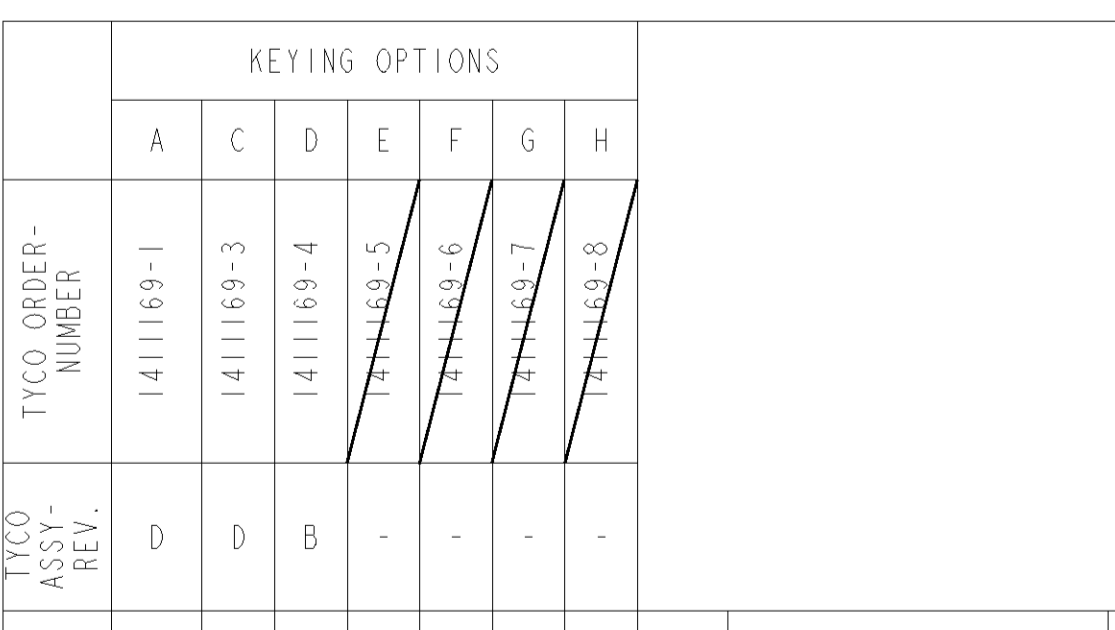
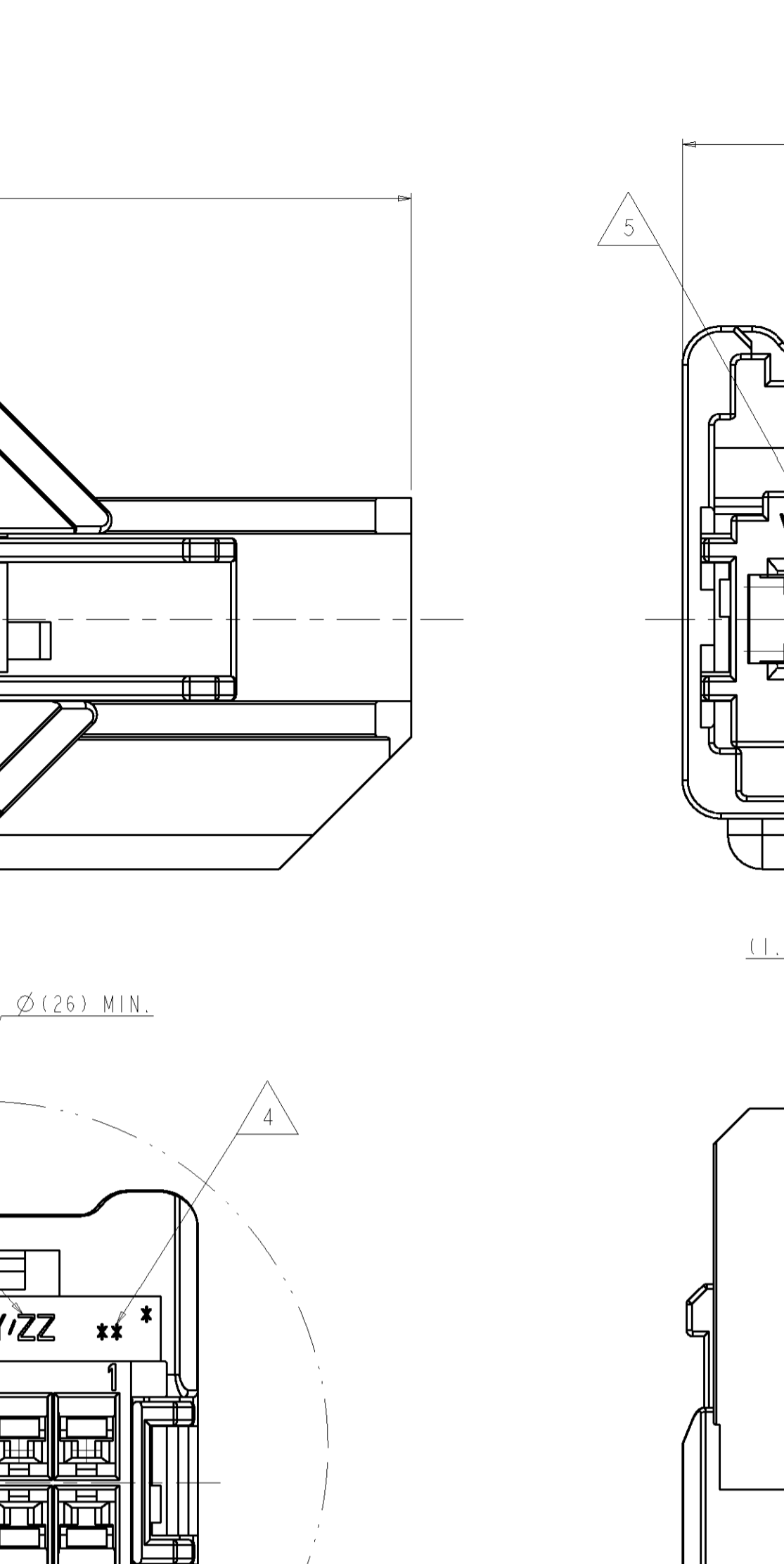
NOTE:

- 1 MOLD TERMINAL POSITION NUMBERS LOCATED AS SHOWN
- 2 DELIVERY CONDITION: SPACER IN PRE INSTALLED POSITION
- 3 PART NUMBER AND TRACEABILITY CODE
- 4 PRODUCT REVISION LEVEL OPTIONAL
- 5 TOOL NUMBER AND CAVITY NUMBER OPTIONAL
- 6 MATERIAL IDENTIFICATION
- 7 PACKING: CONNECTOR ASSEMBLIES TO BE BULK PACKED IN CARD BOARD BOX



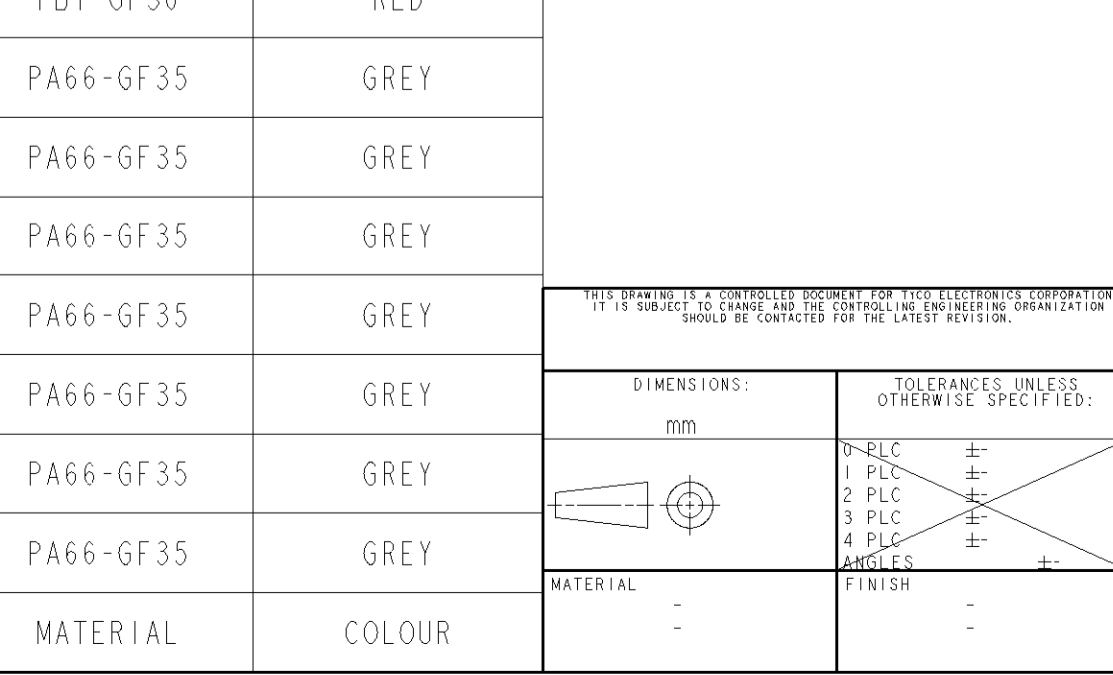
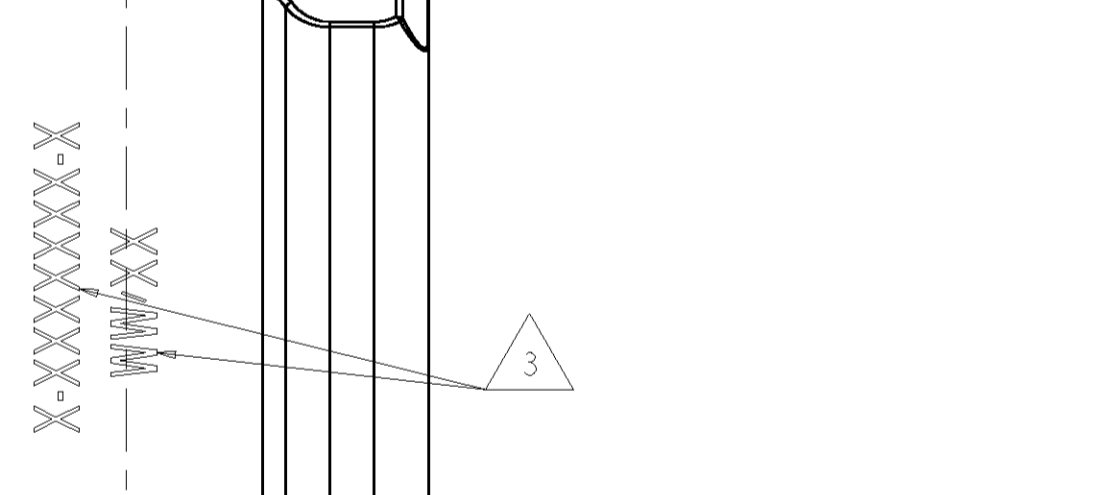
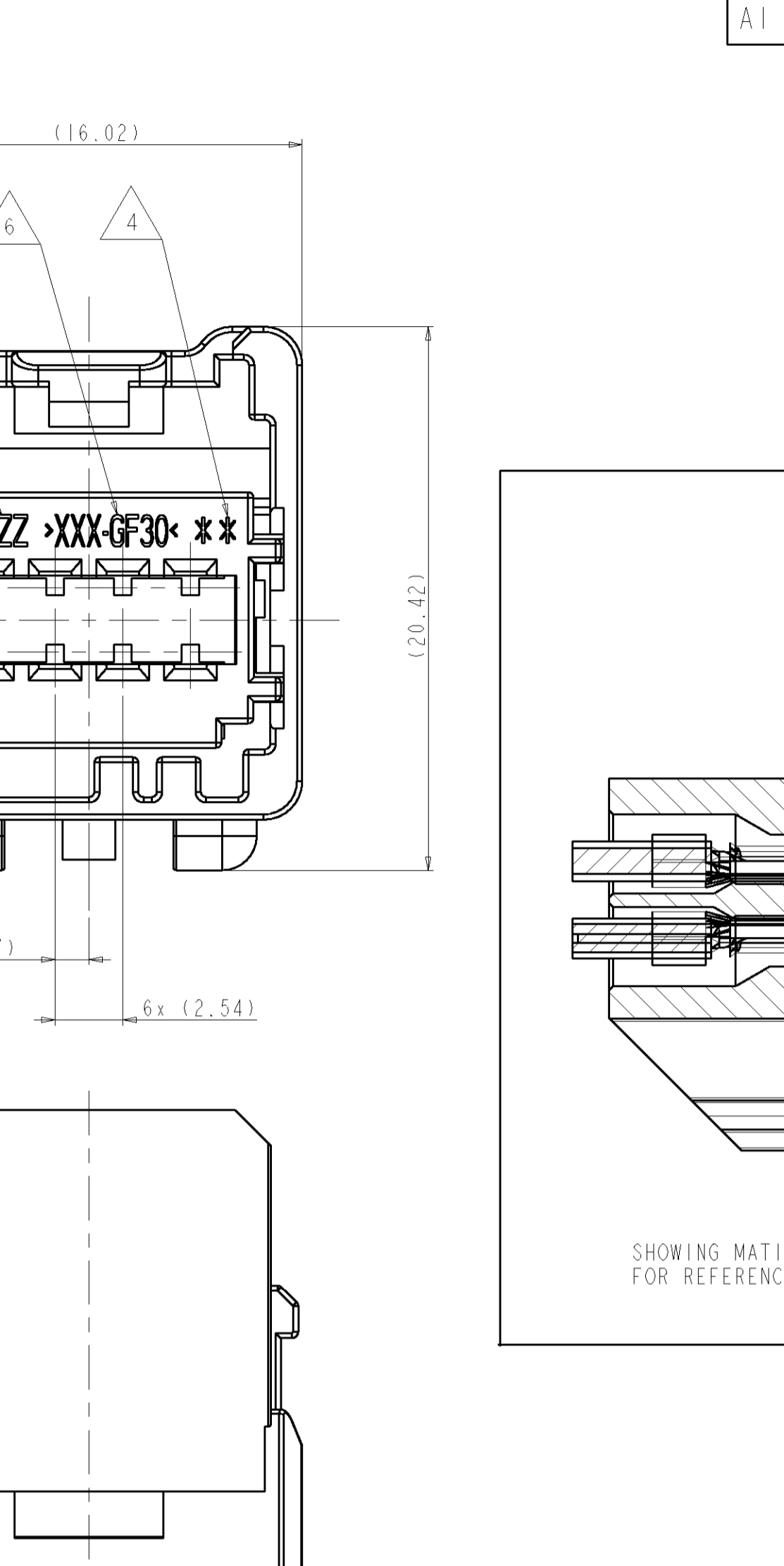
NOTE:

- 1 MOLD TERMINAL POSITION NUMBERS LOCATED AS SHOWN
- 2 DELIVERY CONDITION: SPACER IN PRE INSTALLED POSITION
- 3 PART NUMBER AND TRACEABILITY CODE
- 4 PRODUCT REVISION LEVEL OPTIONAL
- 5 TOOL NUMBER AND CAVITY NUMBER OPTIONAL
- 6 MATERIAL IDENTIFICATION
- 7 PACKING: CONNECTOR ASSEMBLIES TO BE BULK PACKED IN CARD BOARD BOX



NOTE:

- 1 MOLD TERMINAL POSITION NUMBERS LOCATED AS SHOWN
- 2 DELIVERY CONDITION: SPACER IN PRE INSTALLED POSITION
- 3 PART NUMBER AND TRACEABILITY CODE
- 4 PRODUCT REVISION LEVEL OPTIONAL
- 5 TOOL NUMBER AND CAVITY NUMBER OPTIONAL
- 6 MATERIAL IDENTIFICATION
- 7 PACKING: CONNECTOR ASSEMBLIES TO BE BULK PACKED IN CARD BOARD BOX



NOTE:

- 1 MOLD TERMINAL POSITION NUMBERS LOCATED AS SHOWN
- 2 DELIVERY CONDITION: SPACER IN PRE INSTALLED POSITION
- 3 PART NUMBER AND TRACEABILITY CODE
- 4 PRODUCT REVISION LEVEL OPTIONAL
- 5 TOOL NUMBER AND CAVITY NUMBER OPTIONAL
- 6 MATERIAL IDENTIFICATION
- 7 PACKING: CONNECTOR ASSEMBLIES TO BE BULK PACKED IN CARD BOARD BOX

LOC	DIST	REV	DESCRIPTION	DATE	DWN	APVD
A1	-	-	MATERIAL DEFINITION CORRECTED	29MAR2002	M.D	-
-	-	C	SEE PCN; EG00-2048-02-01	25JUN2002	M.D	-
-	-	C1	CODING D RELEASED; PCN EG00-4153-02-1	19DEC2002	MD	-
-	-	C2	COLOR OF HOUSING CORRECTED; ECR-05-014861	04NOV2005	CS	GS
-	-	D	SEE ECR-07-012410	25MAY2007	HM	GS

TYCO ORDER-NUMBER	KEYING OPTIONS	ITEM	DESCRIPTION	MATERIAL	COLOUR
1411169-1	A	2	SPACER	PBT-GF30	RED
1411169-3	C	1	MALE HOUSING COD.H	PA66-GF35	GREY
1411169-4	D	1	MALE HOUSING COD.G	PA66-GF35	GREY
1411169-5	E	1	MALE HOUSING COD.F	PA66-GF35	GREY
1411169-6	F	1	MALE HOUSING COD.E	PA66-GF35	GREY
1411169-7	G	1	MALE HOUSING COD.D	PA66-GF35	GREY
1411169-8	H	1	MALE HOUSING COD.C	PA66-GF35	GREY
1411169-1	A	1	MALE HOUSING COD.A	PA66-GF35	GREY



KEYING OPTION C IS SHOWN

DIMENSIONS: mm 	TOLERANCES UNLESS OTHERWISE SPECIFIED: 0-ELC ± 1-PLC ± 2-PLC ± 3-PLC ± 4-PLC ± ANGLES ± FINISH -	DWN: R. STUBBE 24MAR2002 CHK: G. STEINBACH 29APR2002 APVD: - NAME: - PRODUCT SPEC: - APPLICATION SPEC: - WEIGHT: - CUSTOMER DRAWING: -	Tyco Electronics Harrisburg, PA 17105-3608 PRODUCT NAME: 2X4 POS. GET MALE CONNECTOR; UNSEALED ASSEMBLY SIZE: A1 CAGE CODE: 00779 DRAWING NO: C=1411169 SCALE: 5:1 SHEET: 1 OF 1 REV: D
-----------------------	---	---	---

X-ON Electronics

Largest Supplier of Electrical and Electronic Components

Click to view similar products for [Automotive Connectors](#) category:

Click to view products by [TE Connectivity](#) manufacturer:

Other Similar products are found below :

[003-018-000](#) [60403001](#) [60993906-B](#) [M902-2131](#) [M902-2161](#) [72.330.1035.1](#) [73.353.4028.0](#) [F119300-B](#) [F166900](#) [F258300-B](#) [F358300-B](#)
[F407400](#) [F444110](#) [F487000](#) [F509500B-B](#) [827153-1](#) [8N1515-32-24P](#) [9-1326729-8](#) [925474-1](#) [928905-1](#) [964562-4](#) [968782-1](#) [GT17SA-8DS-](#)
[HU](#) [98891-1012](#) [98947-1016](#) [12004147](#) [12004475-L](#) [12010290](#) [12010309-B](#) [12015454](#) [12020219-B](#) [12020308](#) [12041318-B](#) [12052225-L](#)
[12052466](#) [12059125](#) [12064869](#) [12004327-B](#) [12010503-B](#) [12015308](#) [12015384](#) [12015909](#) [1-21030-1](#) [12041254](#) [12041318](#) [12047946-B](#)
[12047957](#) [12047957-L](#) [12059473](#) [12066261](#)