

THIS DRAWING IS UNPUBLISHED.

RELEASED FOR PUBLICATION

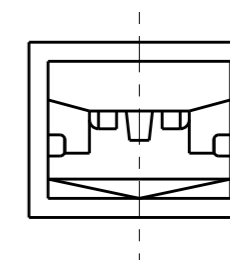
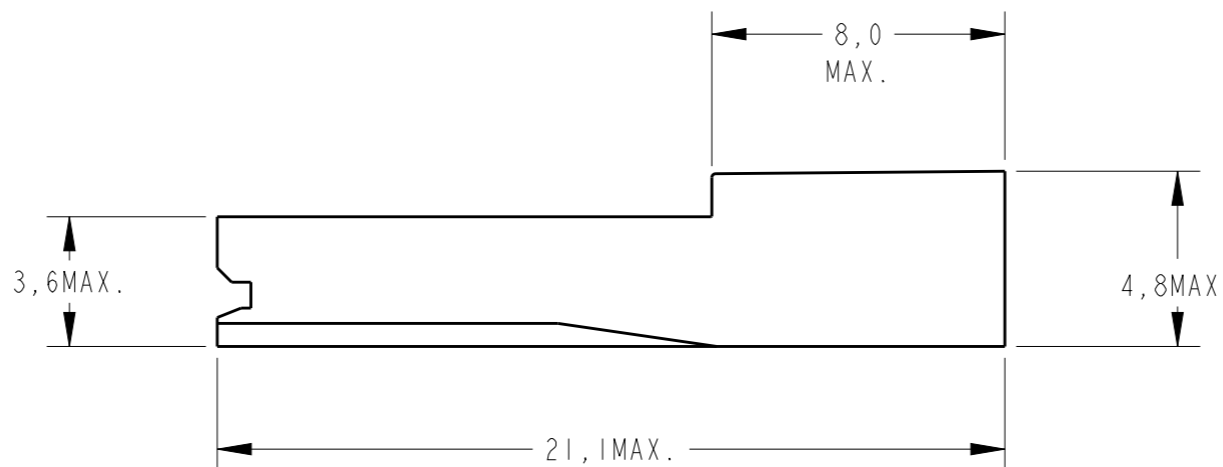
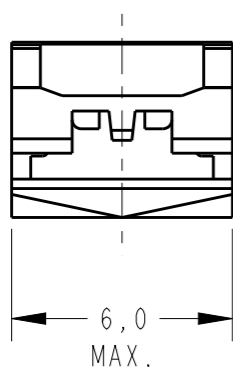
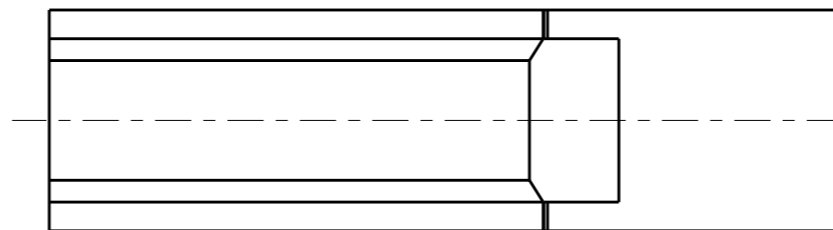
20

© COPYRIGHT 20 BY -


ALL RIGHTS RESERVED.


REVISIONS

P	LTR	DESCRIPTION	DATE	DWN	APVD
F1		REV. BY ECO 16-003733	11MAR2016	HC	WLS
F2		REV. BY ECO 18-012656	12AUG2018	HC	WLS
G		REVISED PER ECO-19-015171	08OCT2019	WLS	WLS



 -MÁTERIA PRIMA CONFORME ESPECIFICAÇÃO IEC 60335-1, GWT 750°, SEM CHAMA.
RAW MATERIAL ACC. TO SPEC IEC 60335-1, GWT 750°C, WITHOUT FLAME.

FINISH	MATERIAL	PART NUMBER
NATURAL	 - PA 6.6 V-0	141628-5
PRETO / BLACK	PBT - TEMPERATURE RESISTANT	141628-4
OBSOLETE	AMARELO / YELLOW	PA 6.6 94 V2
		141628-3
	NATURAL	PA 6.6 94 V2
		141628-2
OBSOLETE	NATURAL	PA 6.6 94 V1
		141628-1

THIS DRAWING IS A CONTROLLED DOCUMENT.		DWN H.C. CANTER 29 JAN 2016	 TE Connectivity	
DIMENSIONS: mm		CHK W.L. STEFANI 29 JAN 2016		
TOLERANCES UNLESS OTHERWISE SPECIFIED:		APVD - 29 JAN 2016	NAME FASTON REC. HSG. .110 SERIES	
0 PLC ±-	1 PLC ±0,3	PRODUCT SPEC 108-37094	SIZE A3	CAGE CODE -
2 PLC ±-	3 PLC ±-	APPLICATION SPEC -	DRAWING NO C-141628	RESTRICTED TO -
4 PLC ±-	ANGLES ±-	WEIGHT -	SCALE 5:1	
MATERIAL -	FINISH -	CUSTOMER DRAWING	SHEET 1 OF 1	
			REV G	

X-ON Electronics

Largest Supplier of Electrical and Electronic Components

Click to view similar products for [Terminals](#) category:

Click to view products by [TE Connectivity](#) manufacturer:

Other Similar products are found below :

[00-054007-01074-6](#) [00-054007-70206-1](#) [00-054007-70210-8](#) [00-054007-70217-7](#) [00-054007-70226-9](#) [00-054007-70228-3](#) [00-054007-70248-1](#) [00-054007-70256-6](#) [00-054007-70301-3](#) [00-054007-70316-7](#) [00-054007-49560-4](#) [00-054007-70209-2](#) [00-054007-70225-2](#) [00-054007-70227-6](#) [00-054007-70231-3](#) [00-054007-70241-2](#) [00-054007-70242-9](#) [00-054007-70244-3](#) [00-054007-70246-7](#) [00-054007-70263-4](#) [00-054007-70288-7](#) [00-054007-70290-0](#) [00-054007-70300-6](#) [00-054007-70304-4](#) [01-2065-1-0216](#) [01-2900-1-04412](#) [00581P0075](#) [600TS-10](#) [60205-1](#) [604200-1](#) [605601-1](#) [60598-1-CUT-TAPE](#) [61314-6-C](#) [61810-3](#) [61-S](#) [61-SN](#) [626-0194](#) [62-NBM-A](#) [62-SN](#) [62-SP](#) [63-S](#) [640179-1](#) [M55155/059I03](#) [M55155/079C01](#) [M55155/099H02](#) [M55155/109H01](#) [M55155/109H02](#) [M55155/12XH05](#) [M55155/16XH02](#) [M55155/29-5S](#)