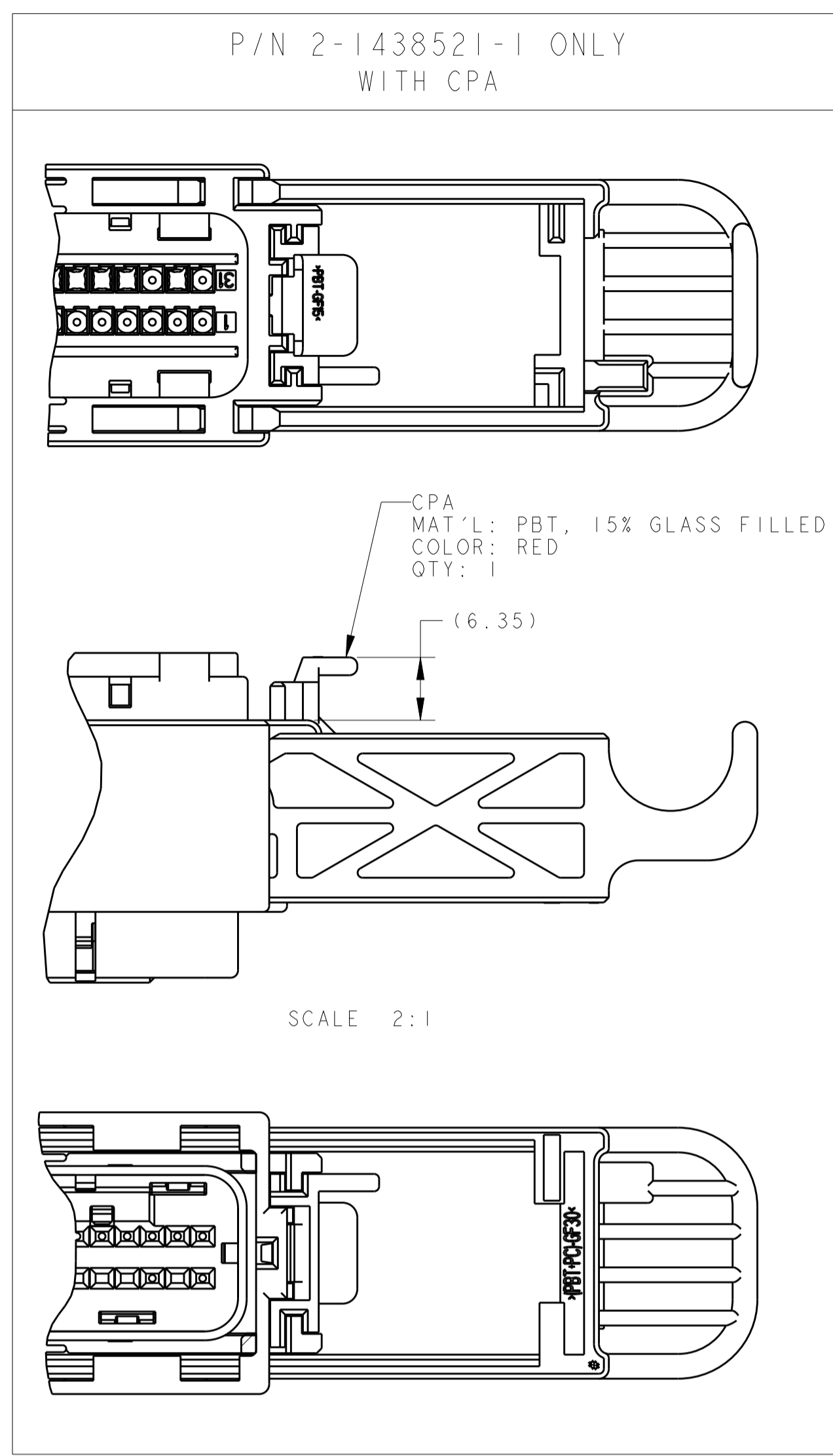
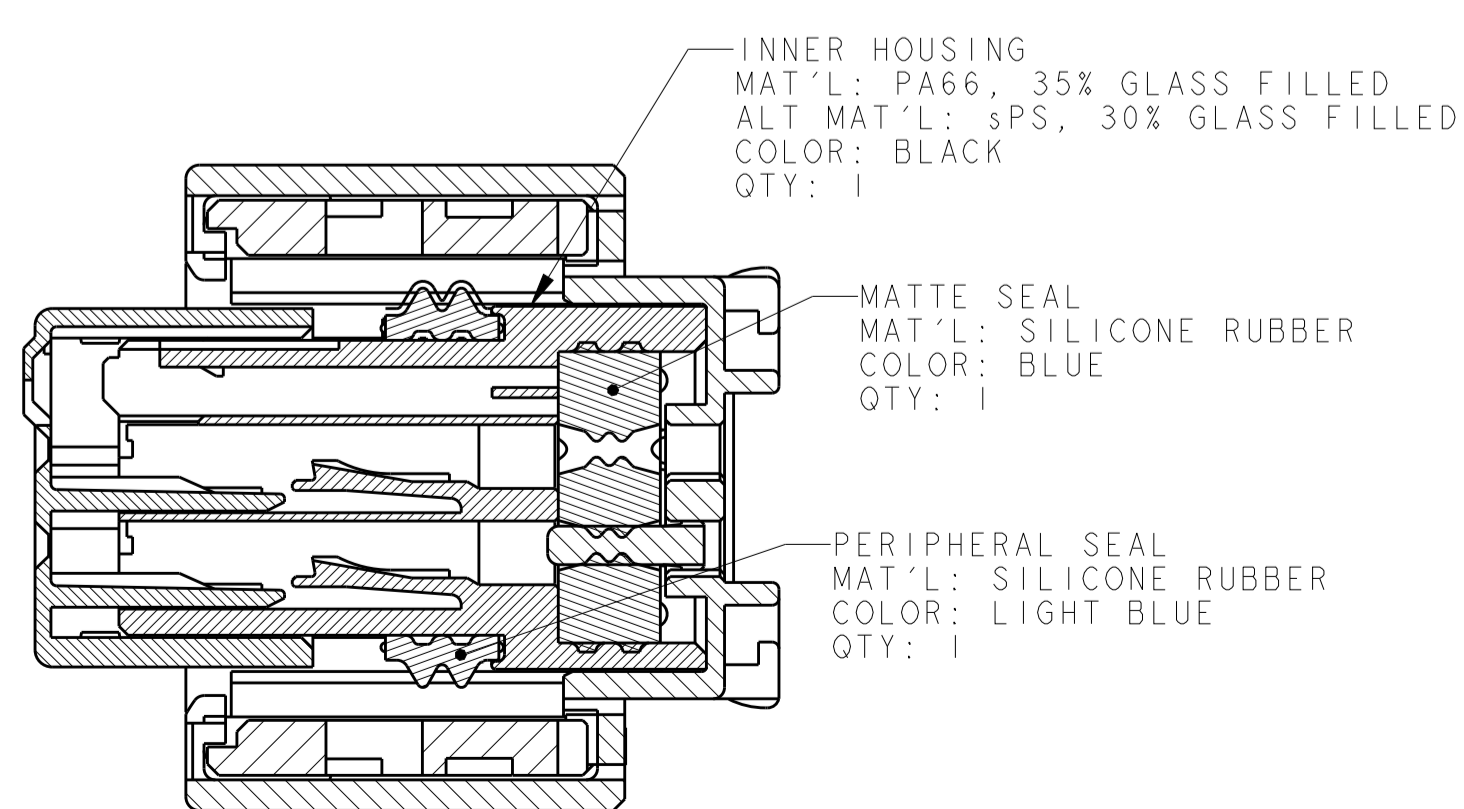
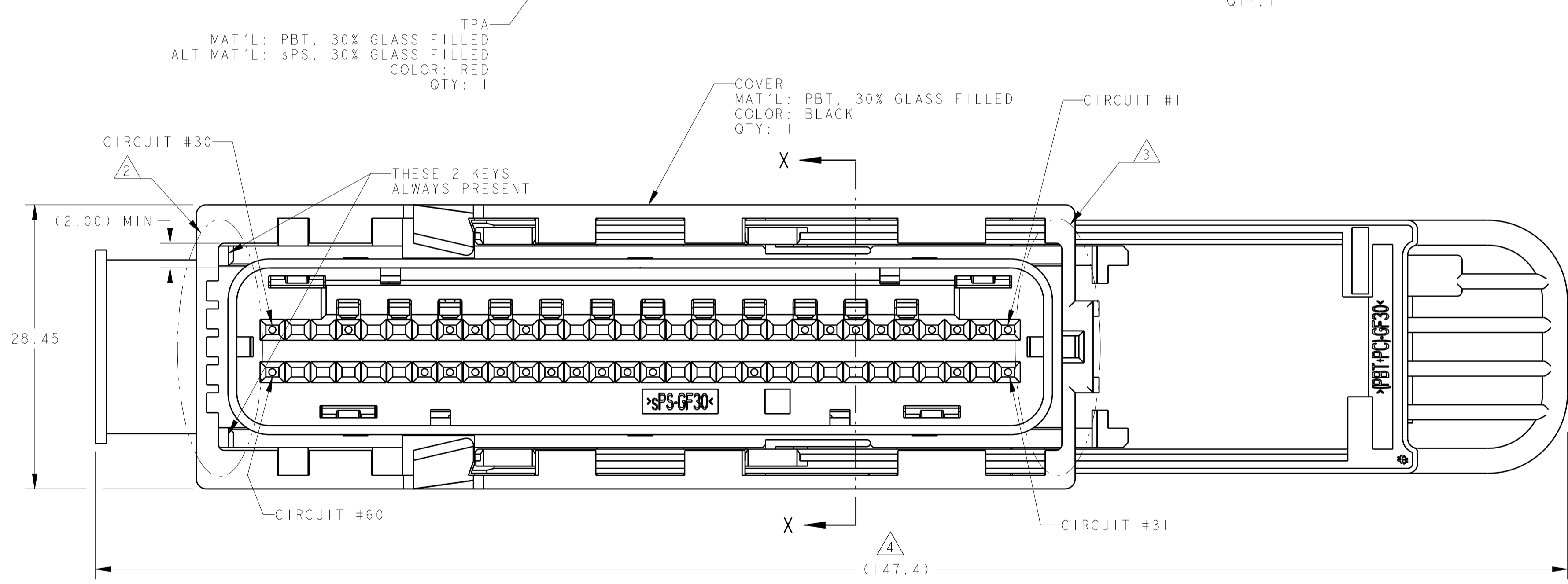
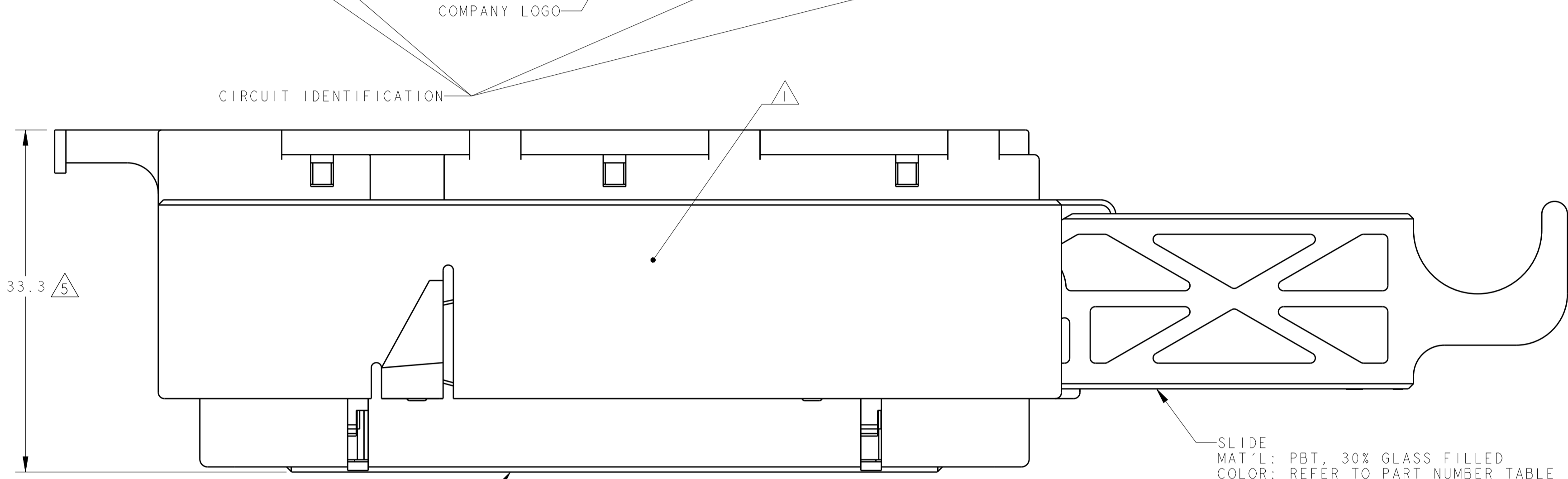
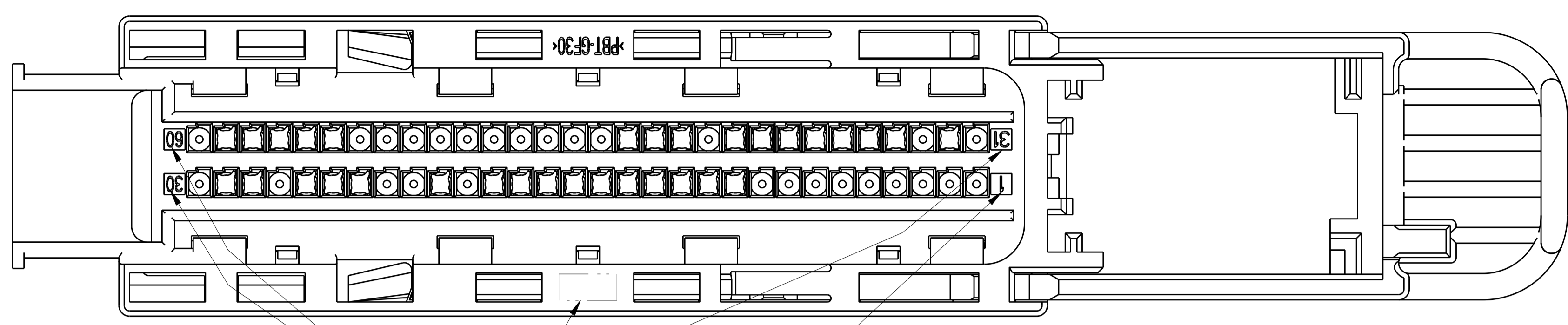


REVISIONS				
P.	LTN.	DESCRIPTION	DATE	APP'D.
E7		REVISED PER ECO-16-007761	20MAY2016	DLD WEM
E8		REVISED PER ECO-17-006621	09MAY2017	DLD WEM
E9		REVISED PER ECO-20-012412	08SEP2020	AP HDC



- 1. TE CONNECTIVITY (TE) PART NUMBER AND JULIAN DATE CODE MARKED ON THIS SIDE.
- 2. KEYING ARRANGEMENT TABLE FOR KEYWAY LOCATIONS, SEE SHEET 2.
- 3. KEYING ARRANGEMENT TABLE FOR KEY LOCATIONS, SEE SHEET 2.
- 4. SLIDE SHOWN IN UNLOCKED POSITION.
- 5. TPA SHOWN IN UNLOCKED POSITION.
- 6. MISCELLANEOUS COMPONENT ENGAGE/DISENGAGE FORCE, SAE/USCAR-2, SECTION 5.4.4.4. TPA (PRE-SET TO FULL) FORCES (15 TO 55 NEWTONS)
- 7. APPLICABLE TE GET FEMALE TERMINALS:
FOR 0.22/0.35 WIRE SECTION,
TERMINAL PART NUMBER 1393364-2 (GOLD)
FOR 0.50/0.75 WIRE SECTION,
TERMINAL PART NUMBER 1393365-2 (GOLD)
FOR 0.22/0.35 WIRE SECTION,
TERMINAL PART NUMBER 1393367-1 (TIN)
FOR 0.50/0.75 WIRE SECTION,
TERMINAL PART NUMBER 1393366-1 (TIN)
- 8. REFER TO POGO PIN FOR GET SOCKET TERMINAL ON TE DRAWING #114-18411 FOR CONTINUITY TESTING.
- 9. NOT FOR PRODUCTION USE.
- 10. CPA ASSEMBLED IN UNLOCKED POSITION.

9	SLIDE COLOR	CIRCUIT ARRANGEMENT (SEE TABLE ON SHEET 2)	KEYING ARRANGEMENT (SEE TABLE ON SHEET 2)	PART NUMBER
	BLACK	C3	K99	9-1438521-8
	BLACK	C143	K1	2-1438521-8
	BLACK	C142	K1	2-1438521-7
	BLACK	C141	K1	2-1438521-6
	BLACK	C140	K1	2-1438521-5
	BLACK	C139	K1	2-1438521-4
	BLACK	C138	K1	2-1438521-2
	BLACK	C137	K1	2-1438521-1
	BLACK	C136	K1	2-1438521-0
	BLACK	C132	K1	1-1438521-7
	BLACK	C131	K1	1-1438521-6
	BLACK	C129	K1	1-1438521-5
	BLACK	C128	K1	1-1438521-4
	BLACK	C127	K1	1-1438521-3
	BLACK	C122	K1	1-1438521-2
	BLACK	C115	K1	1-1438521-1
	BLACK	C109	K1	1-1438521-0
OBSOLETE	BLACK	C108	K1	1-1438521-9
	BLACK	C107	K1	1438521-8
OBSOLETE	GRAY	C75	K1	1438521-7
OBSOLETE	BLACK	C74	K1	1438521-6
	BLACK	C73	K1	1438521-5
	BLACK	C62	K1	1438521-4
	BLACK	C61	K1	1438521-3
	BLACK	C49	K1	1438521-2
	BLACK	C3	K1	1438521-1

SEE SHEET 2 FOR HEADER INTERFACE SPECIFICATION AND SHEET 3 FOR KEYING AND CIRCUIT ARRANGEMENTS

THIS DRAWING IS A CONTROLLED DOCUMENT.

OWN: DL DRUMMOND 11FEB2005
CHK: AJ VALASEK 11FEB2005
APP'D: AJ VALASEK 11FEB2005

DIMENSIONS: mm
TOLERANCES UNLESS OTHERWISE SPECIFIED:
0 PLC ±0.5
1 PLC ±0.5
2 PLC ±0.20
3 PLC ±0.20
4 PLC ±0.20
ANGLES ±0.5

MATERIAL: SEE CALLOUT
FINISH: SEE CALLOUT

APPLICATION SPEC: 114-13060
WEIGHT: 1.14-13060
CUSTOMER DRAWING

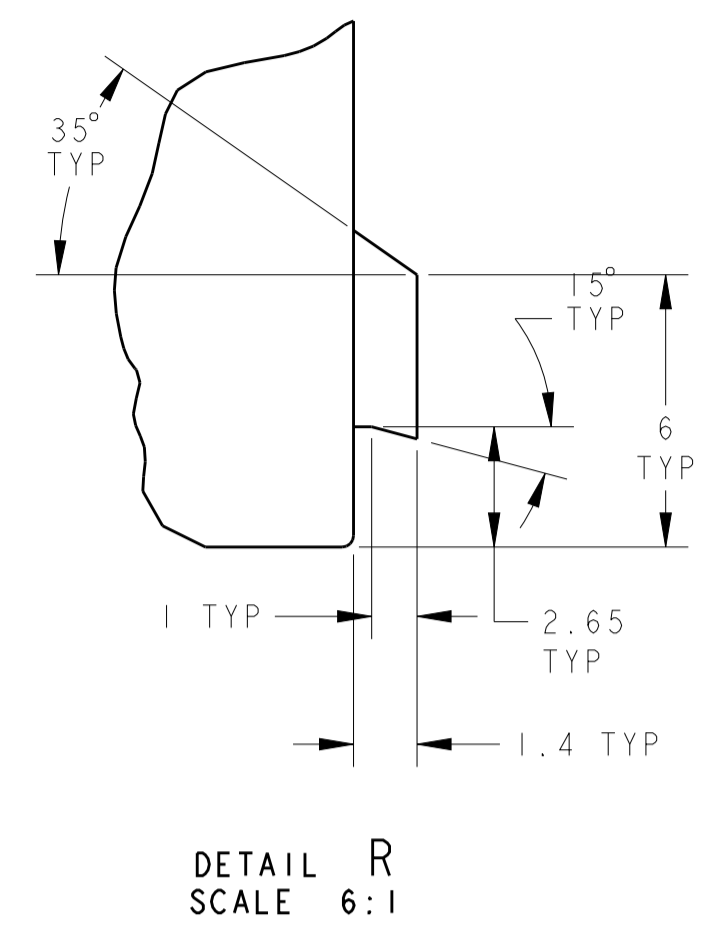
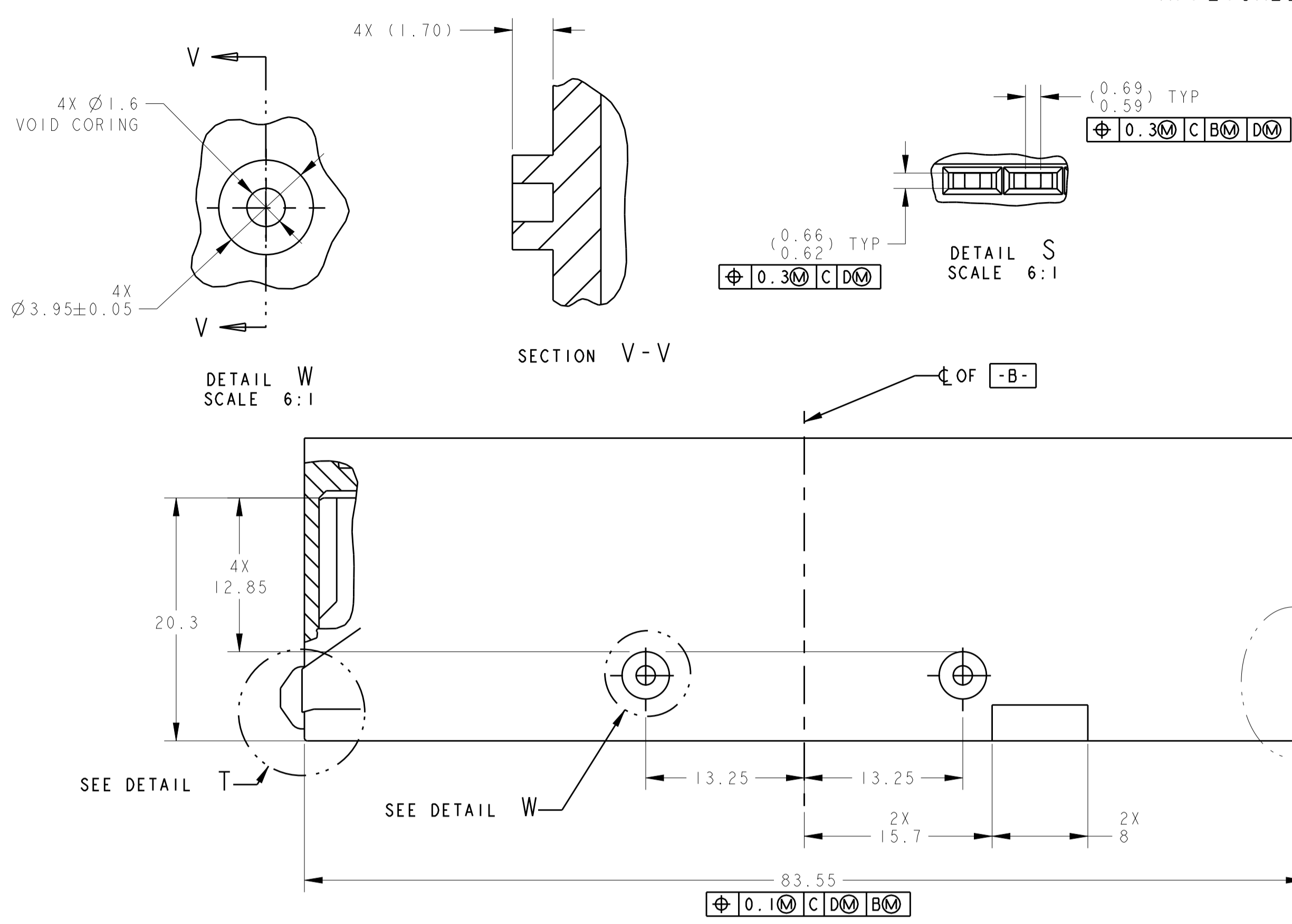
NAME: ASSEMBLY, FEMALE, 60 WAY GET, TCM, CONNECTOR
SIZE: A100779
CAGE CODE: 1438521
DRAWING NO: 1438521-1
SHEET 1 OF 3
REV E9

TE Connectivity

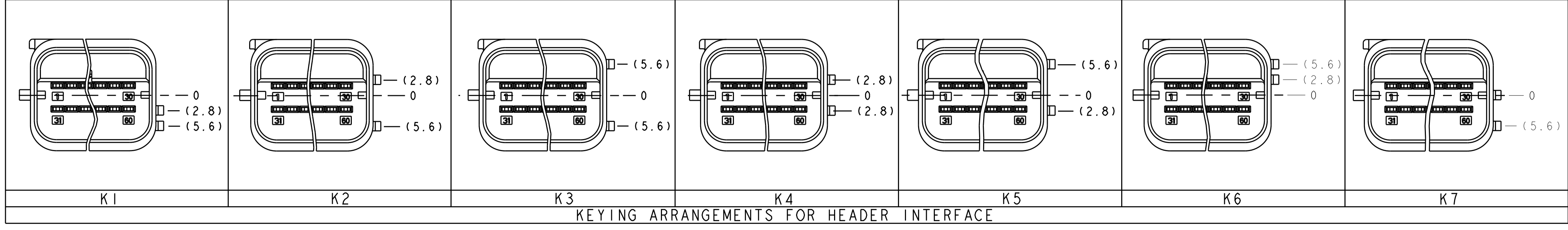
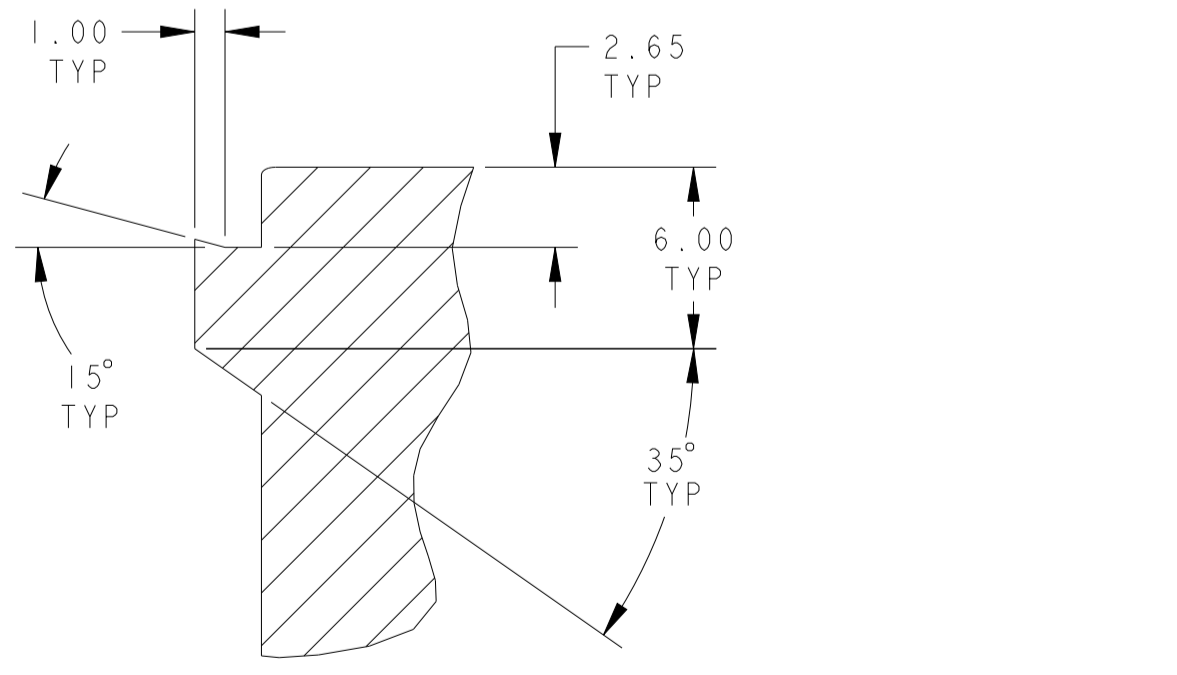
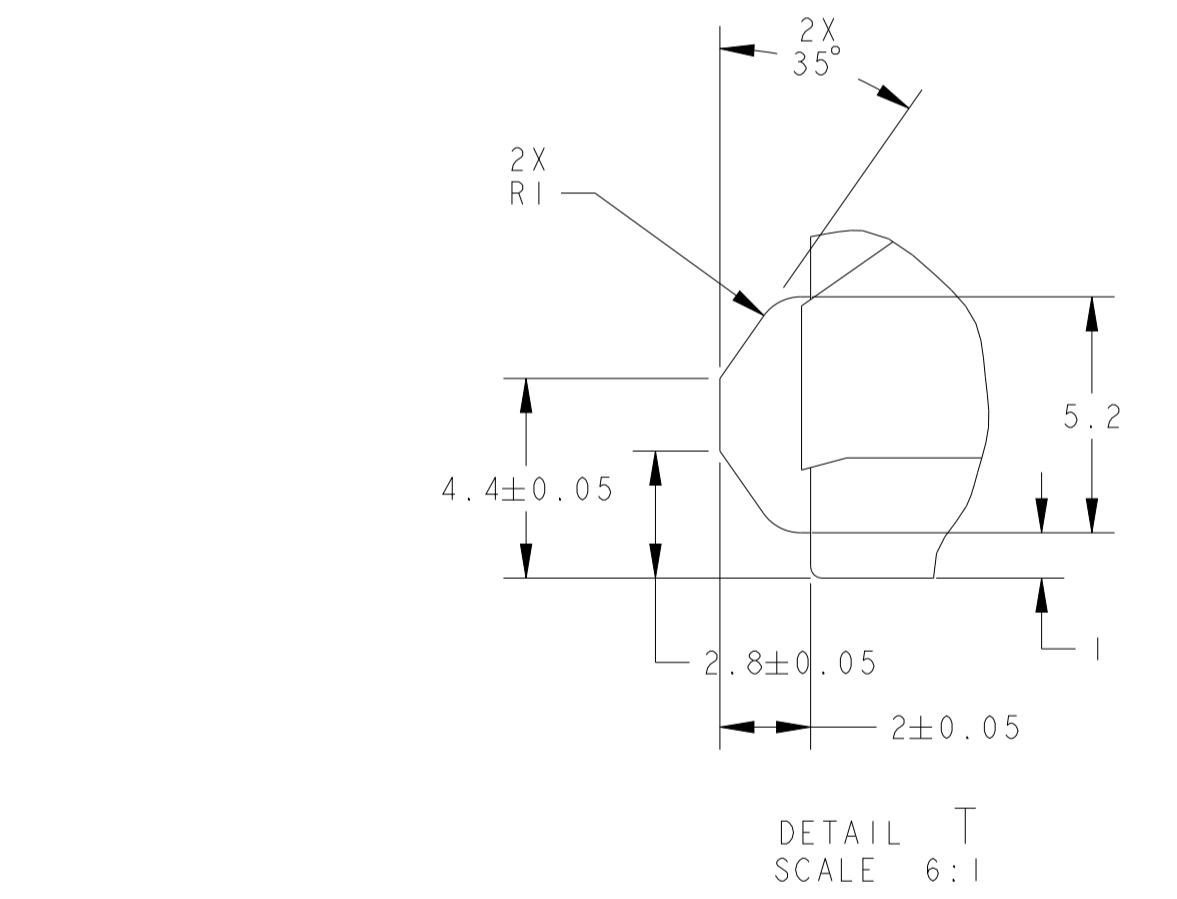
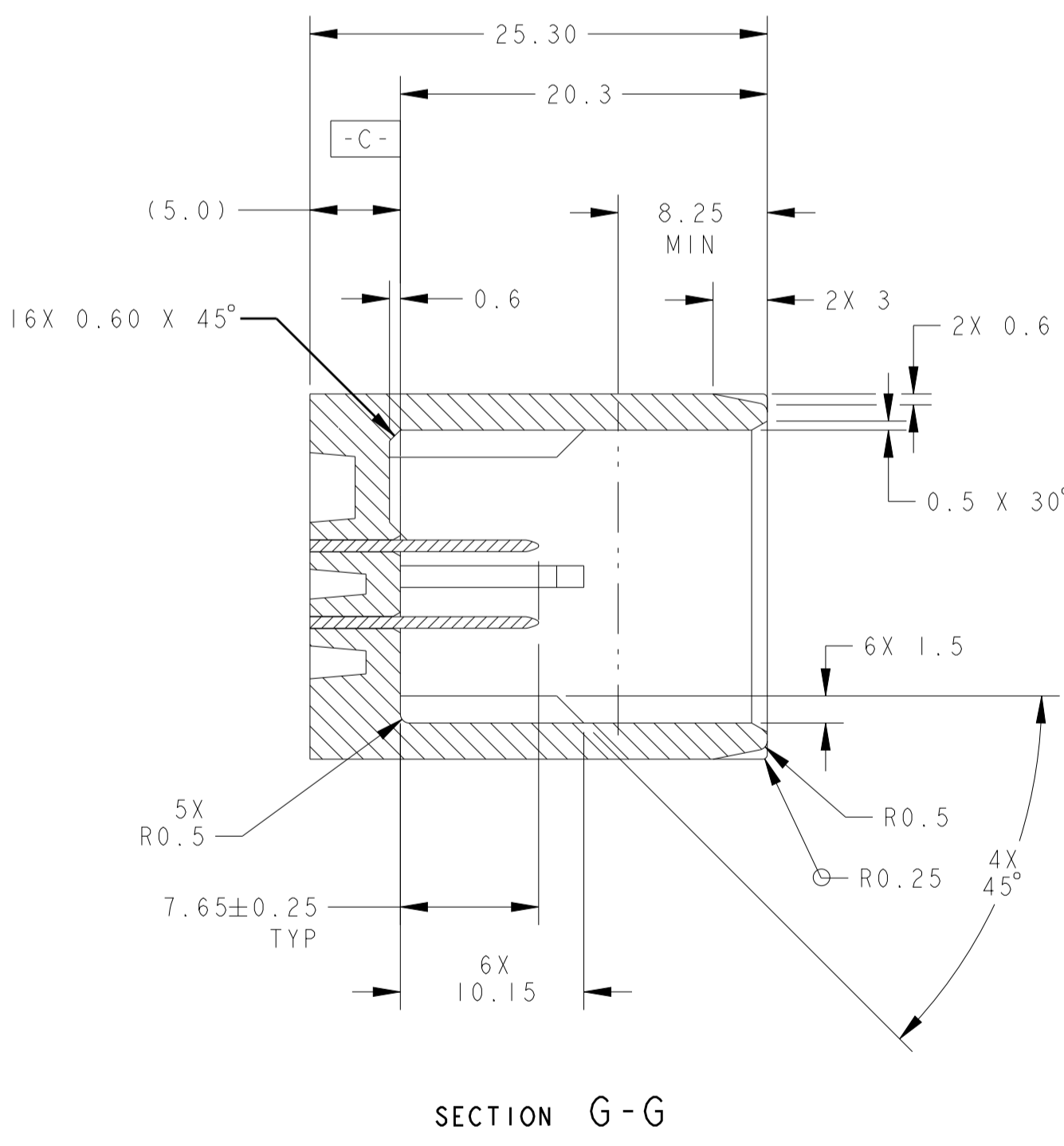
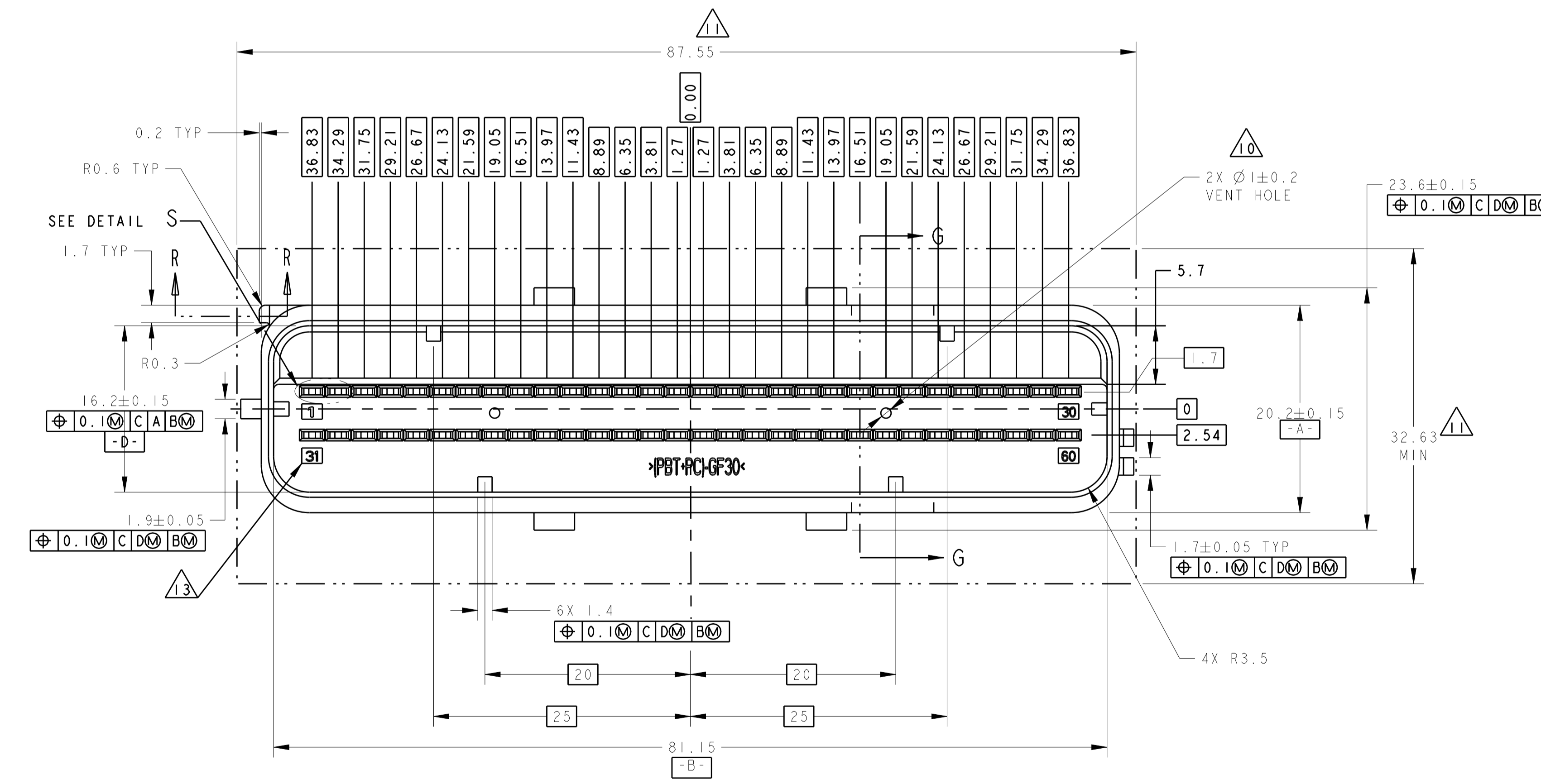
APPLICABLE HEADER INTERFACE SPECIFICATION

SHOWN WITH KEYING OPTION K1
SCALE 3:1

REVISIONS				
P.	LTN.	DESCRIPTION	DATE	APP'D.
-	-	SEE SHEET 1	-	-



- NOTE(S): UNLESS OTHERWISE SPECIFIED
- PART MUST CONFORM TO THE LATEST LEVEL OF USCAR DATED 951010.
 - ALL PLASTIC PARTS MUST HAVE MATERIAL IDENTIFICATION SYMBOLS CLEARLY MARKED, WHEREVER PACKAGE SIZE PERMITS.
 - GENERAL TOLERANCES: ±0.2 ALL ONE PLACE DIMENSIONS, ±0.1 ALL TWO PLACE DIMENSIONS, ±2° ALL ANGULAR PLACE DIMENSIONS
 - ALL RADIUS ±0.5.
 - PIN PLATING DETAILS . . .
 - (SEALED INTERFACES ONLY) SEALING SURFACE MUST BE SMOOTH AND FREE OF PARTING LINES.
 - PARTS ARE TO BE FREE OF SCRATCHES, DISCOLORATION, SALT RESIDUE OR OTHER IMPERFECTIONS THAT MAY AFFECT FUNCTION OR FIT OF PART.
 - DRAFT ANGLE PERMISSIBLE ONLY WITHIN PRINT TOLERANCE.
- 9 SEALING SURFACE, NO WITNESS LINES OR DAMAGE PERMITTED.
 - 10 VENT HOLE SIZE AND LOCATION OPTIONAL.
 - 11 THIS AREA TO REMAIN CLEAR FOR HARNESS ASSEMBLY.
 - 12 HOUSING MATERIAL SELECTION BASED ON PERFORMANCE REQUIRED FOR END APPLICATION AND SOLDERING PROCESS.
POLYESTER (PBT) - 30% GLASS TESTED TO USCAR2, REV 3, CLASS 2, MAX. AMBIENT 100 DEGREE C.
 - 13 CIRCUIT NUMBERS 1.0 HIGH CHARACTERS RAISED 0.05 - 0.1 IN A 0.10 TO 0.15 RECESSED AREA.



THIS DRAWING IS A CONTROLLED DOCUMENT.		OWN: DL DRUMMOND 11FEB2005	TE Connectivity ASSEMBLY, FEMALE, 60 WAY GET, TCM, CONNECTOR
DIMENSIONS: mm		CHK: AJ VALASEK 11FEB2005	
TOLERANCES UNLESS OTHERWISE SPECIFIED:		APVD: AJ VALASEK 11FEB2005	NAME: PRODUCT SPEC
0 PLC ±	1 PLC ±0.5	2 PLC ±0.20	APPLICATION SPEC
3 PLC ±	4 PLC ±	ANGLES ±	SIZE: 114-13060
MATERIAL:	FINISH:	WEIGHT:	RESTRICTED TO: A100779C=1438521
CUSTOMER DRAWING		SCALE: 1:1	SHEET 2 OF 3 REV E9

X-ON Electronics

Largest Supplier of Electrical and Electronic Components

Click to view similar products for [Automotive Connectors](#) category:

Click to view products by [TE Connectivity](#) manufacturer:

Other Similar products are found below :

[003-018-000](#) [60993906-B](#) [72.330.1035.1](#) [F358300-B](#) [F407400](#) [776880-1](#) [827153-1](#) [8N1515-32-24P](#) [9-1326729-8](#) [925474-1](#) [928905-1](#)
[964562-4](#) [968782-1](#) [98891-1012](#) [12004475-L](#) [12041318-B](#) [12052466](#) [12015909](#) [1-21030-1](#) [12041318](#) [12047957](#) [12185550](#) [12336-12](#)
[12147304](#) [1-326211-1](#) [13681974](#) [13783086](#) [13832576](#) [13542772](#) [13675513](#) [1428188-1](#) [1437287-3](#) [1428188-2](#) [DS07-19S-5020](#) [1456983-5](#)
[1456987-7](#) [APD-7CP-H](#) [APK-SB25A10L](#) [1452931-2](#) [15336198](#) [15491972](#) [15305306](#) [15396680](#) [15425613](#) [15518544](#) [15522351](#) [1719636-1](#)
[172190-2](#) [172190-5](#) [192900-0402](#)