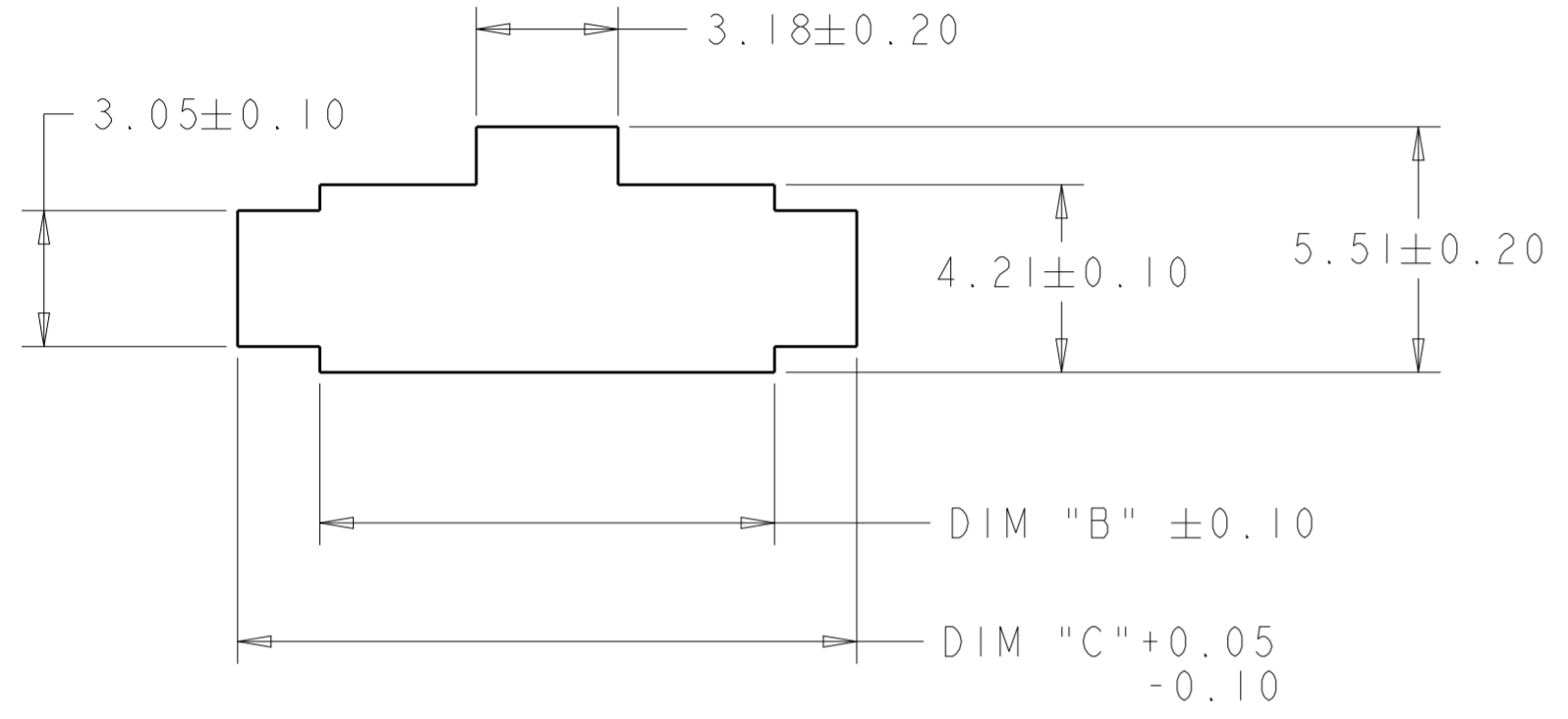
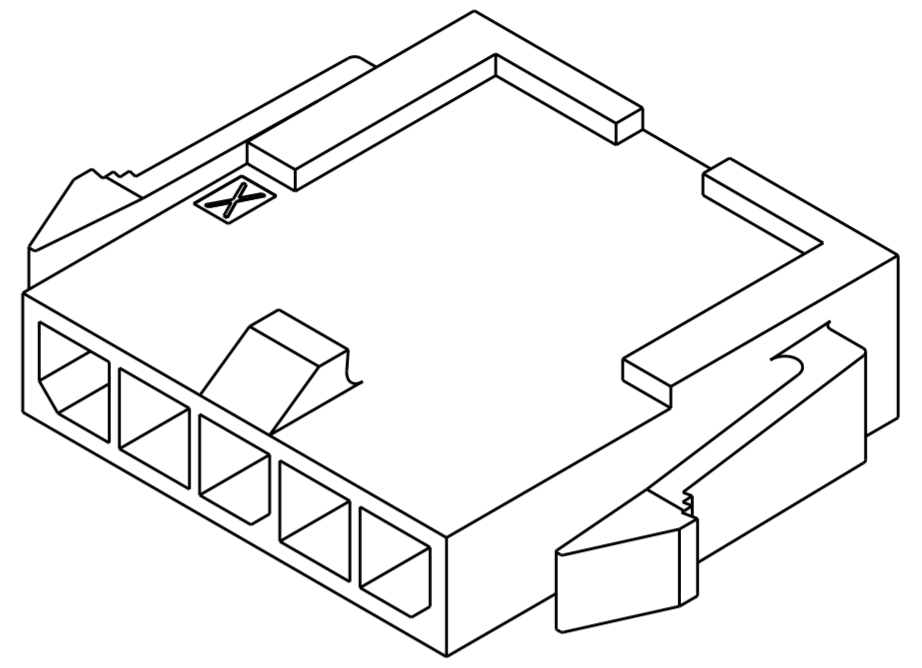
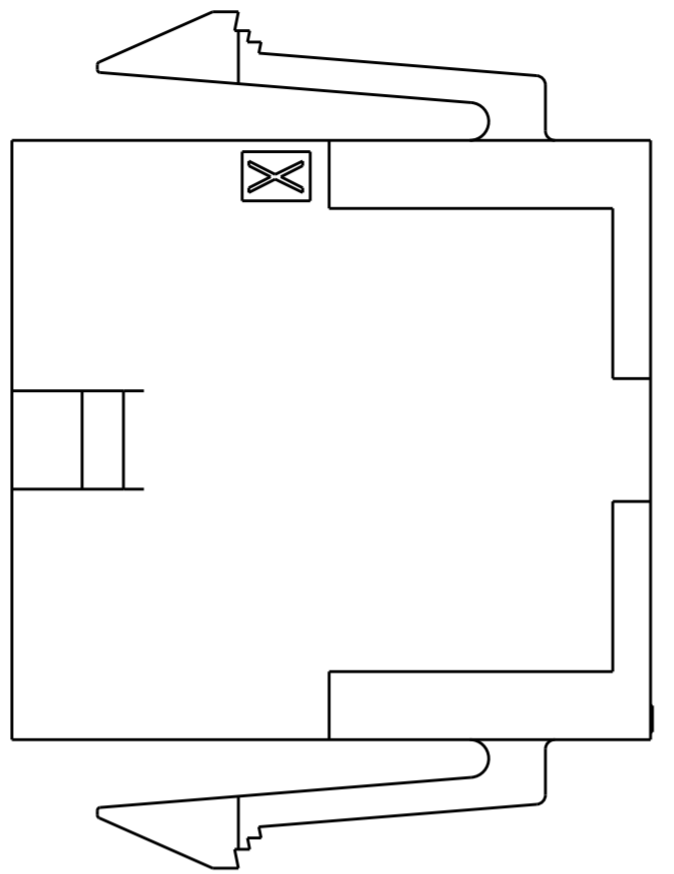


THIS DRAWING IS UNPUBLISHED. RELEASED FOR PUBLICATION 20  
 © COPYRIGHT 20 ALL RIGHTS RESERVED.

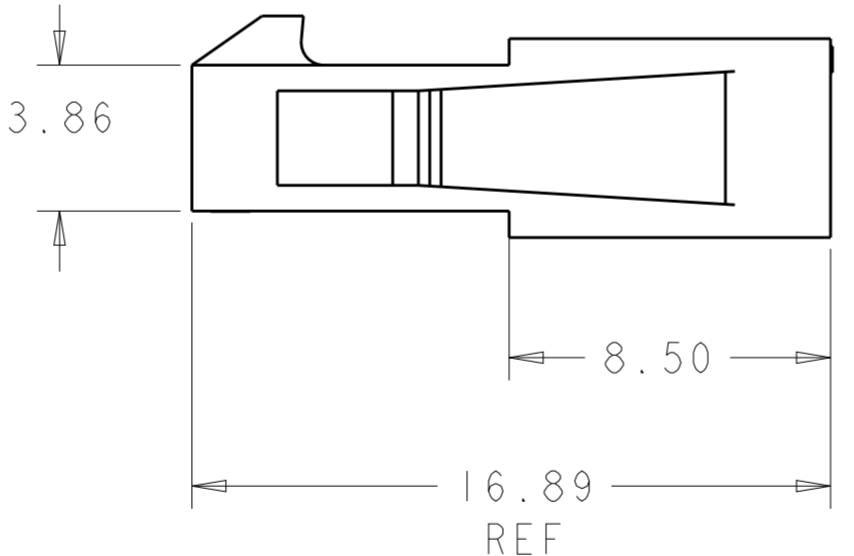
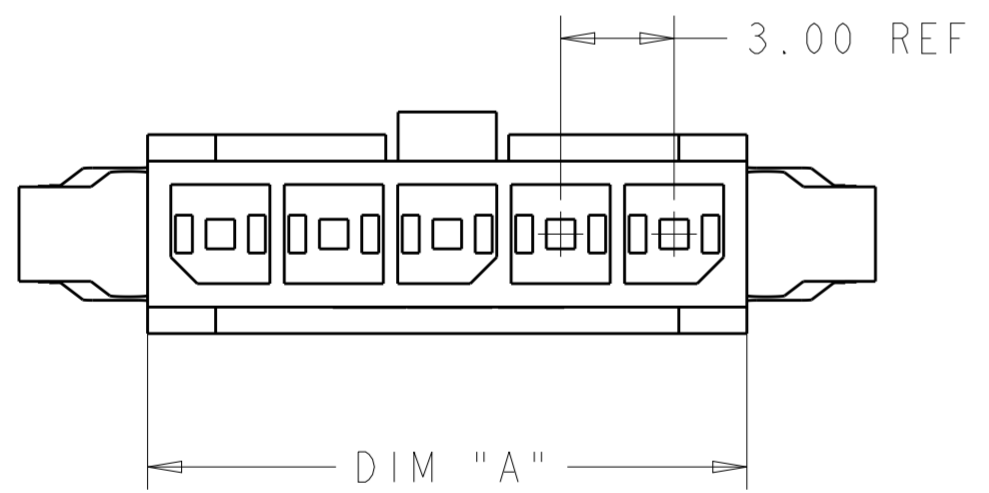
REVISIONS					
P	LTR	DESCRIPTION	DATE	DWN	APVD
P2		REVISED PER ECR-16-013672	14OCT2016	BW	SC
P3		REVISED PER ECR-17-013562	14SEP2017	JB	DZ
P4		REVISED PER ECR-18-004185	15MAY2018	JB	DZ



PANEL CUT-OUT  $\triangle 1$



SCALE 5:1



- $\triangle 1$  RECOMMENDED PANEL THICKNESS 1.57-2.3.
- 2. PANEL MUST BE PUNCHED SO THAT HOUSING ENTERS THE PANEL IN THE SAME DIRECTION AS THE PUNCH.
- $\triangle 3$  MATERIAL PA66/6 UL94-V0 , COLOR-BLACK.
- $\triangle 4$  PRELIMINARY MATERIAL PA66 UL94-V0, GW , COLOR-NATURAL.

OBSOLETE	<del>16.88</del>	<del>13.20</del>	<del>12.85</del>	<del>4</del>	<del>2-1445048-4</del>
OBSOLETE	<del>13.88</del>	<del>10.20</del>	<del>9.85</del>	<del>3</del>	<del>2-1445048-3</del>
OBSOLETE	<del>10.88</del>	<del>7.20</del>	<del>6.85</del>	<del>2</del>	<del>2-1445048-2</del>
$\triangle 3$	40.88	37.20	36.85	12	1-1445048-2
	37.88	34.20	33.85	11	1-1445048-1
	34.88	31.20	30.85	10	1-1445048-0
	31.88	28.20	27.85	9	1445048-9
	28.88	25.20	24.85	8	1445048-8
	25.88	22.20	21.85	7	1445048-7
	22.88	19.20	18.85	6	1445048-6
	19.88	16.20	15.85	5	1445048-5
	16.88	13.20	12.85	4	1445048-4
	13.88	10.20	9.85	3	1445048-3
	10.88	7.20	6.85	2	1445048-2
REMARK	DIM C	DIM B	DIM A	NO. OF POS.	PART NUMBER

THIS DRAWING IS A CONTROLLED DOCUMENT. DWN W J RUDY 29AUG2000  
 CHK W DAVIS 29AUG2000  
 APVD W DAVIS 29AUG2000

**STE** TE Connectivity

NAME: PLUG HOUSING, 2 TO 12 POSITION SINGLE ROW, PANEL MOUNT MICRO MATE-N-LOK™

PRODUCT SPEC: 108-1836  
 APPLICATION SPEC: 114-13000  
 WEIGHT: -

SIZE: A2 CAGE CODE: 00779 DRAWING NO: C-1445048 RESTRICTED TO: -  
 SCALE: 6:1 SHEET: 1 OF 1 REV: P4

CUSTOMER DRAWING

## X-ON Electronics

Largest Supplier of Electrical and Electronic Components

*Click to view similar products for [Pin & Socket Connectors](#) category:*

*Click to view products by [TE Connectivity](#) manufacturer:*

Other Similar products are found below :

[6450822-1](#) [770392-1](#) [794042-1](#) [796885-1](#) [8-794535-1](#) [881459-2](#) [R929993003](#) [1-350779-3](#) [1403611-1](#) [1-480349-5](#) [1586092-1](#) [1586129-1](#)  
[1586487-1](#) [1586681-4](#) [1586700-1](#) [1586065-1](#) [1586077-1](#) [1586368-1](#) [1586380-1](#) [1586680-5](#) [1586681-2](#) [1604996-1](#) [16-06-0038](#) [164164-5](#) [1-](#)  
[6609930-1](#) [172296-1](#) [1-794714-6](#) [19-09-2035](#) [1969804-1](#) [200503-1](#) [200788-2](#) [201046-7](#) [202648-4](#) [2029076-2](#) [2029090-4](#) [2029095-4](#) [2-](#)  
[66102-6](#) [925061-7](#) [926681-1](#) [293734-4](#) [293737-2](#) [1-765362-4](#) [1-794606-3](#) [1871534-1](#) [1969795-1](#) [1969798-1](#) [1969800-1](#) [200833-4](#)  
[2008625-2](#) [2029027-2](#)