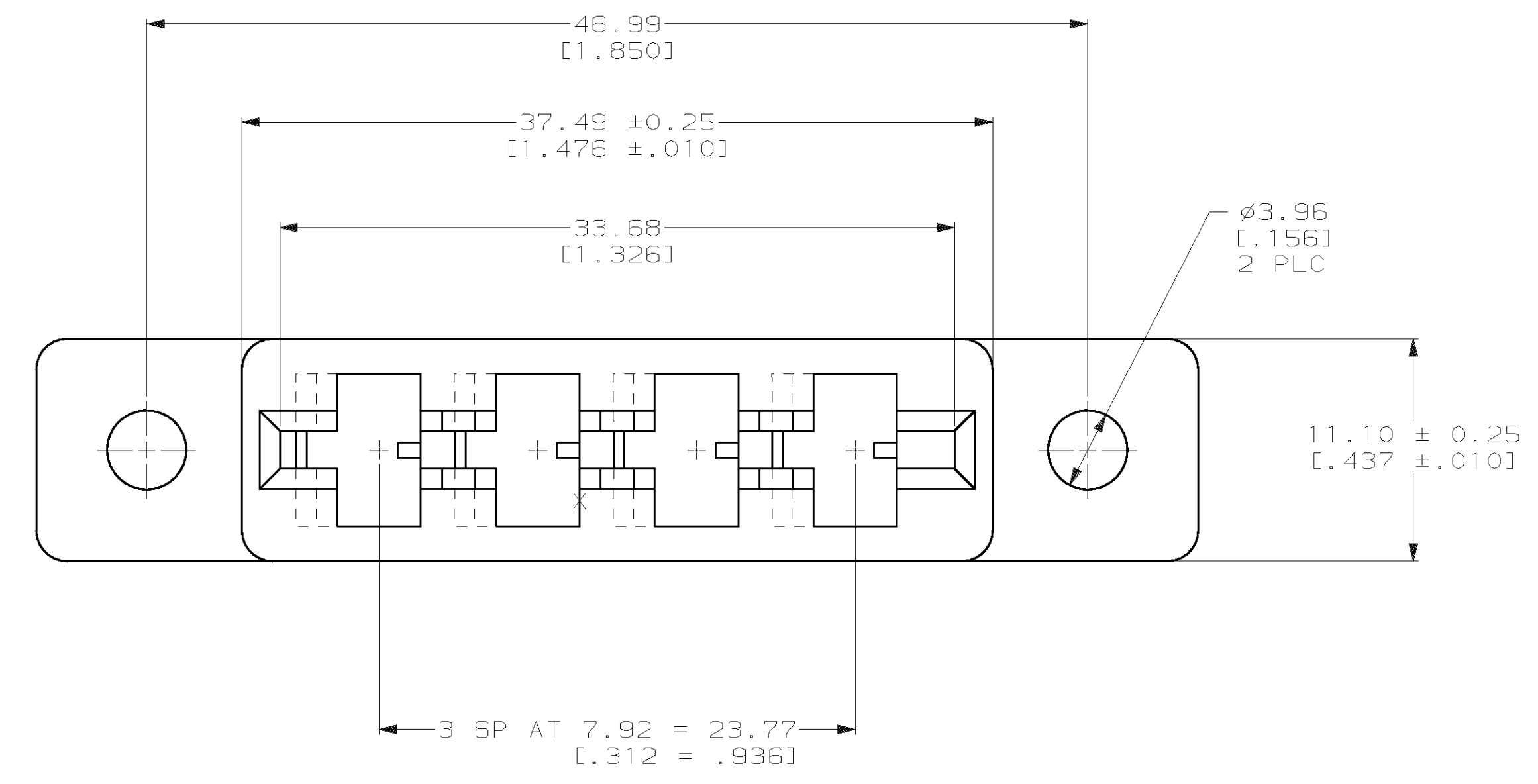
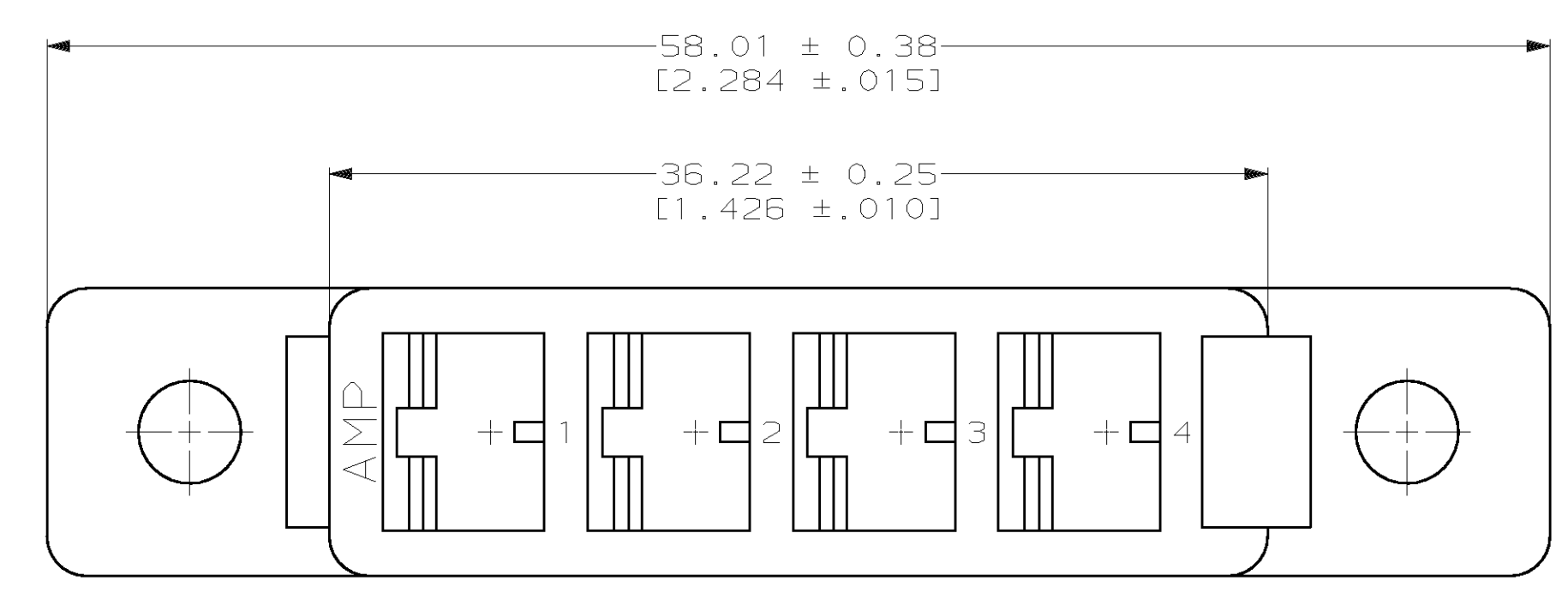
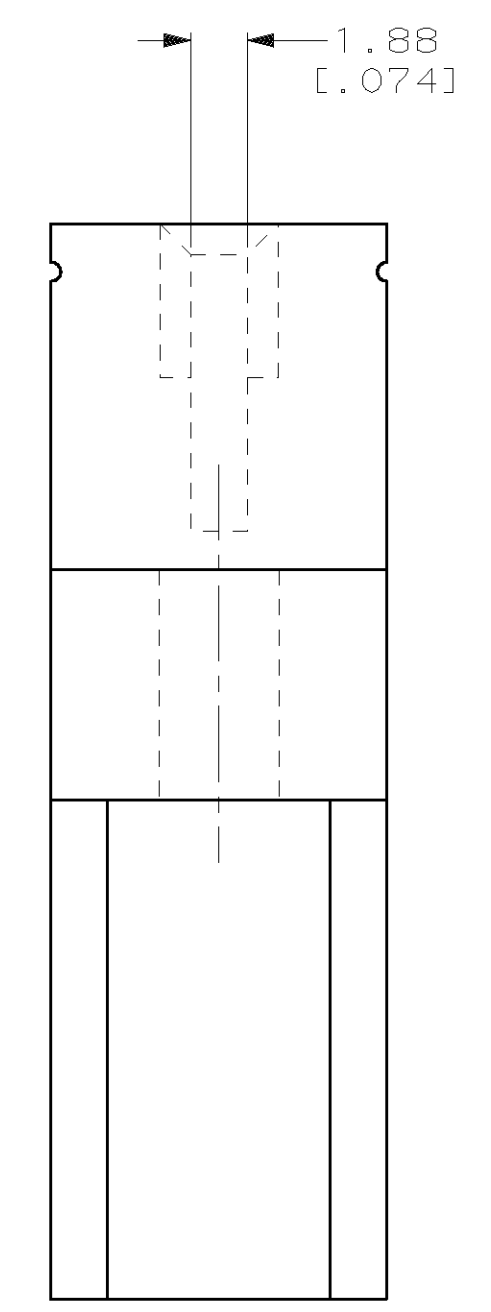
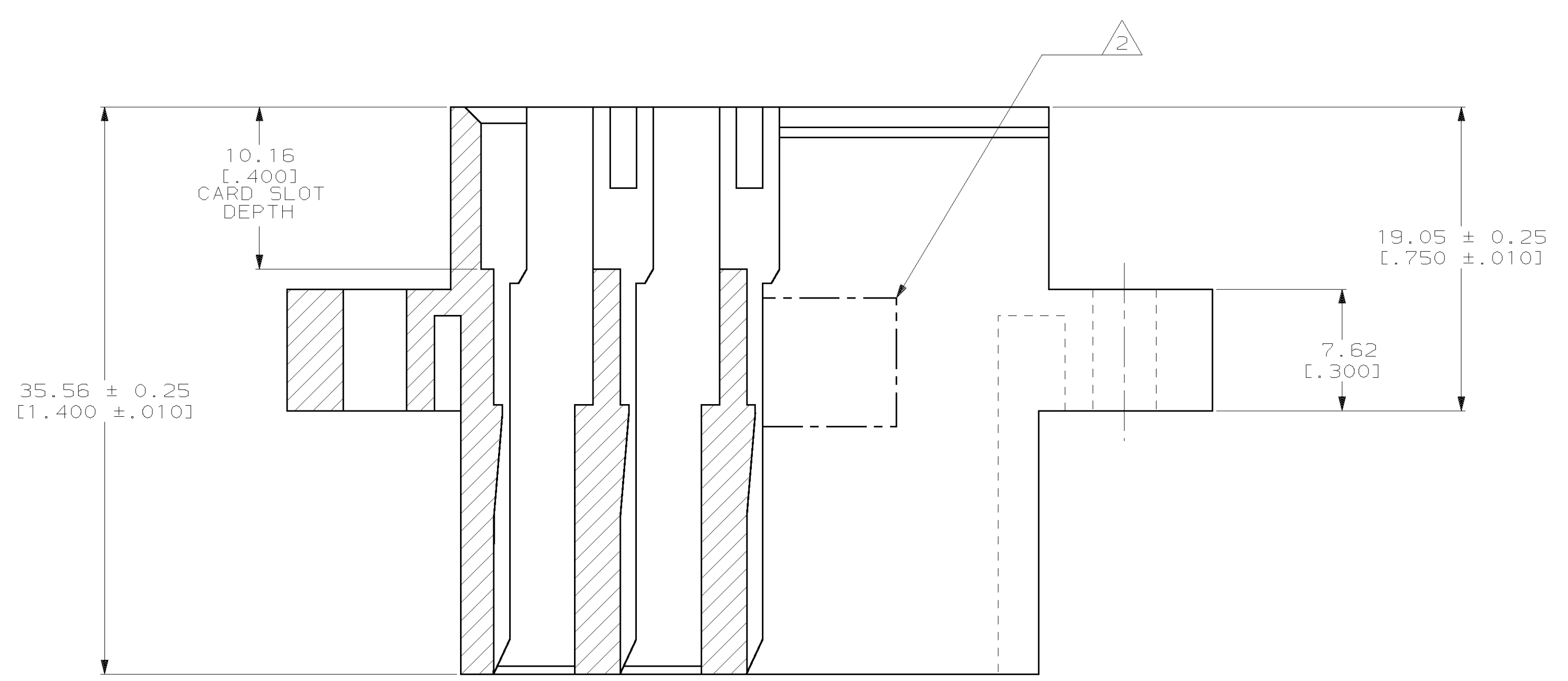


LOC		DIST		P		F		ZONE		LTR		REVISIONS		DATE	APPD	
FT	22												0	RELEASED PER 95-0158-003-1	3/11/96	HR
													A	REV PER 0320-264-97	05 AUG 97	NS
													B	REV PER 0652-0070-99	04 JUN 99	MM



1 MATERIAL: VALOX 420 SE0; COLOR: NATURAL.
 2 "AMP" PART NO AND DATE CODE IN THIS AREA.



THIS DRAWING IS A CONTROLLED DOCUMENT FOR AMP INCORPORATED. IT IS SUBJECT TO CHANGE AND THE CONTROLLING ENGINEERING ORGANIZATION SHOULD BE CONTACTED FOR THE LATEST REVISION.

DO NOT SCALE PRINT. UNLESS SPECIFIED DIMENSIONS IN mm [INCHES]		DR 3/11/96 P. BENNINGHOVE	4 POSITION		145233-1	
TOLERANCES - ON :		CHK 3/11/96 H ROSE	PART NO		AMP Incorporated Harrisburg, PA 17105-3608	
2 PLC DEC ± -		APPD 3/11/96 H ROSE	NAME		HOUSING, HIGH CURRENT, .062THK. BD.	
3 PLC DEC ± .005		APPD 3/11/96 M THUMMA	PRODUCT SPEC		-	
ANGLES ± -		APPLICATION SPEC	SIZE	CAGE CODE	DRAWING NO	
SEE CALLOUT		-	D	00779	C-145233	
FINISH		-	SCALE	4:1	SHEET 1 OF 1	
-		WEIGHT	-		CUSTOMER DRAWING	

X-ON Electronics

Largest Supplier of Electrical and Electronic Components

Click to view similar products for [Standard Card Edge Connectors](#) category:

Click to view products by [TE Connectivity](#) manufacturer:

Other Similar products are found below :

[CR7E-30DB-3.96E\(72\)](#) [6364499-1](#) [6565204-6](#) [PKC-156](#) [1437274-4](#) [147889-1](#) [1489165-4](#) [EBT15622B2X](#) [1-582587-1](#) [284-0102-12100](#)
[286-0052-12101A](#) [306022901000000](#) [307-012-502-202](#) [307-056-520-300](#) [2129318-1](#) [245-062-520-350](#) [287-0032-12101](#) [306-028-525-102](#)
[307-072-526-202](#) [345-060-559-303](#) [392-008-559-201](#) [534671-1](#) [341-240-317](#) [345-044-500-300](#) [346-240-318](#) [395-100-524-300](#) [09-07-2032](#)
[10035388-802LF](#) [10115859-011LF](#) [10122859-009LF](#) [10127905-B04B24BLF](#) [530555-1](#) [5-678046-1](#) [73726-0005](#) [66308-1](#) [1-1437275-6](#)
[PEC-07-02-T-S-A](#) [346-014-520-801](#) [307-048-502-202](#) [CE100F22-9-C](#) [CE100F26-7-C](#) [CE100F28-3-D](#) [CE156F18-9-C](#) [CE156F22-5-D](#)
[CE156F22-9-C](#) [CT100F22-2-D](#) [CT100F22-3-D](#) [CT100F24-2-D](#) [CT100F24-3-D](#) [CT100F24-6-C](#)