

4

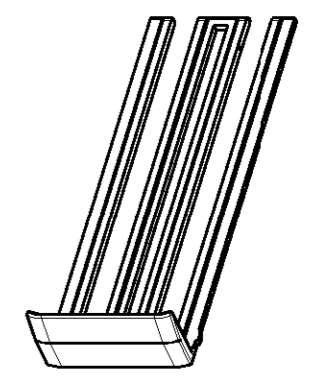
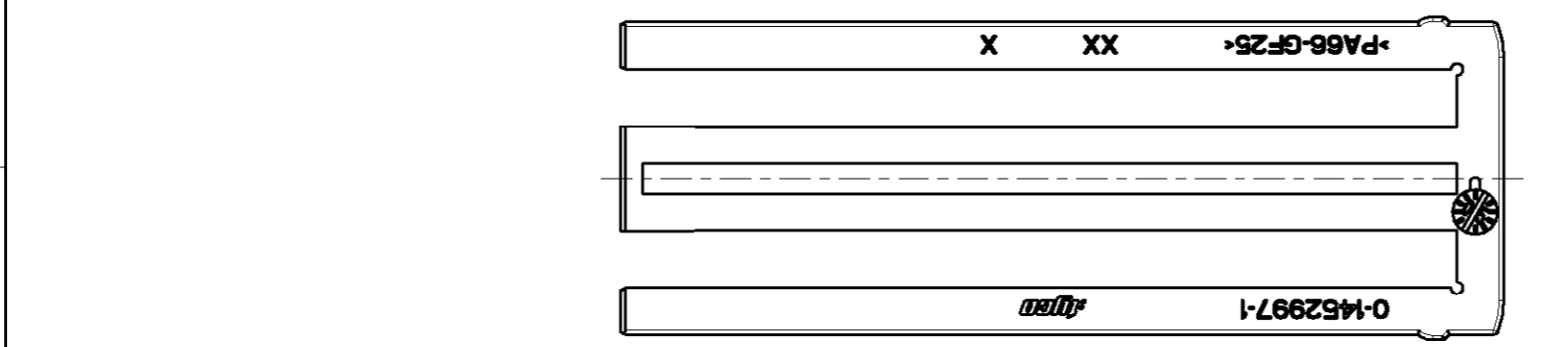
3

2

1

THIS DRAWING IS UNPUBLISHED. RELEASED FOR PUBLICATION 2005
 © COPYRIGHT 2005 BY TYCO ELECTRONICS CORPORATION. ALL RIGHTS RESERVED.

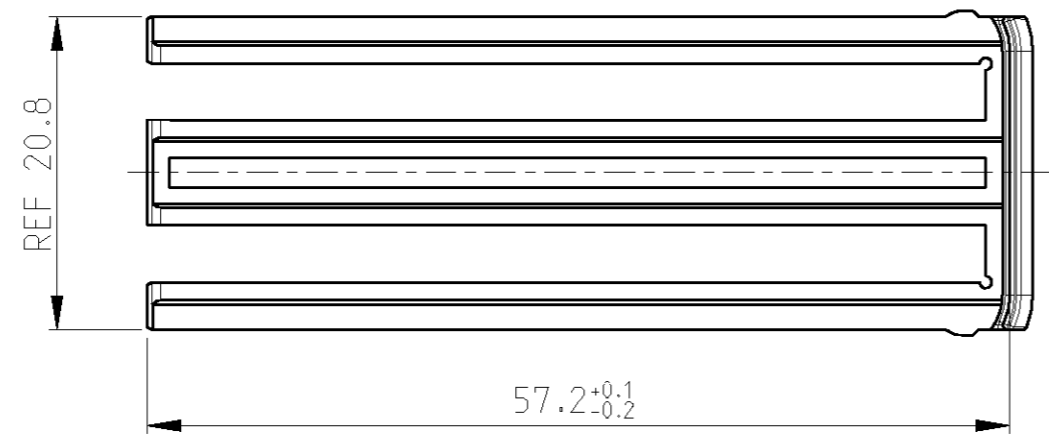
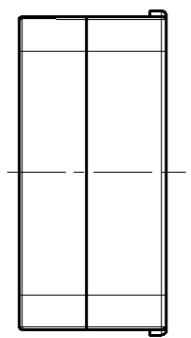
LOC	DIST	REVISIONS					
		P	LTR	DESCRIPTION	DATE	DWN	APVD
A1	-		A	EGA0-0388-05	20DEC2004	GP	KR
			A1	ECR-05-001426	06APR2005	GP	GM



1:1



NOTES:
 Bemerkungen:
 1 DELIVERED CONDITION: LOOSE PIECES
 Anlieferungszustand: Teile lose beigestellt



MATED WITH verwendet mit	1452931 1452995	1x	PA66-GF25	76 POS. 2-NDARY LOCK	RED	1
			0-1452997-1	MATERIAL	DESCRIPTION	COLOUR
		1,40	WEIGHT OF PART NO [g]			
		QTY REQD PER ASSY		PARTS LIST		

THIS DRAWING IS A CONTROLLED DOCUMENT FOR TYCO ELECTRONICS CORPORATION IT IS SUBJECT TO CHANGE AND THE CONTROLLING ENGINEERING ORGANIZATION SHOULD BE CONTACTED FOR THE LATEST REVISION.		DWN G.PUCKEL 20DEC2004	tyco tyco Electronics AMP GmbH	
		CHK K.ROTH 20DEC2004	D - 64625 Bensheim	
		APVD G.MUMPER 20DEC2004	NAME 76 POS. 2-NDARY LOCK	
DIMENSIONS: mm		PRODUCT SPEC -	-	
TOLERANCES UNLESS OTHERWISE SPECIFIED:		APPLICATION SPEC -	-	
0 PLC ±		WEIGHT -	SIZE A3	CAGE CODE 00779
1 PLC ±			DRAWING NO C=1452997	RESTRICTED TO -
2 PLC ±				
3 PLC ±				
4 PLC ±				
ANGLES ±°				
MATERIAL -				
FINISH -				
		CUSTOMER DRAWING		SCALE 2:1
				SHEET 1 OF 1
				REV A1

X-ON Electronics

Largest Supplier of Electrical and Electronic Components

Click to view similar products for [Automotive Connectors](#) category:

Click to view products by [TE Connectivity](#) manufacturer:

Other Similar products are found below :

[003-018-000](#) [600858](#) [60403001](#) [60993906-B](#) [60993913-B](#) [629515004020001](#) [M902-2131](#) [M902-2161](#) [M902-2344](#) [72.330.1035.1](#)
[73.353.4028.0](#) [F118010](#) [F119300-B](#) [F132210](#) [F132210-B](#) [F166900](#) [F180100](#) [F258300](#) [F258300-B](#) [F294300-B](#) [F339100](#) [F339700](#) [F358300-](#)
[B](#) [F374110](#) [F407400](#) [F412210](#) [F427600](#) [F444110](#) [F487000](#) [F495100-B](#) [F500900-B](#) [F509500B-B](#) [770444-1](#) [776880-1](#) [827153-1](#) [881735-1](#)
[8N1515-32-24P](#) [9-1326727-8](#) [9-1326729-8](#) [925467-1](#) [925474-1](#) [928905-1](#) [936398-2](#) [964562-1](#) [964562-4](#) [964731-2](#) [965051-1](#) [968782-1](#)
[GT17SA-8DS-HU](#) [GT17VS-10DP-5.2CF](#)