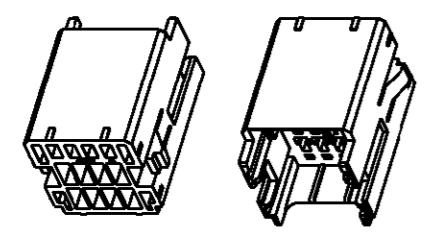
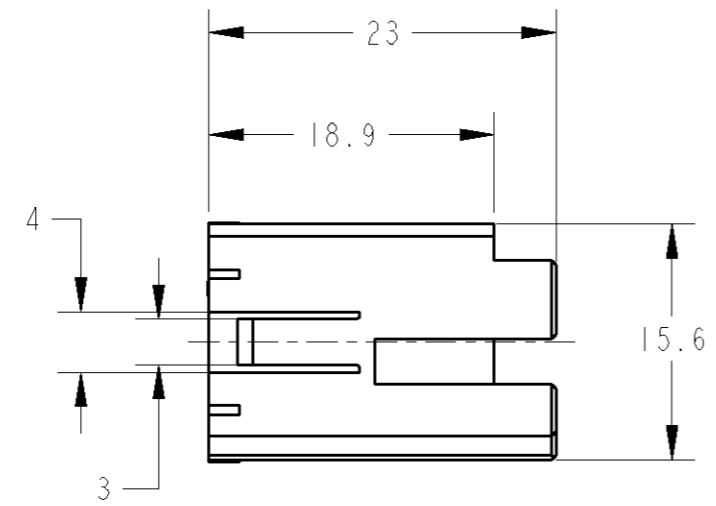
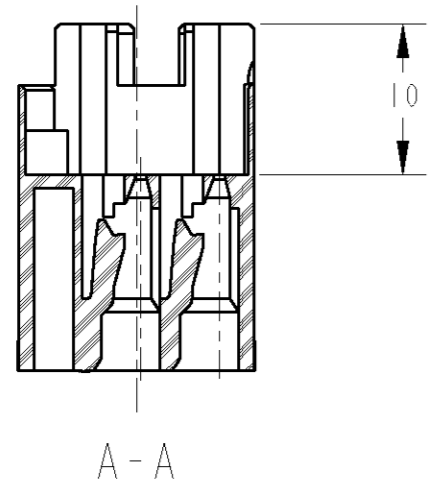
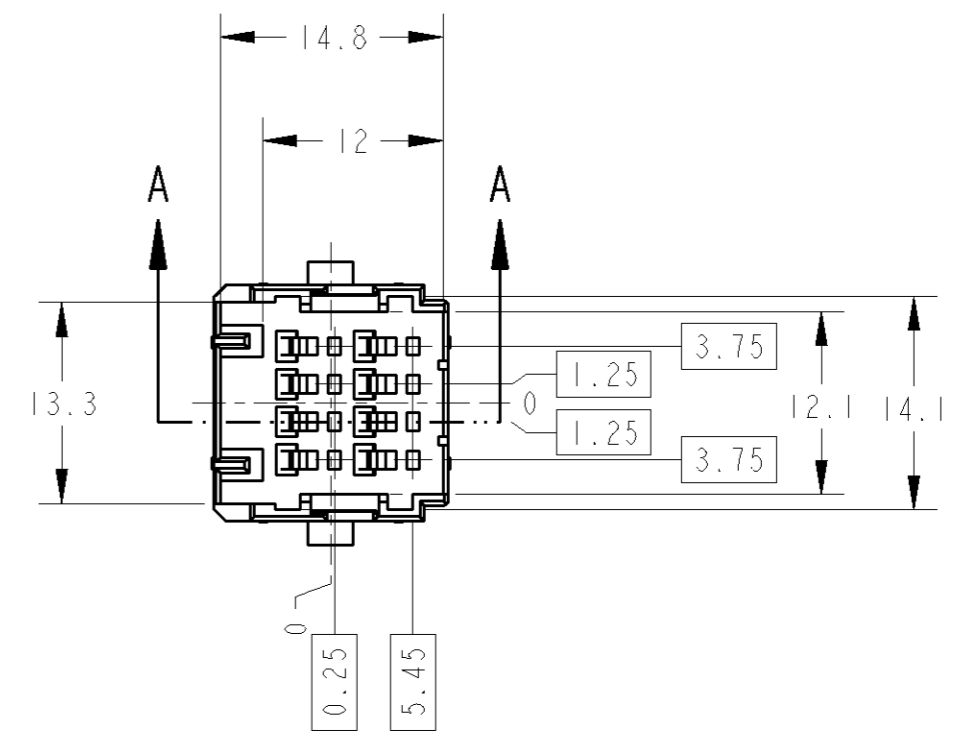
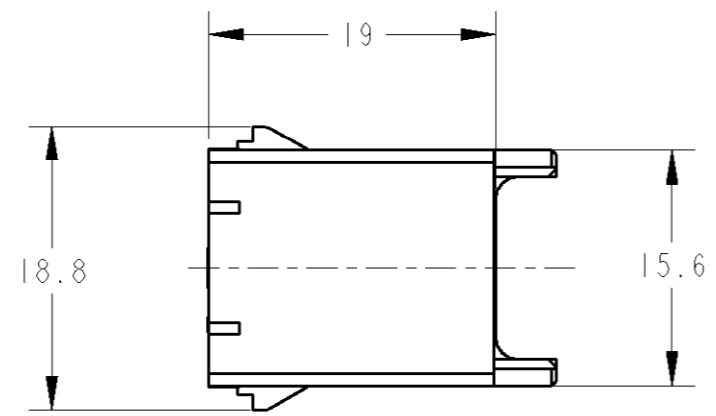
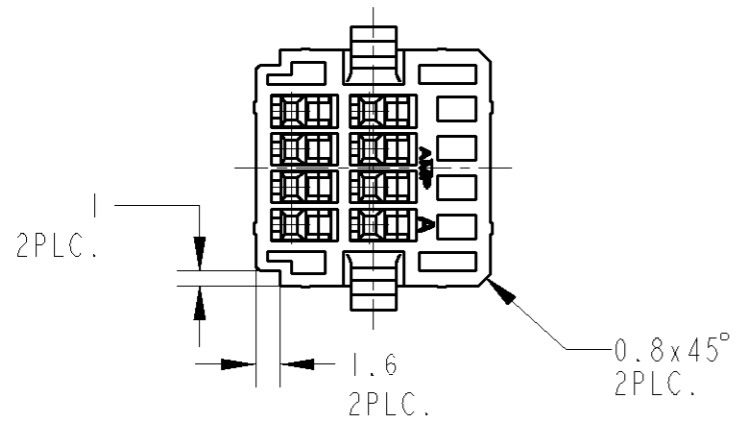


THIS DRAWING IS UNPUBLISHED. RELEASED FOR PUBLICATION
 © COPYRIGHT - BY TYCO ELECTRONICS CORPORATION. ALL RIGHTS RESERVED.

LOC	DIST	REVISIONS						
		P	LTR	DESCRIPTION	ECN	DATE	DWN	APVD
J	-	0		RELEASED	FJ00-1945-01	12OCT01	ET	KA



SCALE 1:1



- 1. APPLICABLE CONTACT PART NUMBER ; 173682
- 2. THE MATING PLUG HOUSING PART NUMBER ; 174044
- 3. THE MATING OUTER HOUSING ; 1473867
- 4. PACKING STYLE ; INNER - BLISTER
OUTER - PAPER BOX

- 1. 適用端子型番 ; 173682
- 2. 相手メスハウジング型番 ; 174044
- 3. 相手オスハウジング型番 ; 1473867
- 4. 梱包形態 ; 内装 - プリスター
外装 - ダンボール

NATURAL (WHITE)	1473866-1
COLOR 色	PART NUMBER 製品型番

WIRE RANGE 相当電線断面積	0.37~0.56 mm ²	INSULATION DIA 被覆外径	1.8~2.0 mm
DWN E. TAKIZAWA 12OCT01		Tyco Electronics AMP K.K. Kawasaki, Japan	
CHK Y. FUJIWALA 12OCT01		NAME 040MLC CONNECTOR 8 POSITIONS CAP INNER HOUSING (2 PIECES)	
APVD K. ASAI 12OCT01		SIZE	RESTRICTED TO
PRODUCT SPEC 108-5471		CAGE CODE	00779
APPLICATION SPEC 114-5108		DRAWING NO	1473866
WEIGHT 3.0 g		SCALE 2:1	
CUSTOMER DRAWING		SHEET	1 OF 1
		REV	0

THIS DRAWING IS A CONTROLLED DOCUMENT FOR TYCO ELECTRONICS CORPORATION IT IS SUBJECT TO CHANGE AND THE CONTROLLING ENGINEERING ORGANIZATION SHOULD BE CONTACTED FOR THE LATEST REVISION.	
DIMENSIONS: 単位: 概 mm	TOLERANCES UNLESS OTHERWISE SPECIFIED: ±0.3
	0 PLC ±
	1 PLC ±0.1
	2 PLC ±0.01
	3 PLC ±0.001
	4 PLC ±
	ANGLES ±3°00'
MATERIAL 材料	FINISH 仕上
PBT	-

X-ON Electronics

Largest Supplier of Electrical and Electronic Components

Click to view similar products for [Automotive Connectors](#) category:

Click to view products by [TE Connectivity](#) manufacturer:

Other Similar products are found below :

[003-018-000](#) [600858](#) [60403001](#) [60993906-B](#) [60993913-B](#) [629515004020001](#) [M83723/71R1808N L/C](#) [M902-2131](#) [M902-2161](#) [M902-2344](#)
[72.330.1035.1](#) [73.353.4028.0](#) [F118010](#) [F119300-B](#) [F132210](#) [F166900](#) [F180100](#) [F258300](#) [F258300-B](#) [F294300-B](#) [F339100](#) [F339700](#)
[F358300-B](#) [F374110](#) [F407400](#) [F412210](#) [F444110](#) [F487000](#) [F495100](#) [F500900-B](#) [F509500B-B](#) [770444-1](#) [827153-1](#) [881735-1](#)
[8N1515-32-24P](#) [9-1326729-8](#) [925467-1](#) [925474-1](#) [928905-1](#) [936398-2](#) [964562-4](#) [964731-2](#) [968782-1](#) [GT17SA-8DS-HU](#) [GT17VS-10DP-](#)
[5.2CF](#) [98315-0001](#) [98315-0010](#) [98891-1012](#) [98895-2014](#) [98936-1039](#)