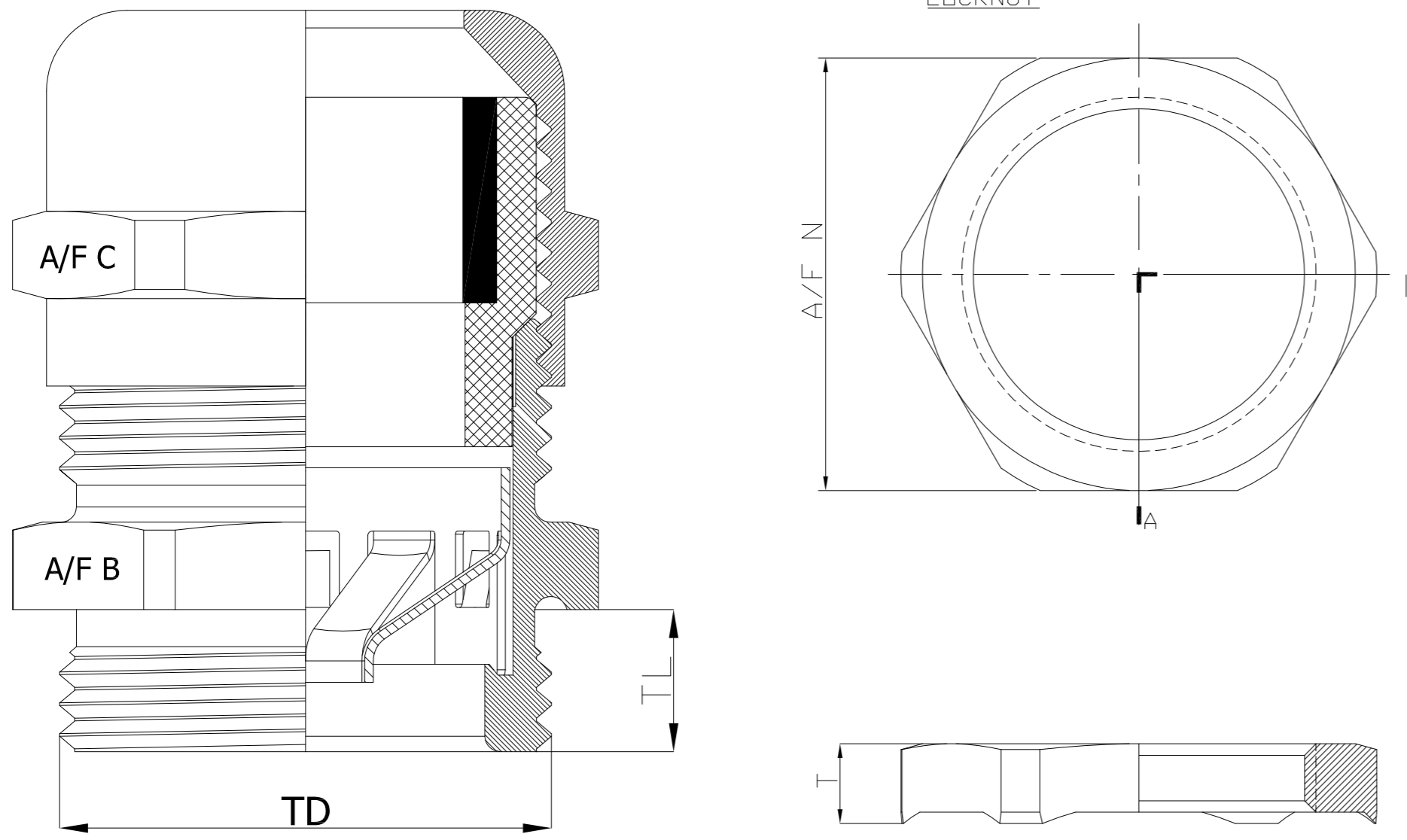


THIS DRAWING IS UNPUBLISHED. RELEASED FOR PUBLICATION  
 © COPYRIGHT BY TYCO ELECTRONICS CORPORATION. ALL RIGHTS RESERVED.

LOC	DIST	REVISIONS			
P	LTR	DESCRIPTION	DATE	DWN	APVD
	B	EBDO-0175-03	07-07-03	PB	FWK
	C	EBDO-0184-03	11-07-03	PB	FWK
	C1	ECR-10-022205	01FEB11	KK	HMR

NOTES:

- FOR TECHNICAL DATA REFER TO YOUR LOCAL TYCO ELECTRONICS SALES OFFICE.
- ALL DIMENSIONS ARE NOMINAL FOR REFERENCE ONLY UNLESS OTHERWISE STATED.
- FOR PACKAGING INFORMATION SEE PACKING SPECIFICATION 107-3315 TABLE ABOVE SHOWS PACKING LABEL DETAILS.
- 1 ASSEMBLY COMPRISES OF 1 OFF GLAND & CAP (AS SHOWN) INCLUDING NEOPRENE SEAL.



SECTION A-A

SIZE	TD mm	TL mm	T mm	Min. Shield Diameter mm	A/F BODY	A/F CAP	A/F NUT	Clamping Range ø mm	
PG 7	13.0	10.0	3.3	2.5	14	14	15	3.0	6.5
PG 9	16.0	10.0	3.3	3.0	17	17	18	4.0	8.0
PG 11	19.0	10.0	3.5	4.0	20	20	21	5.0	10.0
PG 13,5	21.0	10.0	3.5	5.0	22	22	23	6.0	12.0
PG 16	23.0	10.0	3.5	8.0	24	24	26	10.0	14.0
PG 21	29.0	12.0	4.0	11.0	30	30	32	13.0	18.0
PG 29	37.0	12.0	4.6	16.0	40	40	41	18.0	25.0
PG 36	47.0	14.0	5.6	19.0	50	50	51	22.0	32.0
PG 42	54.0	16.0	5.6	27.0	58	58	60	30.0	38.0
PG 48	59.0	18.0	6.1	30.0	64	64	64	34.0	44.0

OBSOLETE	Bag with TE Label & Instruction Sheet	1	PG EMC Gland PG48	Nickel Plate	<del>1-1478885-0</del>
		1	PG EMC Gland PG42	Nickel Plate	<del>1478885-9</del>
		1	PG EMC Gland PG36	Nickel Plate	1478885-8
		1	PG EMC Gland PG29	Nickel Plate	<del>1478885-7</del>
		1	PG EMC Gland PG21	Nickel Plate	1478885-6
		1	PG EMC Gland PG16	Nickel Plate	1478885-5
		5	PG EMC Gland PG13.5	Nickel Plate	1478885-4
		5	PG EMC Gland PG11	Nickel Plate	1478885-3
		5	PG EMC Gland PG9	Nickel Plate	1478885-2
		5	PG EMC Gland PG7	Nickel Plate	1478885-1
<b>Packaging Style</b>		<b>Bag Qty</b>	<b>Description</b>	<b>Finish</b>	<b>Part No.</b>

Part No.	Packing Label Description Line 1	Packing Label Description Line 2	Packing Label Description Line 3	Packing Label Description Line 4
1478885-1	EMC Gland with Locknut	PG7 (Long Thread 10mm)	Brass Nickel Plated	IP 68
1478885-2	EMC Gland with Locknut	PG9 (Long Thread 10mm)	Brass Nickel Plated	IP 68
1478885-3	EMC Gland with Locknut	PG11 (Long Thread 10mm)	Brass Nickel Plated	IP 68
1478885-4	EMC Gland with Locknut	PG13.5 (Long Thread 10mm)	Brass Nickel Plated	IP 68
1478885-5	EMC Gland with Locknut	PG16 (Long Thread 10mm)	Brass Nickel Plated	IP 68
1478885-6	EMC Gland with Locknut	PG21 (Long Thread 12mm)	Brass Nickel Plated	IP 68
<del>1478885-7</del>	EMC Gland with Locknut	PG29 (Long Thread 12mm)	Brass Nickel Plated	IP 68
1478885-8	EMC Gland with Locknut	PG36 (Long Thread 14mm)	Brass Nickel Plated	IP 68
<del>1478885-9</del>	EMC Gland with Locknut	PG42 (Long Thread 16mm)	Brass Nickel Plated	IP 68
<del>1-1478885-0</del>	EMC Gland with Locknut	PG48 (Long Thread 18mm)	Brass Nickel Plated	IP 68

OBSOLETE  
OBSOLETE

THIS DRAWING IS A CONTROLLED DOCUMENT.

DWN: P.Bates 06NOV2002  
 CHK: F.W.King 6-11-02  
 APVD: F.W.King 6-11-02

**Tyco Electronics** Tyco Electronics Corporation  
 Stanmore, Middlesex, HA7 4RS

NAME: EMC GLAND AND LOCKNUT  
 BRASS - NICKEL PLATE (PG7 - PG48)

DIMENSIONS: MM  
 TOLERANCES UNLESS OTHERWISE SPECIFIED:  
 0 PLC ± -  
 1 PLC ± -  
 2 PLC ± -  
 3 PLC ± -  
 4 PLC ± -  
 ANGLES ± -  
 FINISH -

APPLICATION SPEC: -  
 WEIGHT: -

MATERIAL: -

SIZE: A2 CAGE CODE: 00779 DRAWING NO: C=1478885 RESTRICTED TO: -  
 SCALE: 1:1 SHEET: 1 OF 1 REV: C1

CUSTOMER DRAWING

1478885

A

## X-ON Electronics

Largest Supplier of Electrical and Electronic Components

*Click to view similar products for [Circular Metric Connectors](#) category:*

*Click to view products by [TE Connectivity](#) manufacturer:*

Other Similar products are found below :

[1424048](#) [1021212](#) [600X518037X](#) [6STD09SAM99B70X](#) [6STD15PCR99B70A](#) [8R4000A16M020](#) [1200910002](#) [1201150041](#) [1203580030](#)  
[1200700064](#) [1200700263](#) [1200700416](#) [1200730102](#) [1200770002](#) [1-2823588-2](#) [130203-0054](#) [1300140026](#) [1300150099](#) [1-3637-600-5205](#)  
[1545399](#) [1594331](#) [1600413](#) [1612606](#) [1612618](#) [1614660](#) [1A4000-348](#) [CA06EW24-10P-B-03](#) [21036836414](#) [2823064-1](#) [1610759](#) [A1642LK-](#)  
[II-T](#) [1R3006A20M005](#) [41-01016](#) [41-40011](#) [41-40017](#) [42-00006](#) [42-01015](#) [4-22279-4](#) [4-22281-1](#) [4-22284-9](#) [43-00002](#) [43-00113](#) [43-00130](#)  
[43-01028](#) [43-01034](#) [43-01088](#) [43-01090](#) [43-01203](#) [43-01209](#) [43-01335](#)