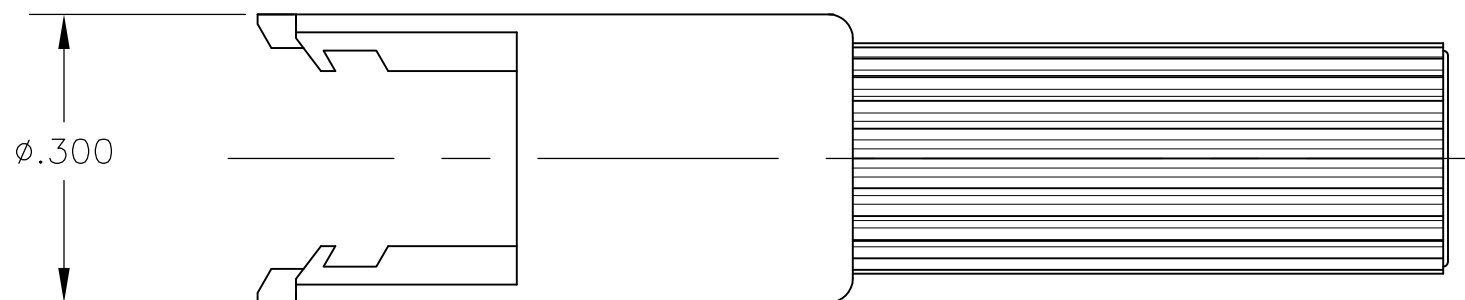
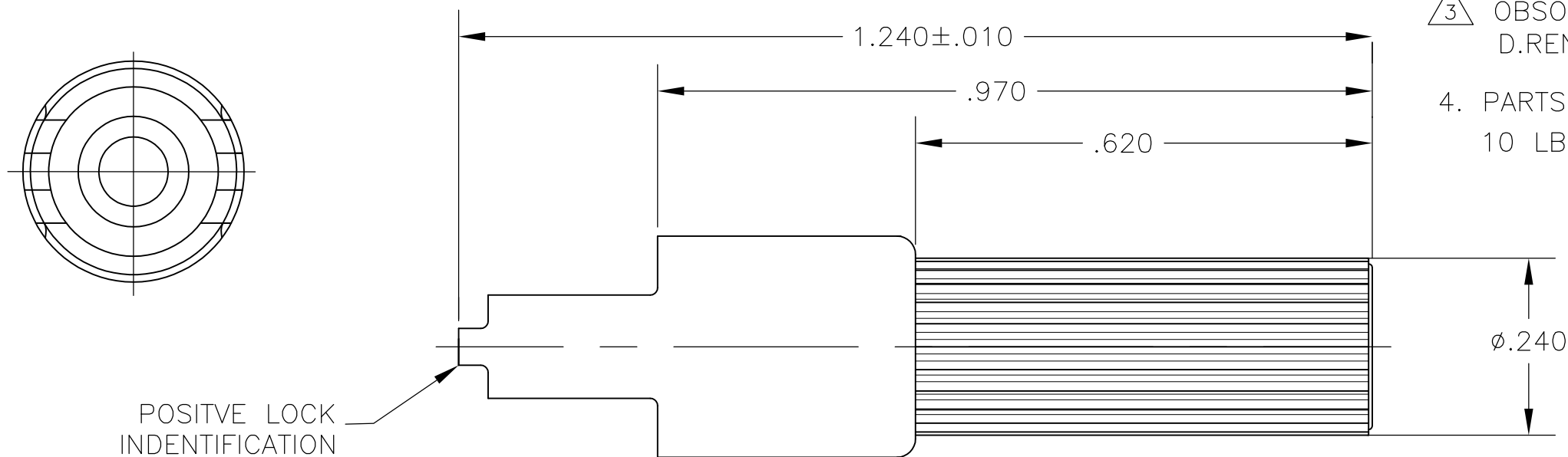


THIS DRAWING IS UNPUBLISHED. RELEASED FOR PUBLICATION  
 © COPYRIGHT BY TYCO ELECTRONICS CORPORATION. ALL RIGHTS RESERVED.

LOC CM DIST 00

REVISIONS					
P	LTR	DESCRIPTION	DATE	DWN	APVD
	H3	REVISED PER ECR-16-001655	15FEB2016	SC	DZ

1. TO BE USED WITH APPROPRIATE COMMERCIAL MATE-N-LOK(TM) PINS.
2. MATES WITH PLUG 480349.
3. OBSOLETE PARTS: OBSOLETE CIS STREAMLINING PER D.RENAUD/D.SINISI
4. PARTS SHALL HAVE AN EXTRACTION FORCE OF 10 LBS MINIMUM WHEN MATED WITH 480349 PARTS.



3	OBSOLETE	COLOR	PART NUMBER
		BLACK	<del>1-480351-9</del>
		GREEN	1-480351-5
		RED	1-480351-2
		NATURAL	1-480351-0
		COLOR	PART NUMBER

THIS DRAWING IS A CONTROLLED DOCUMENT.		DWN K. WHITAKER 15SEP2006	Tyco Electronics Corporation Harrisburg, PA 17105-3608		
DIMENSIONS: INCHES	TOLERANCES UNLESS OTHERWISE SPECIFIED: 0 PLC ± 1 PLC ± 2 PLC ±.005 3 PLC ± 4 PLC ± ANGLES ±0°30'	CHK D. COLEY 15SEP2006	NAME		
		APVD D. COLEY 15SEP2006	CAP, SINGLE CIRCUIT, COMMERCIAL MATE-N-LOK(TM)		
MATERIAL NYLON,94V-2	FINISH -	PRODUCT SPEC	SIZE	CAGE CODE	DRAWING NO
		APPLICATION SPEC	A300779		C-480351
		WEIGHT	RESTRICTED TO		
		CUSTOMER DRAWING		SCALE 5:1	SHEET 1 OF 1
				REV H3	

## X-ON Electronics

Largest Supplier of Electrical and Electronic Components

*Click to view similar products for [Pin & Socket Connectors](#) category:*

*Click to view products by [TE Connectivity](#) manufacturer:*

Other Similar products are found below :

[6450822-1](#) [770392-1](#) [794042-1](#) [796885-1](#) [8-794535-1](#) [881459-2](#) [R929993003](#) [1-350779-3](#) [1403611-1](#) [1-480349-5](#) [1586092-1](#) [1586129-1](#)  
[1586487-1](#) [1586681-4](#) [1586700-1](#) [1586065-1](#) [1586077-1](#) [1586368-1](#) [1586380-1](#) [1586680-5](#) [1586681-2](#) [1604996-1](#) [16-06-0038](#) [164164-5](#) [1-](#)  
[6609930-1](#) [172296-1](#) [1-794714-6](#) [19-09-2035](#) [1969804-1](#) [200503-1](#) [200788-2](#) [201046-7](#) [202648-4](#) [2029076-2](#) [2029090-4](#) [2029095-4](#) [2-](#)  
[66102-6](#) [925061-7](#) [926681-1](#) [293734-4](#) [293737-2](#) [1-765362-4](#) [1-794606-3](#) [1871534-1](#) [1969795-1](#) [1969798-1](#) [1969800-1](#) [200833-4](#)  
[2008625-2](#) [2029027-2](#)