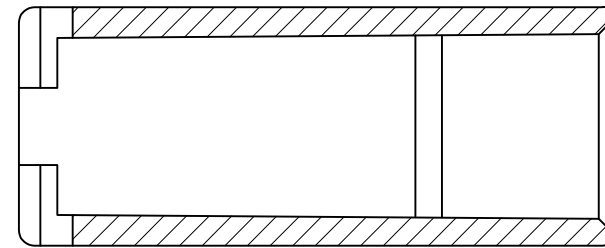


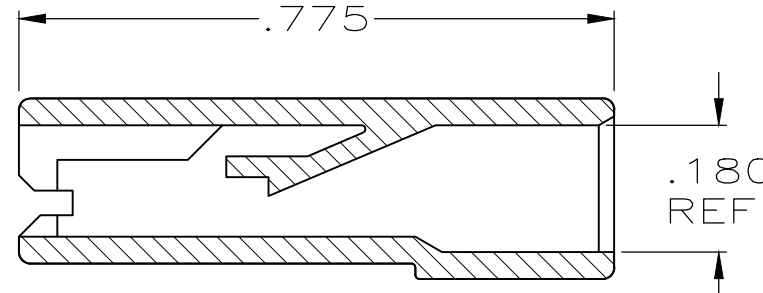
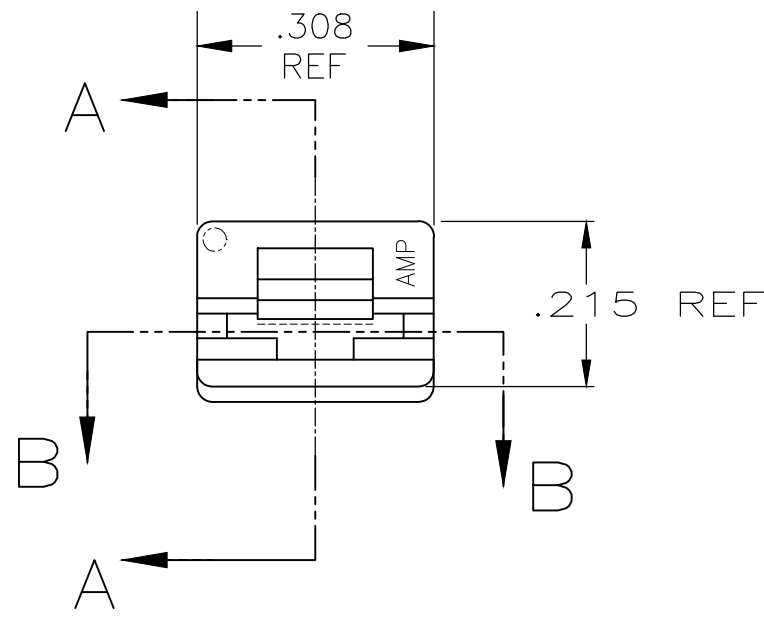
THIS DRAWING IS UNPUBLISHED. RELEASED FOR PUBLICATION  
 © COPYRIGHT - By - ALL RIGHTS RESERVED.

LOC	DIST	REVISIONS					
AF	50	P	LTR	DESCRIPTION	DATE	DWN	APVD
		AA1		REVISED PER ECR-18-019595	14DEC2018	BKW	DS

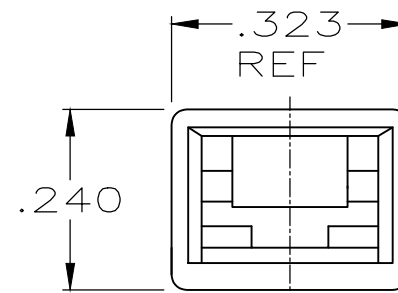
- 1 FOR FOREIGN PRODUCTION ONLY.
- 2 PRELIMINARY - NOT FOR PRODUCTION
- 3 POLYAMIDE ACCORDING TO IEC 60335-1, GLOW WIRE.
- 4 OBSOLETE PARTS: OBSOLETE CIS STREAMLINING PER D.RENAUD/D.SINISI
- 5 ACCEPTS 187 SERIES FASTONS BUDGET AND PREMIER STYLE RECEPTACLES
- 6 SUPERCEDE 2-480435-1 WITH 2-480435-3



SECTION B-B  
ROTATED 90° CW



SECTION A-A



	BLACK	LCP-200°C	2-480435-3
	NATURAL	PA6 NYLON, V0	2-480435-2
6	SUPERCEDED	NATURAL	3 66 NYLON, UL94, V0
	OBSOLETE	NATURAL	UL94 5VA RATED
	1	NATURAL	3 UL94, V2
4	OBSOLETE	1	NATURAL
	1	DYED BLACK	6/6 NYLON
4	OBSOLETE	1	DYED RED
		NATURAL	
	FINISH	MATERIAL	PART NO

NATURAL	66 NYLON V0	3-480435-1
BLACK	66/6 NYLON V0	480435-2
NATURAL	66/6 NYLON V0	480435-1
FINISH	MATERIAL	PART NO

THIS DRAWING IS A CONTROLLED DOCUMENT.

DWN	JR RUTH	2/4/91
CHK	P FORTNEY	2/4/91
APVD	R KUZO	2/4/91
PRODUCT SPEC	-	
APPLICATION SPEC	-	
WEIGHT	-	

**STE** TE Connectivity

NAME: HOUSING, RECEPTACLE, FASTON, .187 SERIES

SIZE	CAGE CODE	DRAWING NO	RESTRICTED TO
A3	00779	C-480435	-

CUSTOMER DRAWING SCALE: 4:1 SHEET: 1 OF 1 REV: AA1

## X-ON Electronics

Largest Supplier of Electrical and Electronic Components

*Click to view similar products for [Terminals](#) category:*

*Click to view products by [TE Connectivity](#) manufacturer:*

Other Similar products are found below :

[HT-13-10](#) [71M-250-32-NB](#) [01-2065-1-0216](#) [00581P0075](#) [M10-10RX](#) [M10BCK](#) [60205-1](#) [604200-1](#) [60598-1-CUT-TAPE](#) [60617-1-C](#) [60873-1](#) [M14-516R/SK](#) [M14-6RSX](#) [M18-8FBX](#) [M18-8R/LX](#) [M18BCK](#) [61314-6-C](#) [61-S](#) [61-SN-A](#) [62-NBM-A](#) [63-S](#) [640179-1](#) [640917-2-CUT-TAPE](#) [6501550002](#) [66107-2-C](#) [696683-1](#) [696834-1](#) [696861-1](#) [696931-1](#) [696999-1](#) [M8-516RK](#) [M86700006](#) [MA250DMFMX-A](#) [701-2007](#) [701-2307](#) [701-7761-03](#) [70F-110-32-PB](#) [718-N-A](#) [71M-187-20-NBL](#) [71M-250-32-NBL](#) [72F-187-20-NBL](#) [72M-250-32-NBL](#) [7310](#) [73F-250-32](#) [73F-250-32-NL](#) [F14-10C](#) [F-1M](#) [751-250](#) [76650-5002](#) [76828-149](#)