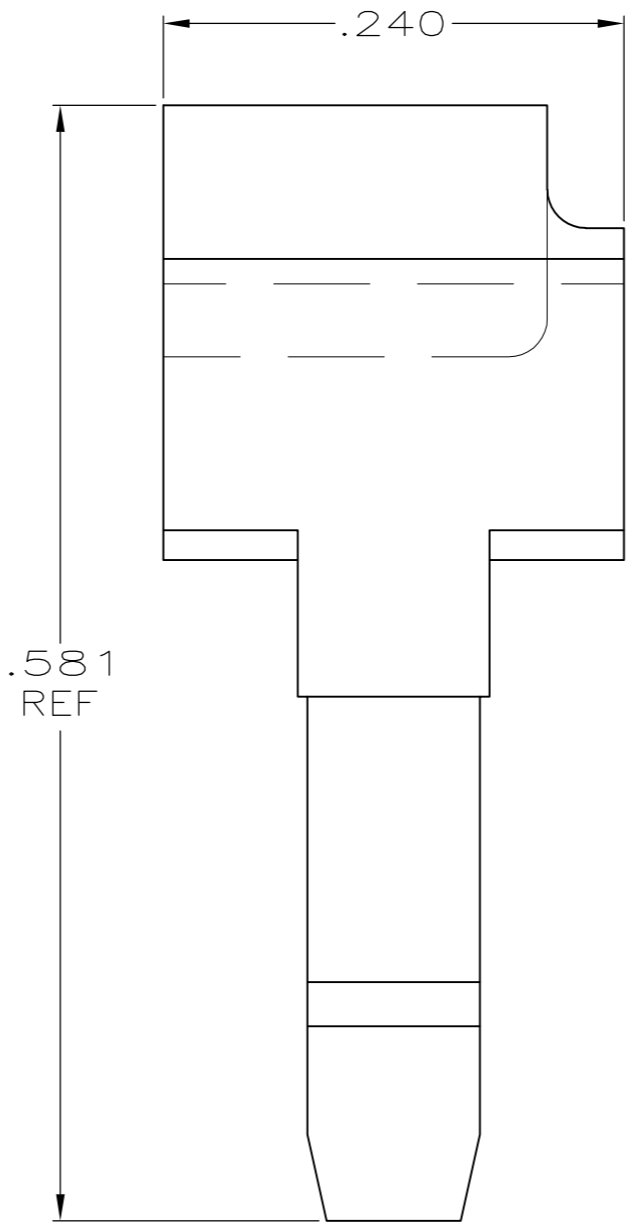
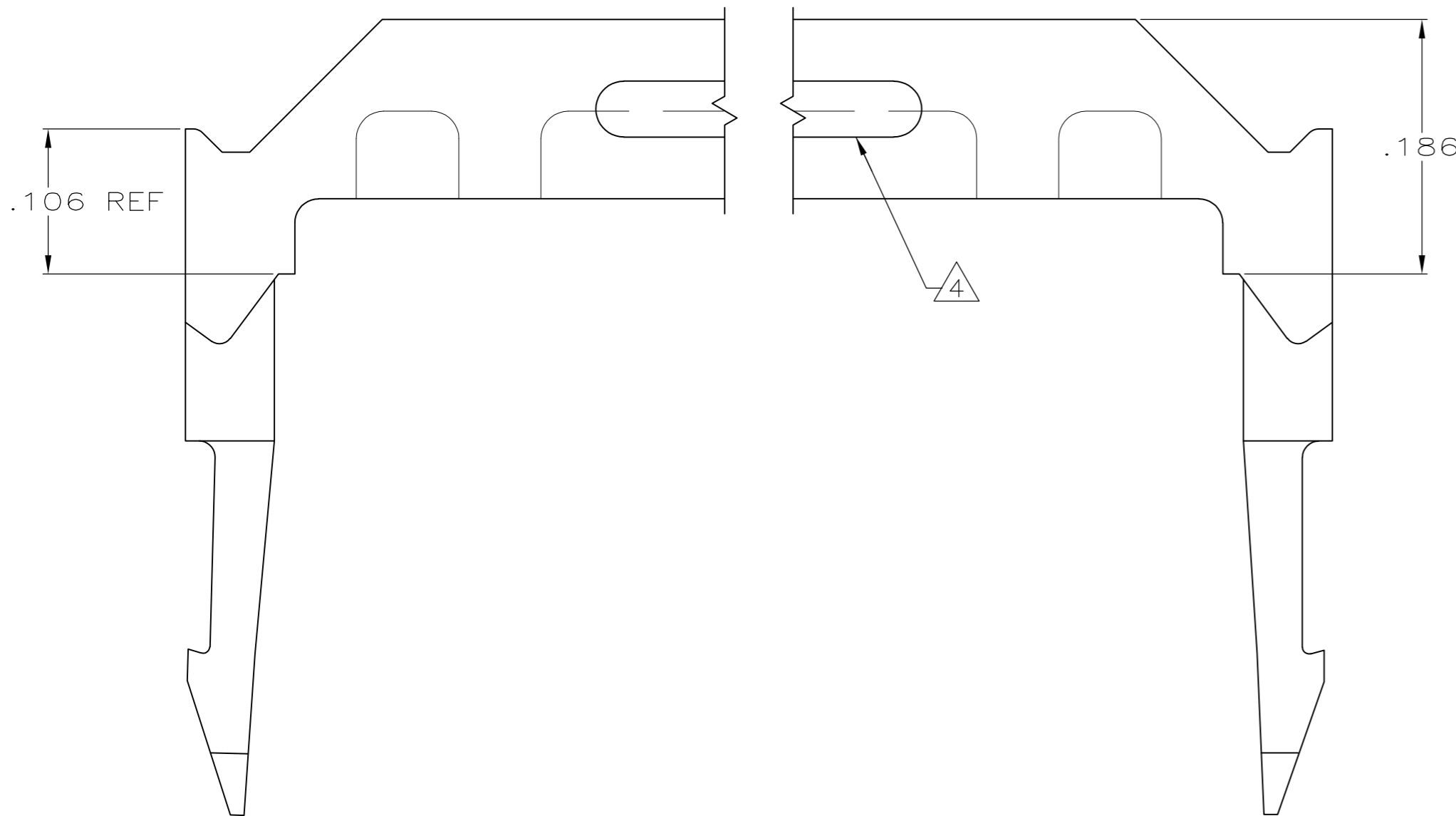
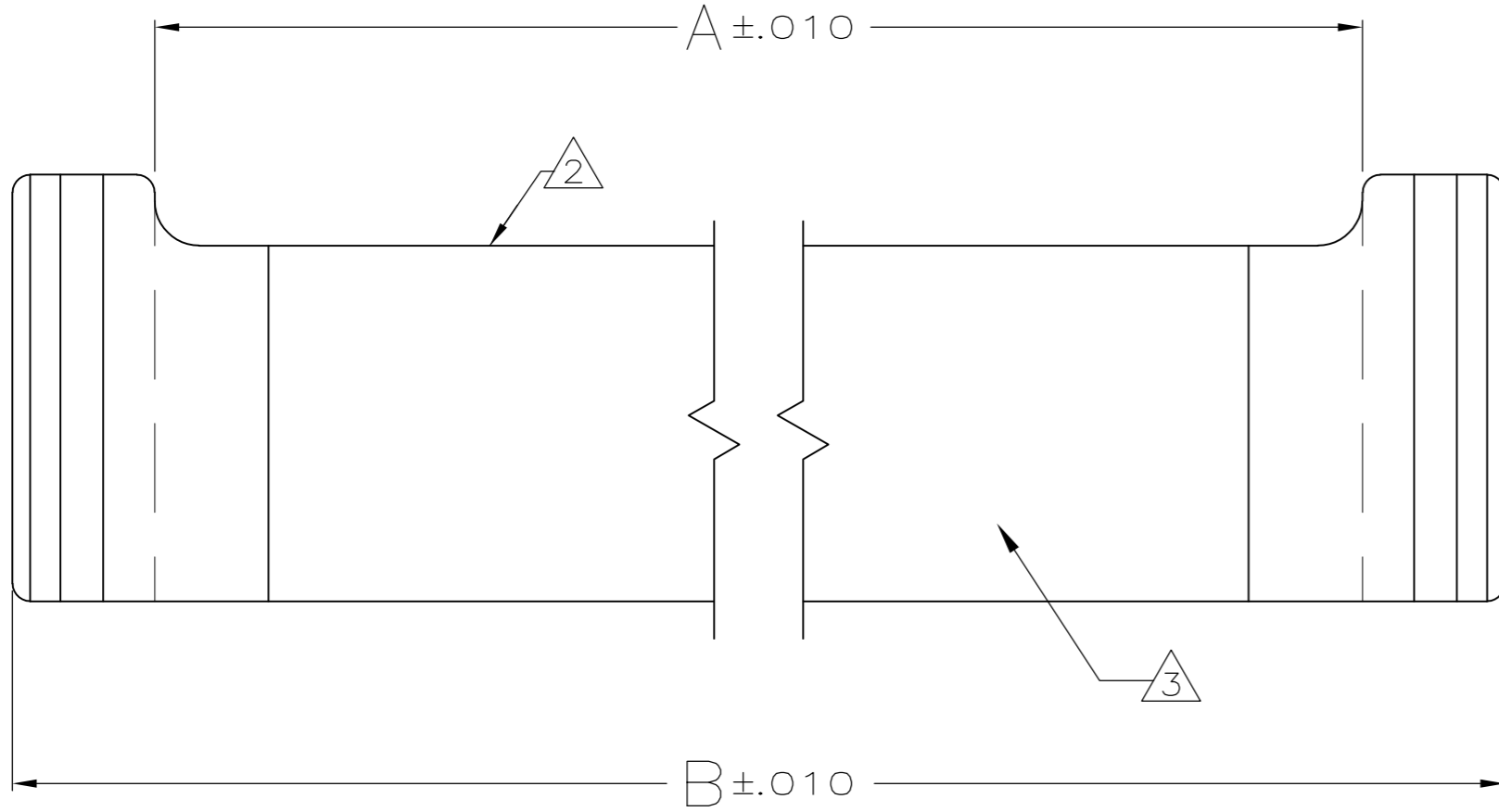


THIS DRAWING IS UNPUBLISHED. RELEASED FOR PUBLICATION
 © COPYRIGHT - By - ALL RIGHTS RESERVED.

LOC	DIST	REVISIONS			
P	LTR	DESCRIPTION	DATE	DWN	APVD
GP	00	H3	REVISED PER ECO-11-005033	23MAR11	RK HMR



- ① MATERIAL: FLAME RETARDANT THERMOPLASTIC, COLOR: BLACK.
- ② AMP TRADEMARK, MOLD CAVITY LETTER, AND MANUFACTURING ORIGIN (OPTIONAL) TO BE MOLDED ON THIS SURFACE.
- ③ ALTERNATE LOCATION FOR AMP TRADEMARK AND CAVITY ID.
- ④ CORING SLOTS IN BOTH SIDES AS INDICATED, OR IN UNDERSIDE OF PART.

1.990	1.834	36	1-499252-5
1.290	1.134	22	1-499252-4
3.390	3.234	64	1-499252-3
1.690	1.534	30	1-499252-2
2.390	2.234	44	1-499252-1
1.390	1.234	24	1-499252-0
.890	.734	14	499252-9
.990	.834	16	499252-8
3.190	3.034	60	499252-7
1.890	1.734	34	499252-6
.690	.534	10	499252-5
2.690	2.534	50	499252-4
1.490	1.334	26	499252-3
1.190	1.034	20	499252-2
2.190	2.034	40	499252-1
B	A	NO OF POSN	PART NUMBER

THIS DRAWING IS A CONTROLLED DOCUMENT.

DWN	J GALLUCCI BG	2-23-90
CHK	H.MOLL	3-5-90
APVD	-	-
PRODUCT SPEC	-	-
APPLICATION SPEC	-	-
WEIGHT	-	-
CUSTOMER DRAWING	SCALE 15:1	SHEET 1 of 1

TE Connectivity
 STRAIN RELIEF, RECEPTACLE CONNECTOR, FLAT CABLE, AMP-LATCH

SIZE	CAGE CODE	DRAWING NO	RESTRICTED TO
A2	00779	C=499252	-
REV	H3		

X-ON Electronics

Largest Supplier of Electrical and Electronic Components

Click to view similar products for [Headers & Wire Housings](#) category:

Click to view products by [TE Connectivity](#) manufacturer:

Other Similar products are found below :

[892-18-020-10-001101](#) [58102-G61-06LF](#) [582553-1](#) [0009485154](#) [009176003701906](#) [0050291907](#) [LY20-4P-DT1-P1E-BR](#) [02.125.8002.8](#)
[609-3404](#) [61062-3](#) [61082-181009](#) [622-3653LF](#) [63453-116](#) [636-1030](#) [636-1427](#) [636-3427](#) [636-4007](#) [641938-9](#) [641991-4](#) [644827-2](#) [65817-](#)
[010LF](#) [65817-015LF](#) [65863-015LF](#) [66207-023LF](#) [67095-007LF](#) [67601157](#) [68645-018](#) [68648-049](#) [70.362.1628.0](#) [70-4210](#) [70-4226B](#) [70-](#)
[4853B](#) [707-5020](#) [707-5028](#) [71.350.2428.0](#) [71918-208LF](#) [71961-016LF](#) [733-134](#) [733-162](#) [754199-000](#) [760-3052](#) [787-8014-00](#) [79531-3000](#)
[FCN-360C032-B](#) [FCN-367T-T012/H](#) [FCN-723D010/2](#) [80.063.4001.1](#) [800-90-001-10-001000](#) [800-90-010-10-002000](#) [801-43-002-10-013000](#)