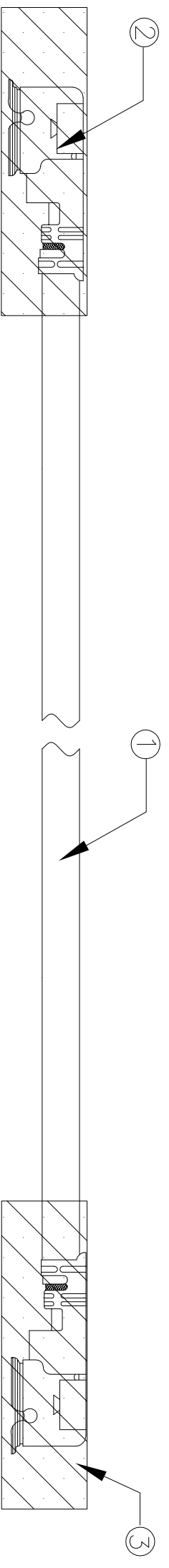
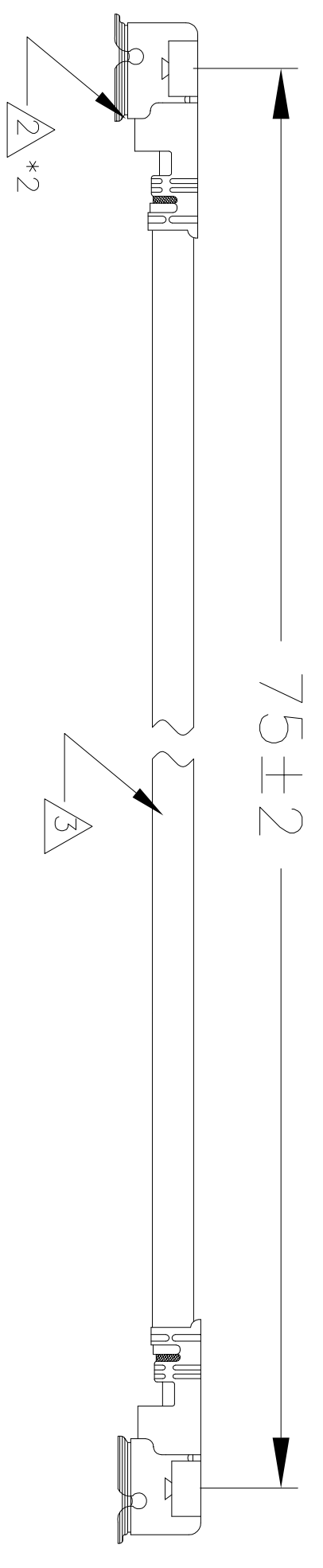


LOC	DIST	REVISONS		DATE	DWN	APVD
GP	00	P	LTR	DESCRIPTION	CP	LZ
		A	NEW RELEASE	12FEB09	CP	LZ



- NOTES:
1. CABLE ASSEMBLY TO BE 100% TESTED FOR OPENS, SHORTS AND CONTINUITY
 HI-POT: 200 VDC FOR 100MS
 INSULATION RESISTANCE: 50M OHMS MIN
 CONTINUITY RESISTANCE: 2 OHMS MAX
 FREQUENCY RANGE: DC TO 6 GHZ
 VSWR: 1.5:1 MAX
 2. CONNECTOR: TYPE III U.FL
 3. SUPPLIER: I-PEX 20278-112R-13
 CABLE: 1.13MM OD, JACKET RED, 50 OHMS FEP INSULATED
 SUPPLIER: GBE OR TE ENGINEERING APPROVED SUPPLIER
 4. TWO END U.FL CONNECTORS IN THE SAME POSITION
 5. PRODUCT AND PROCESSING MUST MEET REQUIREMENTS OF TYCO ELECTRONICS STANDARD 230-702

THIS DRAWING IS A CONTROLLED DOCUMENT.

DIMENSIONS: mm [INCHES]		TOLERANCES UNLESS OTHERWISE SPECIFIED:		DWN		12FEB09		Tyco Electronics Corporation Harrisburg, PA 17105-3608	
0	PLC	±	-	Chen Ping	12FEB09	NAME	FWT3 Ericsson UMTS/Aux cable assembly red, 75mm, 0degree		
1	PLC	±	-	CHK	12FEB09	SIZE	CAGE CODE	DRAWING NO	RESTRICTED TO
2	PLC	±	-	APVD	12FEB09	A3	00779	1513279	—
3	PLC	±	-	Product spec		CUSTOMER DRAWING			
4	PLC	±	-	Application spec		SCALE	N.T.S.	SHEET	1 OF 1
FINISH	—	±	-	WEIGHT	—	REV A			

X-ON Electronics

Largest Supplier of Electrical and Electronic Components

Click to view similar products for [Coaxial Cables](#) category:

Click to view products by [TE Connectivity](#) manufacturer:

Other Similar products are found below :

[89880-003-1000](#) [CY2389-000](#) [8221-010-U1000](#) [9116-010-U500](#) [1322R-010-1000](#) [1807A-B59-U1000](#) [2020K8421-9X-CS3417](#) [9251-010-1000](#) [9275-010-U1000](#) [935240-000](#) [980704-001](#) [CF2823-000](#) [33312-010-500](#) [CZ1589-000](#) [5022W0809-0CS3263](#) [10610-4-4](#) [EF8108-000](#) [535719-000](#) [1673B TIN100](#) [672525-001](#) [144517-000](#) [735A1-008-1000](#) [134655-000](#) [8212-010-U500](#) [480414-000](#) [7915A 009U1000](#) [5024A1311-0](#) [1281S5 010250](#) [1281S5 000250](#) [1530A 010U1000](#) [1505A 0081000](#) [9272 006U1000](#) [9248 010U1000](#) [7809WB 010500](#) [9244 0101000](#) [1694A 0081000](#) [1190A 0101000](#) [8241F J5C1000](#) [1674A TIN50](#) [7915A 0091000](#) [TRCH-50-2](#) [9066 0031000](#) [7805R 008100](#) [1674A TIN100](#) [9116SB 0101000](#) [1525A 0031000](#) [9271 0061000](#) [1613A 0101000](#) [1807A B591000](#) [5339Q5 009U500](#)