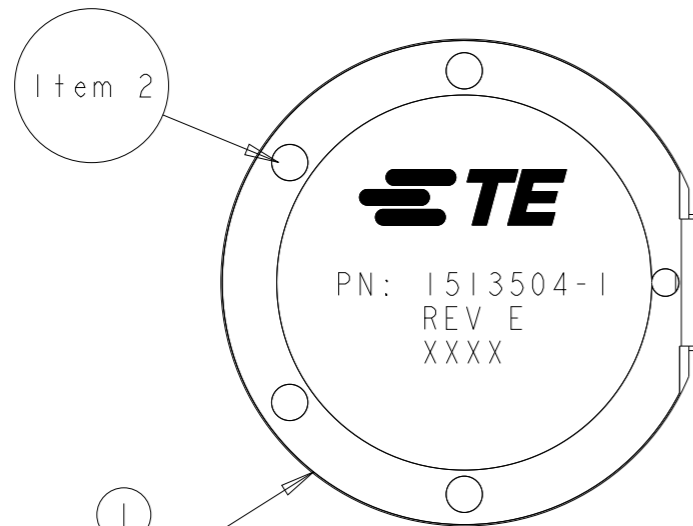


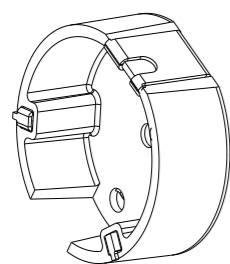
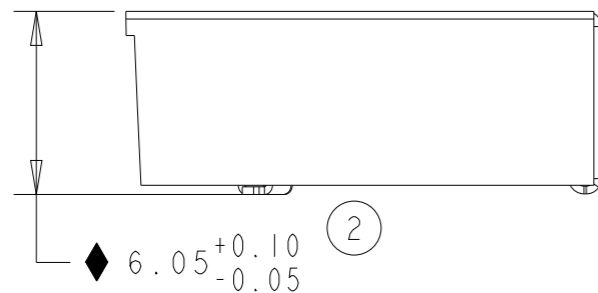
LOC HQ DIST 00

REVISIONS

P	LTR	DESCRIPTION	DATE	DWN	APVD
D1		REVISED PER ECO-11-005027	12MAR2011	RK	HMR
D2		REV PER ECO-14-008668	11JUN2014	KF	PG
E		REVISED PER ECN-21-116564	09SEP2021	DW	CY

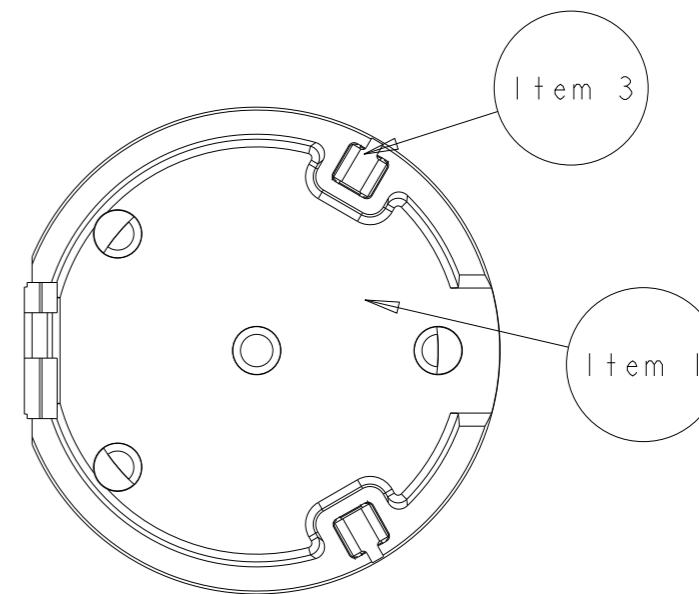
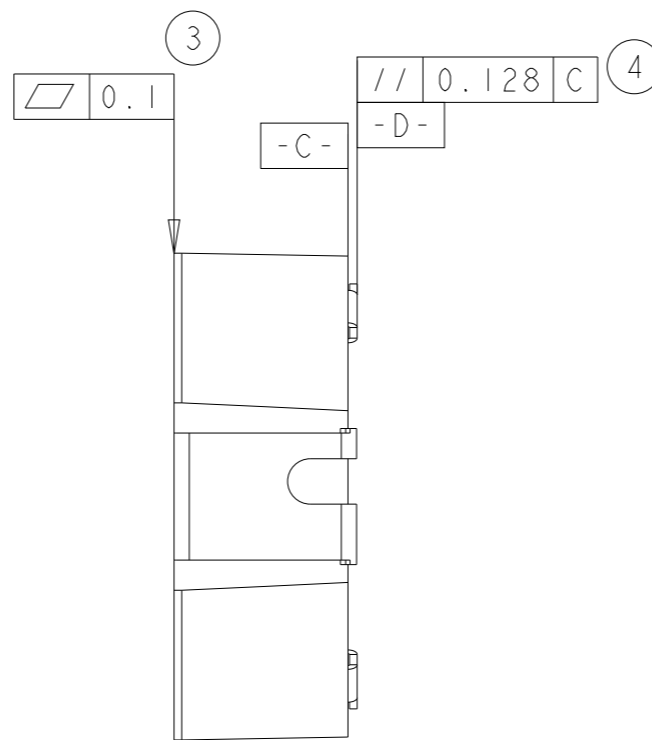


◆ $\varnothing 16.00 \pm 0.1$



1513504-1
SCALE 2:1

◆ ONGOING STATISTICAL PROCESS CONTROL REQUIRED
(TOTAL 2 PCS.)



NOTES:

- Material - LCP DuPont Zenite 6130L, 30% glass filled, black color
- General tolerance block applies unless otherwise specified.
- Parts are compliant to RoHS standards per TE CONNECTIVITY standard TEC-138-702
- Part will be identified with part number, rev letter, TE logo and 4 digit date code. 1st two digits for the year and the 2nd two digits for the week.
- Consult TE CONNECTIVITY data sheet 1513504

THIS DRAWING IS A CONTROLLED DOCUMENT.

DWN DJL 13FEB2006

CHK -

APVD -

PRODUCT SPEC -

APPLICATION SPEC -

WEIGHT -

CUSTOMER DRAWING

TE TE Connectivity

NAME
Antenna
Bluetooth/WLAN
Assembly 1513504-1

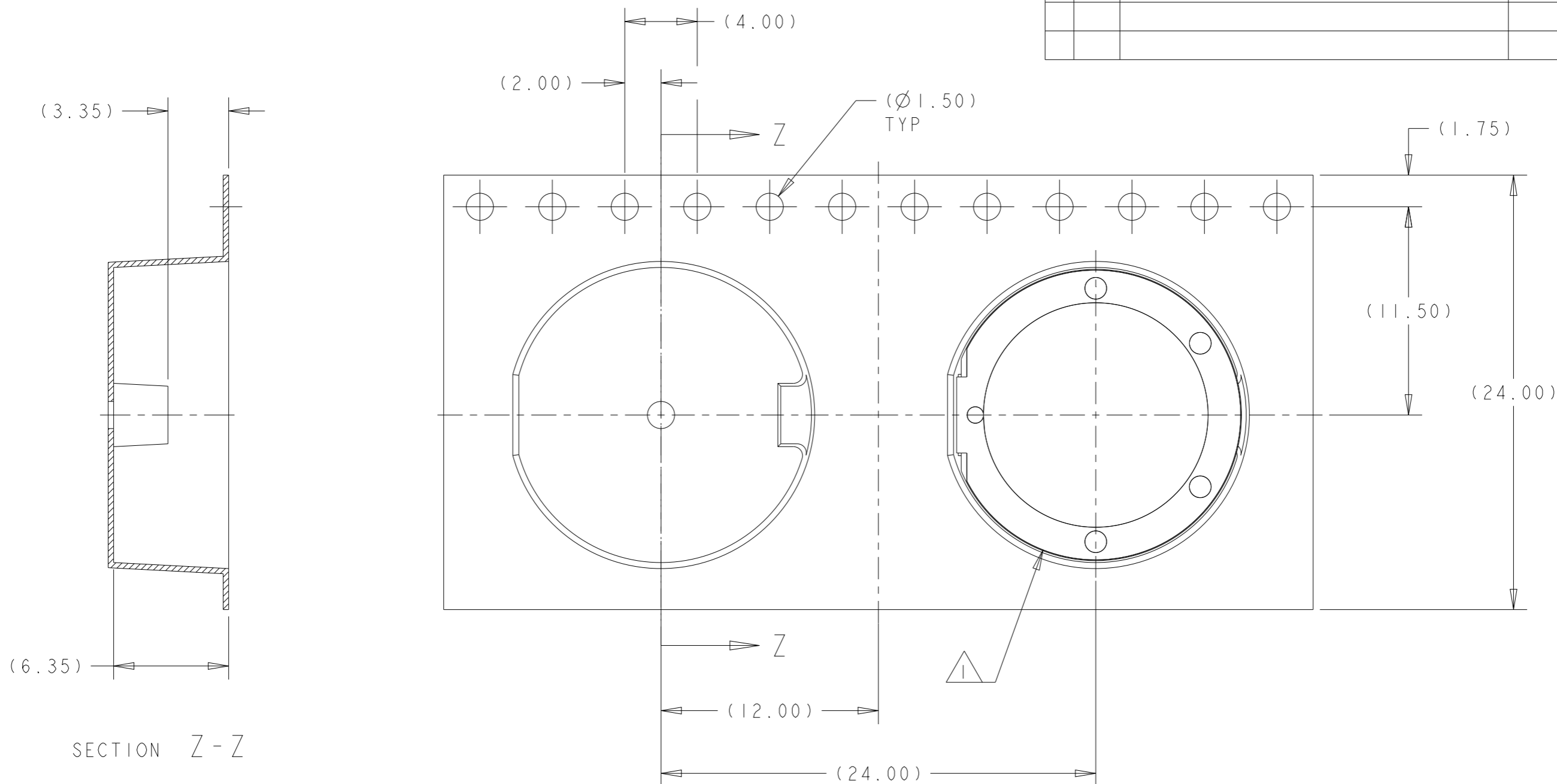
SIZE CAGE CODE DRAWING NO RESTRICTED TO

A300779 C-1513504

SCALE 4:1 SHEET 1 OF 2 REV E

DIMENSIONS:	TOLERANCES UNLESS OTHERWISE SPECIFIED:
mm	
	0 PLC ±0.10
	1 PLC ±0.10
	2 PLC ±0.05
	3 PLC ±0.05
	4 PLC ±0.01
	ANGLES ±1°
MATERIAL -	FINISH -

P	LTR	DESCRIPTION	DATE	DWN	APVD
-	-	SEE SHEET 1	-	-	-

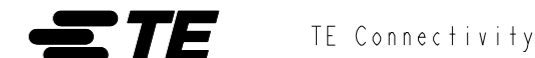


1 ORIENT PARTS AS SHOWN.

2. PARTS ARE COMPLIANT TO RoHS STANDARDS PER TE CONNECTIVITY STANDARD TEC-138-702.

3. ALL INFORMATION ON THIS DRAWING IS CONFIDENTIAL AND PROPRIETARY TO TE CONNECTIVITY.

THIS DRAWING IS A CONTROLLED DOCUMENT.		DWN	13FEB2006	
DIMENSIONS: mm		CHK	-	
TOLERANCES UNLESS OTHERWISE SPECIFIED:		APVD	-	
0 PLC ±0.10		PRODUCT SPEC	-	
1 PLC ±0.10		APPLICATION SPEC	-	
2 PLC ±0.05		WEIGHT	-	
3 PLC ±0.05		SIZE	A3	00779
4 PLC ±0.01		CAGE CODE	C-1513504	
ANGLES ±1°		DRAWING NO	1513504	
FINISH		RESTRICTED TO	-	
MATERIAL		CUSTOMER DRAWING	SCALE	4:1
-		SHEET	2	OF 2
-		REV	E	



Antenna Bluetooth/WLAN Assembly 1513504-1

X-ON Electronics

Largest Supplier of Electrical and Electronic Components

Click to view similar products for [Antennas](#) category:

Click to view products by [TE Connectivity](#) manufacturer:

Other Similar products are found below :

[GAN30084EU](#) [930-033-R](#) [GW17.07.0250E](#) [1513563-1](#) [EXE902SM](#) [APAMPG-117](#) [MAF94383](#) [W3908B0100](#) [W6102B0100](#) [YE572113-30RSMM](#) [108-00014-50](#) [66089-2406](#) [SPDA17RP918](#) [A09-F8NF-M](#) [A09-F5NF-M](#) [RGFRA1903041A1T](#) [W3593B0100](#) [W3921B0100](#) [SIMNA-868](#) [SIMNA-915](#) [SIMNA-433](#) [W1044](#) [W1049B090](#) [A75-001](#) [WTL2449CQ1-FRSMM](#) [CPL9C](#) [EXB148BN](#) [0600-00060](#) [TRA9020S3PBN-001](#) [Y4503](#) [GD5W-28P-NF](#) [MA9-7N](#) [GD53-25](#) [GD5W-21P-NF](#) [C37](#) [MAF94051](#) [MA9-5N](#) [EXD420PL](#) [B1322NR](#) [QWFTB120](#) [MAF94271](#) [MAF94300](#) [GPSMB301](#) [FG4403](#) [AO-AGSM-OM54](#) [5200232](#) [MIKROE-2349](#) [WCM.01.0111](#) [MIKROE-2393](#) [MIKROE-2352](#)