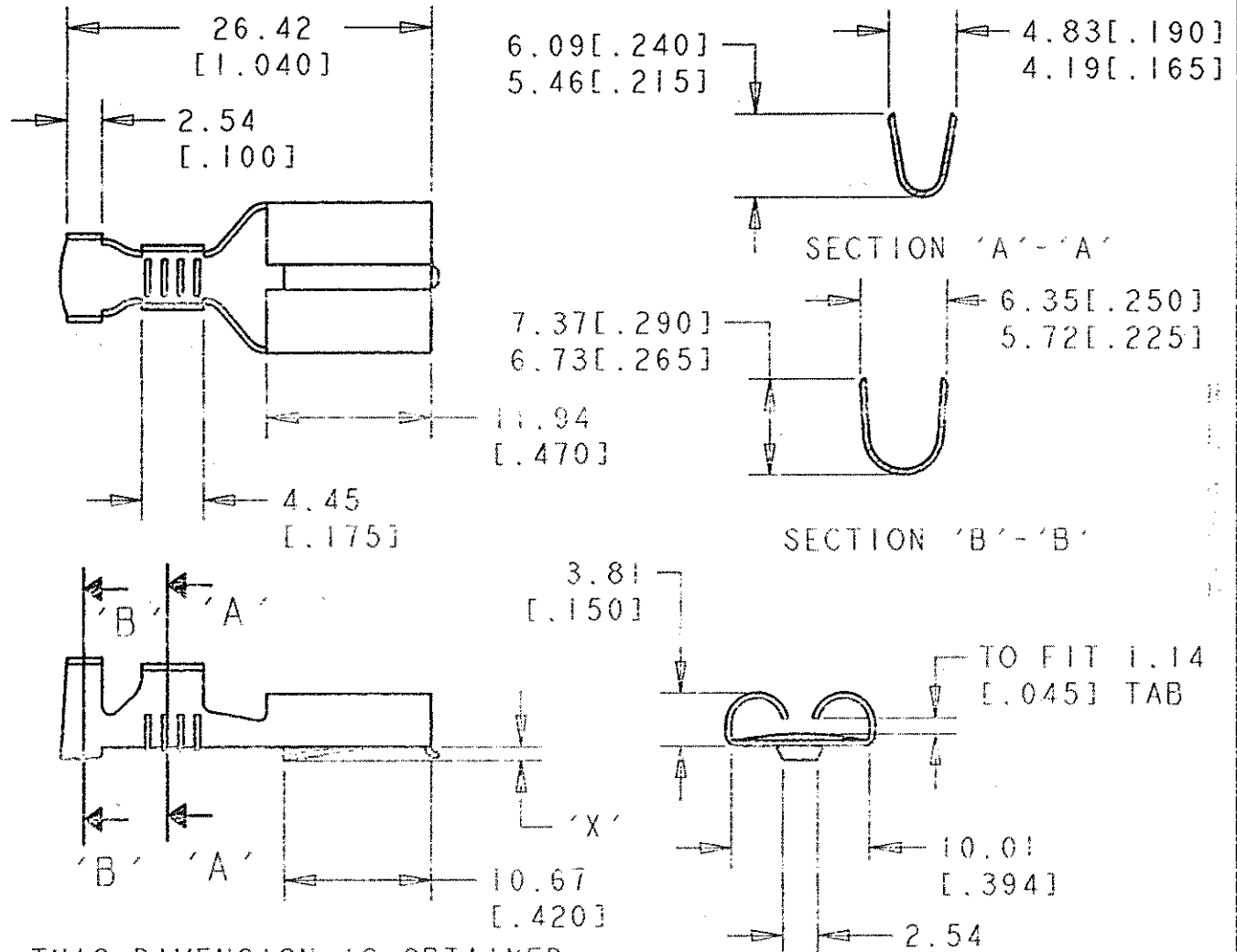


LOC	E					
P		LTR	DESCRIPTION	DATE	DWN	APVD
		AC2	REVISED PER ECO-11-005150	28MAR11	RK	HMR



* THIS DIMENSION IS OBTAINED DURING CRIMPING CYCLE.

WIRE RANGE: -4-6mm² 4.06-5.33 [.160-.210] **⚠** OBSOLETE PARTS: OBSOLETE CIS STREAMLINING PER D.RENAUD/D.SINISI

1.68 (.066)	BRASS	EL. TIN	PAPER INTERLEAVED	151667-7
	PHOS. BRONZE	EL. TIN	⚠ OBSOLETE	151667-6
	PHOS. BRONZE	SILVER PLT.	OBSOLETE	151667-5
	PHOS. BRONZE			151667-4
2.54 (.100)	BRASS		⚠ OBSOLETE	151667-3
1.68 (.066)	BRASS	EL. TIN		151667-2
* 2.54 (.100)	BRASS		⚠ OBSOLETE	151667-1
1.68 (.066)	BRASS			151667
DIM 'X'	MATERIAL	FINISH	REMARKS	PART NUMBER

RELEASED FOR PUBLICATION
ALL RIGHTS RESERVED.
BY
COPYRIGHT

DIMENSIONS IN m. m	DWN	D. R. TERRY	17-3-98	MATERIAL	0.411.0161THR AND SEE LIST	FINISH	SEE LIST
	CHR	F W-K	17-3-98	TE Connectivity			
TOLERANCES UNLESS OTHERWISE SPECIFIED:	APVD	D. BARRATT	1-7-85				
LINEAR: - ±0.5	PRODUCT SPEC	.375 SERIES FASTIN-FASTON RECEPT.					
ANGULAR: - ±1°	APPLICATION SPEC	SIZE	A4	CAGE CODE	00779	DRAWING NO	C-151667
 THIRD ANGLE PROJECTION	WEIGHT	CUSTOMER DRAWING					
	SCALE	2:1	SHEET	1	OF	1	REV AC2

X-ON Electronics

Largest Supplier of Electrical and Electronic Components

Click to view similar products for [Terminals](#) category:

Click to view products by [TE Connectivity](#) manufacturer:

Other Similar products are found below :

[00-054007-01074-6](#) [00-054007-70206-1](#) [00-054007-70210-8](#) [00-054007-70217-7](#) [00-054007-70226-9](#) [00-054007-70228-3](#) [00-054007-70248-1](#) [00-054007-70256-6](#) [00-054007-70301-3](#) [00-054007-70316-7](#) [0-0320562-0](#) [00-054007-49560-4](#) [00-054007-70209-2](#) [00-054007-70225-2](#) [00-054007-70227-6](#) [00-054007-70231-3](#) [00-054007-70241-2](#) [00-054007-70242-9](#) [00-054007-70244-3](#) [00-054007-70246-7](#) [00-054007-70263-4](#) [00-054007-70288-7](#) [00-054007-70290-0](#) [00-054007-70300-6](#) [00-054007-70304-4](#) [01-2065-1-0216](#) [01-2900-1-04412](#) [00581P0075](#) [600TS-10](#) [60205-1](#) [604200-1](#) [605601-1](#) [60598-1-CUT-TAPE](#) [61314-6-C](#) [61810-3](#) [61-S](#) [61-SN](#) [626-0194](#) [62-NBM-A](#) [62-SN](#) [62-SP](#) [63-S](#) [640179-1](#) [M55155/059I03](#) [M55155/079C01](#) [M55155/099H02](#) [M55155/109H01](#) [M55155/109H02](#) [M55155/12XH05](#) [M55155/16XH02](#)