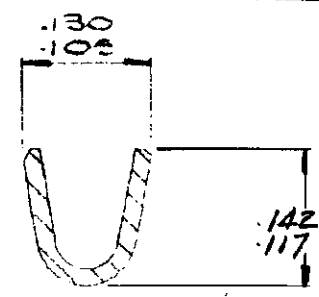
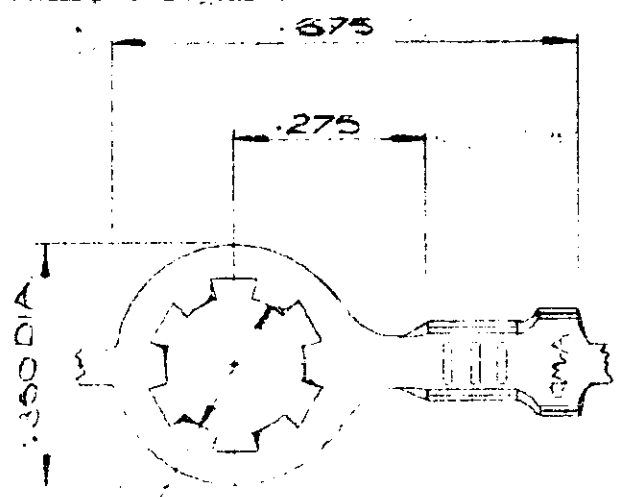


AM ANGLE (AMERICAN) PROJECTION

DIMENSIONS IN INCHES TO 1/32" SCALE PRINT

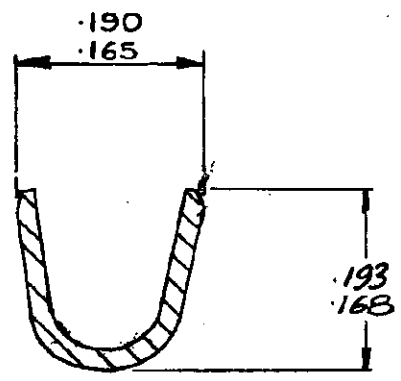
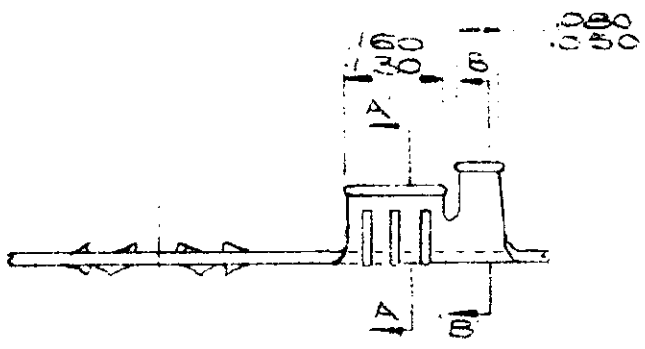
ENGINEERING OFFICE MASTER

C 152301



SECTION A-A
SCALE 6:1

STUD HOLE .205 DIA
(TO SUIT 2 BA. STUD)
± 5MM STUD.



SECTION B-B
SCALE 6:1

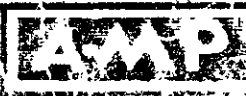
C-152301-3	STEEL	NICKEL PL
C-152301-2	STEEL	TIN PLATE
C-152301-1	STEEL	NONE
PART NO	MATERIAL	FINISH

ENGINEERING OFFICE MASTER

© AIRCRAFT MARINE PRODUCTS
GREAT BRITAIN LTD 1965

CUSTOMER COPY
REFERENCE ONLY

MATERIAL AND FINISH
C18 THICK
SEE TABLE



AIRCRAFT MARINE PRODUCTS
GREAT BRITAIN LTD
STANTON ROAD, HIDDEN

B	HOLE SIZE INCREASED TO ACCOMMODATE SM950	PS	16574
A	INSULATION RANGE WAS .100 - .120 DIA	W	D 8 65
LTR	REVISION F-1000	DR	CHK
E Z C W 7 65		DATE	
J Serrano		DATE	

WIRE - RANGE - RESISTION TYPE
20-16 110-130 DM

TOLERANCE EXCEPT AS NOTED
SCALE 4:1

LOC A NO C-152301

SHAKE PROOF RING TONGUE

PRINT DIST

X-ON Electronics

Largest Supplier of Electrical and Electronic Components

Click to view similar products for [Terminals](#) category:

Click to view products by [TE Connectivity](#) manufacturer:

Other Similar products are found below :

[00-054007-01074-6](#) [00-054007-70206-1](#) [00-054007-70210-8](#) [00-054007-70217-7](#) [00-054007-70226-9](#) [00-054007-70228-3](#) [00-054007-70248-1](#) [00-054007-70256-6](#) [00-054007-70301-3](#) [00-054007-70316-7](#) [00-054007-49560-4](#) [00-054007-70209-2](#) [00-054007-70225-2](#) [00-054007-70227-6](#) [00-054007-70231-3](#) [00-054007-70241-2](#) [00-054007-70242-9](#) [00-054007-70244-3](#) [00-054007-70246-7](#) [00-054007-70263-4](#) [00-054007-70288-7](#) [00-054007-70290-0](#) [00-054007-70300-6](#) [00-054007-70304-4](#) [01-2065-1-0216](#) [01-2900-1-04412](#) [00581P0075](#) [600TS-10](#) [60205-1](#) [604200-1](#) [605601-1](#) [60598-1-CUT-TAPE](#) [61314-6-C](#) [61810-3](#) [61-S](#) [61-SN](#) [626-0194](#) [62-NBM-A](#) [62-SN](#) [62-SP](#) [63-S](#) [640179-1](#) [M55155/059I03](#) [M55155/079C01](#) [M55155/099H02](#) [M55155/109H01](#) [M55155/109H02](#) [M55155/12XH05](#) [M55155/16XH02](#) [M55155/29-5S](#)