

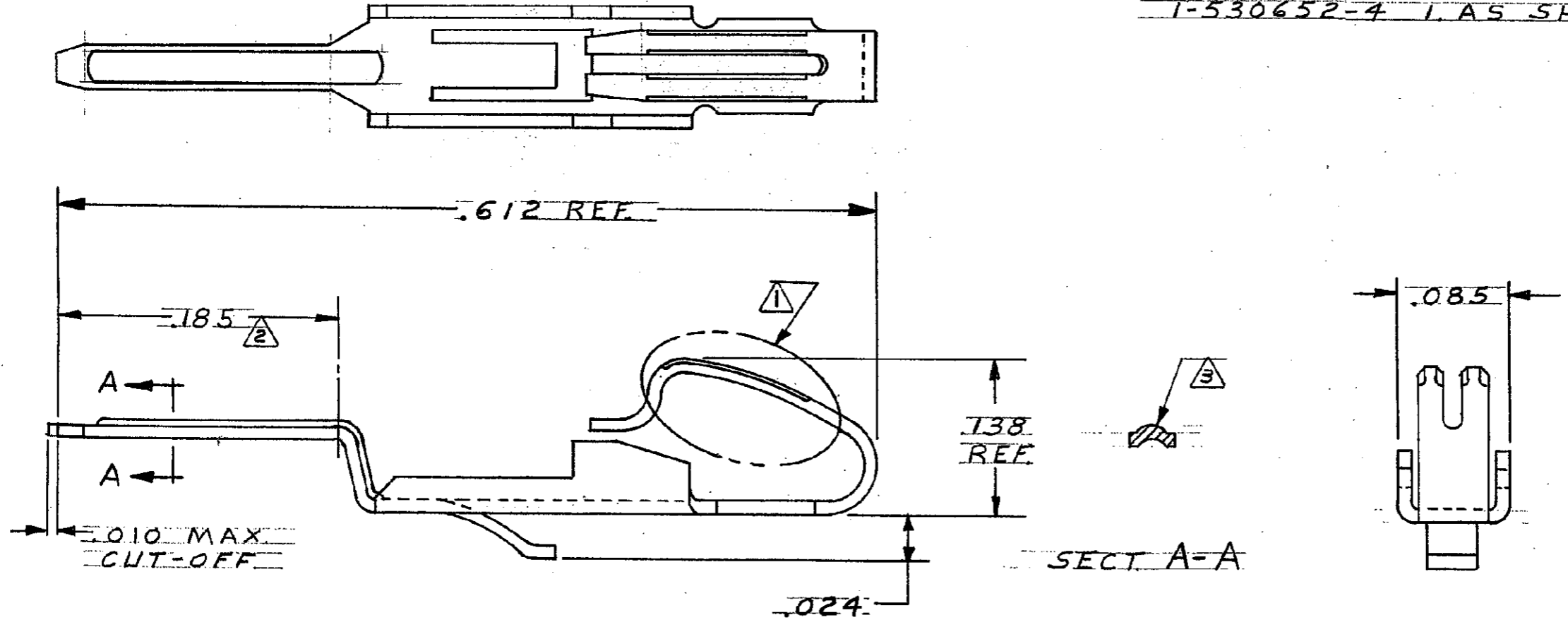
DRAWING MADE IN THIRD ANGLE PROJECTION

© COPYRIGHT 19 75 BY AMP INCORPORATED, HARRISBURG, PA.
 ALL INTERNATIONAL RIGHTS RESERVED, AMP INCORPORATED PRODUCTS
 COVERED BY U. S. AND FOREIGN PATENTS AND/OR PATENTS PENDING.

UNPUBLISHED COPY NOT
 REPRODUCED NOR PUBLISHED
 WITHOUT WRITTEN PERMISSION
 OF AMP INCORPORATED.

		REVISIONS				
P	F	ZONE	LTR	DESCRIPTION	DATE	APPROVED
	✓		O ₁	REVISED	6871 PLK	8-80
A	✓		A	REVISED	8167 MS	10-82
			B	REV PER EC 0320-209-97		7-1-97 NS

1-530652-4 L.A.S. SHOWN



- 1. 000030 GOLD OVER .000030 MIN NICKEL
- 2. 000150 MIN. BRIGHT TIN OVER POST LENGTH OF .185.
- 3. POST FOR .051 MIN. DIA. HOLE
- 4. CONTACT USED FOR REPLACEMENT IN .140 ROW TO ROW CONNECTORS.

UNLESS OTHERWISE SPECIFIED DIMENSIONS ARE IN INCHES. TOLERANCES ON: DECIMALS ± ANGLES ±		CONTRACT NO		PART NO	
MATERIAL		DR		AMP INCORPORATED Harrisburg, Pa.	
PHOS BRONZE		M Smith 8-29-75		NAME CONTACT, FLOW SOLDER, .052 DIA. HOLE, LOW PROFILE, L.P.	
FINISH		APPD		SIZE	
1 2		R. Shorman 9-2-75		B	
		DSGN APPD		CODE IDENT NO	
		OTHER APPD		00779	
		DRAWING NO		530652	
		SCALE 10-1		SHEET 1 OF 1	

X-ON Electronics

Largest Supplier of Electrical and Electronic Components

Click to view similar products for [Other Tools](#) category:

Click to view products by [TE Connectivity](#) manufacturer:

Other Similar products are found below :

[CR-0AFL4--332K](#) [568681-1](#) [5800-0090](#) [58061-1](#) [59065-5](#) [59085](#) [00-8273-RDPP](#) [00-8729-WHPP](#) [593033](#) [593072](#) [593564100](#) [593575](#)
[593593](#) [011349-000](#) [CRCW08052740FRT1](#) [LUC-012S070DSM](#) [LUC-018S070DSP](#) [LUC-024S105DSP](#) [599-2021-3-NME](#) [599-JJ-2021-03](#)
[00-5080-YWPP](#) [00-9089-RDPP](#) [00-9300-RDPP](#) [CRCW2010331JR02](#) [601-JJ-06](#) [601-SPB](#) [601YSY](#) [602-JJ-03](#) [602SPB](#) [603-JJ-07-FP](#) [603-](#)
[JJY-04](#) [M15570-25](#) [CRTN1013](#) [CS16](#) [6-1579014-0](#) [6203](#) [62200-5709](#) [6240-1](#) [M43435 TY 2 SZ 3 FIN B BLK](#) [M43435 TY 5 SZ 3 FIN C](#)
[NAT](#) [M-5Z](#) [M6816](#) [M7298](#) [M7456](#) [M7976](#) [660-29ABT1](#) [662508-1](#) [CVHD-950X-93.333](#) [CW104-01X](#) [671-GP-04-KT39-73207](#)