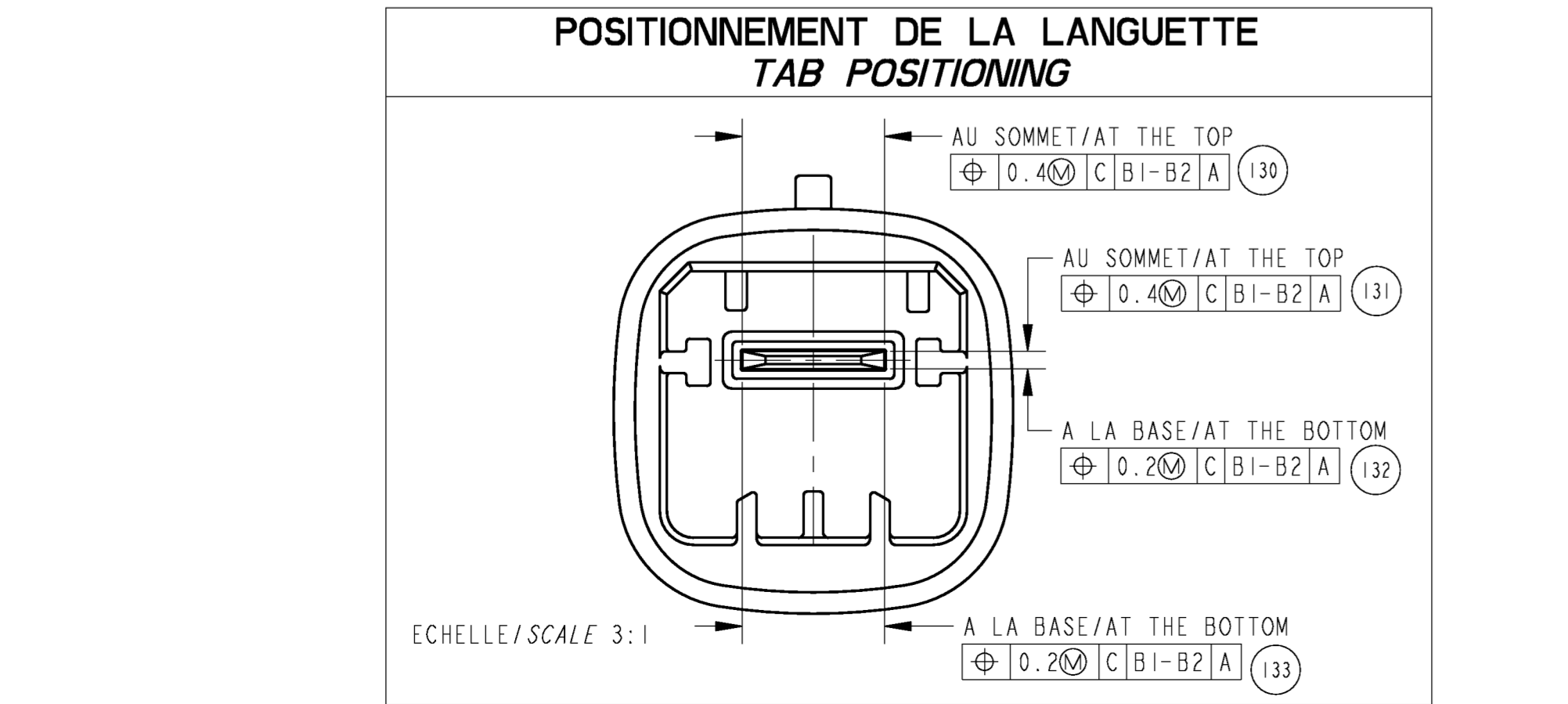
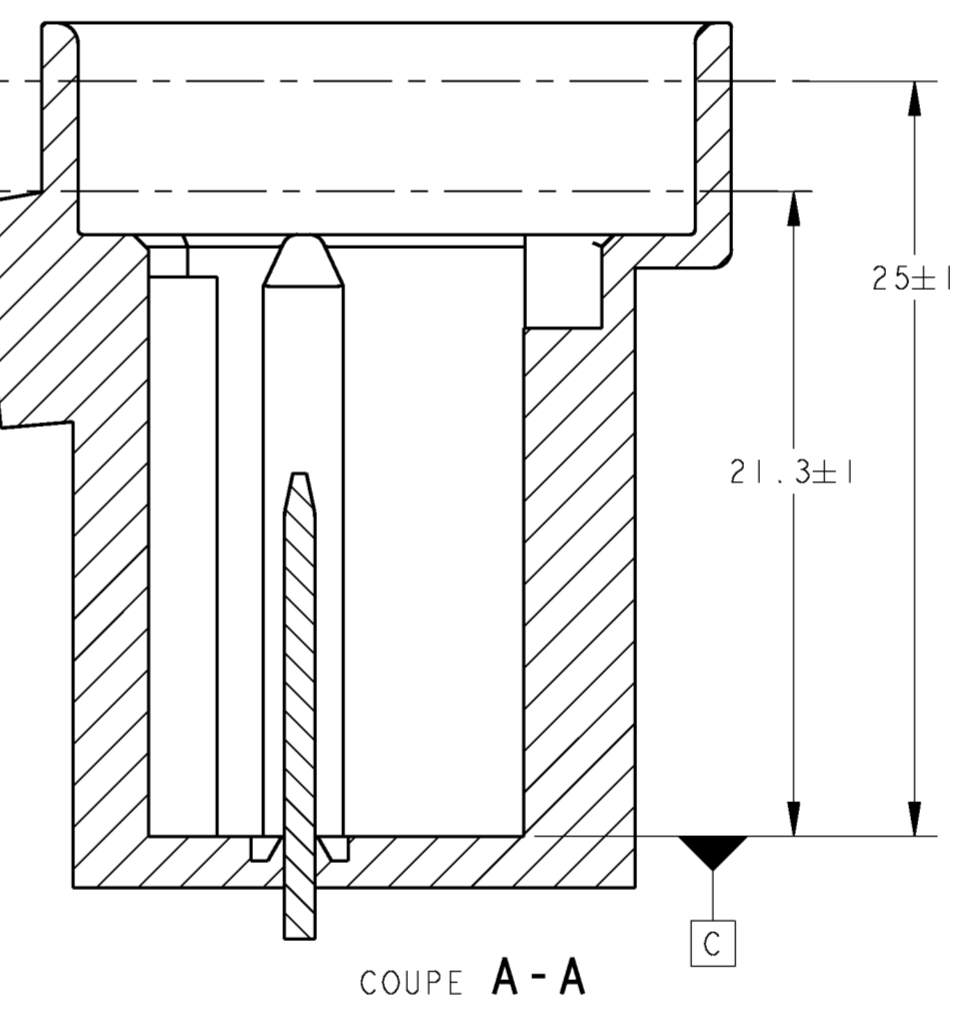
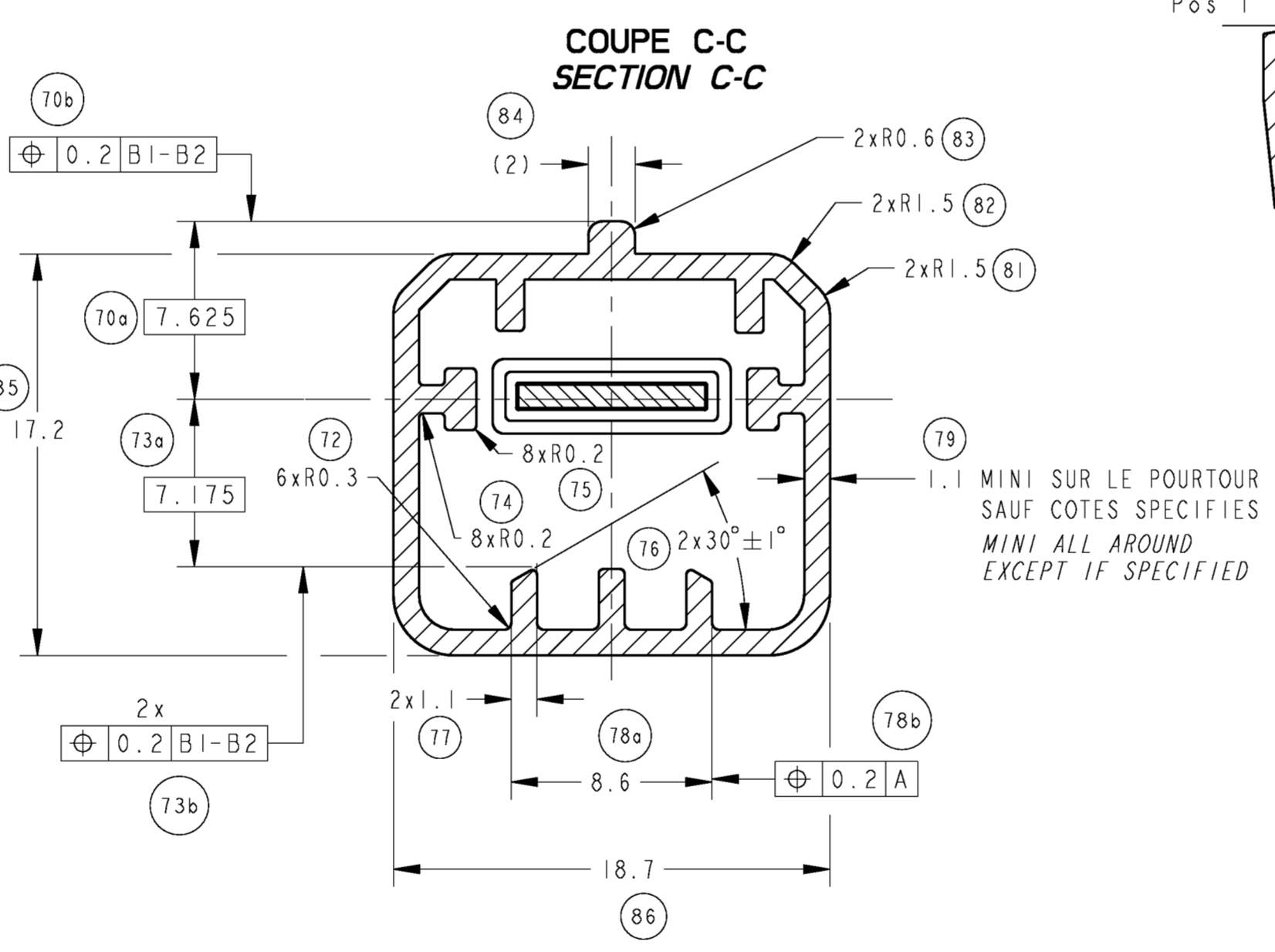
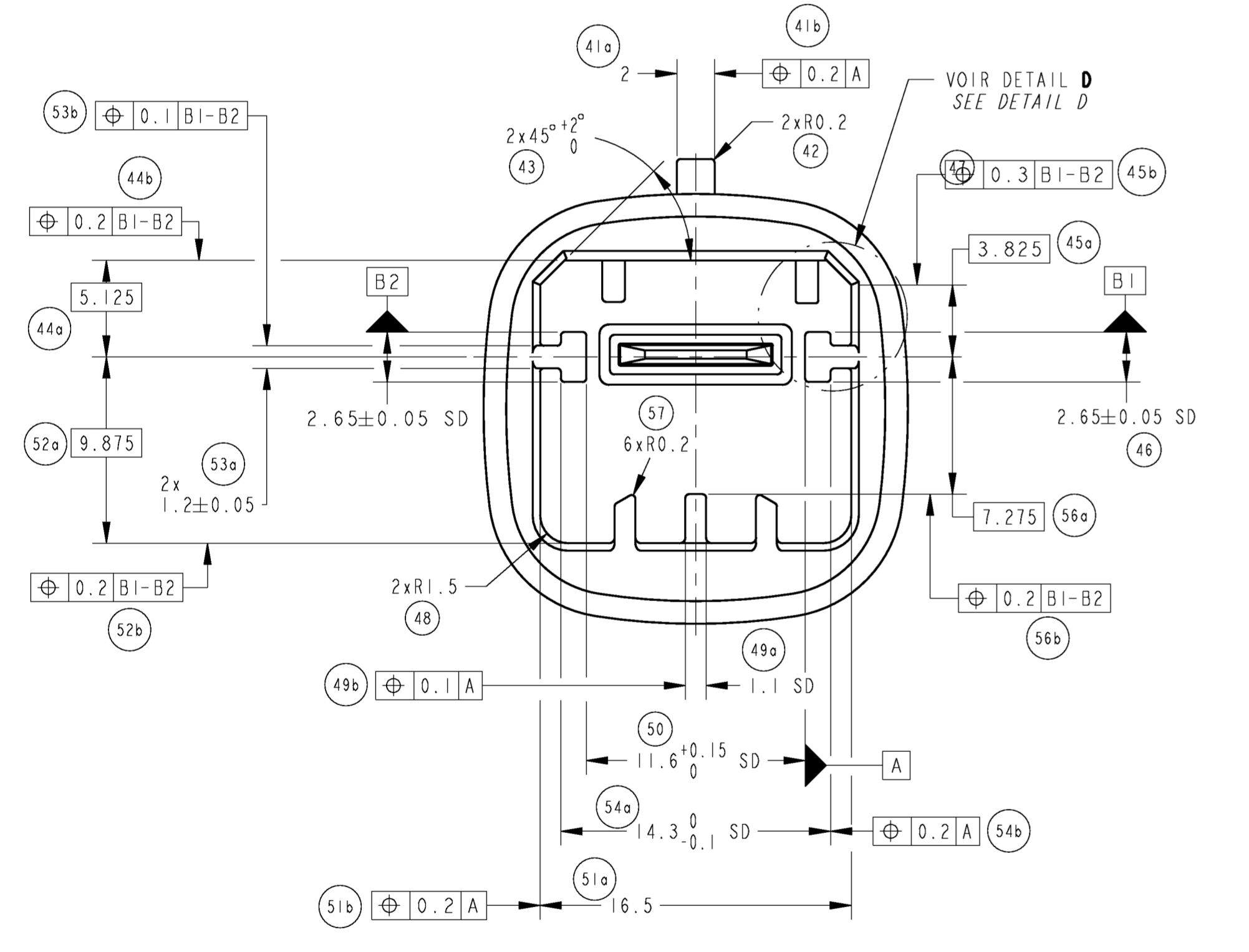
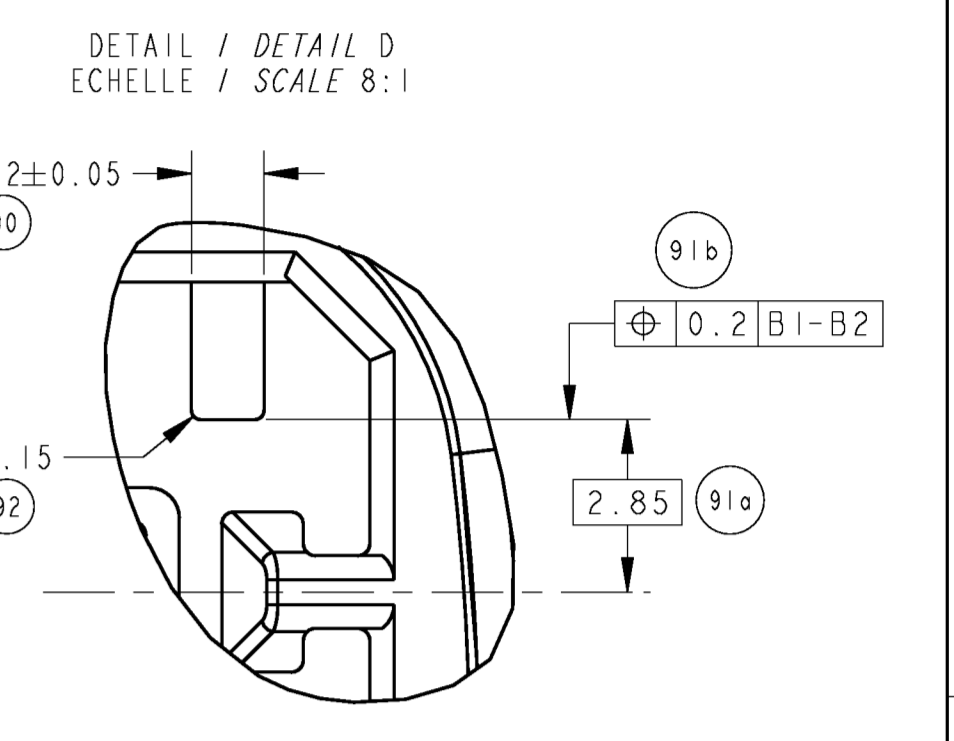
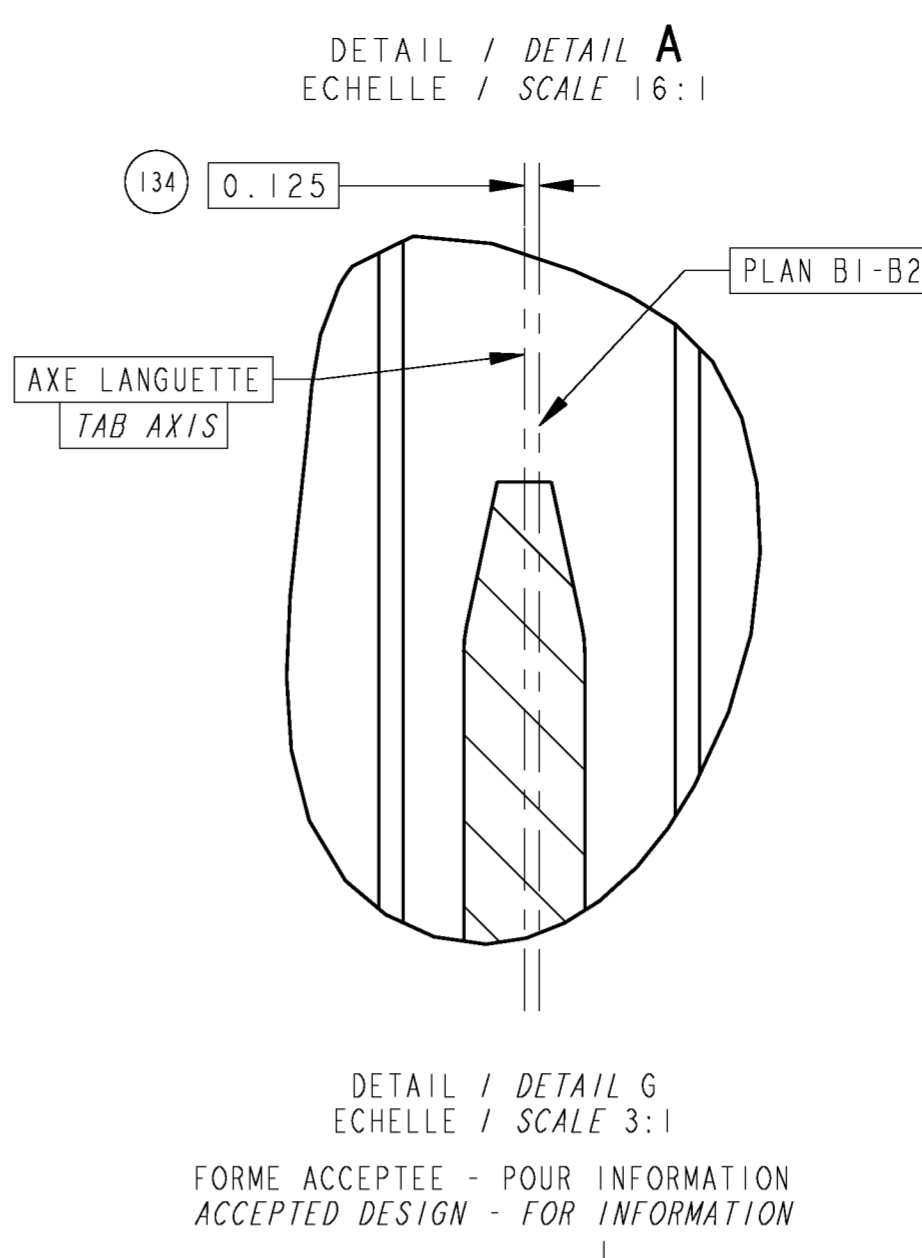
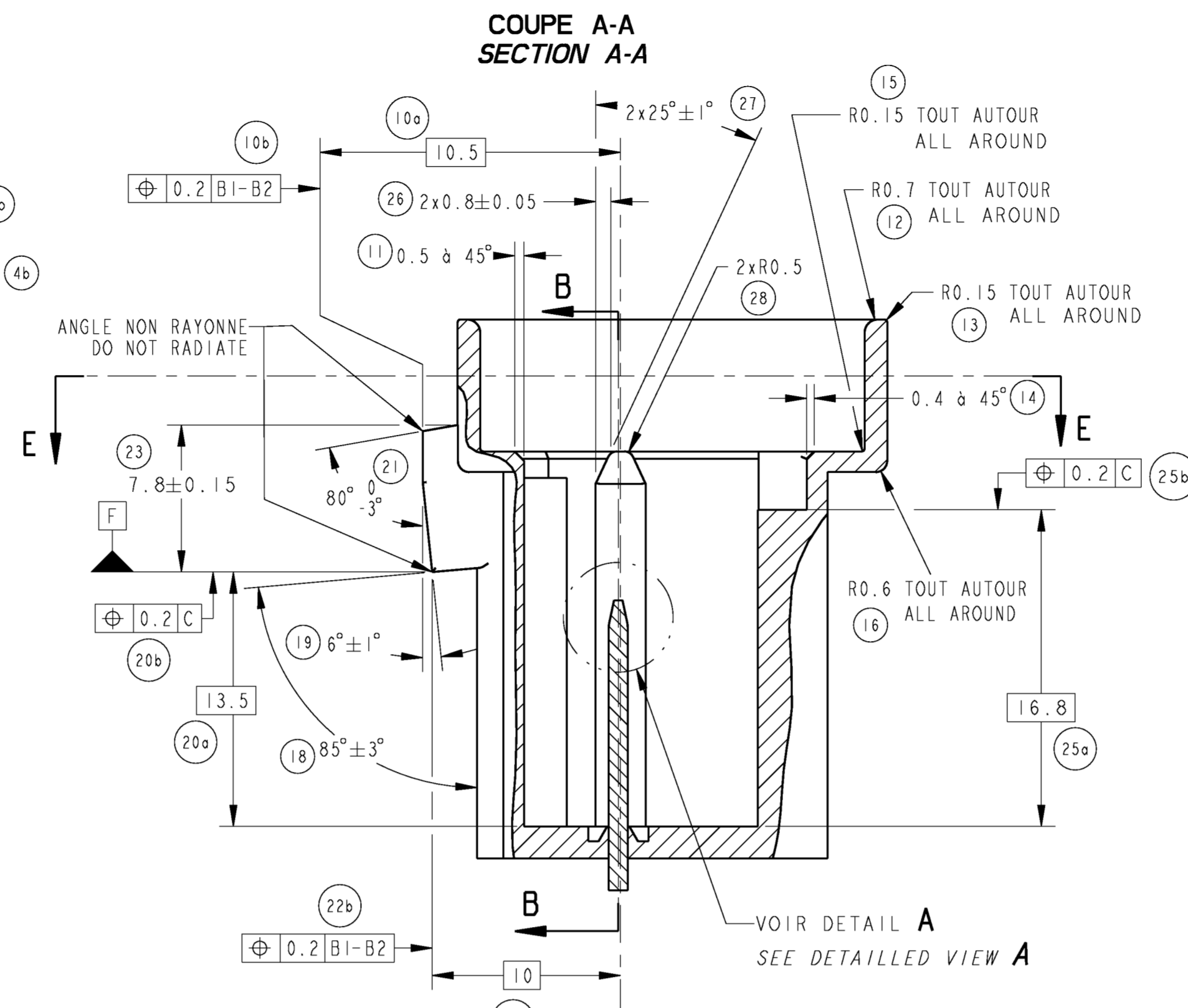
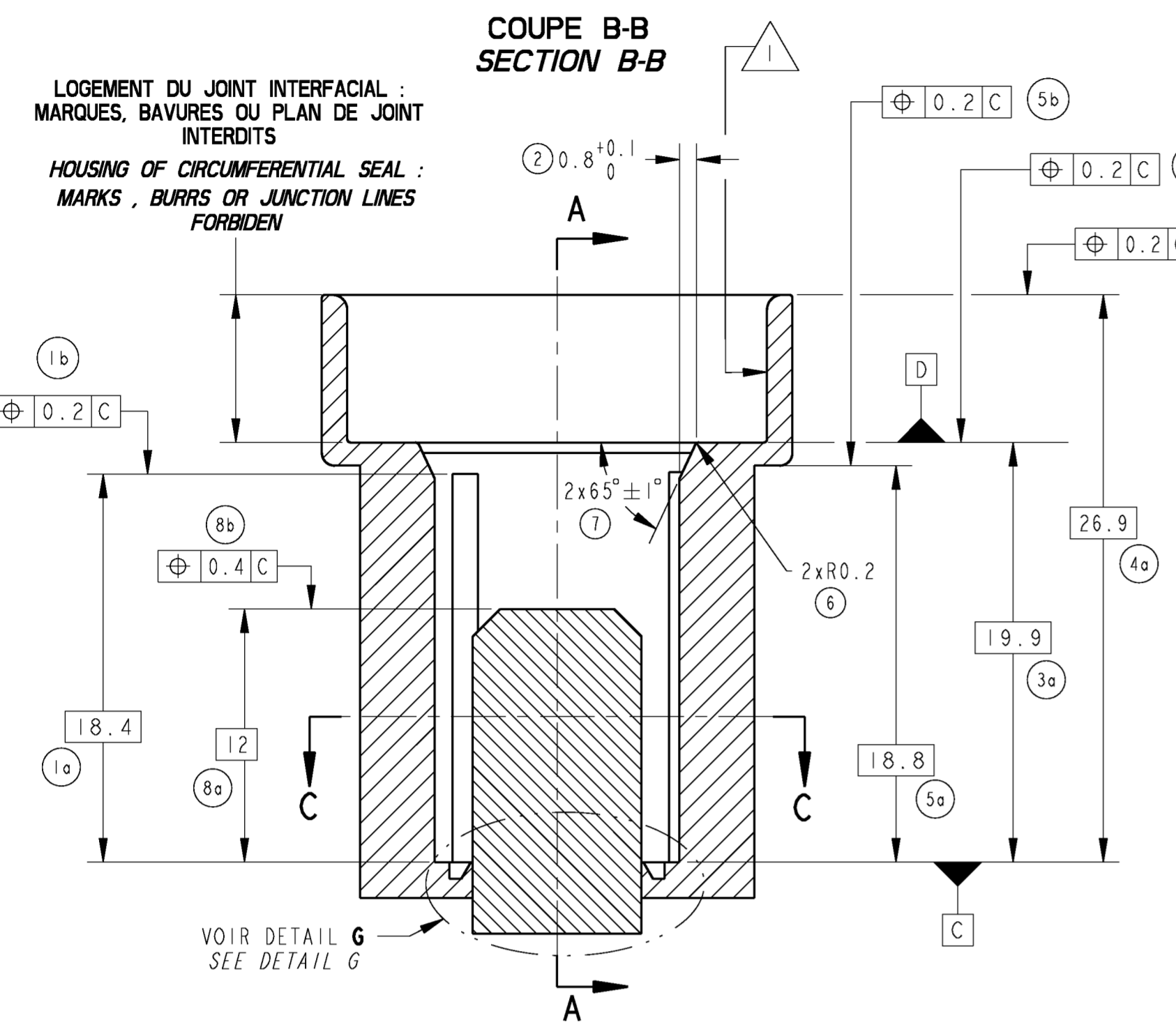
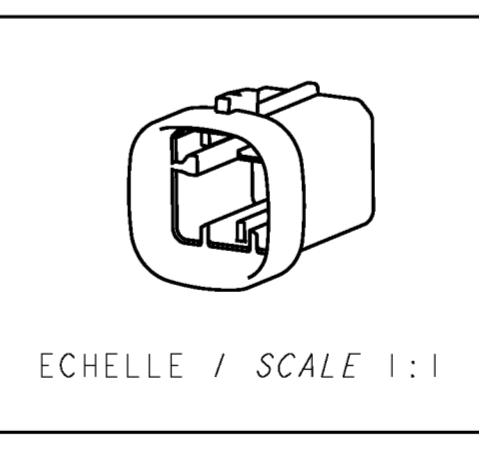


LOC	DIST	REV	DESCRIPTION	DATE	OWN	APPV
F	00		ISO DIMENSIONING AND DRAWING UPDATE	15DEC2006	FS1	JDr
		H	GENE2 IWAY HOUSING ADDED	18DEC2009	FS1	JDr



CODAGES ET COULEURS ASSOCIEES CODING AND ASSOCIATED COLORS		
NOIR / BLACK	BLEU / BLUE	GRIS / GREY
1544642-1	1544642-2	1544642-3



**NOTA :**

- MATIERE PRECONISEE: PBT 10% OU 20% FV
- DEPOUILLES: 1.5\* SAUF SPECIFICATIONS CONTRAIRES
- LES DEFORMATIONS DE LA PIECE DOIVENT ETRE COMPRISES DANS LES TOLERANCES
- ( ) : COTE POUR INFORMATION
- SD : SANS DEPOUILLE OU DEPOUILLE COMPRISE DANS LA TOLERANCE
- SURFACE A POLIR (Ra 0.4 SUR MOULE)
- CONTROLE DE LA FORME: 18 POINTS DE MESURE A PRENDRE SUR LE CONTOUR DE LA ZONE D'ETANCHEITE AUX POSITIONS 'Pos 1' et 'Pos 2'

**NOTE :**

- RECOMMENDED MATERIAL: PBT 10% OR 20% GF
- DRAFTS: 1.5\* UNLESS OTHERWISE SPECIFIED
- PART'S DEFORMATIONS MUST BE INCLUDED IN THE TOLERANCES
- ( ) : DIMENSION FOR INFORMATION
- SD : WITHOUT DRAFT OR DRAFT INCLUDED IN THE TOLERANCES AREA TO BE POLISHED (Ra 0.4 ON THE MOLD)
- SHAPE CHECKING: 18 MEASUREMENT POINTS TO BE TAKEN ALL AROUND THE SEALING AREA AT 'Pos 1' AND 'Pos 2' LOCATION

LA COTATION EST EFFECTUEE SUIVANT L'EXIGENCE D'ENVELOPPE DIMENSIONING IS PERFORMED ACCORDING TO SURROUNDING REQUIREMENT ISO 8015:1985 (NF E 04-561 OCT.1991)

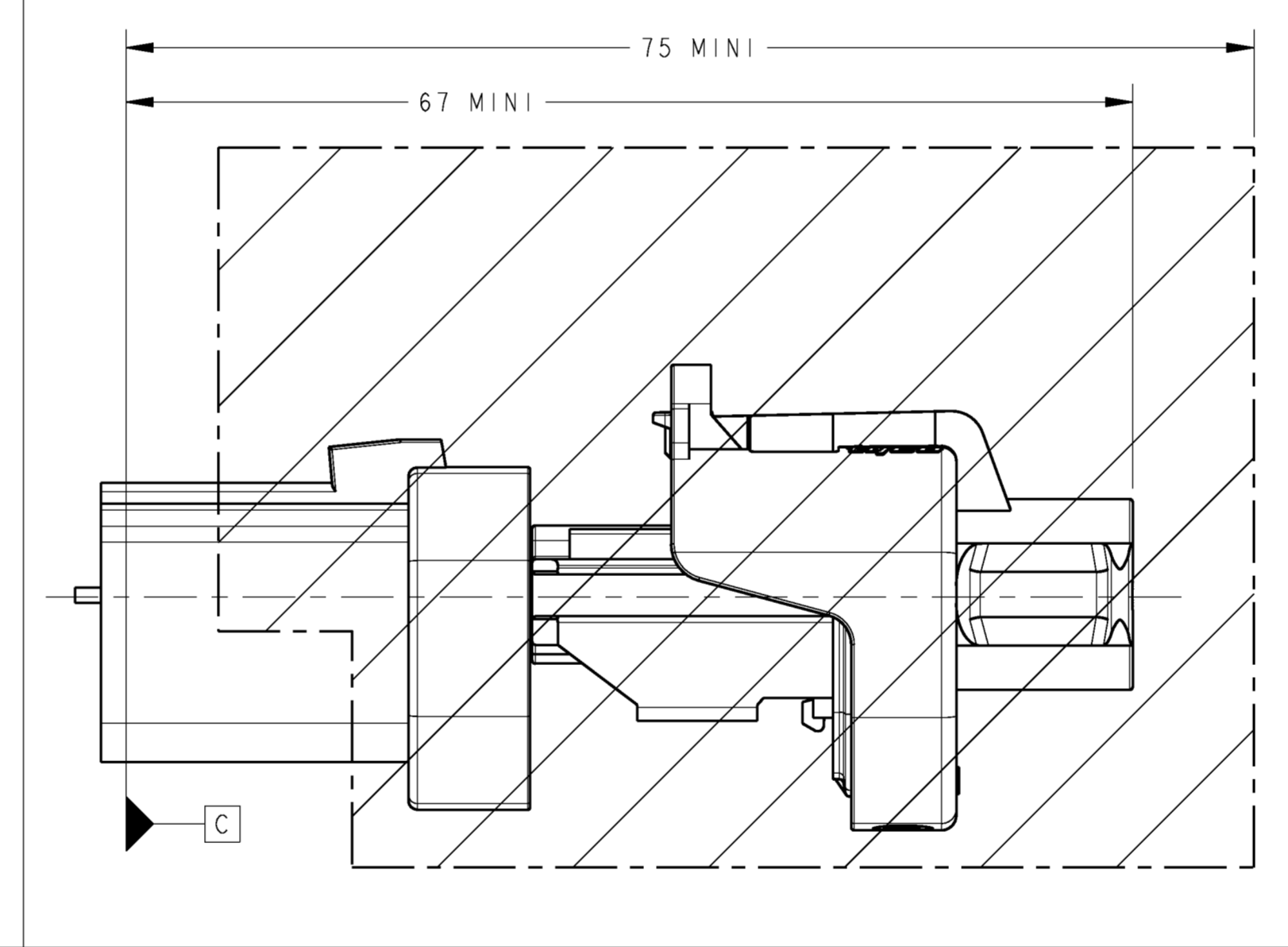
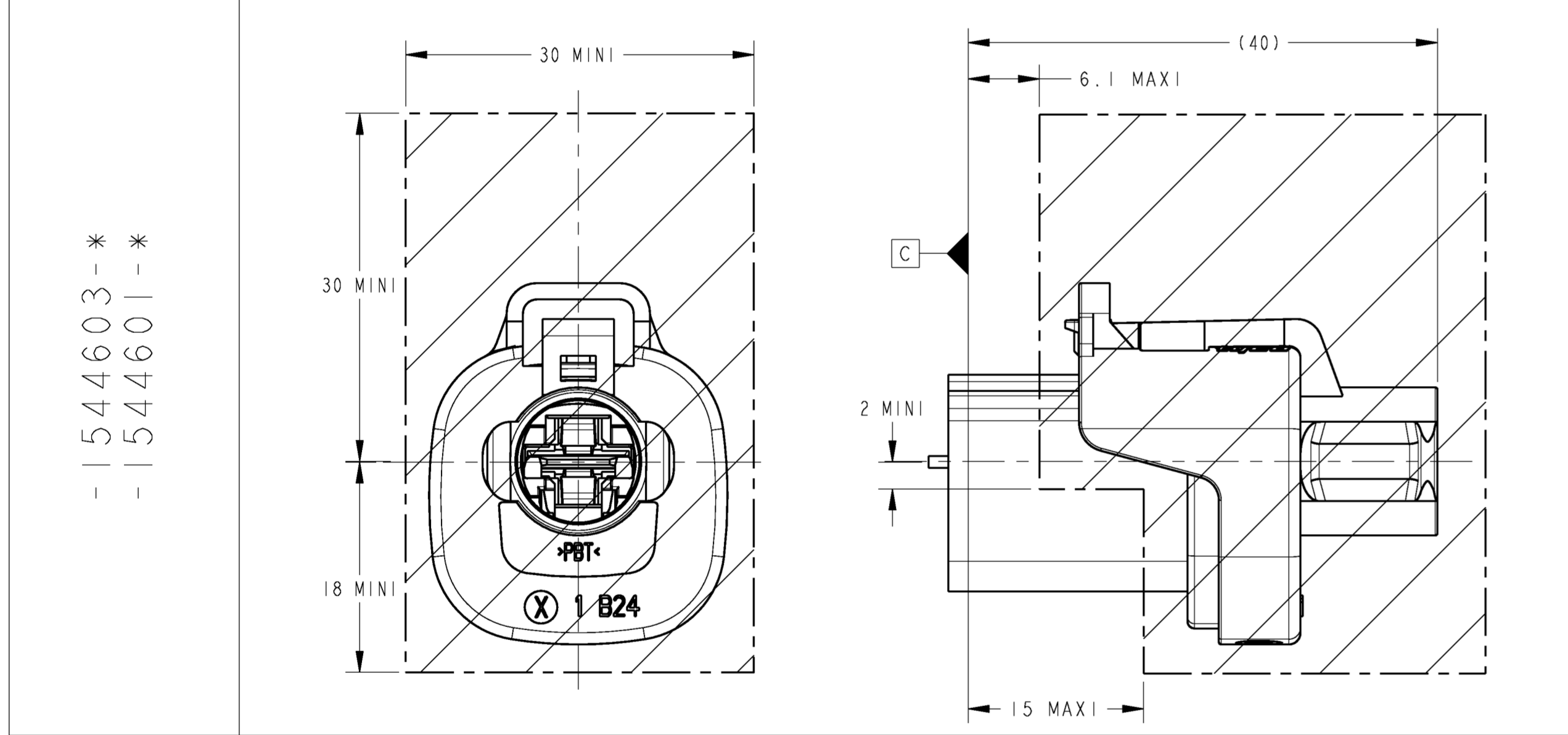
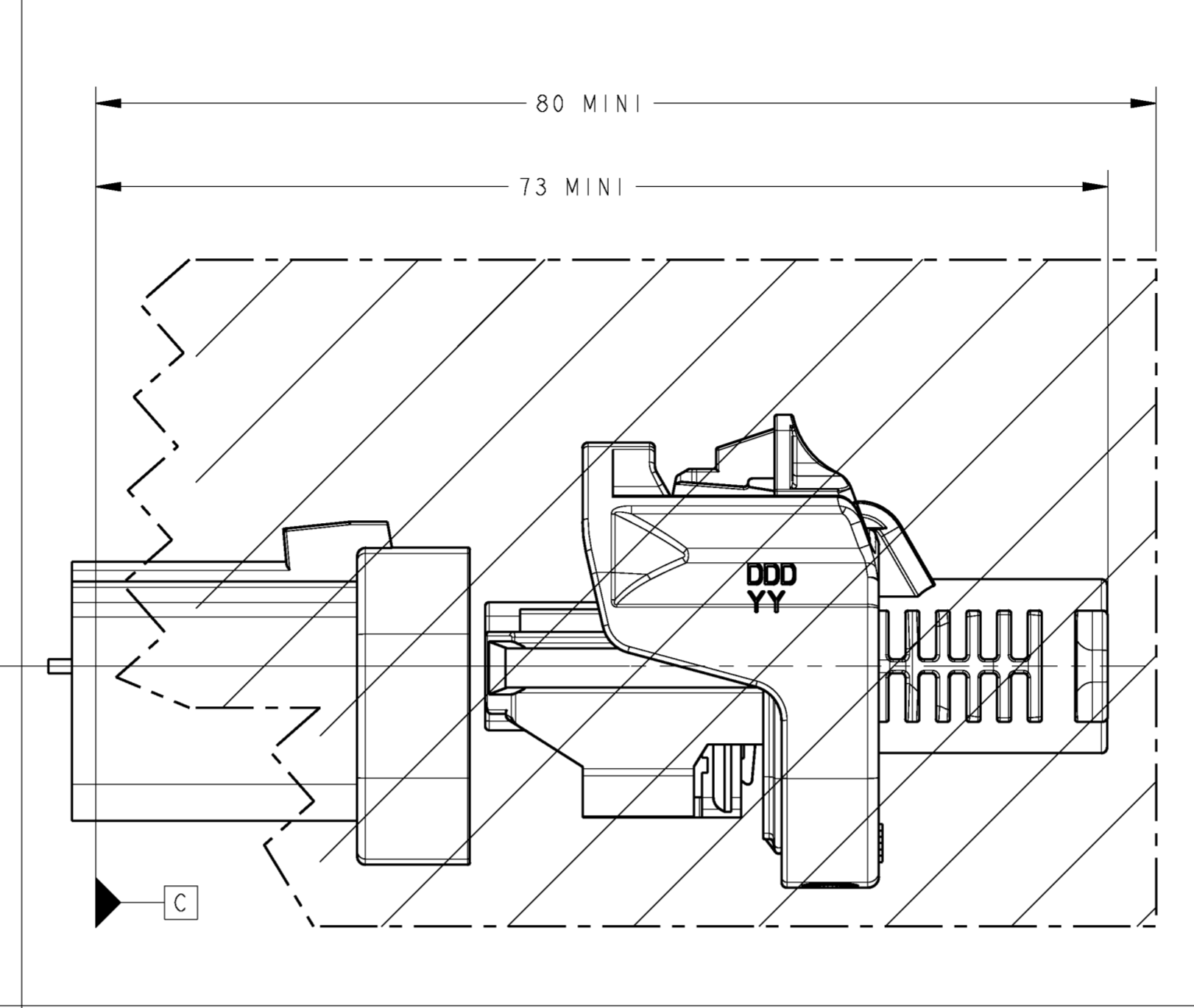
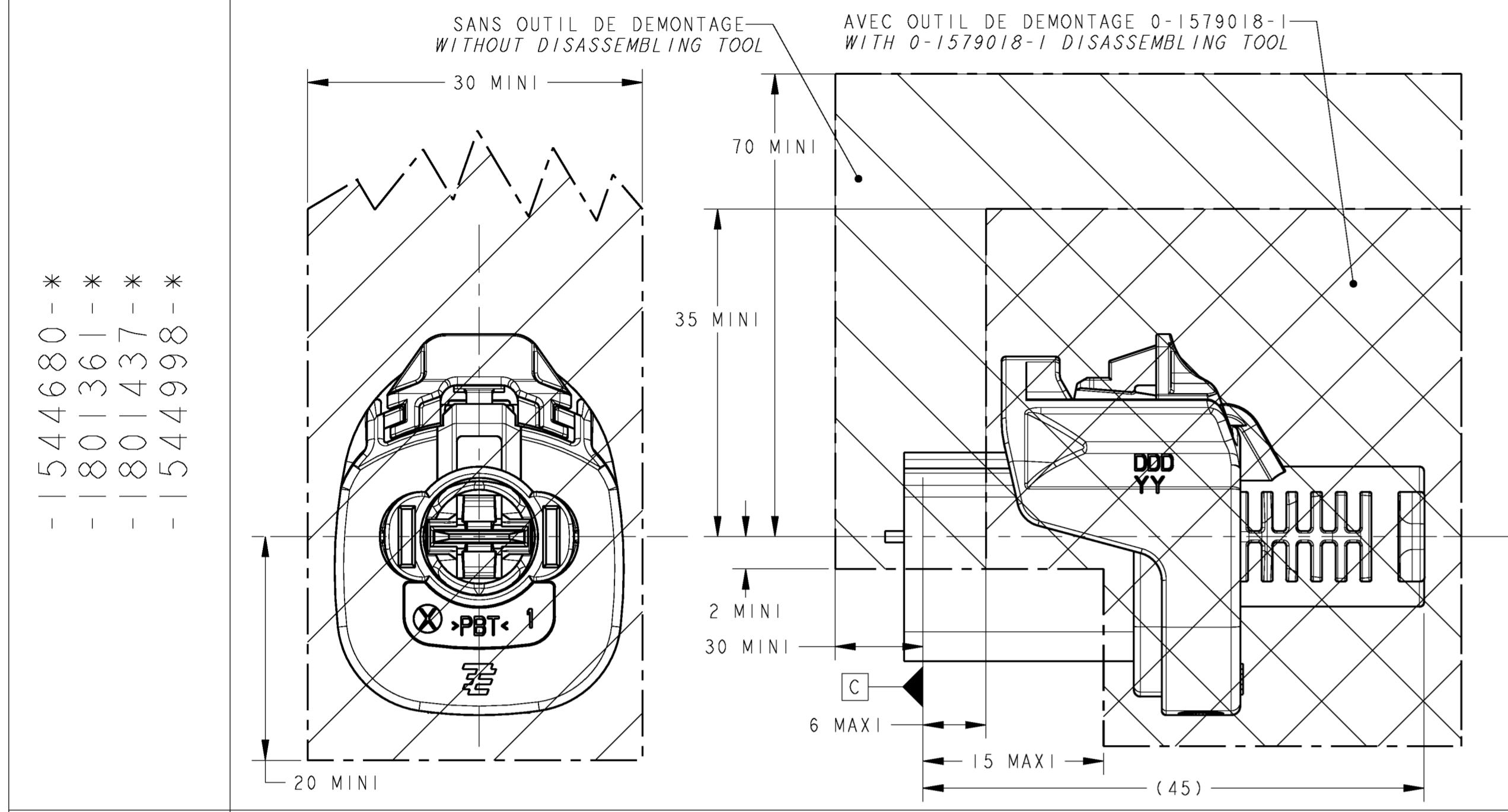
ISO 1101 (NF E 04-552)  
ISO 2692:1988 (NF E 04-555 FEV.1992)  
ISO 5459 (NF E 04-554 DEC.1988)  
ISO 5458:1987 (NF E 04-559 FEV.1991)  
ISO 10578 (NF E 04-558 AOUT 1983)  
ISO 10579 (NF E 04-565 OCT.1986)  
ISO 3040:1990 PARTIELLE (NF E 04-557 DEC.1991)

OWN / DRAFTER: T. GUILMIER	DATE: 10JAN2003		TYCO ELECTRONICS FRANCE SAS
CHK / CHECKER: F. FLORES	DATE: 10JAN2003		RN 90, 38530 CHAPAREILLAN
APPV / APPROVE: DANIEL	DATE: 10JAN2003	NAME / TITRE: DANIEL	EMBASE 1 VOIE 8mm NGI ETANCHE 1 WAY 8mm NGI SEALED HEADER
PRODUCT SPEC: PRODUCT SPEC: 108-15282	APPLICATION SPEC: APPLICATION SPEC: 411-15664	SIZE / FORMAT: A	
MATERIAL / MATIERE: VOIR NOTA SEE NOTE	FINISH / FINITION: -	WEIGHT / MASSE APPROX.: -	CUSTOMER DRAWING / PLAN CLIENT: UN QUEREMENT POUR REFERENCE
SCALE: 4:1		SHEET / FEUILLE: 1 OF 2	

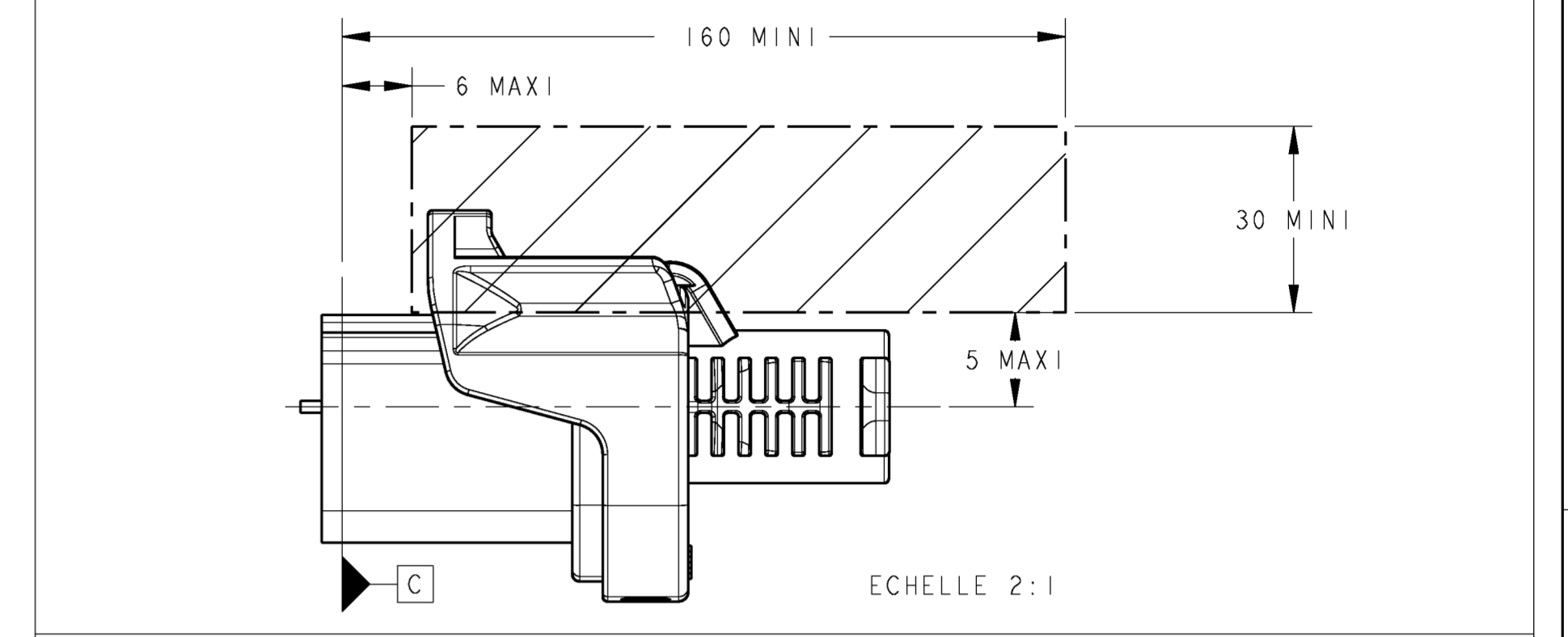
LOC	DIST	REV	DESCRIPTION	DATE	OWN	APPR
F	00		SEE SHEET 1			

REF BOITIER / HOUSING PN  
 ZONE A LAISSER LIBRE AUTOUR DE L'EMBASE AVANT ET APRES ACCOUPLEMENT  
 AREA TO BE FREE AROUND THE HEADER BEFORE AND AFTER ASSEMBLY

POUR DEMONTAGE / FOR DISASSEMBLING  
 POUR MONTAGE / FOR ASSEMBLING

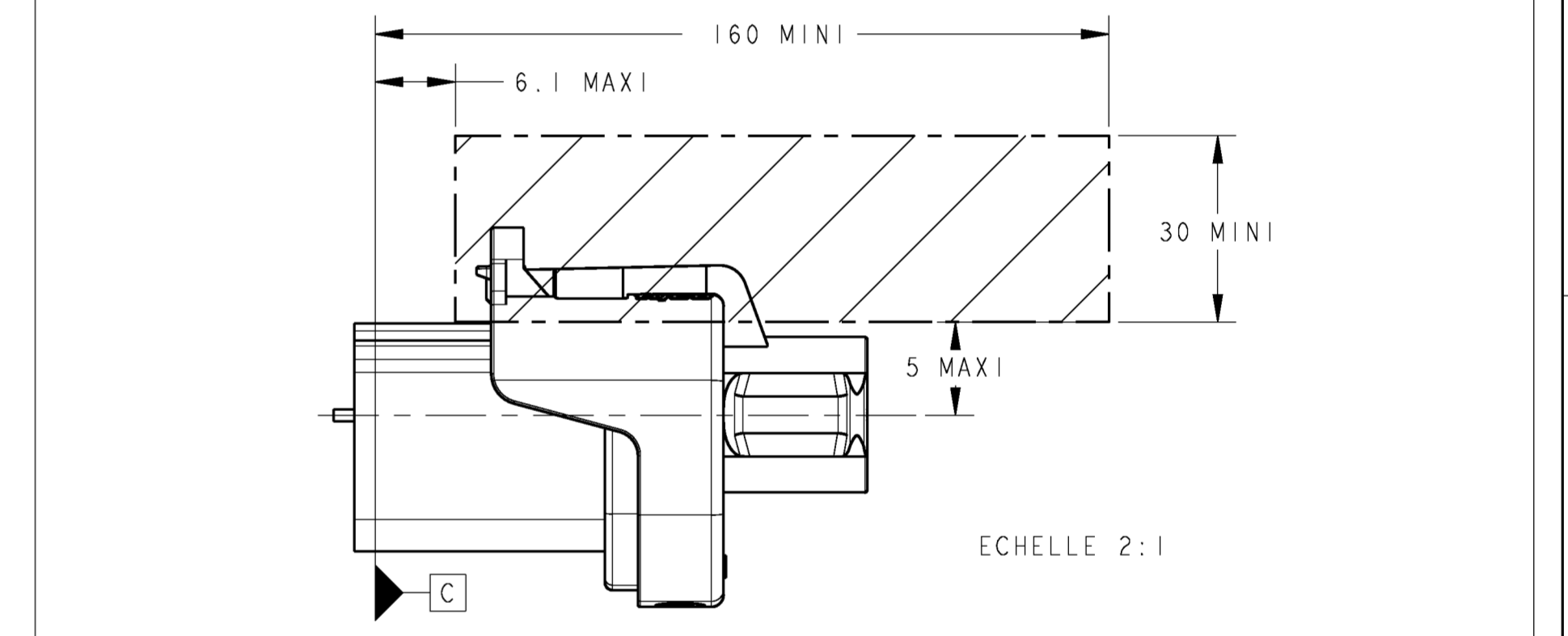


PORTE CLIP 1544998-\* ET 1801361\* (SANS CPA)  
 1544998-\* AND 1801361-\* RECEPTACLE HOUSING (WITHOUT CPA)

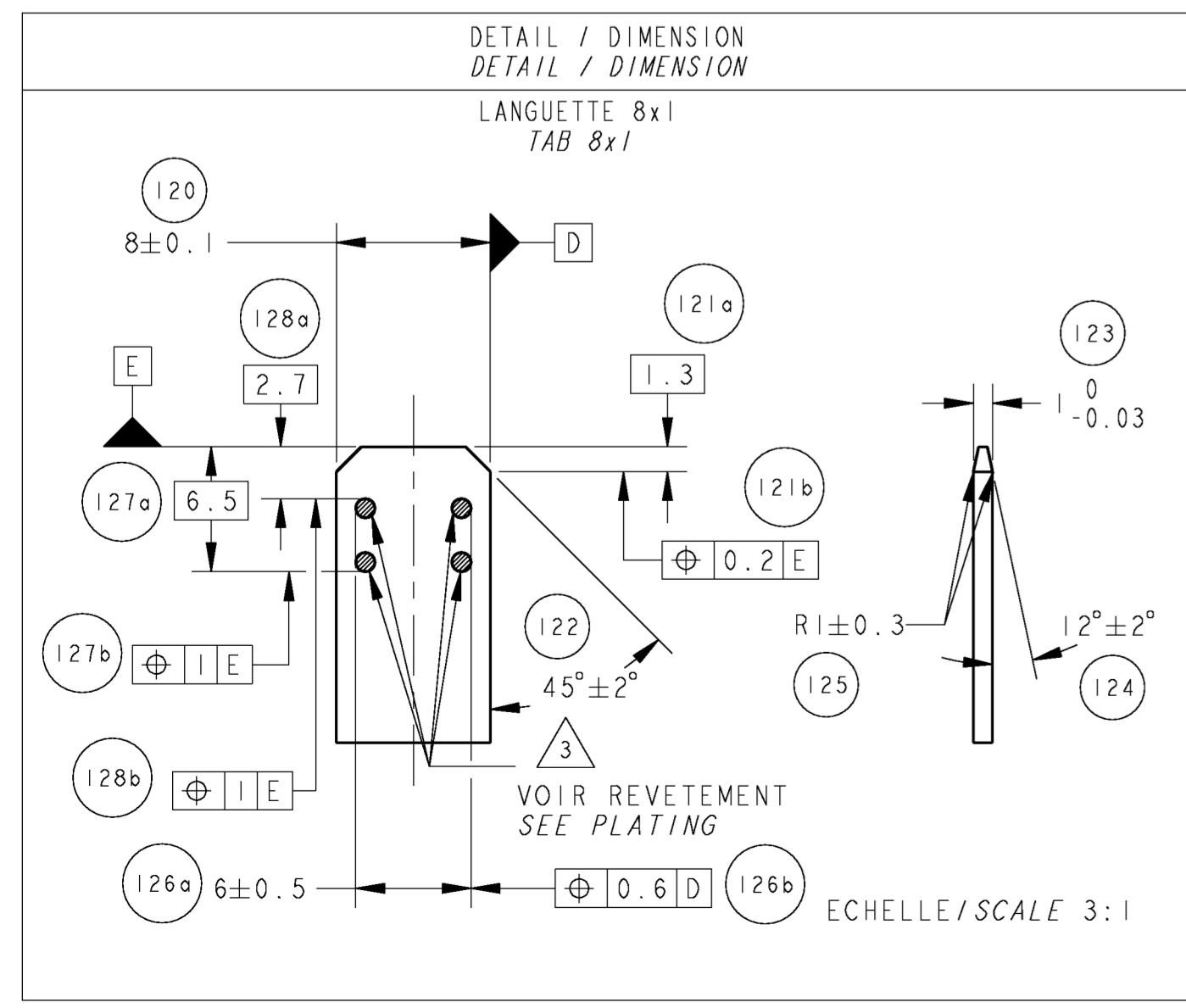


ZONE A LAISSER LIBRE POUR DECONNEXION AVEC UN TOURNEVIS  
 AREA TO BE FREE FOR DISCONNECTION WITH A SCREW DRIVER

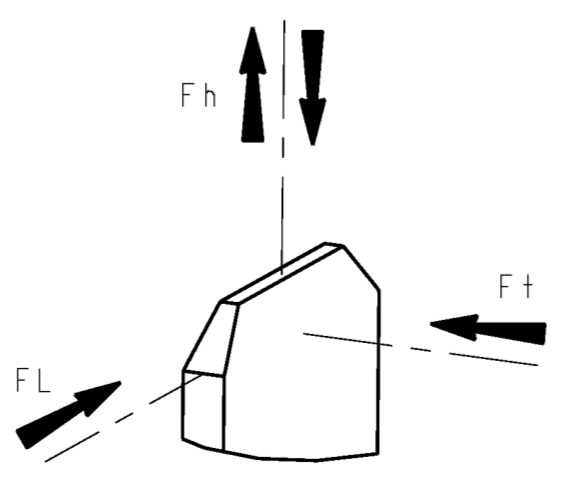
PORTE CLIP 1544601-\* et 1544603-\*  
 1544601-\* AND 1544603-\* RECEPTACLE HOUSING



ZONE A LAISSER LIBRE POUR DECONNEXION AVEC UN TOURNEVIS  
 AREA TO BE FREE FOR DISCONNECTION WITH A SCREW DRIVER

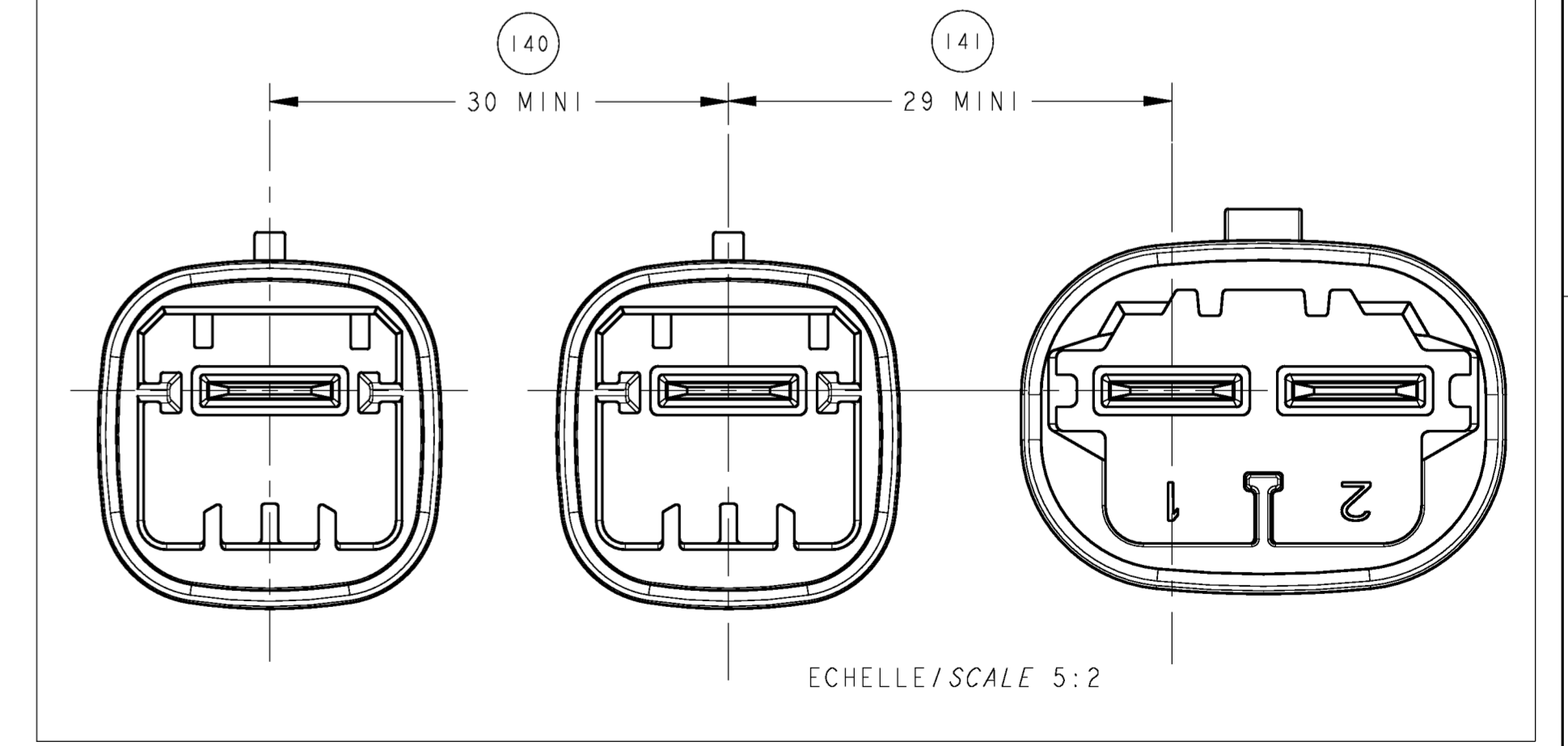


MATIERE / REVETEMENT MATERIAL / PLATING	TENUE MECANIQUE MECHANICAL RESISTANCE
<b>MATIERE:</b> - CONDUCTIVITE ELECTRIQUE PRECONISEE >60% IACS <b>MATERIAL:</b> - RECOMMENDED ELECTRIC CONDUCTIVITY >60% IACS <b>REJETEMENT:</b> ETAMAGE △3: 4 POINTS DE MESURE SUR LES 2 FACES <b>PLATING:</b> TIN PLATED △3: 4 MEASUREMENT POINTS ON BOTH FACES Ni 0.5-1µm Sn 0.8-3µm	Fh = 200N (<=>) Ft = 40N (<=>) Fh = 200N (<=>) Ft = 40N (<=>) F1 = 100N (<=>) F1 = 100N (<=>) (<=>): TRACTION / COMPRESSION (<=>): TENSION / COMPRESSION LES FORCES DOIVENT ETRE APPLIQUEES AU MILIEU DE L'ARETE OU DE LA FACE DESIGNEE THE FORCES MUST BE APPLIED AT THE MIDDLE OF THE EDGE OR THE SURFACE AS SHOWN



COMPOSANTS ASSOCIES ASSOCIATED COMPONENTS		
COMPOSANTS COMPONENTS	REF TE PN TE	MATIERE MATERIAL
PORTE-CLIP 1 VOIE 8mm NGI ETANCHE 1-WAY 8mm NGI SEALED RECEPTACLE HOUSING	1544603-*	PBT HB
PORTE-CLIP 1 VOIE 8mm NGI 1-WAY 8mm NGI RECEPTACLE HOUSING	1544601-*	PBT HB
PORTE-CLIP 1 VOIE 8mm NGI GENE2 ETANCHE AVEC CPA 1-WAY 8mm NGI SEALED RECEPTACLE HOUSING GENE2 WITH CPA	1544680-*	PBT HB
1/PORTE-CLIP 1 VOIE 8mm NGI GENE2 ETANCHE 1-WAY 8mm NGI SEALED RECEPTACLE HOUSING GENE2	1801361-*	PBT HB
PORTE-CLIP 1 VOIE 8mm NGI GENE2 AVEC CPA 1-WAY 8mm NGI RECEPTACLE HOUSING GENE2 WITH CPA	1801347-*	PBT HB
PORTE-CLIP 1 VOIE 8mm NGI GENE2 1-WAY 8mm NGI RECEPTACLE HOUSING GENE2	1544998-*	PBT HB

ENTRAXES ENTRE EMBASES JUXTAPOSEES  
 DISTANCES BETWEEN AXIS OF JUXTAPOSED HEADERS



## X-ON Electronics

Largest Supplier of Electrical and Electronic Components

*Click to view similar products for [Automotive Connectors](#) category:*

*Click to view products by [TE Connectivity](#) manufacturer:*

Other Similar products are found below :

[003-018-000](#) [60403001](#) [60993906-B](#) [M902-2131](#) [M902-2161](#) [72.330.1035.1](#) [73.353.4028.0](#) [F119300-B](#) [F166900](#) [F258300-B](#) [F358300-B](#)  
[F407400](#) [F444110](#) [F487000](#) [F509500B-B](#) [827153-1](#) [8N1515-32-24P](#) [9-1326729-8](#) [925474-1](#) [928905-1](#) [964562-4](#) [968782-1](#) [GT17SA-8DS-](#)  
[HU](#) [98891-1012](#) [98947-1016](#) [12004147](#) [12004475-L](#) [12010290](#) [12010309-B](#) [12015454](#) [12020219-B](#) [12020308](#) [12041318-B](#) [12052225-L](#)  
[12052466](#) [12059125](#) [12064869](#) [12004327-B](#) [12010503-B](#) [12015308](#) [12015384](#) [12015909](#) [1-21030-1](#) [12041254](#) [12041318](#) [12047946-B](#)  
[12047957](#) [12047957-L](#) [12059473](#) [12066261](#)