

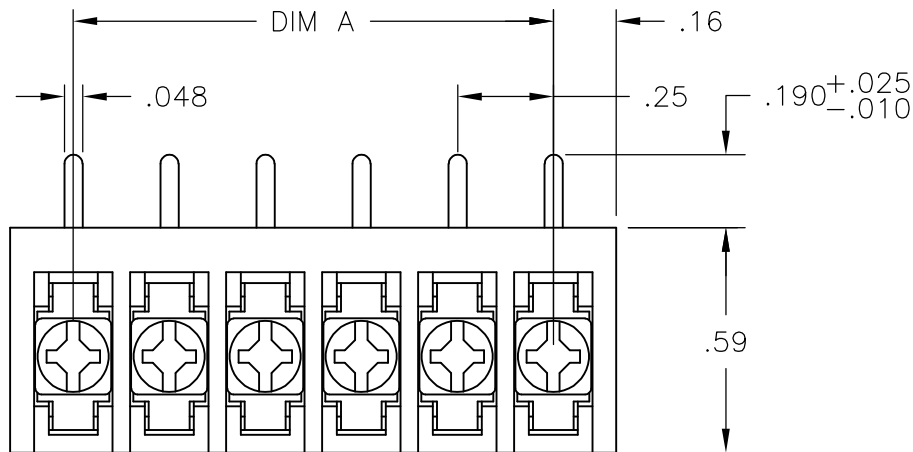
THIS DRAWING IS UNPUBLISHED. QUELLE RECHTSVERHALTEN BEWAHREN. / UNPUBLISHED DRAWING. ALL RIGHTS RESERVED. / DISEÑO SIN PUBLICAR. TODOS LOS DERECHOS RESERVADOS. / UNPUBLISHED DRAWING. ALL RIGHTS RESERVED. / UNPUBLISHED DRAWING. ALL RIGHTS RESERVED.

| | | | | |
|-----|------|-----------|---------|---------------------------|
| LOC | DIST | REVISIONS | | |
| FT | 0 | P | LTR REV | DESCRIPTION |
| | | | F | REVISED PER ECO-11-023401 |
| | | DATE | DWN | APVD |
| | | 01DEC11 | KH | MS |

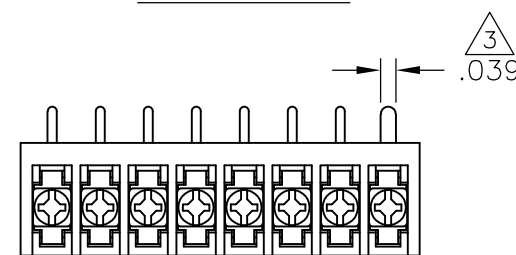
MATERIAL:
 HOUSING: THERMOPLASTIC, UL94V-0, BLACK.
 TERMINAL: BRIGHT TIN PLATED, COPPER ALLOY.
 M3 SCREWS: ZINC PLATED STEEL.
 ELECTRICAL:
 RATED CURRENT: 10A.
 OPERATING VOLTAGE: 300V.
 WIRE RANGE: 16-30 AWG.

MECHANICAL:
 PITCH (TERMINAL SPACING): .250"
 OPERATING TEMP.: 120°C MAX.

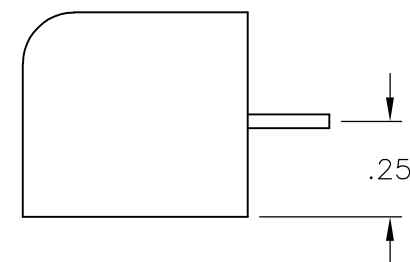
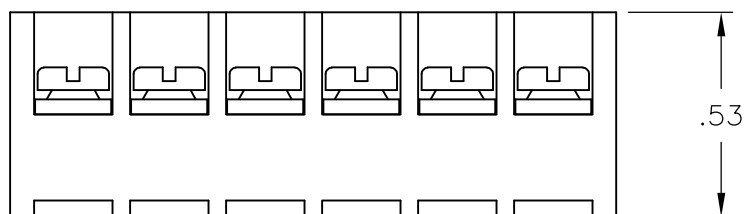
- ① SEE FIGURE.
- ② M3 SCREWS BOTTOMED.
- ③ RECOMMENDED PCB HOLE DIAMETER: .090".
- ④ PRELIMINARY PART NUMBER.
- ⑤ OBSOLETE PARTS: OBSOLETE CIS STREAMLINING PER D.RENAUD/D.SINISI



1-1546119-4



3-1546099-2

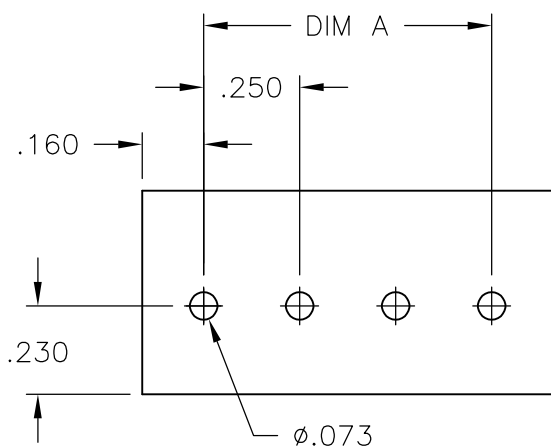


⑤ ① OBSOLETE

④ ①

⑤ ② OBSOLETE

| DIM "A" | NO OF POS | CATALOG NUMBER | TE PART NO. |
|---------|-----------|----------------|-------------|
| 7.25 | 30 | 3PCR-30-006 | 3-1546099-0 |
| 7.00 | 29 | 3PCR-29-006 | 2-1546099-9 |
| 6.75 | 28 | 3PCR-28-006 | 2-1546099-8 |
| 6.50 | 27 | 3PCR-27-006 | 2-1546099-7 |
| 6.25 | 26 | 3PCR-26-006 | 2-1546099-6 |
| 6.00 | 25 | 3PCR-25-006 | 2-1546099-5 |
| 5.75 | 24 | 3PCR-24-006 | 2-1546099-4 |
| 5.50 | 23 | 3PCR-23-006 | 2-1546099-3 |
| 5.25 | 22 | 3PCR-22-006 | 2-1546099-2 |
| 5.00 | 21 | 3PCR-21-006 | 2-1546099-1 |
| 4.75 | 20 | 3PCR-20-006 | 2-1546119-0 |
| 4.50 | 19 | 3PCR-19-006 | 1-1546119-9 |
| 4.25 | 18 | 3PCR-18-006 | 1-1546099-8 |
| 4.00 | 17 | 3PCR-17-006 | 1-1546099-7 |
| 3.75 | 16 | 3PCR-16-006 | 1-1546099-6 |
| 3.50 | 15 | 3PCR-15-006 | 1-1546099-5 |
| 3.25 | 14 | 3PCR-14-006 | 1-1546099-4 |
| 3.00 | 13 | 3PCR-13-006 | 1-1546099-3 |
| 2.75 | 12 | 3PCR-12-006 | 1-1546119-7 |
| 2.50 | 11 | 3PCR-11-006 | 1-1546119-6 |
| 2.25 | 10 | 3PCR-10-006 | 1-1546119-5 |
| 2.00 | 9 | 3PCR-09-256 | 1-1546119-4 |
| 2.00 | 9 | 3PCR-09-006 | 1-1546119-3 |
| 1.75 | 8 | 3PCR-08-310 | 3-1546099-2 |
| 1.75 | 8 | 3PCR-08-006 | 1-1546119-2 |
| 1.50 | 7 | 3PCR-07-006 | 1-1546119-0 |
| 1.25 | 6 | 3PCR-06-302 | 3-1546099-1 |
| 1.25 | 6 | 3PCR-06-006 | 1-1437646-2 |
| 1.00 | 5 | 3PCR-05-006 | 1437646-9 |
| .75 | 4 | 3PCR-04-006 | 1546119-8 |
| .50 | 3 | 3PCR-03-006 | 1546099-1 |
| .25 | 2 | 3PCR-02-006 | 1546119-5 |



RECOMMENDED PCB LAYOUT

| | | | | | | | | |
|--|--|------------------|-------------|--|---------|---------------------------------|--|--|
| THIS DRAWING IS A CONTROLLED DOCUMENT. | | DWN / DESIGNED | S. SCHLEGEL | | 4/22/03 | TE Connectivity | | |
| USE DIMENSIONS UNLESS OTHERWISE SPECIFIED. | | CHK / CHECKED | S. YODER | | 6/18/02 | NAME | | |
| DIMENSIONS: INCHES | | APVD / APPROVED | S. YODER | | 6/18/02 | DIBBCCO | | |
| TOLERANCES UNLESS OTHERWISE SPECIFIED: | | PRODUCT SPEC | S. YODER | | 6/18/02 | 3PCR-XX-006 ASSEMBLY | | |
| 0 PLC / DEC: ± - | | APPLICATION SPEC | S. YODER | | 6/18/02 | DRAWING NO | | |
| 1 PLC / DEC: ± - | | SCALE | S. YODER | | 6/18/02 | CAGE CODE | | |
| 2 PLC / DEC: ± .02 | | RESTRICTED TO | S. YODER | | 6/18/02 | A3 00779 | | |
| 3 PLC / DEC: ± .010 | | REVISIONS | S. YODER | | 6/18/02 | G-1437646-9 | | |
| 4 PLC / DEC: ± - | | SCALE | S. YODER | | 6/18/02 | SHEET | | |
| ANGLES / ANGLES ± - | | SCALE | S. YODER | | 6/18/02 | 1 OF 1 | | |
| FINISH / OBERFLAECHE / FARBE | | SCALE | S. YODER | | 6/18/02 | REV | | |
| ACABAMENTO | | SCALE | S. YODER | | 6/18/02 | F | | |
| MATERIAL | | SCALE | S. YODER | | 6/18/02 | CUSTOMER DRAWING | | |
| MATERIALE | | SCALE | S. YODER | | 6/18/02 | DESIGNED PER CLIENT REQUIREMENT | | |
| | | SCALE | S. YODER | | 6/18/02 | SOLD PER REFERENCE | | |

X-ON Electronics

Largest Supplier of Electrical and Electronic Components

Click to view similar products for [Barrier Terminal Blocks](#) category:

Click to view products by [TE Connectivity](#) manufacturer:

Other Similar products are found below :

[6C1N03](#) [6PCR-02-008](#) [6PCR-05-008](#) [6PCR-08-008](#) [6PCR-21-006](#) [6PCV-06-008](#) [6PCV-10-009](#) [6PCV-15-008](#) [6STR-06-006](#) [6STR-08-006](#)
[6STR-12-008](#) [6STR-14-008](#) [6STR-16-008](#) [6STR-17-008](#) [6STR-21-008](#) [6STR-25-008](#) [6STR-27-008](#) [6STV-03-006](#) [6STV-03-008](#) [6STV-04-006](#) [6STV-10-006](#) [6WWR-03](#) [6WWV-12-008](#) [6WWV-16-008](#) [7-1546701-0](#) [72212603](#) [72503-C](#) [72504-C-50](#) [73203](#) [76007](#) [7604-501LF](#)
[77010-50](#) [796985-3](#) [796988-4](#) [7C1N08](#) [8-1437402-5](#) [8-1437402-7](#) [8-1546158-0](#) [870505](#) [870903](#) [8PCR-06-006](#) [8PCV-02-008](#) [8PCV-05-008](#)
[8PCV-09-006](#) [8PCV-15-006](#) [8PCV-17-006](#) [8QCR-03-008](#) [8STV-04-006](#) [9-1437402-3](#) [A103104](#)