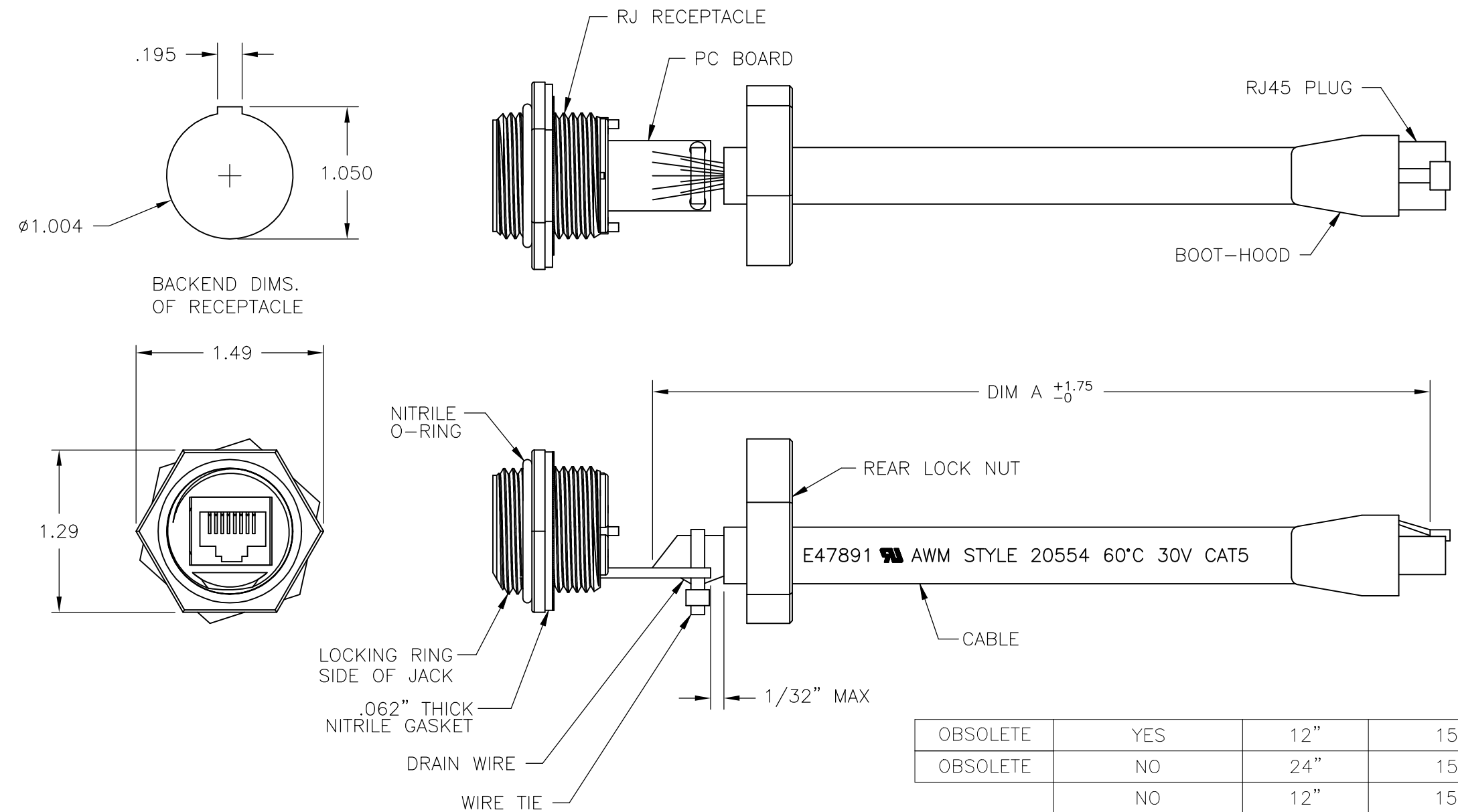


THIS DRAWING IS UNPUBLISHED. RELEASED FOR PUBLICATION  
 © COPYRIGHT - By - ALL RIGHTS RESERVED.

REVISIONS				
P	LTR	DESCRIPTION	DATE	APVD
	F2	REVISED PER ECO-11-004820	11MAR11	RK HMR
	F3	OBSOLETE PNs 1546414-5 & -6	13MAR2018	SH GN



WIRE LIST	
PIN (SAME FOR BOTH CONNECTORS)	
1	WHT/BLU
2	BLUE
3	WHT/ORG
4	GREEN
5	WHT/GRN
6	ORG
7	WHT/BROWN
8	BROWN
	GRND

OBSOLETE	YES	12"	1546414-6
OBSOLETE	NO	24"	1546414-5
	NO	12"	1546414-4
OBSOLETE	YES	12"	1546414-3
OBSOLETE	NO	24"	1546414-2
SUPERSEDED	NO	12"	1546414-1
		CABLE TIE	DIM A
			PART NUMBER

**MATERIALS:**  
 BOOT-HOOD: POLYOLEFIN, BLACK.  
 JACK: CAT 5E PCB.  
 LOCKNUT: ABS, 10% GLASS FILLED, BLACK.  
 PANEL MOUNT HOUSING: CLCOLAC  
 CABLE: 26 AWG 8 CONDUCTOR BLACK PVC JACKET.

THIS DRAWING IS A CONTROLLED DOCUMENT.		DWN S SCHLEGEL 09OCT2002	TE Connectivity																			
DIMENSIONS: INCHES		CHK H WAKEEM 10/9/02																				
TOLERANCES UNLESS OTHERWISE SPECIFIED:		APVD H WAKEEM 10/9/02	NAME ETHERNET PANEL MOUNT RECEPTACLE RJ-45 BULKHEAD PASS THROUGH WITH PATCH CORD																			
<table border="1"> <tr><td>0</td><td>PLC</td><td>± -</td></tr> <tr><td>1</td><td>PLC</td><td>± -</td></tr> <tr><td>2</td><td>PLC</td><td>± .02</td></tr> <tr><td>3</td><td>PLC</td><td>± .005</td></tr> <tr><td>4</td><td>PLC</td><td>± -</td></tr> <tr><td colspan="2">ANGLES</td><td>± 2'</td></tr> </table>		0	PLC	± -	1	PLC	± -	2	PLC	± .02	3	PLC	± .005	4	PLC	± -	ANGLES		± 2'	PRODUCT SPEC -	SIZE A3	CAGE CODE 00779
0	PLC	± -																				
1	PLC	± -																				
2	PLC	± .02																				
3	PLC	± .005																				
4	PLC	± -																				
ANGLES		± 2'																				
MATERIAL -		FINISH -	APPLICATION SPEC -	DRAWING NO 1546414																		
		WEIGHT -	RESTRICTED TO -																			
CUSTOMER DRAWING			SCALE NTS	SHEET 1 OF 1																		
			REV F3																			

## X-ON Electronics

Largest Supplier of Electrical and Electronic Components

*Click to view similar products for [Modular Connectors / Ethernet Connectors](#) category:*

*Click to view products by [TE Connectivity](#) manufacturer:*

Other Similar products are found below :

[8949-H88/06BLKA/SN](#) [74441-0010/BKN](#) [MP1010RX-1000](#) [MP44RX-1000](#) [PHJ-4P4C-1-V-4](#) [PHP-6P6C-5](#) [GAX-3-66](#) [GAX-8-62](#) [GDCX-PA-66-50](#) [GDCX-PN-64](#) [GDCX-PN-66](#) [GDCX-PN-66-50](#) [GDLX-A-66](#) [GDLX-N-66](#) [GDLX-S-66](#) [GDLX-S-88K](#) [GDTX-S-88-50](#) [GDX-PA-1010](#) [GLX-N-1010M-BLK](#) [GLX-S-88M-BLK](#) [GMX-N-1010](#) [GMX-S-1010](#) [GMX-S-66](#) [GMX-SMT4-N-88](#) [GPX-2-64](#) [GSGX-N-2-88](#) [GSGX-N-4-88](#) [GSX-NS2-88-3.05](#) [GSX-NS2-88-3.05-50](#) [GSX-NS-88-3.05-50](#) [PT-108A-8C-UL](#) [PT-J951-8C](#) [PTS-J531-8CS-50UL](#) [1-1775629-2](#) [A-2014-0-4](#) [GWLX-S-88-GR](#) [GWLX-S9-88-YG](#) [DC-1021-8-WH-6](#) [1300530003](#) [1324640-4](#) [RJ11FTVC2G](#) [RJ11FTVC2N](#) [RJFTVX2SA1G](#) [132764-001](#) [1413235](#) [MP88X-1000](#) [MPS88RX-5000](#) [E5288-S000K3-L](#) [E5908-15A242-L](#) [155302-001](#)