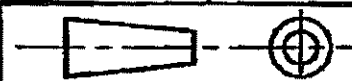


1 OBSOLETE PARTS: OBSOLETE CIS STREAMLINING PER D.RENAUD/D.SINISI  
 2 OBSOLETE

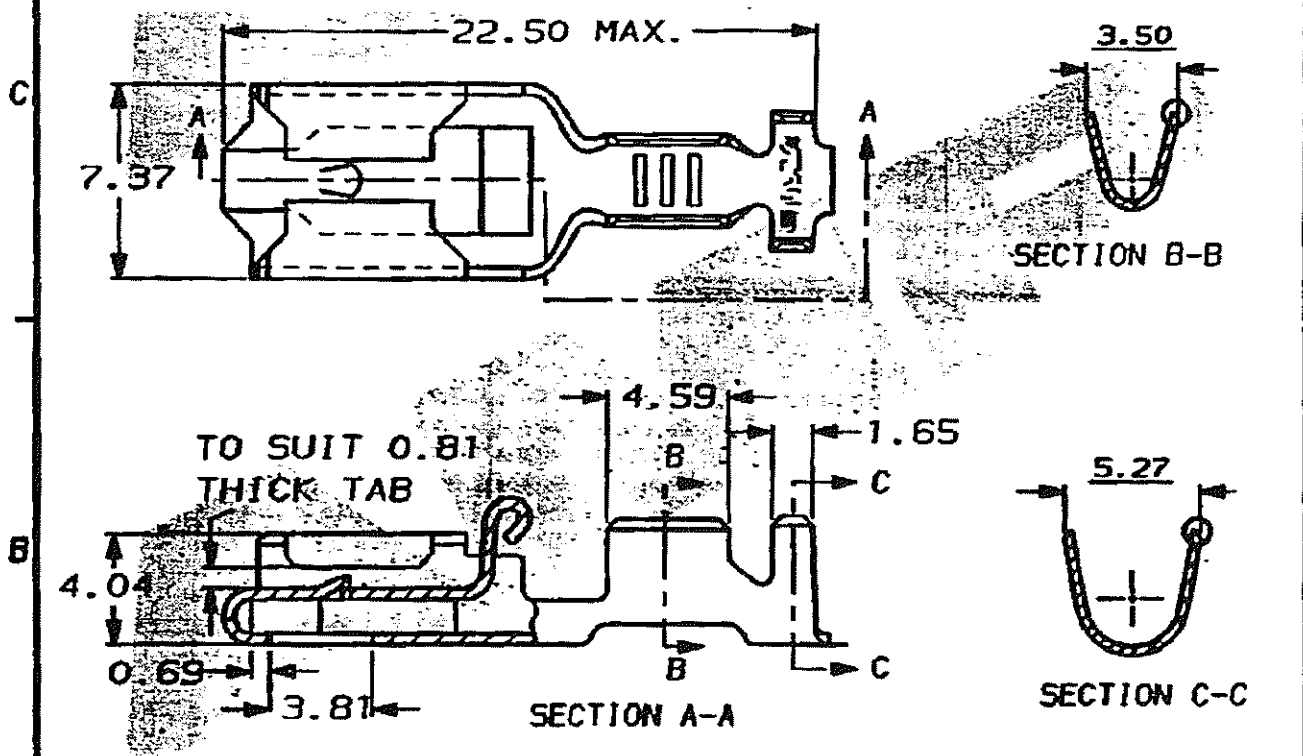
DO NOT SCALE

DIMENSIONS IN MM.



C.A.D. FILE CODE  
S. C154718.AD

| PART NUMBER           | MATERIAL     | FINISH  | REELING             | LOOSE PIECE (REF. ONLY) |
|-----------------------|--------------|---------|---------------------|-------------------------|
| 154718-1              | BRASS        | NONE    | STANDARD            | 341002-1                |
| 154718-2              | PHOS. BRONZE | NONE    | STANDARD            | 341002-2                |
| 154718-3              | BRASS        | TIN     | STANDARD            | 341002-3                |
| 154718-4              | PHOS. BRONZE | TIN     | STANDARD            | <del>341002-4</del> 2   |
| 1 154718-5            | PHOS. BRONZE | NONE    | STANDARD            | 341002-5                |
| 154718-6              | BRASS        | PRE-TIN | STANDARD            | 341002-6                |
| 154718-7              | PHOS. BRONZE | PRE-TIN | STANDARD            | 341002-7                |
| 154718-8              | BRASS        | SILVER  | STANDARD            | 341002-8                |
| 154718-9              | BRASS        | SILVER  | STANDARD            | 341002-9                |
| <del>1-154718-0</del> | BRASS        | PRE-TIN | STANDARD            | ---                     |
| 1-154718-1            | BRASS        | NONE    | REV. REEL VERSION-1 | ---                     |
| 1-154718-2            | PHOS. BRONZE | NONE    | REV. REEL VERSION-2 | ---                     |
| <del>1-154718-3</del> | PHOS. BRONZE | PRE-TIN | STANDARD            | ---                     |
| 2 1-154718-4          | BRASS        | TIN     | REV. REEL VERSION-3 | ---                     |
| 1-154718-5            | PHOS. BRONZE | TIN     | REV. REEL VERSION-4 | ---                     |



WIRE RANGE 0.7 TO 2.0mm<sup>2</sup>

INSULATION RANGE 2.4 TO 3.2mm DIA.

CUSTOMER DWG  
FOR REFERENCE ONLY

RELEASED FOR PUBLICATION  
ORIGINAL 1974

TOLEANCES  
UNLESS OTHERWISE  
STATED  
DEC ± 0.5  
ANGLES ± 1°

DR. D.A. BARRATT 27.11.91  
 CH. D. TERRY APP. D.A. BARRATT



POSITIVE LOCK RECEPTACLE

|     |                           |          |         |       |     |      |          |     |       |
|-----|---------------------------|----------|---------|-------|-----|------|----------|-----|-------|
| AD2 | REVISED PER ECO-11.005150 | RK/HMR   | 28MAR11 | SCALE | LOC | SIZE | DWG. No. | REV | SHEET |
| REV | ECN                       | APPROVED | DATE    | 4/1   | E   | A4   | C154718  | AD2 | 1/1   |

## X-ON Electronics

Largest Supplier of Electrical and Electronic Components

*Click to view similar products for [Automotive Connectors](#) category:*

*Click to view products by [TE Connectivity](#) manufacturer:*

Other Similar products are found below :

[003-018-000](#) [60403001](#) [60993906-B](#) [M902-2131](#) [M902-2161](#) [M902-2344](#) [72.330.1035.1](#) [73.353.4028.0](#) [F119300-B](#) [F166900](#) [F258300-B](#)  
[F358300-B](#) [F407400](#) [F444110](#) [F487000](#) [F509500B-B](#) [827153-1](#) [8N1515-32-24P](#) [9-1326729-8](#) [925474-1](#) [928905-1](#) [964562-4](#) [968782-1](#)  
[GT17SA-8DS-HU](#) [98891-1012](#) [98947-1016](#) [12004147](#) [12004475-L](#) [12010290](#) [12015454](#) [12020219-B](#) [12041318-B](#) [12052225-L](#) [12052466](#)  
[12064869](#) [12004327-B](#) [12015308](#) [12015384](#) [12015909](#) [1-21030-1](#) [12041254](#) [12041318](#) [12047946-B](#) [12047957](#) [12047957-L](#) [12059473](#)  
[12066261](#) [12110546](#) [12110546-B](#) [12131792](#)