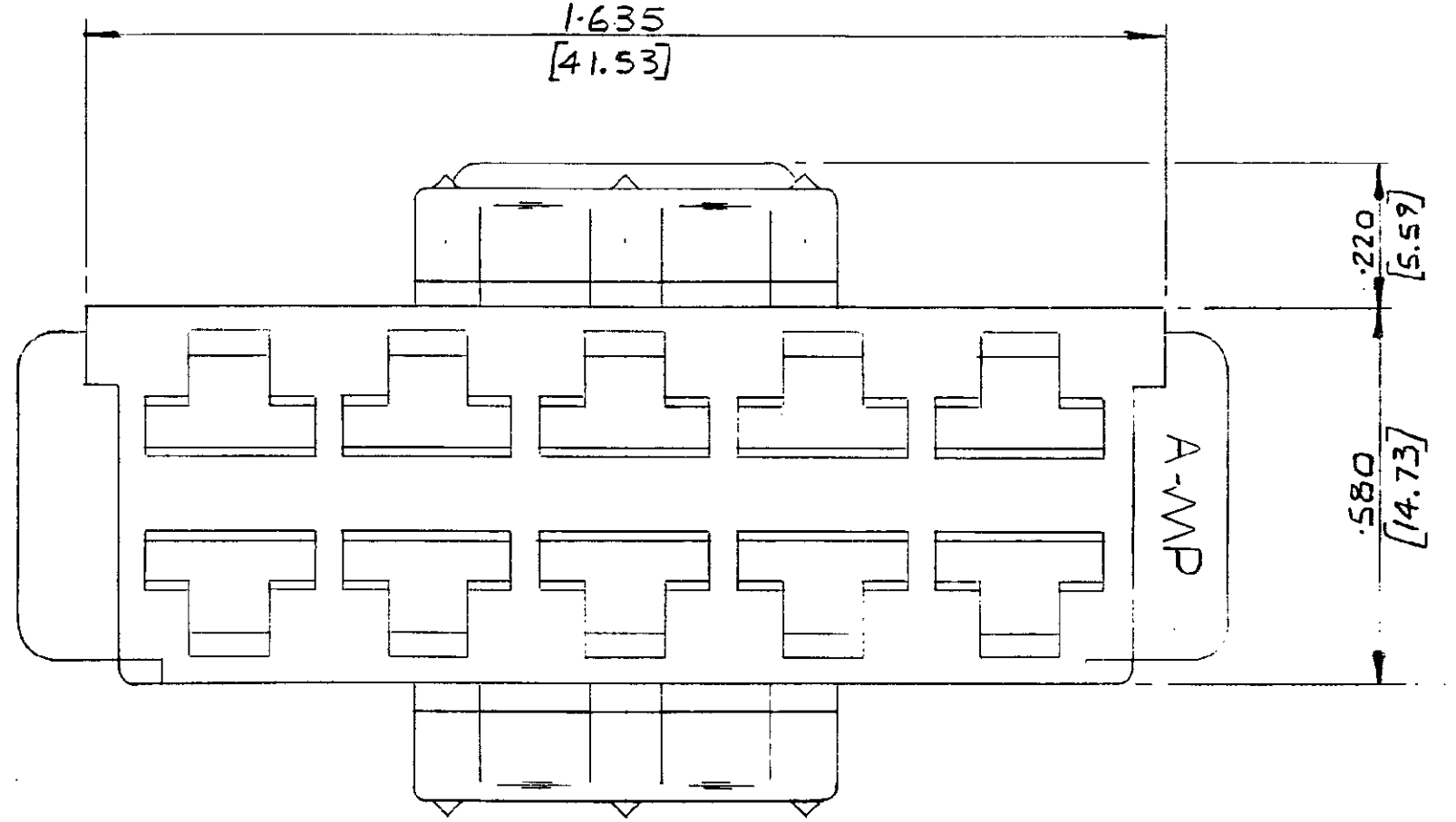
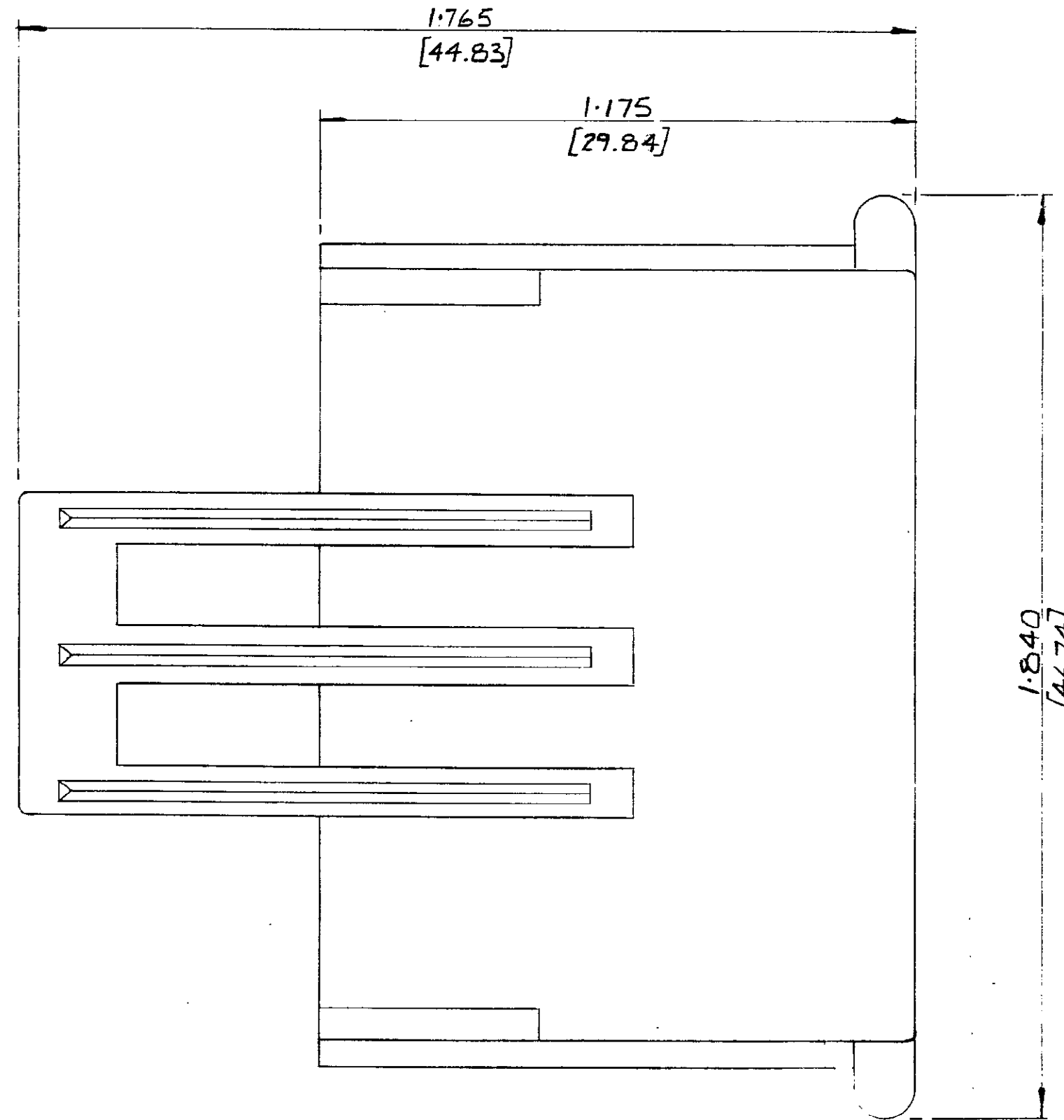
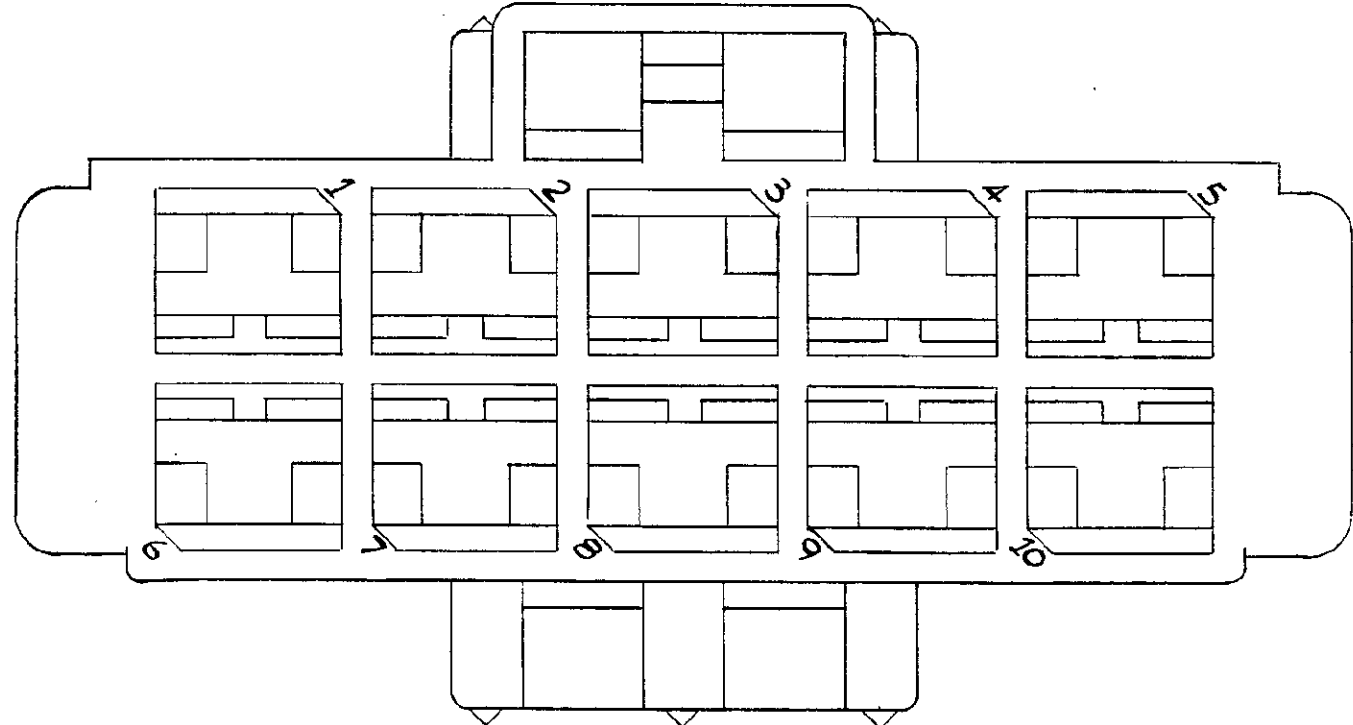
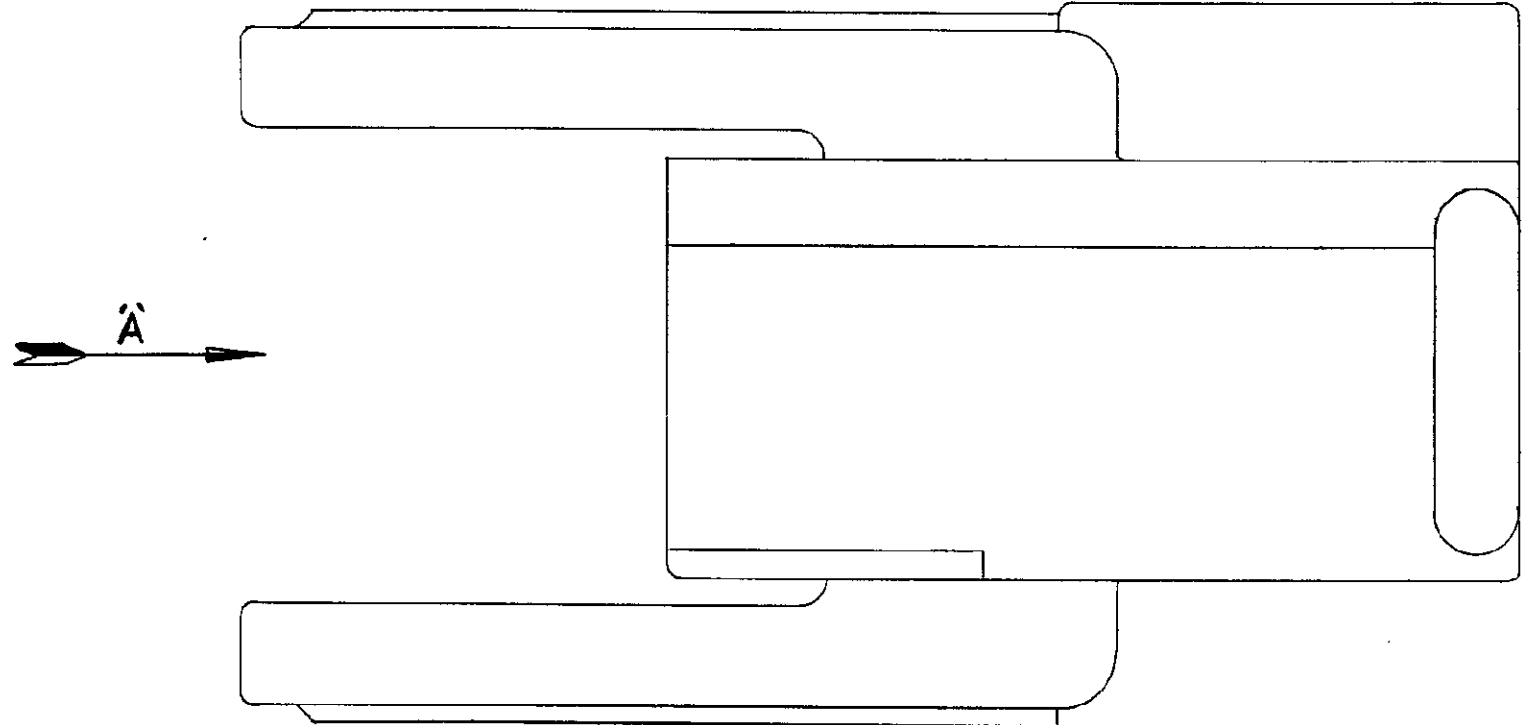


NUMBER C 154980

3rd ANGLE (AMERICAN) PROJECTION

DIMENSIONS IN INCHES. DO NOT SCALE PRINT
DIMENSIONS THUS [] IN MM.



VIEW IN DIRECTION OF ARROW 'A'

154980-9	BLACK
-8	GREY
-7	VIOLET
-6	BLUE
-5	GREEN
-4	YELLOW
-3	ORANGE
-2	RED
-1	BROWN
154980-0	NATURAL
PART NO	FINISH

C MATE WAS MADE		DZ	-	3/9/73	© AMP of GREAT BRITAIN LTD 1974		CUSTOMER COPY REFERENCE ONLY	
B RIBS ADDED		JRR		23/7/74	MATERIAL AND FINISH NYLON 6-6		AMP of Great Britain Ltd	
A FINISH TABLE ADDED		JRR		27/7/74	SEE TABLE		TERMINAL HOUSE, STANMORE, MIDDX.	
O RELEASED FOR REDUCED		JRR		1/1/75	WIRE - RANGE - INSULATION		TYPE	
LTR	REVISION RECORD	DR	CHK	DATE	TOLERANCE EXCEPT AS NOTED ±.015 (0.38) ±.1°	SCALE 4:1	LOC E	NO C-154980
DR	D.C. ROSS 1/3/74	DE			NAME		ID-WAY POSITIVE MATE RECEPTACLE HOUSING	
CHK	K. STEVENS 23/8/74	APP						

PRINT DIST.

X-ON Electronics

Largest Supplier of Electrical and Electronic Components

Click to view similar products for [Automotive Connectors](#) category:

Click to view products by [TE Connectivity](#) manufacturer:

Other Similar products are found below :

[003-018-000](#) [600858](#) [60403001](#) [60993906-B](#) [60993913-B](#) [629515004020001](#) [M83723/71R1808N L/C](#) [M902-2131](#) [M902-2161](#) [M902-2344](#)
[72.330.1035.1](#) [73.353.4028.0](#) [F118010](#) [F119300-B](#) [F132210](#) [F166900](#) [F180100](#) [F258300](#) [F258300-B](#) [F294300-B](#) [F339100](#) [F339700](#)
[F358300-B](#) [F374110](#) [F407400](#) [F412210](#) [F444110](#) [F487000](#) [F495100](#) [F500900-B](#) [F509500B-B](#) [770444-1](#) [827153-1](#) [881735-1](#)
[8N1515-32-24P](#) [9-1326729-8](#) [925467-1](#) [925474-1](#) [928905-1](#) [936398-2](#) [964562-4](#) [964731-2](#) [968782-1](#) [GT17SA-8DS-HU](#) [GT17VS-10DP-](#)
[5.2CF](#) [98315-0001](#) [98315-0010](#) [98891-1012](#) [98895-2014](#) [98936-1039](#)