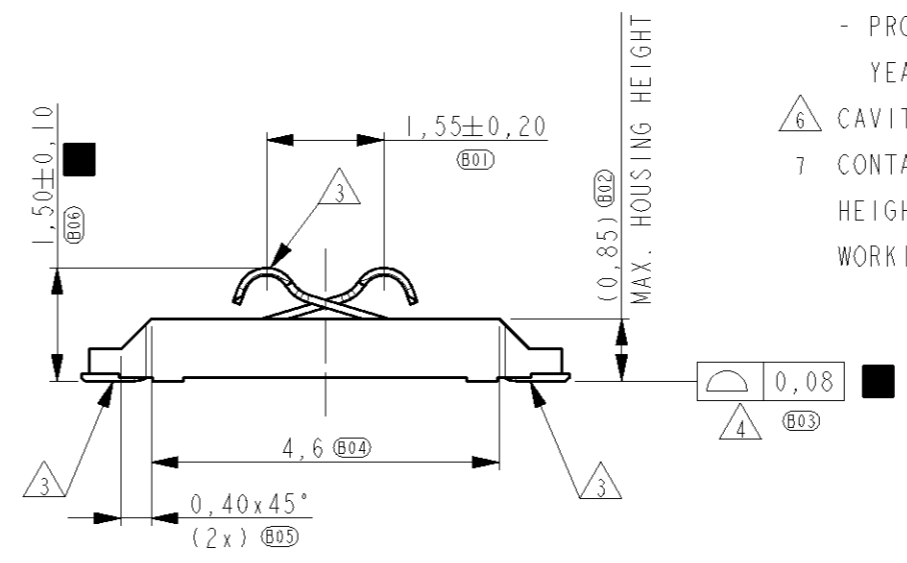
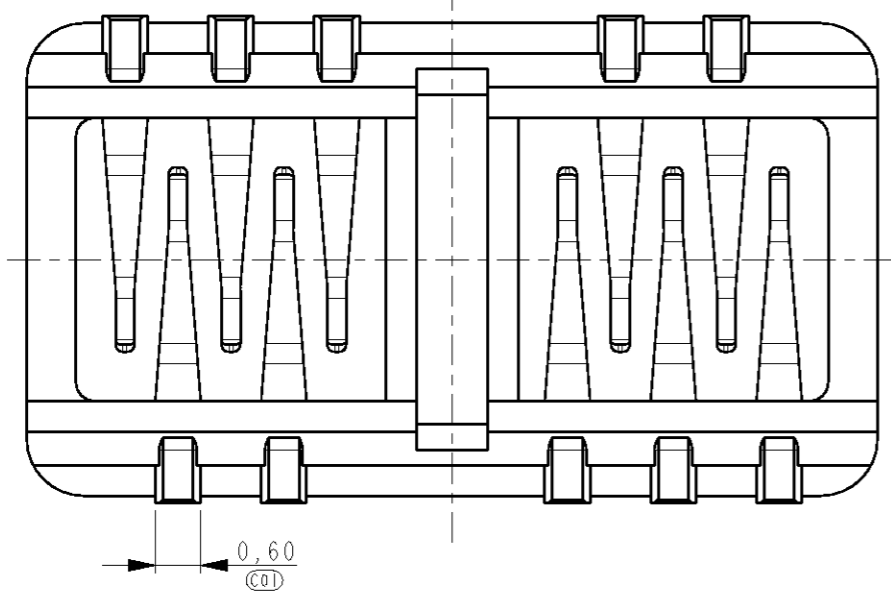
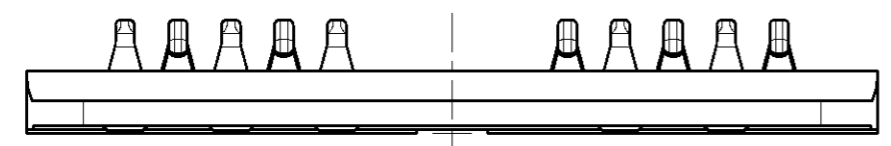
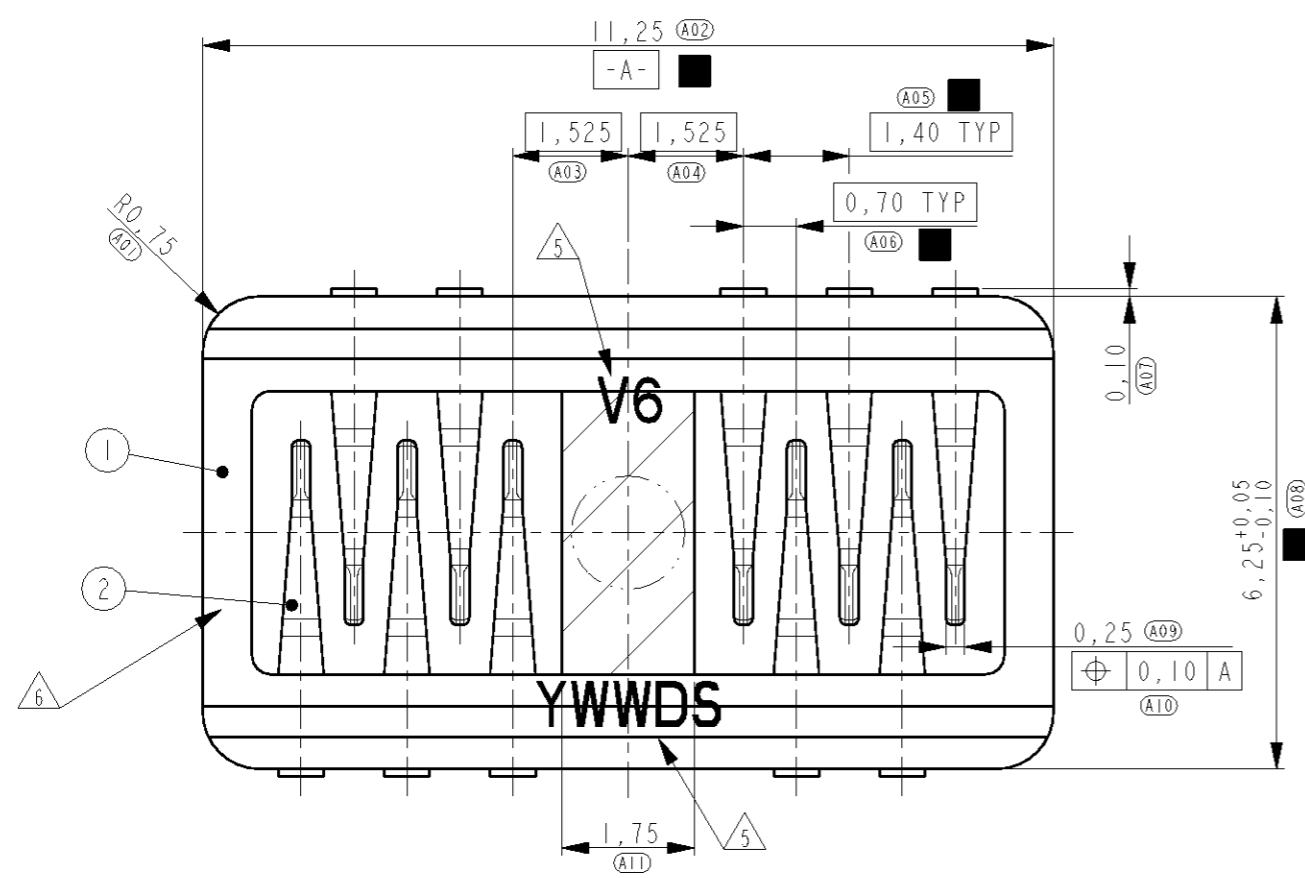


THIS DRAWING IS UNPUBLISHED. RELEASED FOR PUBLICATION
 © COPYRIGHT - BY TYCO ELECTRONICS CORPORATION. ALL RIGHTS RESERVED.

LOC	DIST	REVISIONS			
P	LTR	DESCRIPTION	DATE	DWN	APVD
H	-				
	13	TOLERANCE CHANGE DIM A08	12APR2010	PW	JD
	A	ECR-10-016181	29JUL2010	PW	JD



NOTES:

- P.N. AS SHOWN 1551246-2.
- DRAWING REPRESENTS PART VERSION V6.
- PLATING: 1,27µm MIN. NICKEL ALL OVER, 0,5µm MIN GOLD ON CONTACT POINTS, GOLD FLASH ON SOLDER TAILS.
- COPLANARITY OF SOLDER SURFACES 0,08 MAX.
- LASER MARKING:
- PART VERSION ('V6'),
- PRODUCTION DATE CODE ('YWWDS'
YEAR, WEEK, DAY + DAY/NIGHT SHIFT)
- CAVITY ID, RECESSED.
- CONTACT NORMAL FORCE 0,3N AT NOMINAL WORKING HEIGHT OF 0,95mm MEASURED FROM THE PWB. WORKING RANGE IS ±0,10mm (0,85 - 1,05mm)

ITEM NO.	DESCRIPTION	MATERIAL	FINISH
2	CONTACT	COPPER ALLOY	GOLD PLATED
1	HOUSING	PLASTIC, GF	-

THIS DRAWING IS A CONTROLLED DOCUMENT FOR TYCO ELECTRONICS CORPORATION IT IS SUBJECT TO CHANGE AND THE CONTROLLING ENGINEERING ORGANIZATION SHOULD BE CONTACTED FOR THE LATEST REVISION.

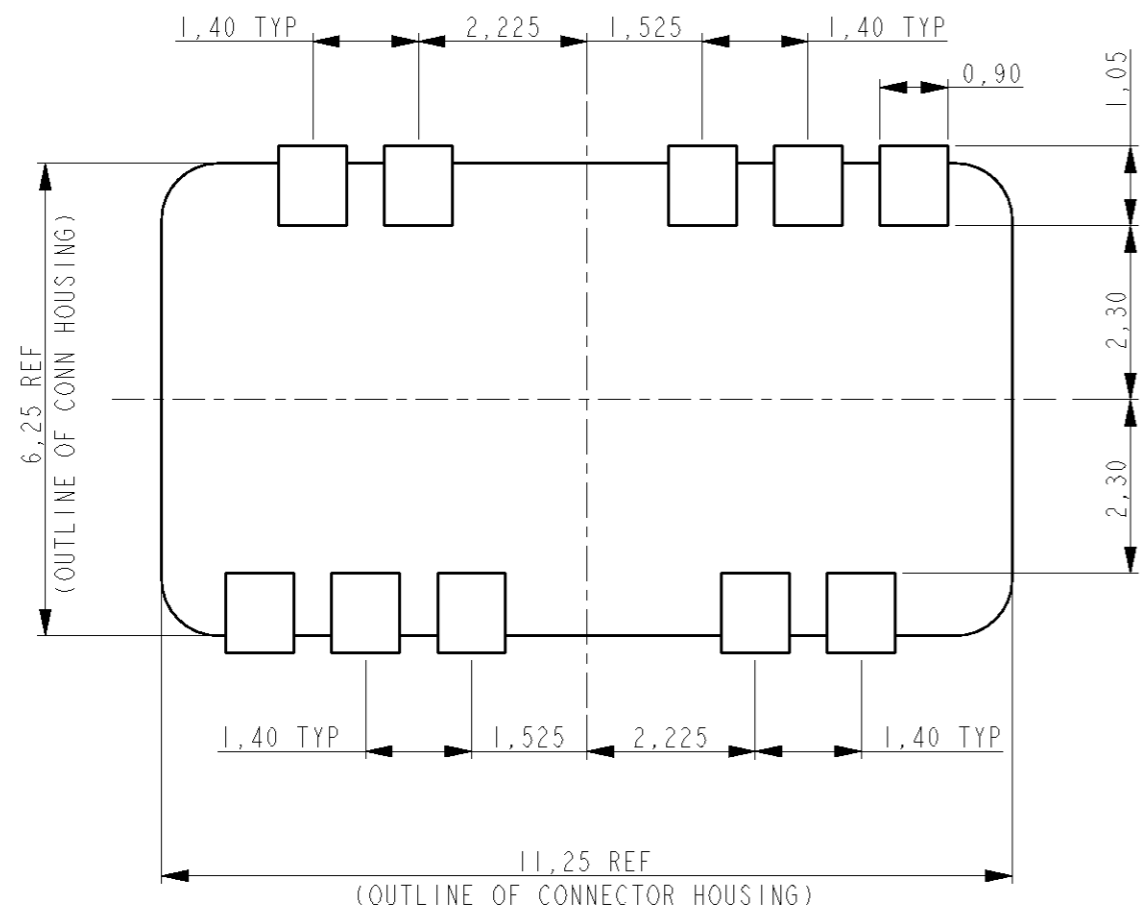
DIMENSIONS:		TOLERANCES UNLESS OTHERWISE SPECIFIED:	
mm			
	0 PLC	±0,2	
	1 PLC	±0,1	
	2 PLC	±0,05	
	3 PLC	±-	
	4 PLC	±-	
	ANGLES	±-	
MATERIAL		FINISH	

DWN	07-May-09	Tyco Electronics Corporation 's-Hertogenbosch, Nederland	
CHK	P. Willems		
APVD	M. Gosselink		
PRODUCT SPEC	J. Dittner		
APPLICATION SPEC	108-19392	NAME	10 POS DOUBLE ROW B+B CONNECTOR
WEIGHT	0,055 gr	SIZE	A3
CUSTOMER DRAWING		CAGE CODE	00779
		DRAWING NO	1551246
		RESTRICTED TO	-
		SCALE	10:1
		SHEET	1 OF 3
		REV	A

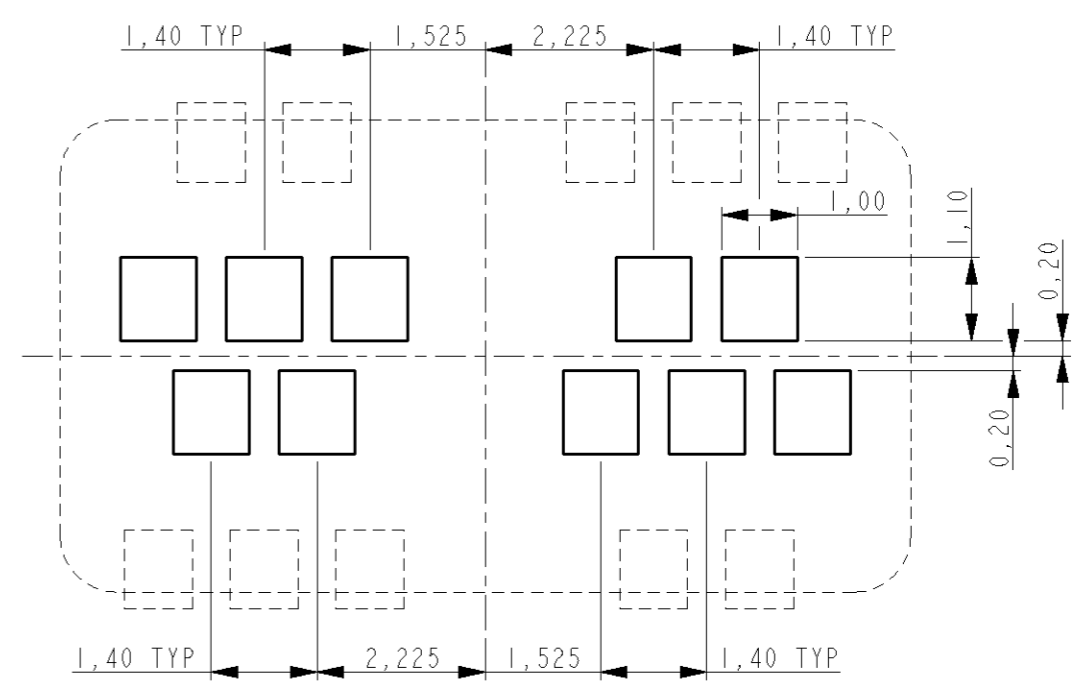
THIS DRAWING IS UNPUBLISHED. RELEASED FOR PUBLICATION

© COPYRIGHT - BY TYCO ELECTRONICS CORPORATION. ALL RIGHTS RESERVED.

LOC	DIST	REVISIONS					
H	-	P	LTR	DESCRIPTION	DATE	DWN	APVD
				SEE SHEET 1	-	-	-



RECOMMENDED PWB LAY-OUT
PWB SOLDER SIDE



RECOMMENDED PWB LAY-OUT
PWB CONTACT SIDE

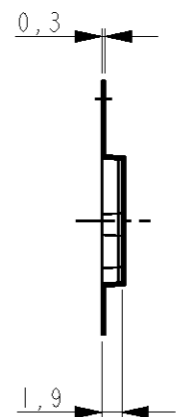
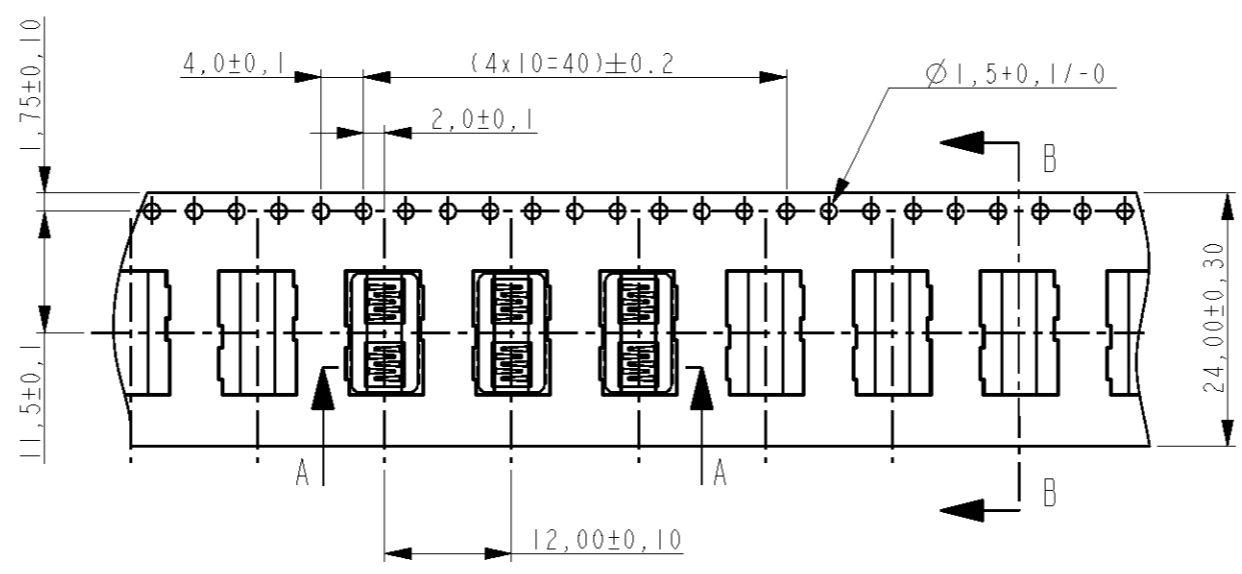
THIS DRAWING IS A CONTROLLED DOCUMENT FOR TYCO ELECTRONICS CORPORATION IT IS SUBJECT TO CHANGE AND THE CONTROLLING ENGINEERING ORGANIZATION SHOULD BE CONTACTED FOR THE LATEST REVISION.		DWN P. Willems 07-May-09	Tyco Electronics Tyco Electronics Corporation 's-Hertogenbosch, Nederland	
DIMENSIONS: mm		CHK M. Gosselink	NAME 10 POS DOUBLE ROW B+B CONNECTOR	
TOLERANCES UNLESS OTHERWISE SPECIFIED: 0 PLC ±0,2 1 PLC ±0,1 2 PLC ±0,05 3 PLC ± 4 PLC ± ANGLES ±		APVD J. Dittner	PRODUCT SPEC 108-19392	
MATERIAL -		FINISH -	APPLICATION SPEC -	RESTRICTED TO -
		WEIGHT 0,055 gr	SIZE A3	CAGE CODE 00779
		CUSTOMER DRAWING	DRAWING NO C=1551246	SCALE 10:1
			SHEET 2	OF 3
			REV A	

THIS DRAWING IS UNPUBLISHED. RELEASED FOR PUBLICATION

© COPYRIGHT - BY TYCO ELECTRONICS CORPORATION. ALL RIGHTS RESERVED.

LOC	DIST	REVISIONS			
P	LTR	DESCRIPTION	DATE	DWN	APVD
H	-	SEE SHEET 1	-	-	-

SECTION A-A



SECTION B-B

UNREEL DIRECTION →

NOTES:

- 1 REEL DIMENSIONS: 330x100x32,4mm
- 2 QTY PER REEL: 2500pcs

<small>THIS DRAWING IS A CONTROLLED DOCUMENT FOR TYCO ELECTRONICS CORPORATION IT IS SUBJECT TO CHANGE AND THE CONTROLLING ENGINEERING ORGANIZATION SHOULD BE CONTACTED FOR THE LATEST REVISION.</small>		DWN P. Willems 07-May-09 CHK M. Gosselink APVD J. Dittner	Tyco Electronics Corporation 's-Hertogenbosch, Nederland
DIMENSIONS: mm	TOLERANCES UNLESS OTHERWISE SPECIFIED: 0 PLC ±0,2 1 PLC ±0,1 2 PLC ±0,05 3 PLC ±- 4 PLC ±- ANGLES ±-	PRODUCT SPEC 108-19392 APPLICATION SPEC - WEIGHT 0,055 gr	NAME 10 POS DOUBLE ROW B+B CONNECTOR SIZE A3 CAGE CODE 00779 DRAWING NO C=1551246 RESTRICTED TO -
MATERIAL -	FINISH -	CUSTOMER DRAWING	SCALE 10:1 SHEET 3 OF 3 REV A

X-ON Electronics

Largest Supplier of Electrical and Electronic Components

Click to view similar products for [Board to Board & Mezzanine Connectors](#) category:

Click to view products by [TE Connectivity](#) manufacturer:

Other Similar products are found below :

[589158040000018](#) [FCN-230C068-11](#) [FCN-268F012-G/BD](#) [FCN-268F036-G/BD](#) [FCN-268M012-G/0D](#) [FCN-268M024-G/1D](#) [FCN-723J004/1](#) [MIS-048-01-F-D-DP-K](#) [832-10-034-10-001000](#) [FX4C-80S-1.27DSA](#) [FCN-214Q030-G/0](#) [FCN-234P048-G/0](#) [FCN-235D050-G/C](#) [210-93-314-41-105000](#) [2-22603-0](#) [MDF7-40DP-2.54DSA\(55\)](#) [AXG720047](#) [5031084030](#) [MIT-114-03-F-D-K](#) [55323-1519](#) [DF33-2P-3.3DSA\(24\)](#) [YFT-20-05-H-03-SB-K](#) [503308-3040](#) [026-6203-PDB](#) [027-6203-PDB](#) [069159702701000](#) [10123981-102LF](#) [101A10019X](#) [55650-0588-C](#) [68684-306](#) [75140-7012](#) [589159005003045](#) [194261-1](#) [FCN-268F024-G0D](#) [10124054-515LF](#) [68685-603](#) [8-1616154-3](#) [MIS-019-01-F-D](#) [589159005002045](#) [541371078](#) [IL-WX-10PB-HF-B-E1000E](#) [FCN-268M024-G/3D](#) [20021832-06016C1LF](#) [KX15-20KLDL-E1000E](#) [MDF7-16DP-2.54DSA\(55\)](#) [AXE810124](#) [FCN-214J100-G/0](#) [FCN-230C068-E/S](#) [AXE812124](#) [AXE816124](#)