

Specifications:
 Single Pole Double Throw
 Break-Before-Make

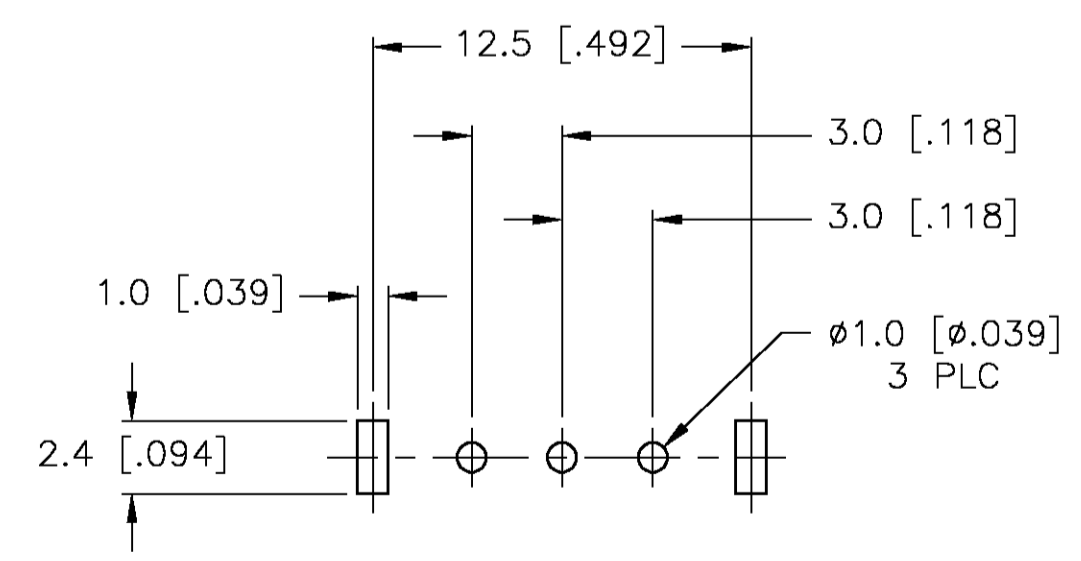
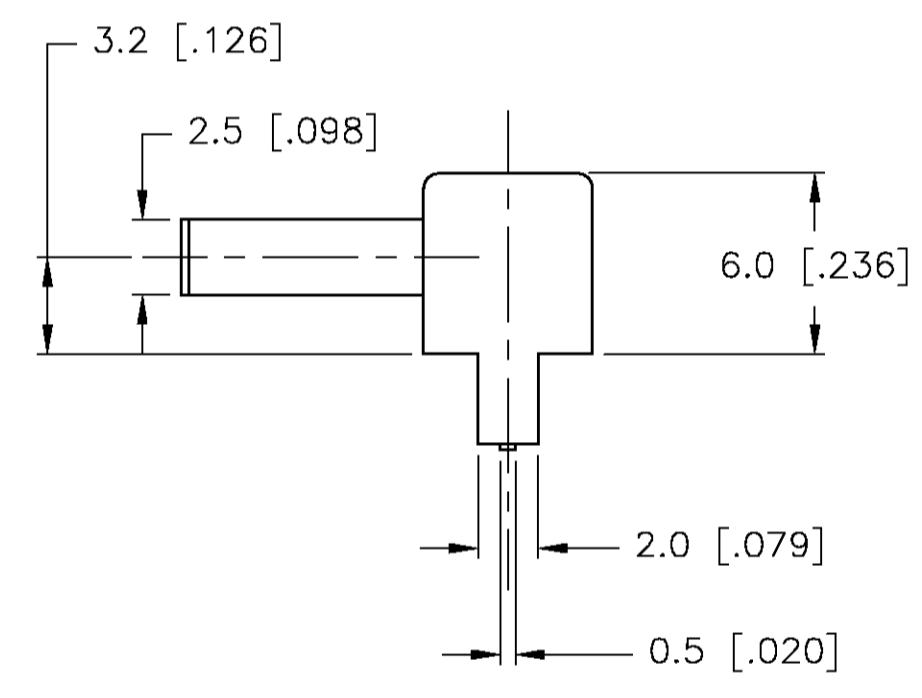
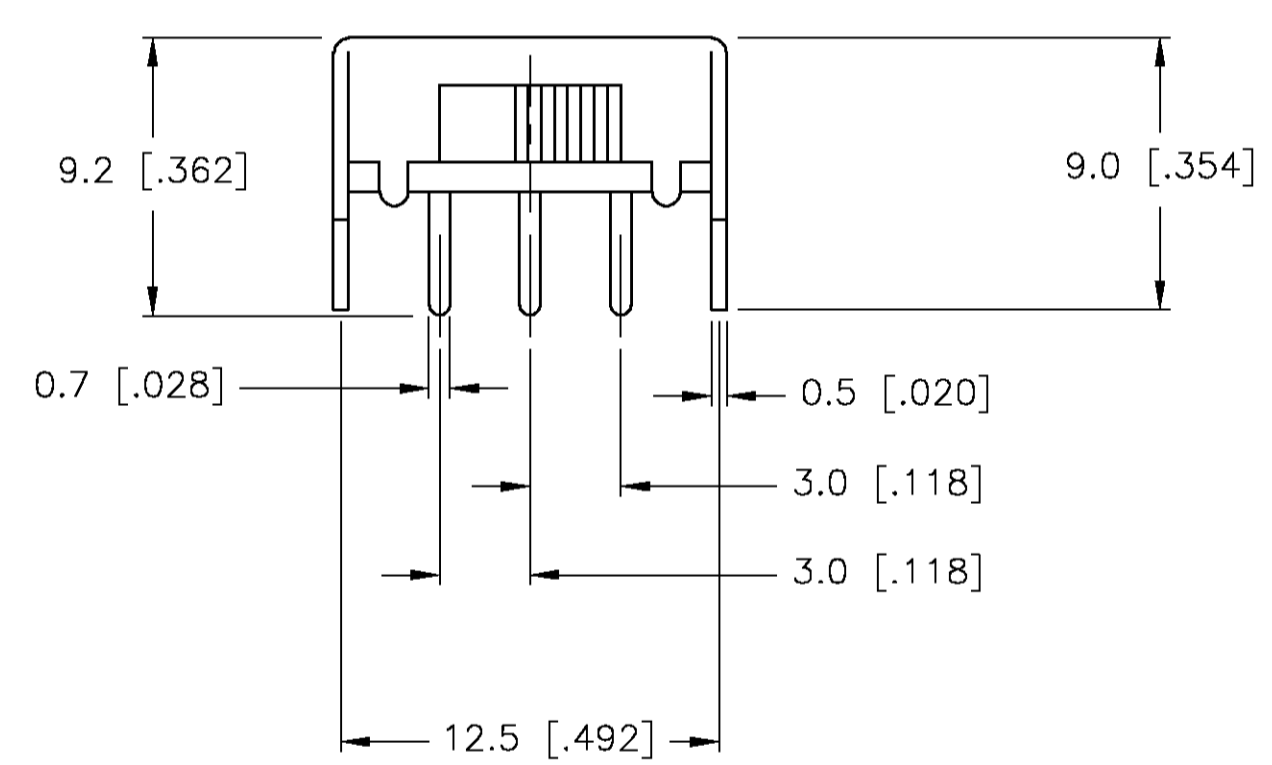
Materials:
 Actuator, POM, UL94-HB
 Board, Phenolic Laminated Sheet, UL94-HB
 Frame, Steel, Nickel plate
 Terminal, Copper Alloy, Silver over Copper plate, or Gold Flash over Copper plate
 Contact Clip, Copper Alloy, Silver plate, or Gold Flash
 Coil Spring, Galvanized Spring wire
 Seal, Epoxy

Electrical:
 Maximum Contact Rating, .5A@50VDC (Silver), .4A@20VDC (Gold) Per EIA-448, Method 6
 Minimum Contact rating 1milliamp@ 5V DC
 Initial Contact resistance, 50 milliohms max, Per EIA-364-23B, each position
 Insulation Resistance, 100 Megohm Min @ 500V DC, Per EIA-364-21C each position
 Dielectric strength, 500 V AC, Per EIA-364-20B, Condition 1, each position.

Mechanical:
 Actuation force, 100-450 GF
 Actuation Travel, 2.5mm
 Life Expectancy, 10,000 cycles, Per EIA-448, Method 8 and 9
 Vibration, Per EIA 364-28, Condition VII, Level E
 Mechanical Shock, Per EIA-364-27, Condition A

Environmental:
 Operating Temperature, -20 to +70 degrees C, Per EIA 448, Method 10
 Storage Temperature, -25 to +80 degrees C @ 40% R.H.
 Humidity and Temperature Cycling Per EIA-364-31B, Method III
 Temperature Life Per EIA-364-17B, Method B, Temperature Test Condition 3, Time Condition B
 Thermal Shock, Per EIA-364-32C, -25 to 80 degrees C
 Solderability, Per EIA-364-52, Class 2, Category 1, 95% Minimum coverage
 Resistance to Solder Heat, Per EIA-364-56A, Procedure 3, Condition B

Mark Per TYCO Specification 202-37



RECOMMENDED MOUNTING PATTERN

GOLD	1571672-2
SILVER	1571672-1
PLATING	PART NUMBER

THIS DRAWING IS A CONTROLLED DOCUMENT.		DIN R BROWN 10SEP03	Tyco Electronics Corporation Harrisburg, PA
DIMENSIONS: MM		CHK M SARVER 10SEP03	
TOLERANCES UNLESS OTHERWISE SPECIFIED: 0 PLC ± - 1 PLC ± 0.3 [.012] 2 PLC ± - 3 PLC ± - 4 PLC ± - ANGLES ± ± -		APVD M SARVER 10SEP03	NAME
		PRODUCT SPEC	SLIDE SWITCH, RIGHT ANGLE SPDT
MATERIAL		APPLICATION SPEC	RESTRICTED TO
FINISH		SIZE CAGE CODE DRAWING NO	A1 00779 C=1571672
CUSTOMER DRAWING		WEIGHT	SCALE 4:1 SHEET 1 OF 1 REV A

X-ON Electronics

Largest Supplier of Electrical and Electronic Components

Click to view similar products for [D-Sub Standard Connectors](#) category:

Click to view products by [TE Connectivity](#) manufacturer:

Other Similar products are found below :

[DCM37S732N](#) [DAM15P500](#) [DEV09S364GTLF](#) [DEM09P032N](#) [DDM50P732N](#) [DAM15S332N](#) [173109-2218](#) [173109-2466](#) [173109-2436](#)
[173109-2435](#) [56F706-005-LI](#) [56F711-015](#) [015-0341-000](#) [015-0372-008](#) [015-8544-011](#) [017041-0005](#) [020419-0104](#) [012-0515-000](#) [012-9507-](#)
[034](#) [012-9507-114](#) [012-9534-001](#) [020745-0008](#) [609-25P](#) [M24308/2-23Z](#) [M243082310F](#) [M243082410F](#) [M243082411F](#) [M24308/4-21](#)
[CT1A18-11PSA206](#) [CT1N36-5SC](#) [CT2-16S-17PS](#) [CT2-20-15PCAU](#) [CT2-24-12PS](#) [CT2-24-28PSF127A206](#) [CT2-32-9PC](#) [CT6F9767-14-4-](#)
[14S-5PC](#) [CT6FA10SL-4PS](#) [CT7-18-10SC](#) [CT7-18-10SCAU](#) [CT7-18-12SCAU](#) [CT7-18-1PC](#) [CT7-18-1PCAU](#) [CT7-18-21SCAU](#) [M83513/01-](#)
[FC](#) [M83723/76W24619 L/C](#) [M85049/48-3-2F](#) [69001-865](#) [6STD09PCM99B70X](#) [6STD09SCM99B30X](#) [6STD09SCT99S40X](#)