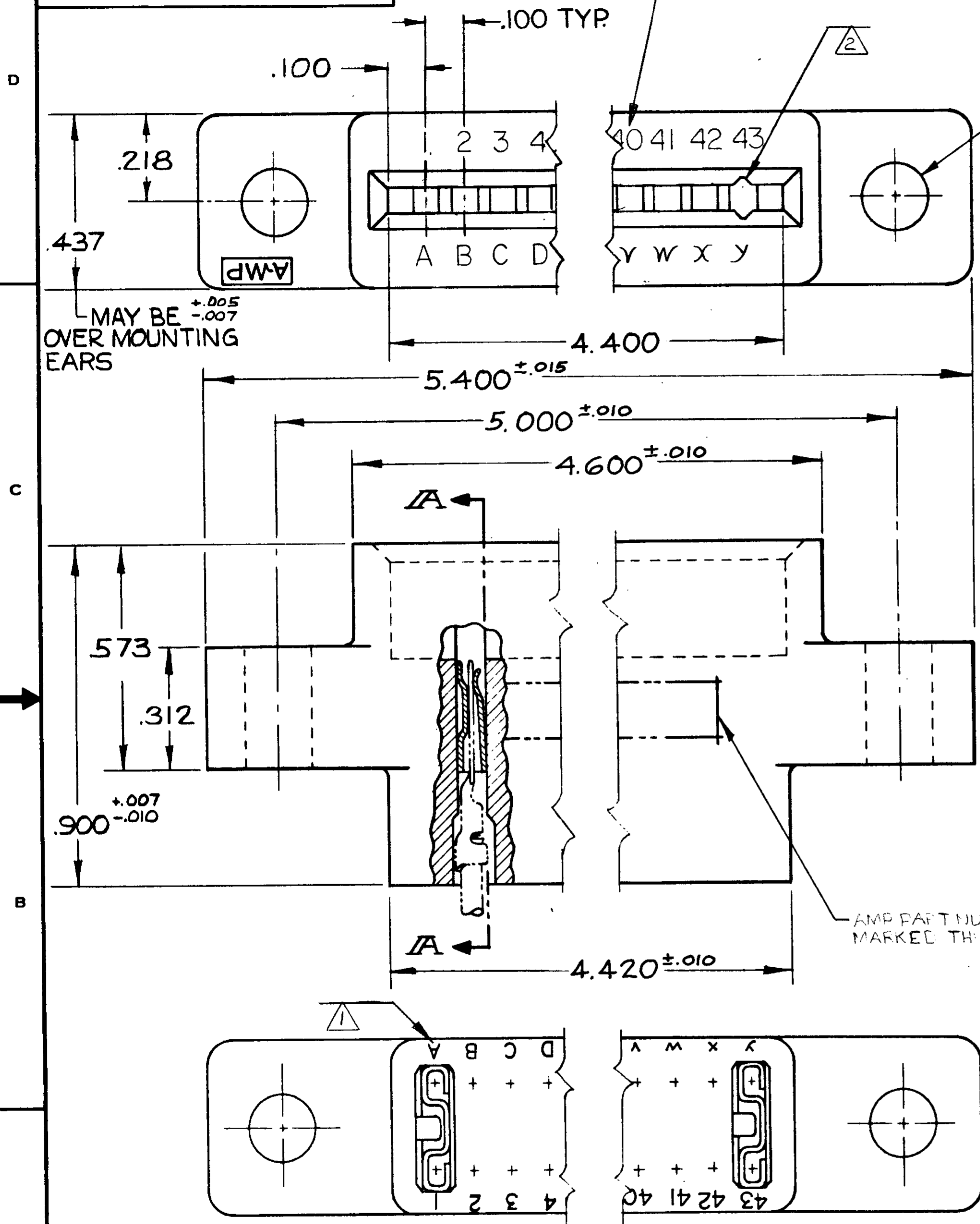


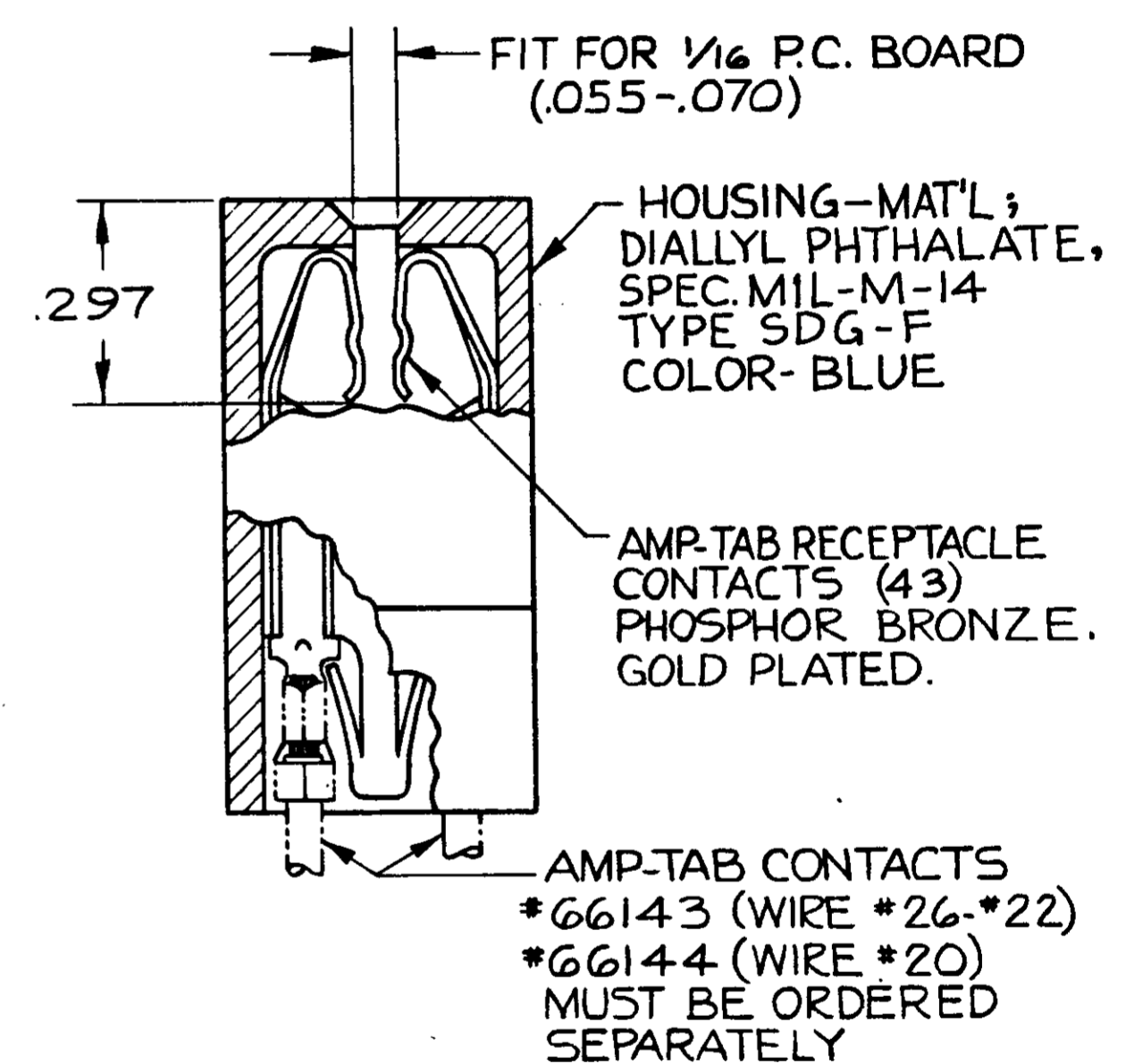
© 1963 BY AMP INCORPORATED. ALL RIGHTS RESERVED. AMP PRODUCTS COVERED BY PATENTS AND/OR PATENTS PENDING. APPROVED PER GOVT CONTRACT NO.

REVISIONS				
ZONE	LTR	DESCRIPTION	DATE	APPROVED
	R	ECO-08-020973	PY 11-08	JW



582561-1 1. AS SHOWN. "J" DIA. HOLES = .156
 OBS. ~~582561-2 1. SAME AS -1 EXCEPT.~~
~~2. "J" DIA. HOLES = .128~~

~~(1) 582561-1 1. SAME AS -1 EXCEPT TO HAVE CAVITY IDENTIFICATION ON TOP SURFACE OF HOUSING.~~



SECTION A-A

NOTE:
 △ UPPER CASE LETTERS 1st. ALPHABET, LOWER CASE LETTERS 2nd ALPHABET, OMIT LETTERS G, I, O, & Q.
 CIRCUIT CAVITY IDENTIFICATION MARKING REF. L-C-21097.
 GROOVES FOR ON CONTACT KEYING AMP'S OPTION DEPENDING ON METHOD OF MANUFACTURE. FOR "ON CONTACT" KEYING USE KEYING PLUG P/N 583487-1. (MUST BE ORDERED SEPARATELY.)

3. LASER MARKING ACCEPTABLE FOR ALL MARKING

UNLESS OTHERWISE SPECIFIED DIMENSIONS ARE IN INCHES TOLERANCES ON FRACTIONS DECIMALS ANGLES ± $\frac{1}{16}$ ± .005 ± $\frac{1}{2}$		CONTRACT NO.		AMP INCORPORATED HARRISBURG, PENNSYLVANIA	
DR <i>J. David</i> DATE 6-7-67		CHK <i>J.S. Heide</i> DATE 8/9/67		NAME 43 POSITION AMP-TAB CONNECTOR .100 CENTERS DUAL	
MATERIAL SEE CALLOUT		DSGN ENGR		APPD <i>J.R. ...</i> DATE 2/1/67	
HEAT TREAT —		DSGN APPD		APPD <i>R. ...</i> DATE 2/1/67	
FINISH SEE CALLOUT		OTHER APPD		SIZE C	CODE IDENT NO 00779
				NUMBER 582561	RFV R
				SCALE 4-1	WT CALC ACTUAL SHEET

X-ON Electronics

Largest Supplier of Electrical and Electronic Components

Click to view similar products for [Headers & Wire Housings](#) category:

Click to view products by [TE Connectivity](#) manufacturer:

Other Similar products are found below :

[95000-104TRLF](#) [10135584-644402LF](#) [DF62W-EP2022PCA](#) [95000-106TRLF](#) [DF62W-2022SCA](#) [DF62W-EP2022PC](#) [2203348](#) [DF62W-2022SC](#) [1084018](#) [1029039](#) [1084017](#) [802-10-012-10-002000](#) [1112640](#) [1112639](#) [891-007-9SS-BST1T](#) [000-34000](#) [0008550134](#) [0009482033](#) [0009507031](#) [57102-F02-18ULF](#) [57102-S06-03LF](#) [57202-S52-04LF](#) [PCN6-15S-2.5E](#) [0039019024](#) [58102-G61-06LF](#) [582553-1](#) [0009485154](#) [0009508121](#) [0022285053](#) [0050291907](#) [018731A](#) [LY20-4P-DT1-P1E-BR](#) [02.125.8002.8](#) [60101931](#) [60598-1 \(Cut Strip\)](#) [M1625-3R/100](#) [61062-3](#) [61082-181009](#) [CSU011177004](#) [636-1427](#) [638009-1](#) [641938-9](#) [641991-4](#) [644168-1](#) [644827-2](#) [647662-1](#) [65039-019ELF](#) [65692-001LF](#) [65781-018](#) [65781-047](#)