

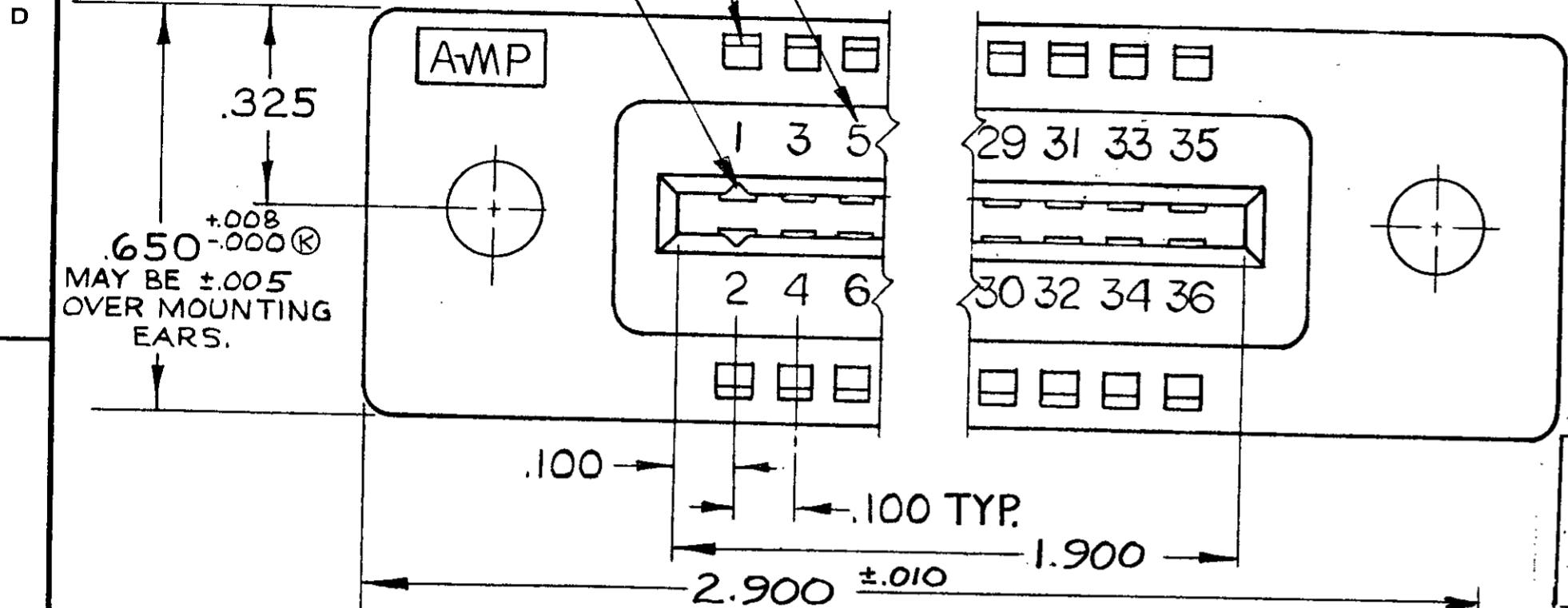
© 1967 BY AMP INCORPORATED. ALL RIGHTS RESERVED. AMP PRODUCTS COVERED BY PATENTS AND/OR PATENTS PENDING. APPROVED PER GOVT CONTRACT NO.

LOCATION FOR AMP-TAB FEMALE CONTACT

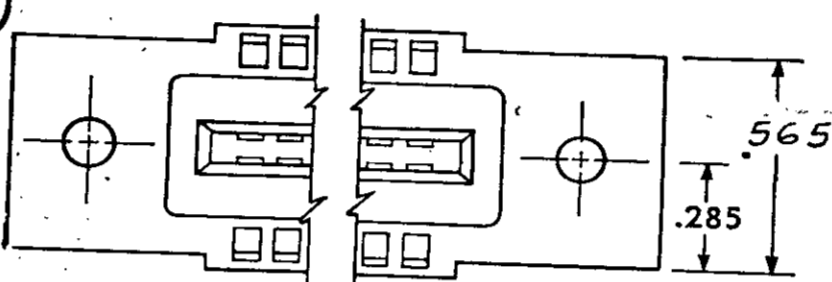
CAVITY IDENTIFICATION ON P/N (I)-582587-T ONLY.

(I)-582587-1. SAME AS -1 EXCEPT TO HAVE CAVITY IDENT. ON TOP SURFACE OF HOUSING.

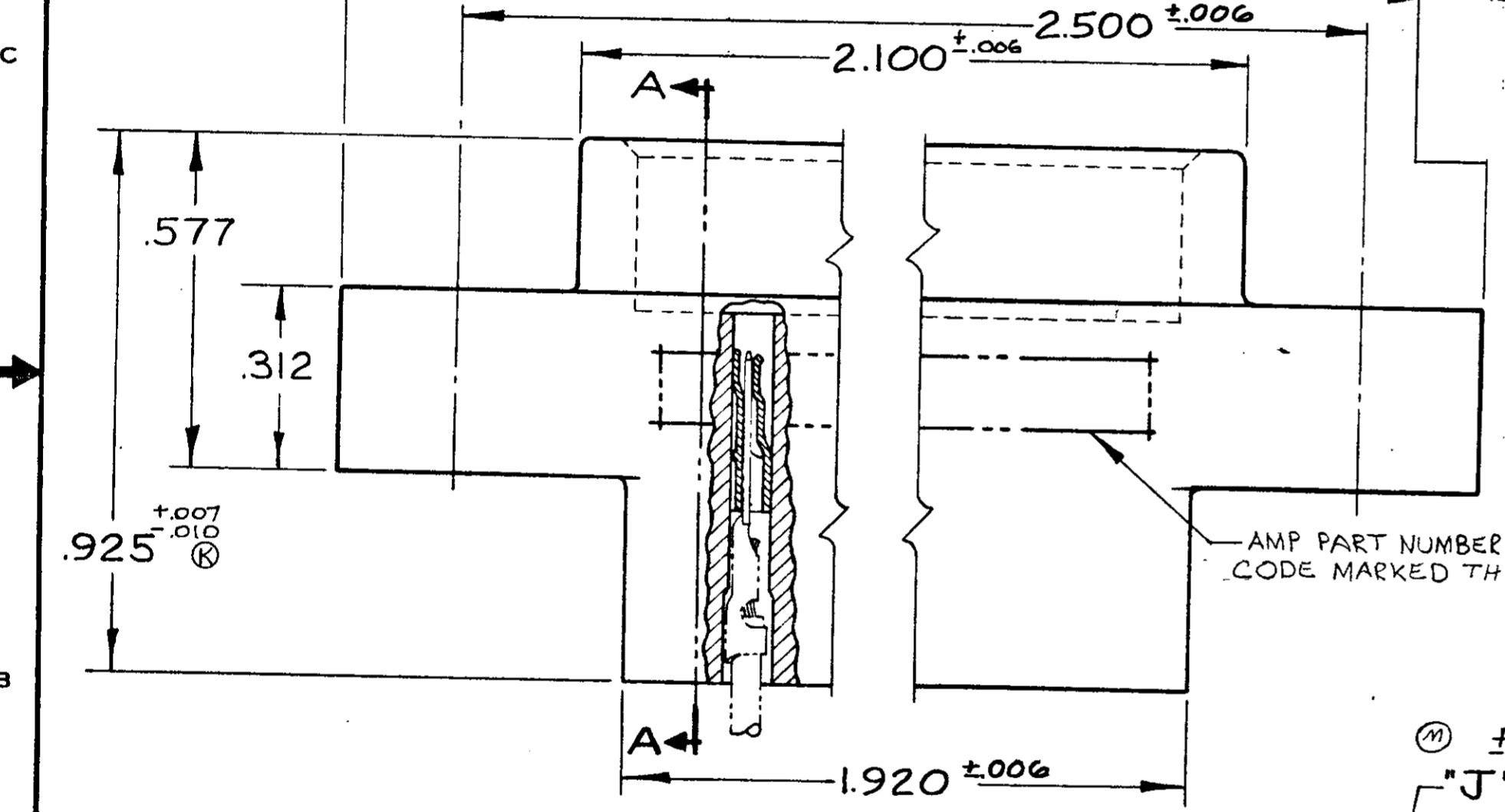
| ZONE | | LTR | | DESCRIPTION | DATE | APPROVED |
|------|--|-----|--|---------------|----------|----------|
| | | | | ECO-08-020973 | PY 11-08 | JW |



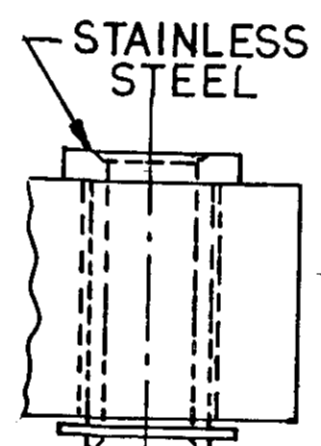
582587-1 1. AS SHOWN "J" DIA. HOLES = .128
 OBS 582587-2 1. SAME AS -1 EXCEPT: "J" DIA. HOLES = .156



4. SAME AS -1 EXCEPT: OBSOLETE FLOATING BUSHINGS. (SEE DETAIL "B")
 5. SAME AS -1 EXCEPT: FLOATING BUSHINGS. (SEE DETAIL "C")

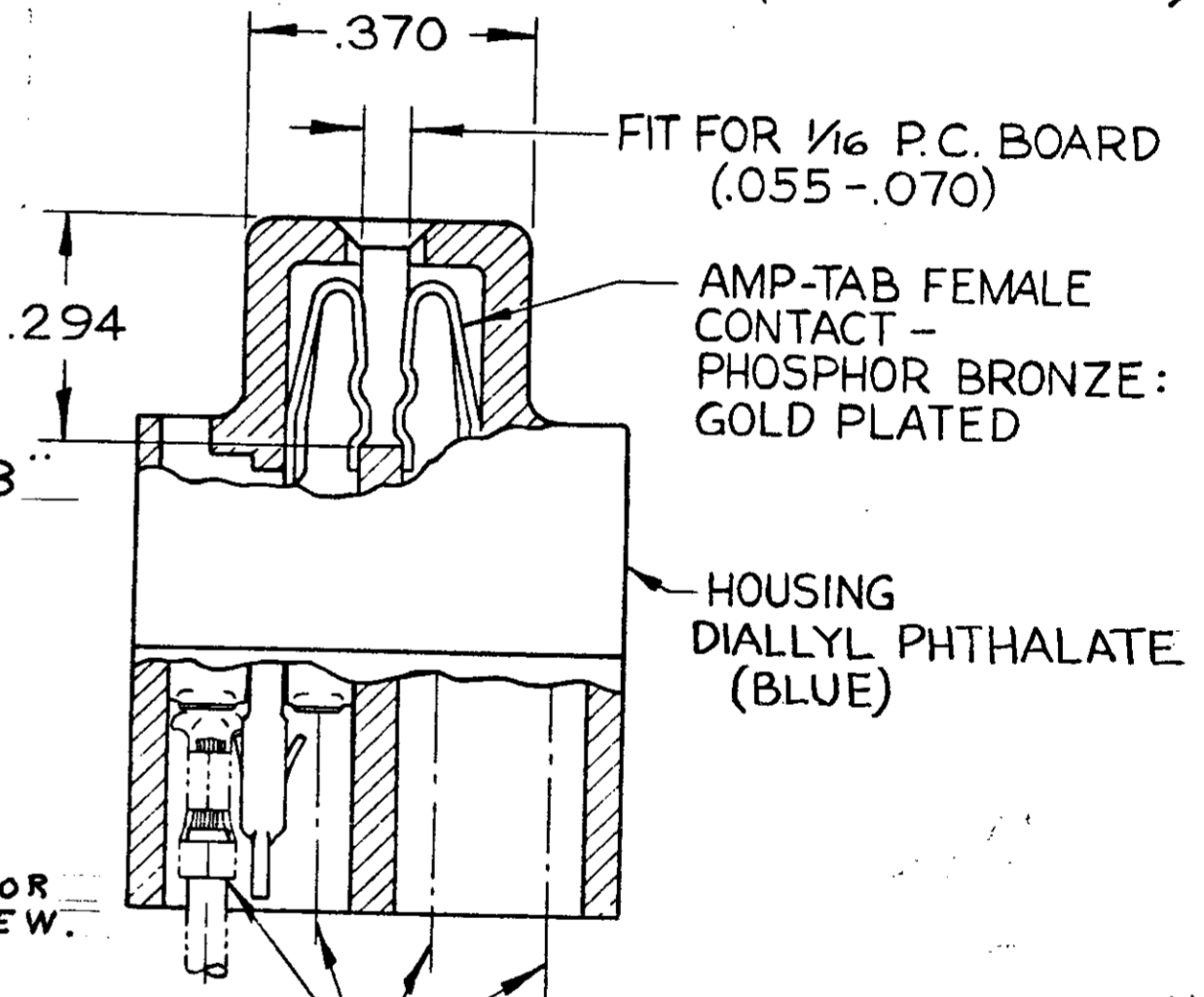


ALTERNATE MOUNTING EAR CONFIGURATION Δ



DETAIL "B"

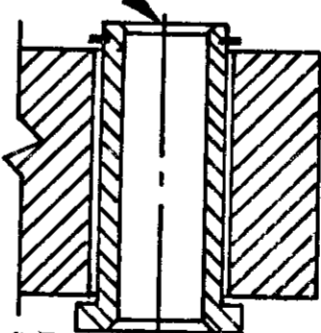
FIT FOR #4-40 SCREW -4 ONLY



SECTION A-A

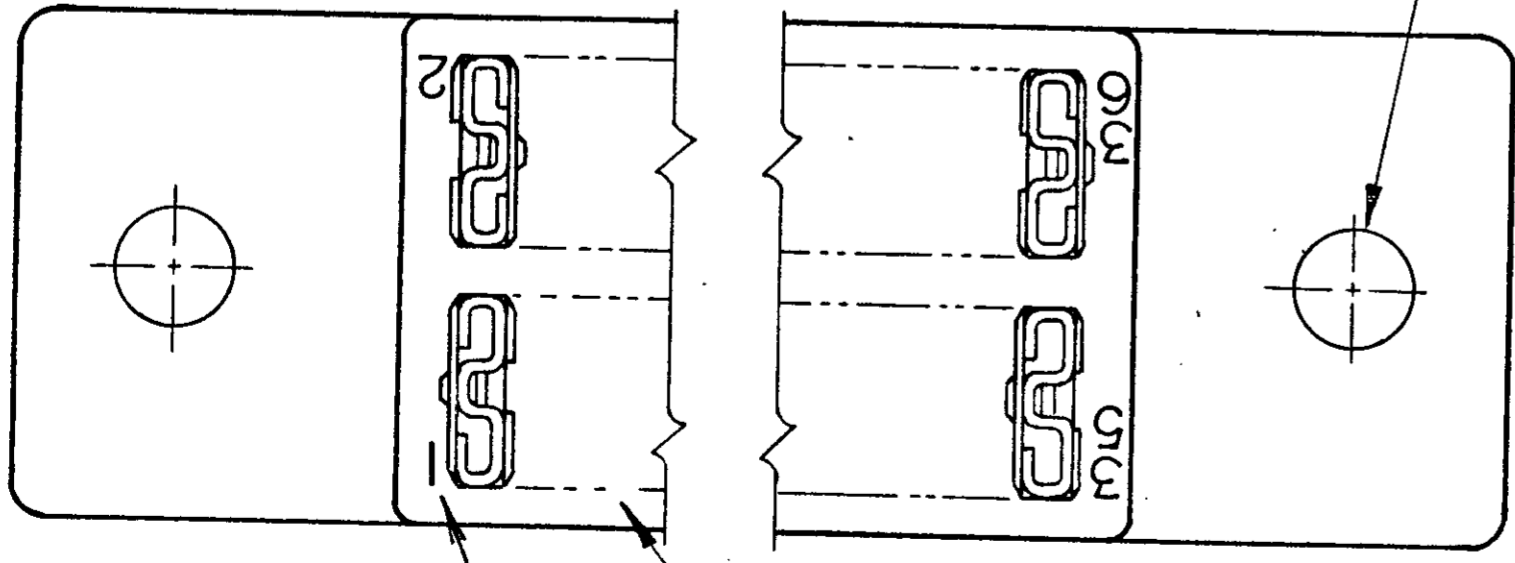
M ±.003 "J" DIA. HOLES

DETAIL "C" -5 ONLY



CLEARANCE FOR #4-40 SCREW.

Δ GROOVES FOR "ON CONTACT KEYING" AMP'S OPTION DEPENDING ON METHOD OF MANUFACTURE. FOR "ON CONTACT" KEYING USE KEYING PLUG P/N 583487-1. (MUST BE ORDERED SEPARATELY.)
 Δ MOUNTING EAR CONFIGURATION AMP'S OPTION DEPENDS ON METHOD OF MANUFACTURE.



CIRCUIT CAVITY IDENTIFICATION MARKING PER MIL-C-21097 MARK FIRST 5 POSITIONS NEXT 5 POSITIONS PLAIN

3. LASER MARKING ACCEPTABLE FOR ALL MARKING

| UNLESS OTHERWISE SPECIFIED DIMENSIONS ARE IN INCHES TOLERANCES ON | | CONTRACT NO. | | AMP INCORPORATED HARRISBURG, PENNSYLVANIA | |
|---|------------|-------------------|----------|--|---------------|
| FRACTIONS | DECIMALS | DR | DATE | AMP TRADEMARK | |
| \pm // | \pm .005 | <i>g. asick</i> | 12-16-66 | 18 POSITION AMP-TAB CONNECTOR .100 CENTERS QUAD. | |
| MATERIAL | ANGLES | CHK | DATE | SIZE | CODE IDENT NO |
| SEE CALLOUT | \pm // | <i>W. Burns</i> | 1-5-67 | C | 00779 |
| HEAT TREAT | | DSGN ENGR | DATE | NUMBER | 582587 |
| SEE CALLOUT | | <i>R. Kaufman</i> | 1-10-67 | REV | T |
| FINISH | | DSGN APPD | DATE | SCALE | 4-1 |
| SEE CALLOUT | | <i>R. Showman</i> | 1/10/67 | WT | CALC |
| | | OTHER APPD | | ACTUAL | SHEET |

NUMBER CUS. 582587

X-ON Electronics

Largest Supplier of Electrical and Electronic Components

Click to view similar products for [Standard Card Edge Connectors](#) category:

Click to view products by [TE Connectivity](#) manufacturer:

Other Similar products are found below :

[6565204-6](#) [PKC-156](#) [1437274-4](#) [147889-1](#) [1489165-4](#) [EBT156-12B1X](#) [EBT15622B2X](#) [EBT156-22R2W](#) [1-582587-1](#) [1-582589-1](#) [2-6437275-9](#) [284-0102-12100](#) [306022901000000](#) [307-012-502-202](#) [307-024-526-201](#) [307-056-520-300](#) [307-080-526-208](#) [1926088-2](#) [245-062-520-350](#) [287-0032-12101](#) [306-010-500-112](#) [306-028-525-102](#) [306-240-318](#) [307-036-502-202](#) [307-036-521-301](#) [307-072-526-202](#) [345-060-559-303](#) [368-004-520-201](#) [392-008-559-201](#) [534671-1](#) [5-530501-5](#) [341-240-317](#) [345-029-520-300](#) [345-030-500-301](#) [345-044-500-300](#) [345-220-058](#) [346-240-318](#) [357-030-526-201](#) [387-012-523-300](#) [395-044-520-300](#) [395-100-524-300](#) [50-12B-10](#) [50-6SN-5](#) [09-07-2032](#) [10035388-106LF](#) [10035388-802LF](#) [10115859-011LF](#) [10122859-009LF](#) [101269333204245CLF](#) [10127905-B04B24BLF](#)